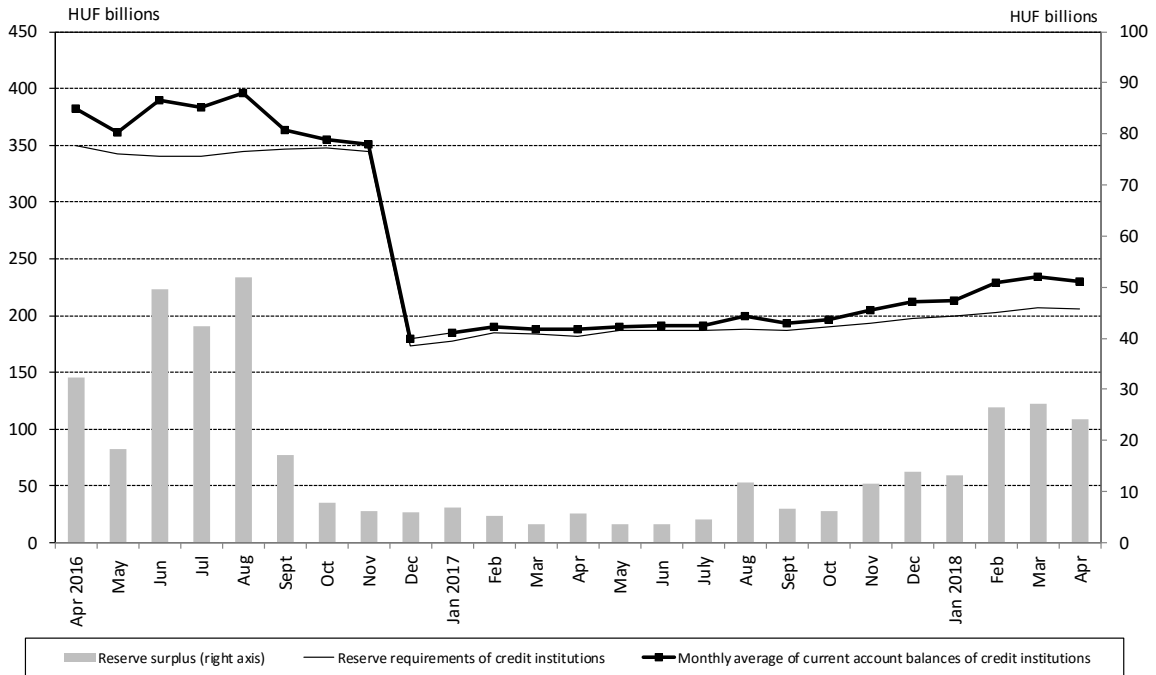
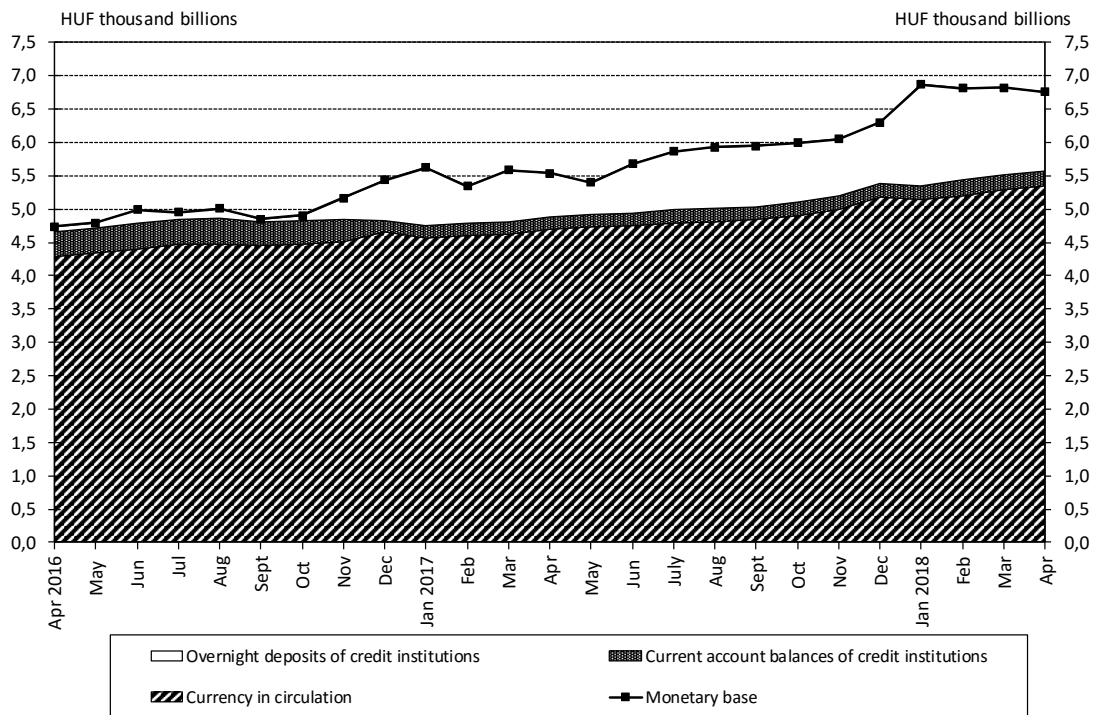


## Chart-pack to the Press Release on the preliminary statistical balance sheet of the MNB, April 2018

### Chart 1 Reserve requirements of credit institutions<sup>1</sup>

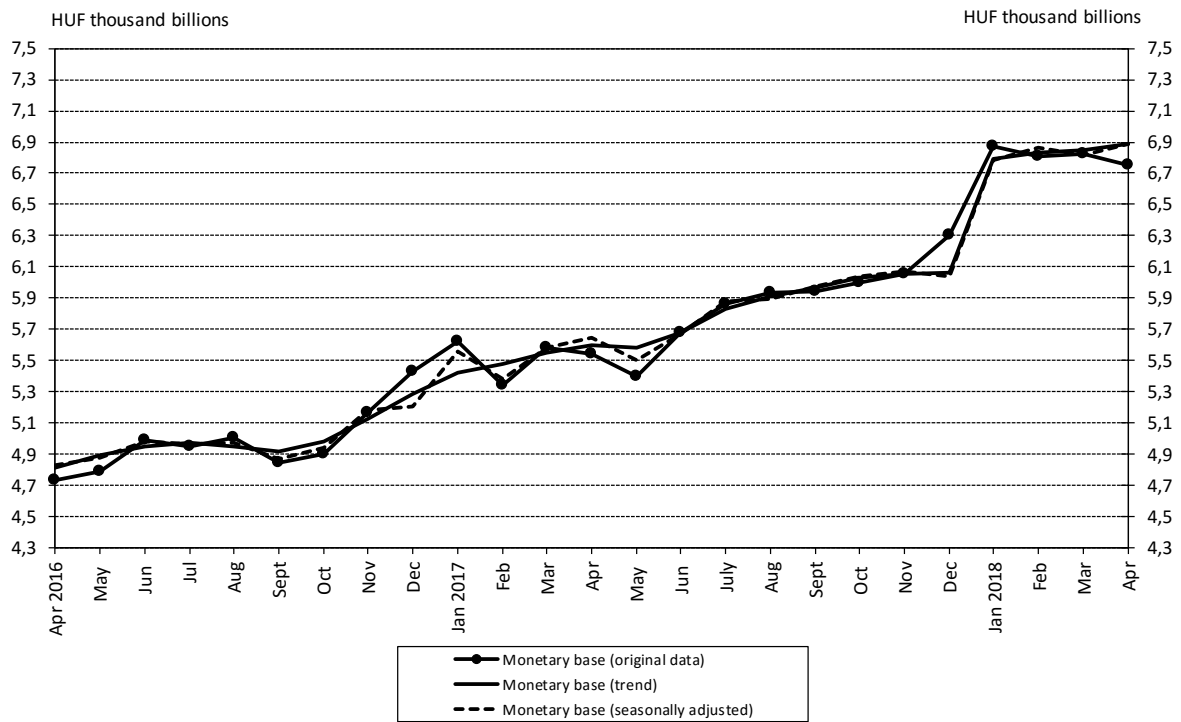


### Chart 2 Components of the monetary base

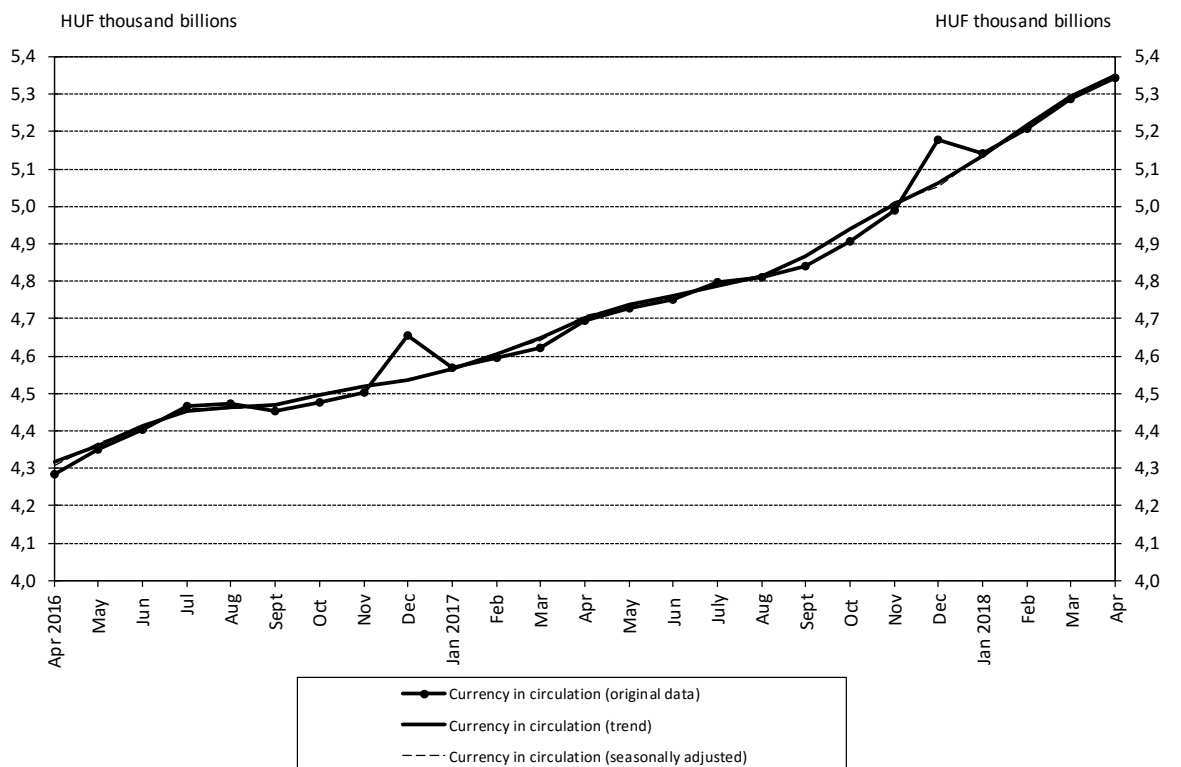


<sup>1</sup> From December 1 2015, requires credit institutions to hold reserves at a fixed, uniform ratio of 2 per cent, and from 1 December 2016 a fixed 1 per cent is the required reserve ratio.

**Chart 3 Changes in the monetary base<sup>2</sup>**

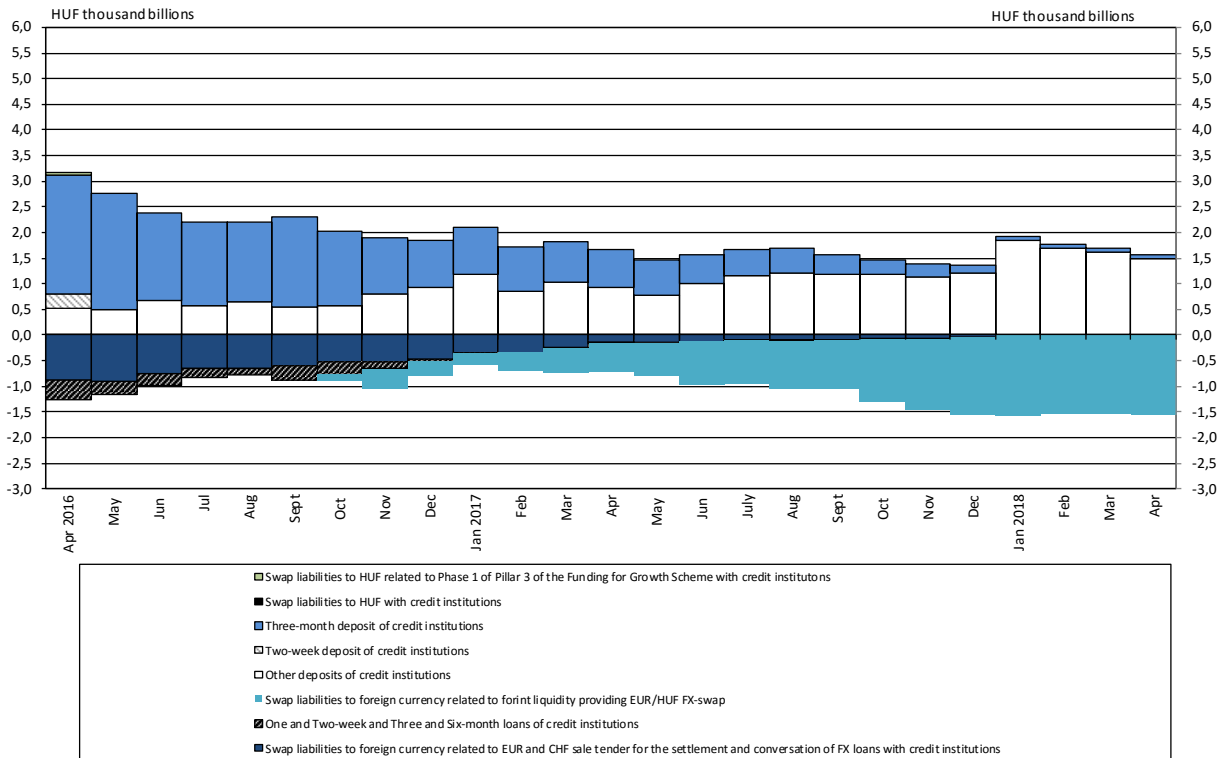


**Chart 4 Monthly average stocks of currency in circulation**

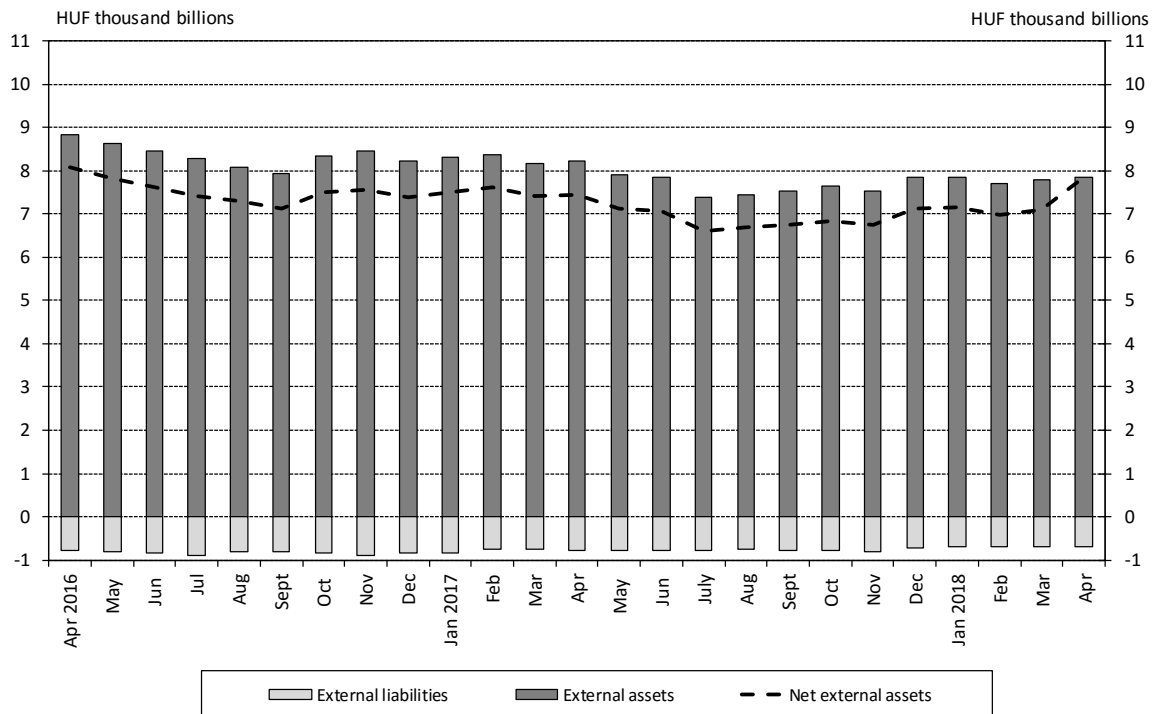


<sup>2</sup> See the Methodological notes.

**Chart 5 Recourse to selected central bank instruments – monthly average stocks**



**Chart 6 External assets and external liabilities of the MNB at the end of the month**



**Chart 7 Central bank interest rates and average interbank overnight lending rates**

