

Charts to the Press Release on the aggregated balance sheet of credit institutions, January 2011

Chart 1 Real growth of households' outstanding borrowing^{1 2}

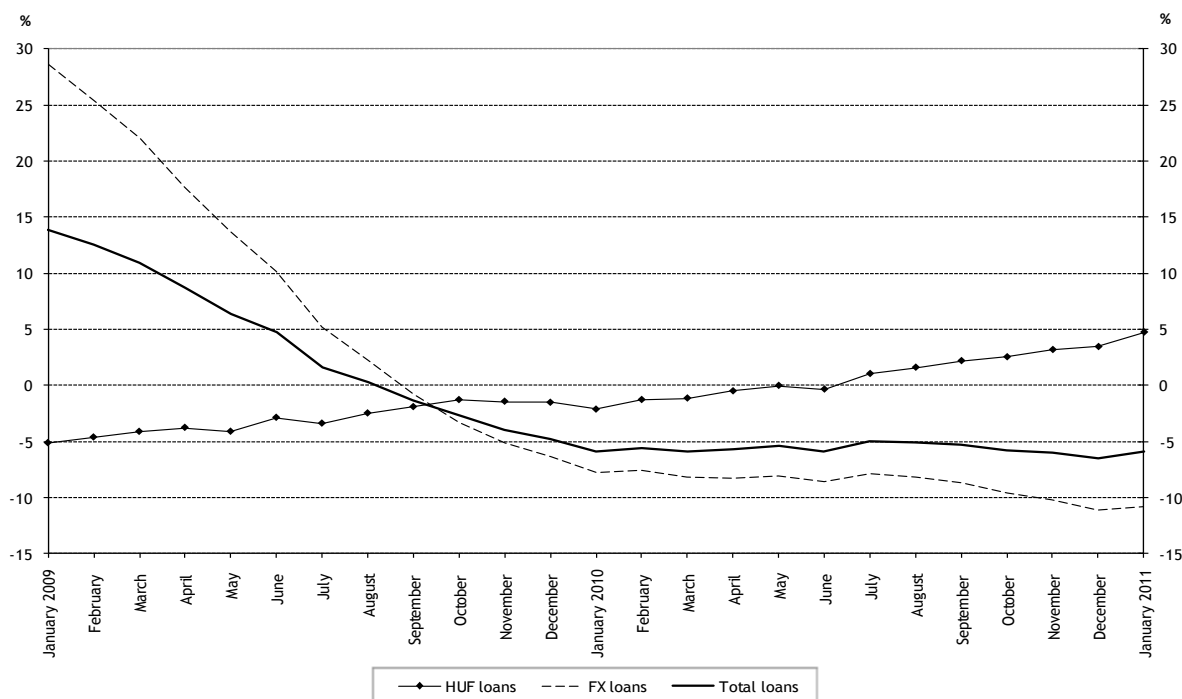
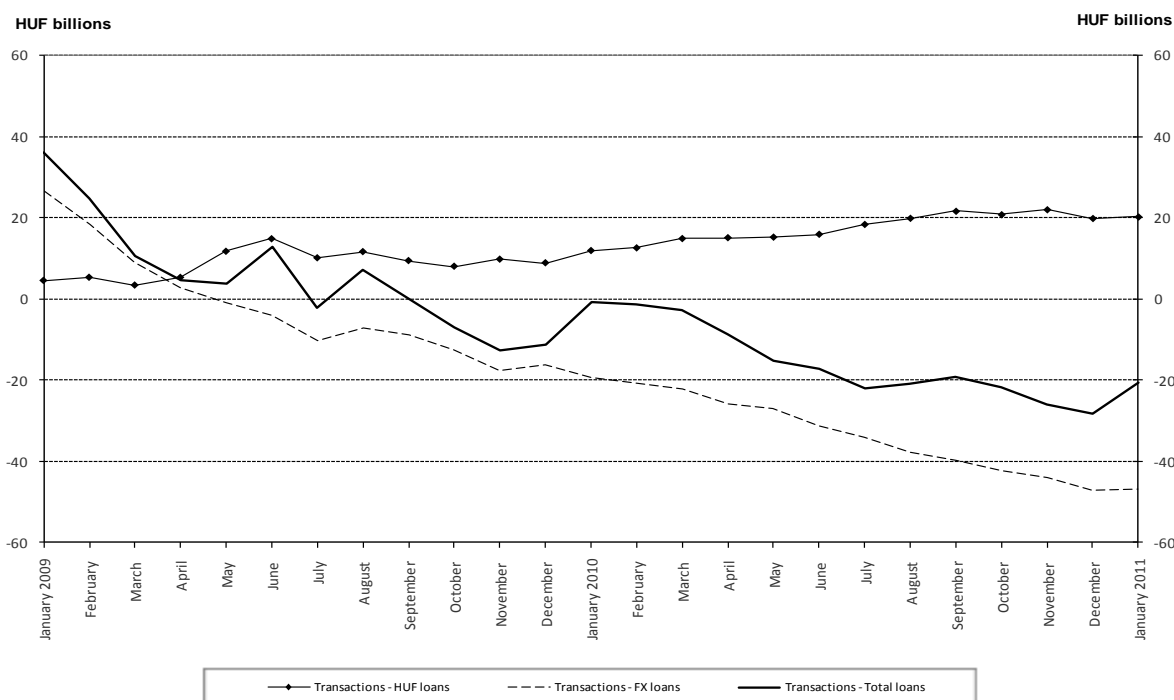


Chart 2 Seasonally and exchange rate adjusted net new borrowing by households



¹ Transactions-based growth rate (see the Methodological notes).

² For an interpretation of the trend plotted on the chart, see the Methodological notes.

Chart 3 Outstanding forint, euro and Swiss franc-denominated housing loans of households
Foreign currency data are calculated at the MNB's current³ mid-rates

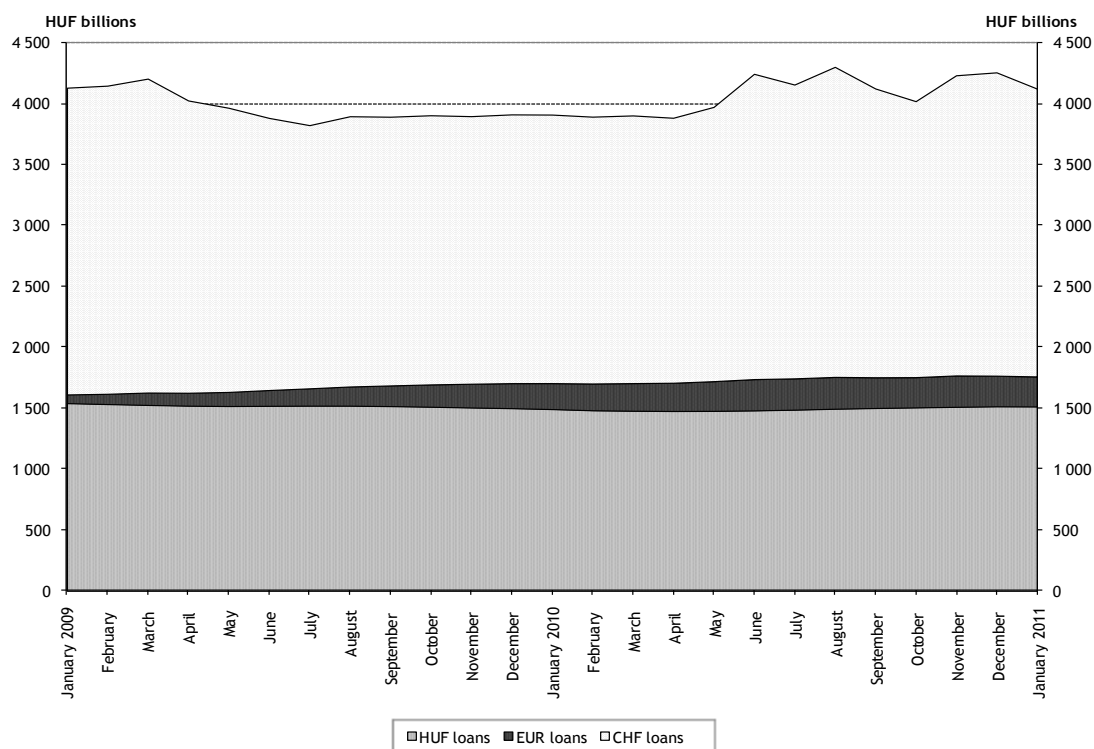
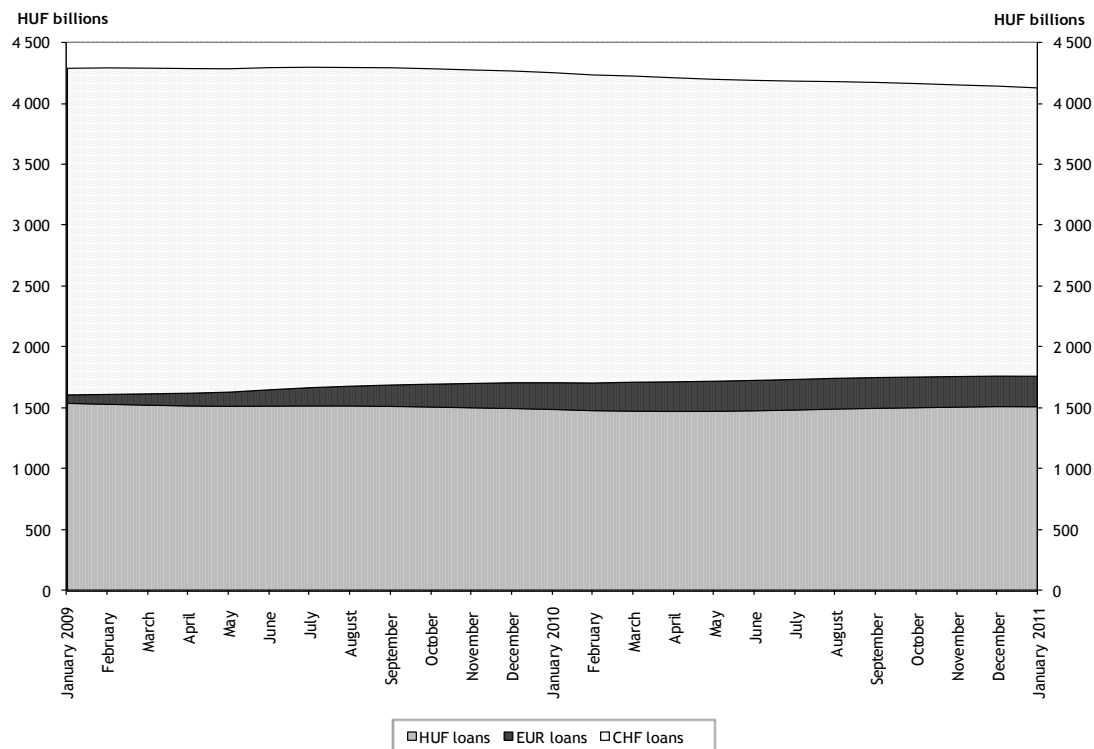


Chart 4 Outstanding forint, euro and Swiss franc-denominated housing loans of households
Calculated at the MNB's mid-rates for 31 January 2011



³ The end-of-month mid-rate of the forint changing from month to month.

Chart 5 Outstanding forint, euro and Swiss franc-denominated consumer loans of households
Foreign currency data are calculated at the MNB's current⁴ mid-rates

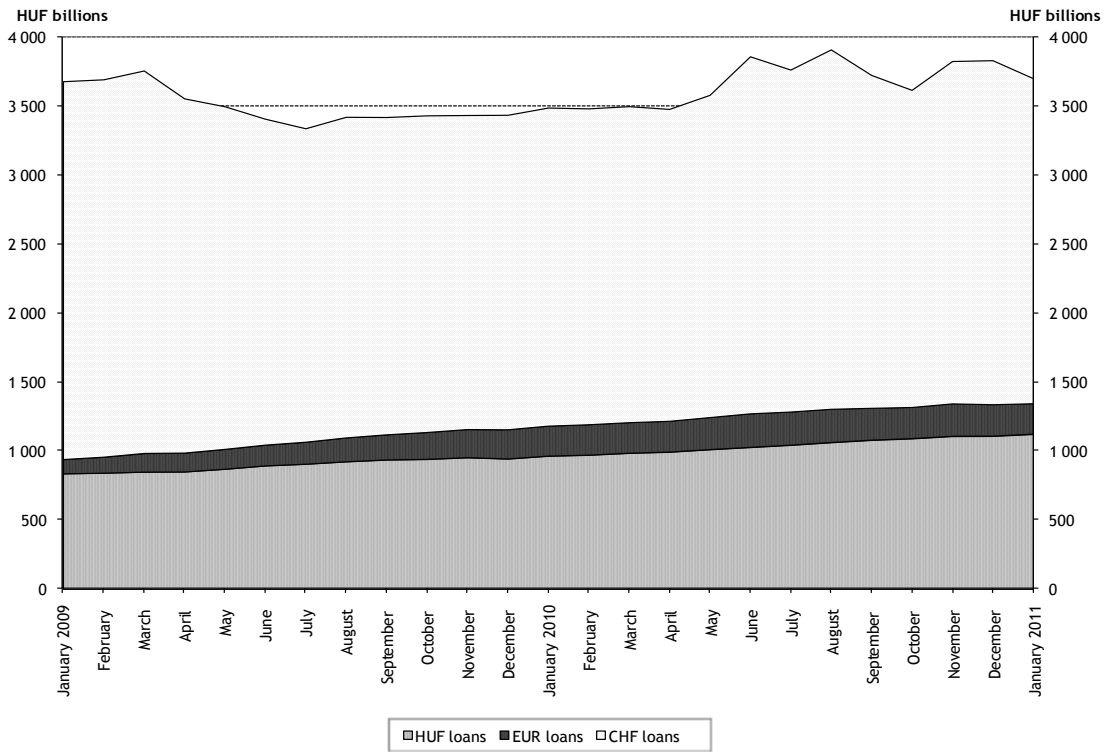
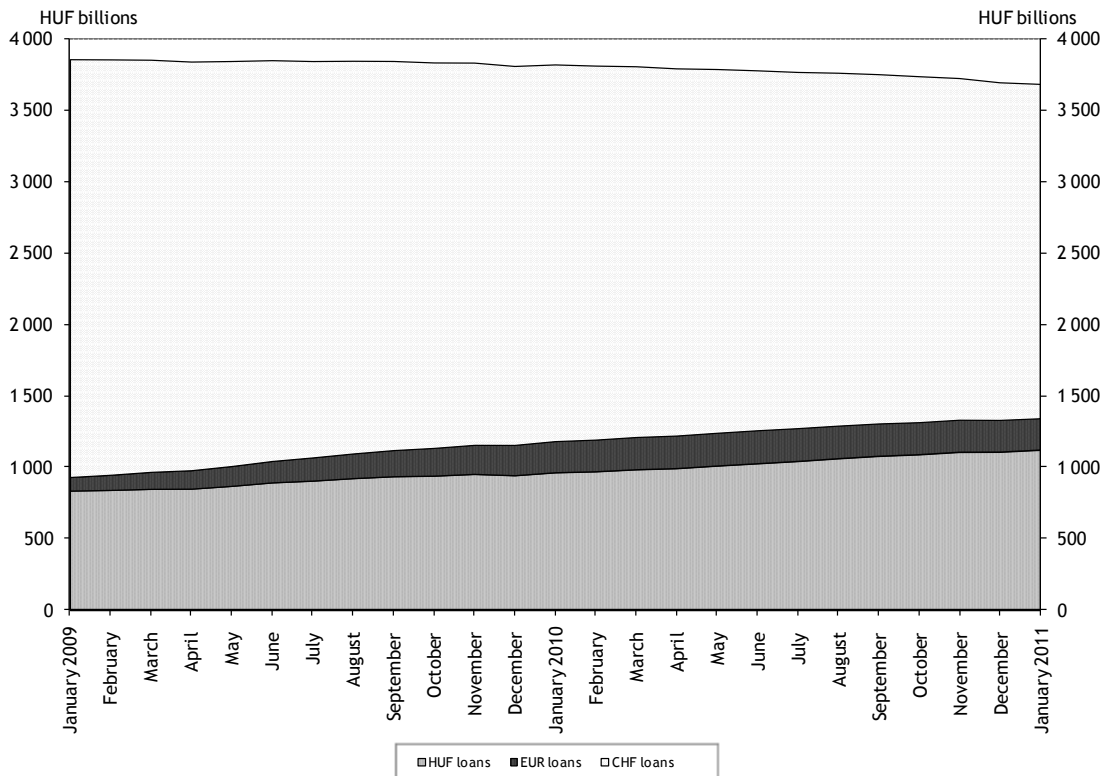


Chart 6 Outstanding forint, euro and Swiss franc-denominated consumer loans of households
Calculated at the MNB's mid-rates for 31 January 2011



⁴ The end-of-month mid-rate of the forint changing from month to month.

Chart 7 Outstanding forint, euro and Swiss franc-denominated other loans of households
Foreign currency data are calculated at the MNB's current⁵ mid-rates

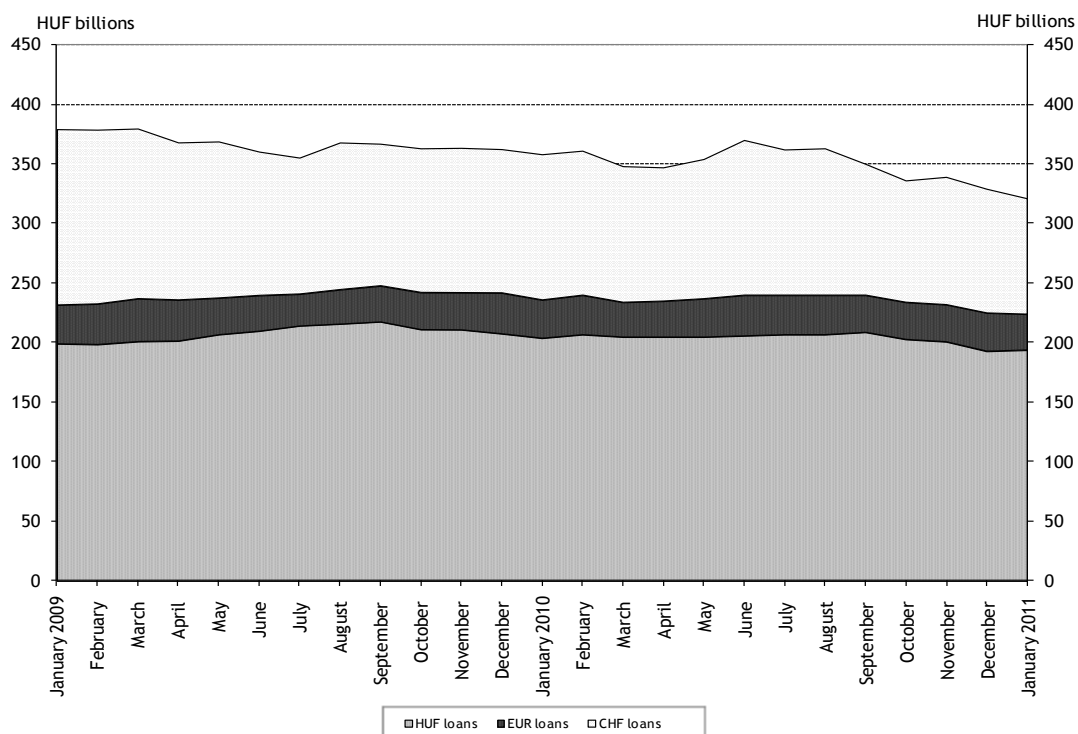
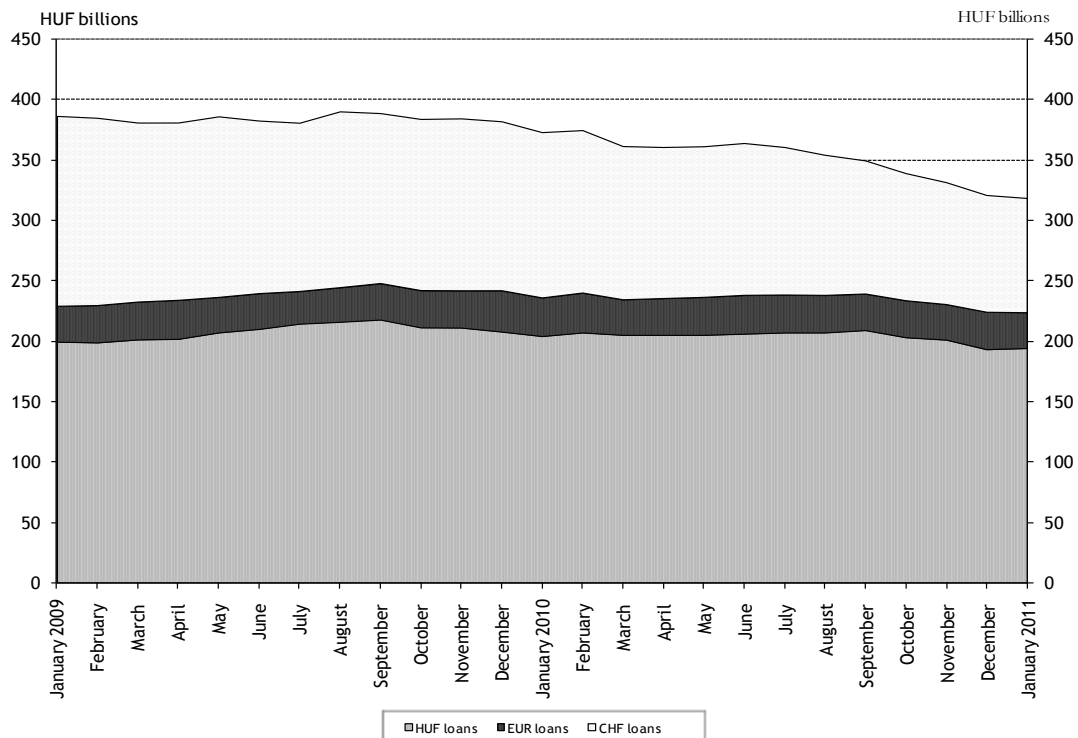


Chart 8 Outstanding forint, euro and Swiss franc-denominated other loans of households
Calculated at the MNB's mid-rates for 31 January 2011



⁵ The end-of-month mid-rate of the forint changing from month to month.

Chart 9 Percentage shares of foreign currency loans within the individual categories of household loans

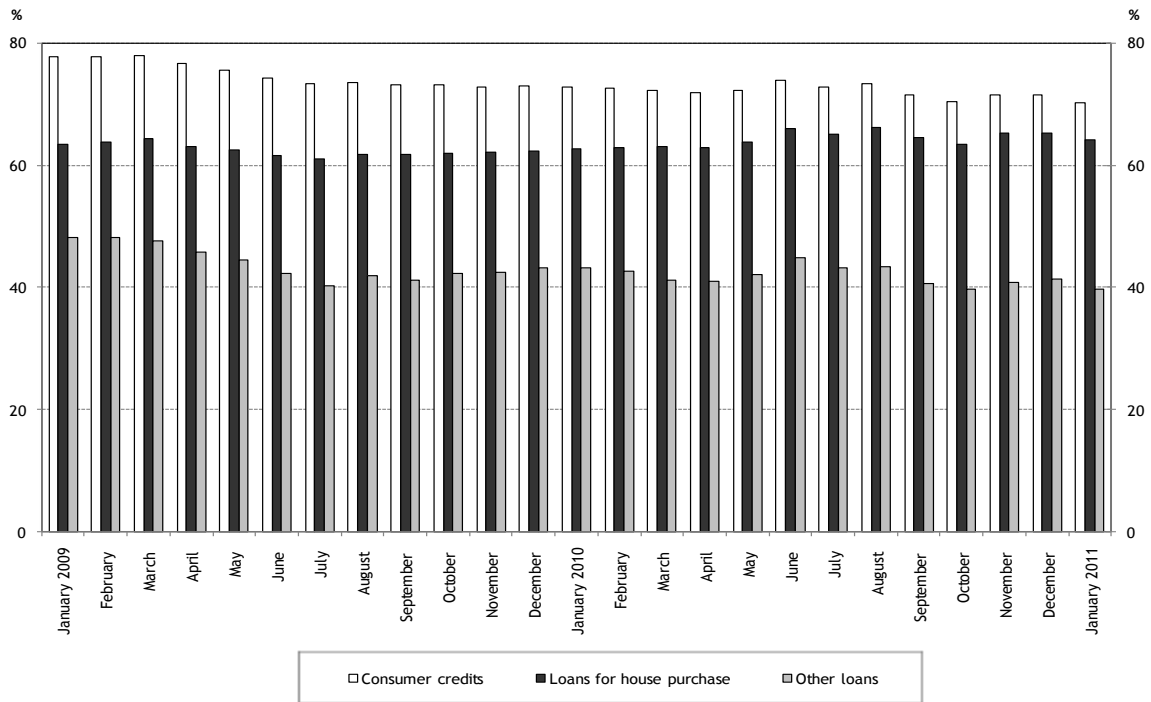
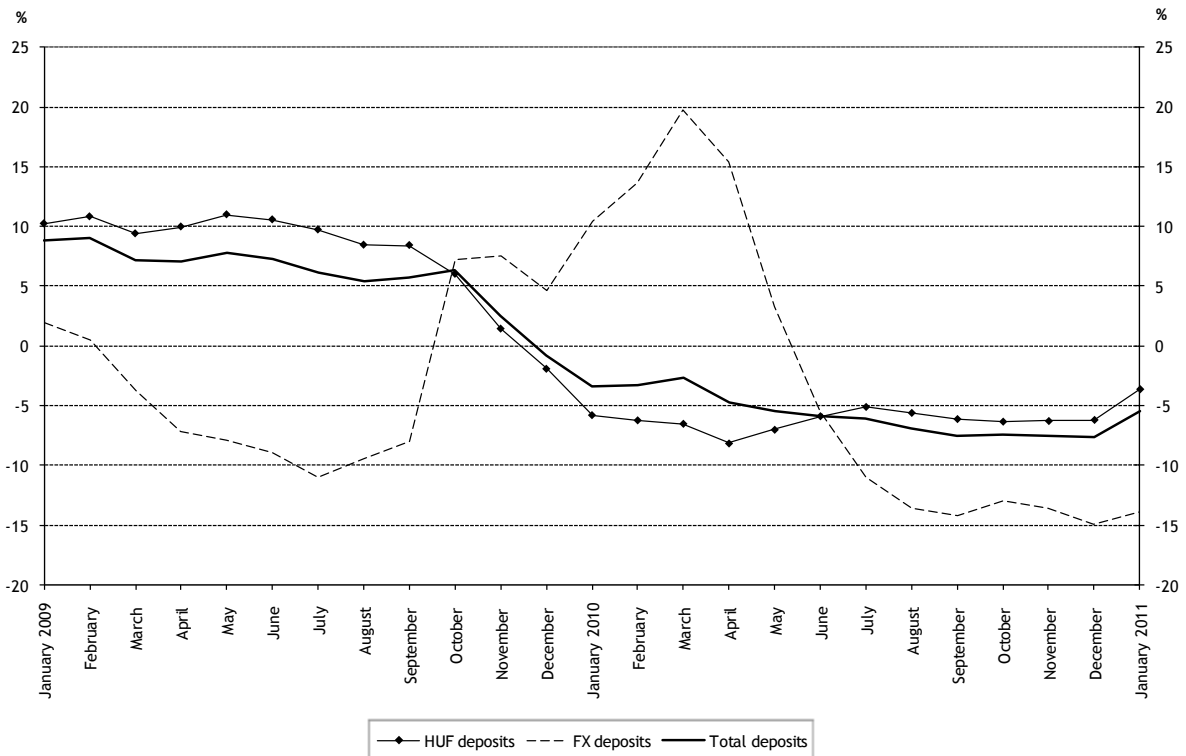


Chart 10 Real growth of household deposits⁶



⁶ Transactions-based growth rate (see the Methodological notes).

Chart 11 Seasonally and exchange rate adjusted net new deposits of households

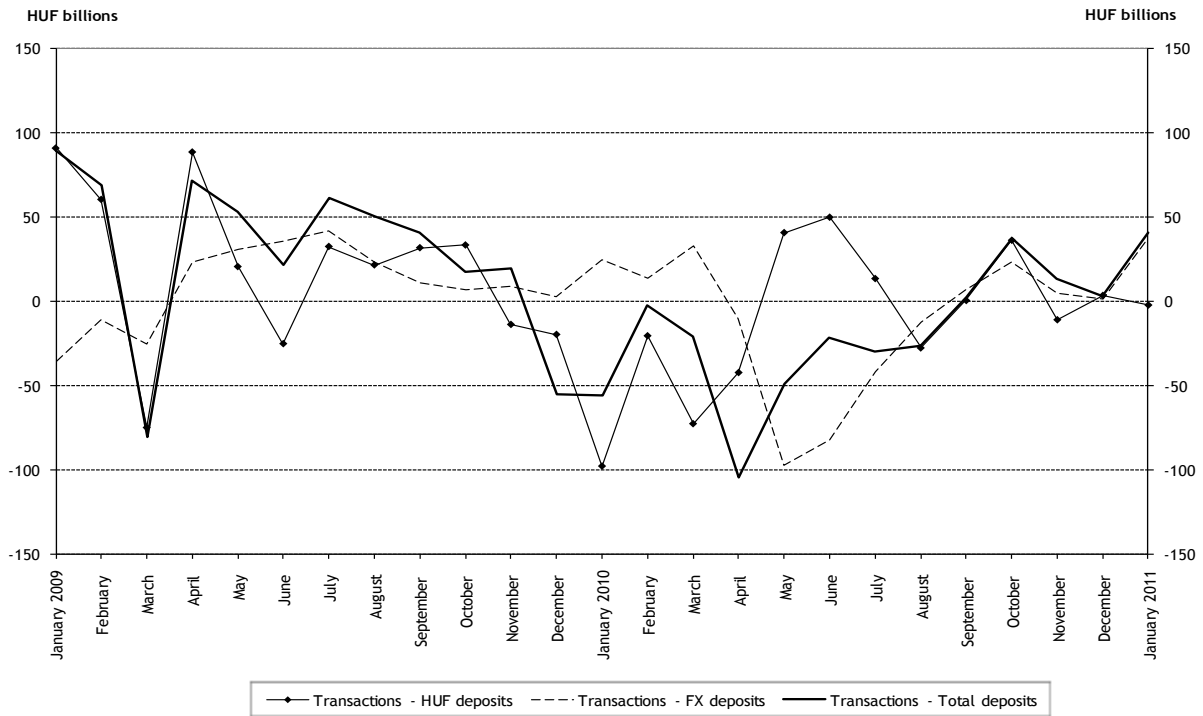
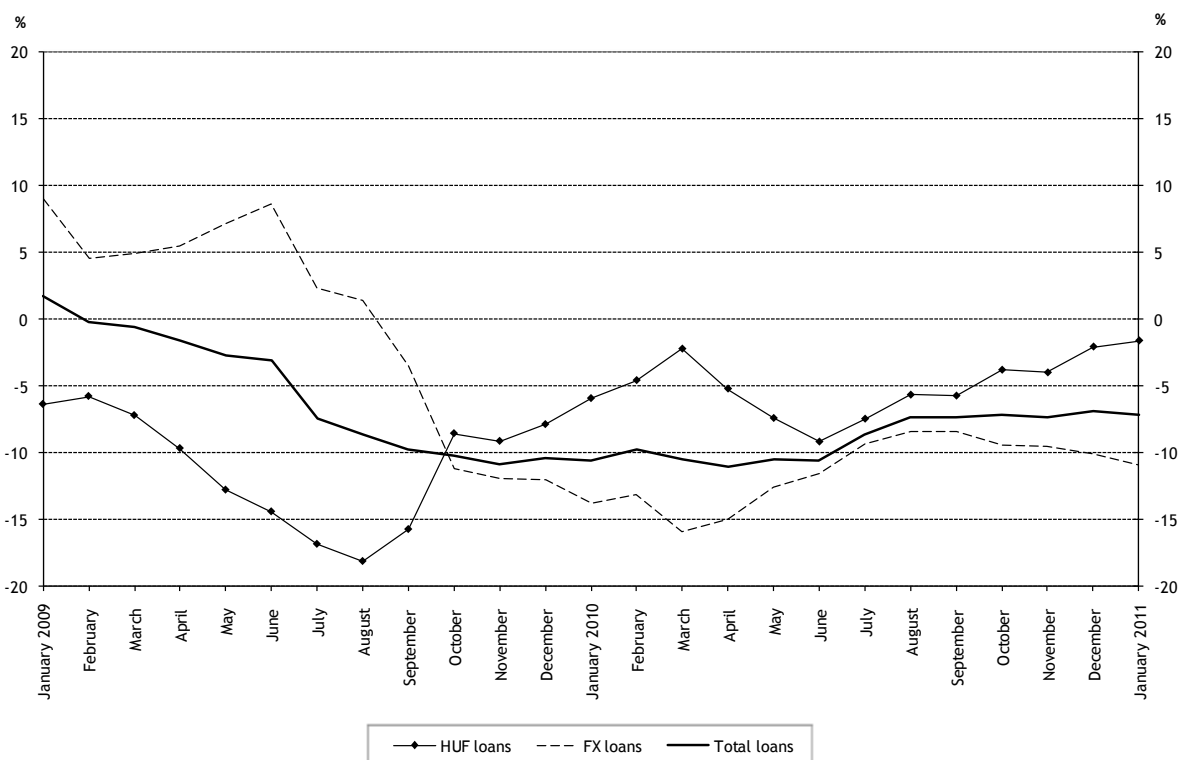


Chart 12 Real growth of non-financial corporations' outstanding borrowing⁷



⁷ Transactions-based growth rate (see the Methodological notes).

Chart 13 Seasonally and exchange rate adjusted net new borrowing by non-financial corporations⁸

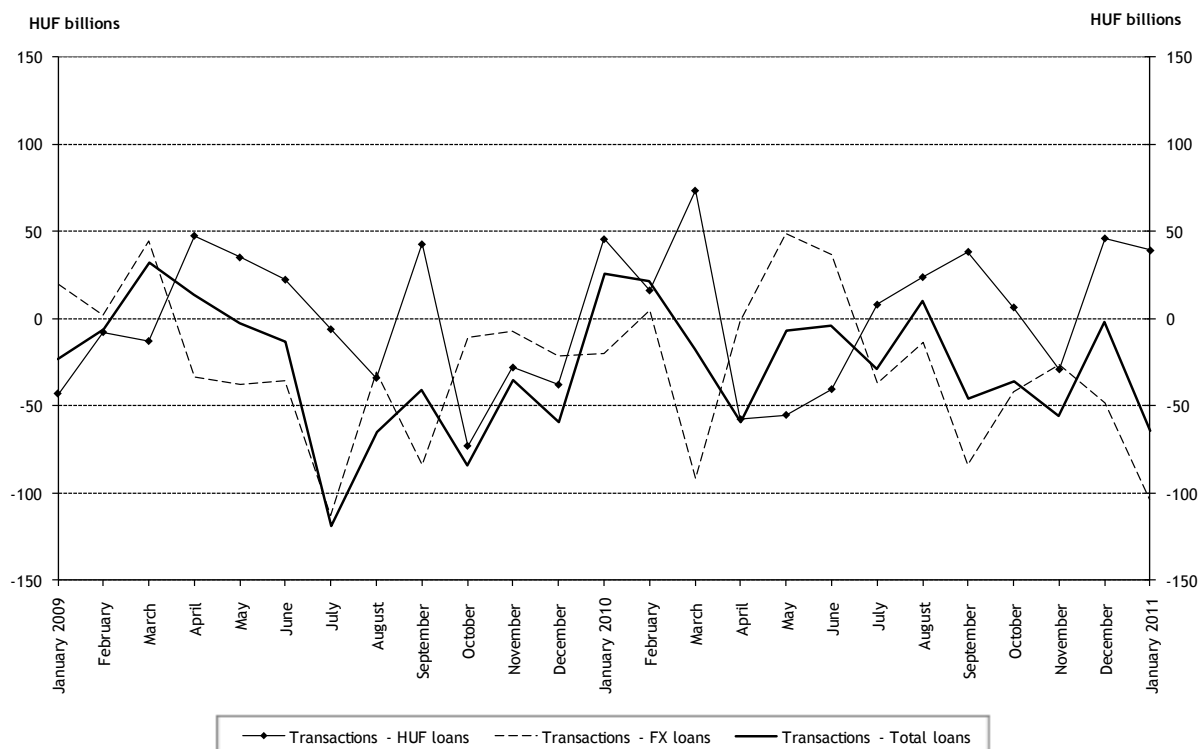
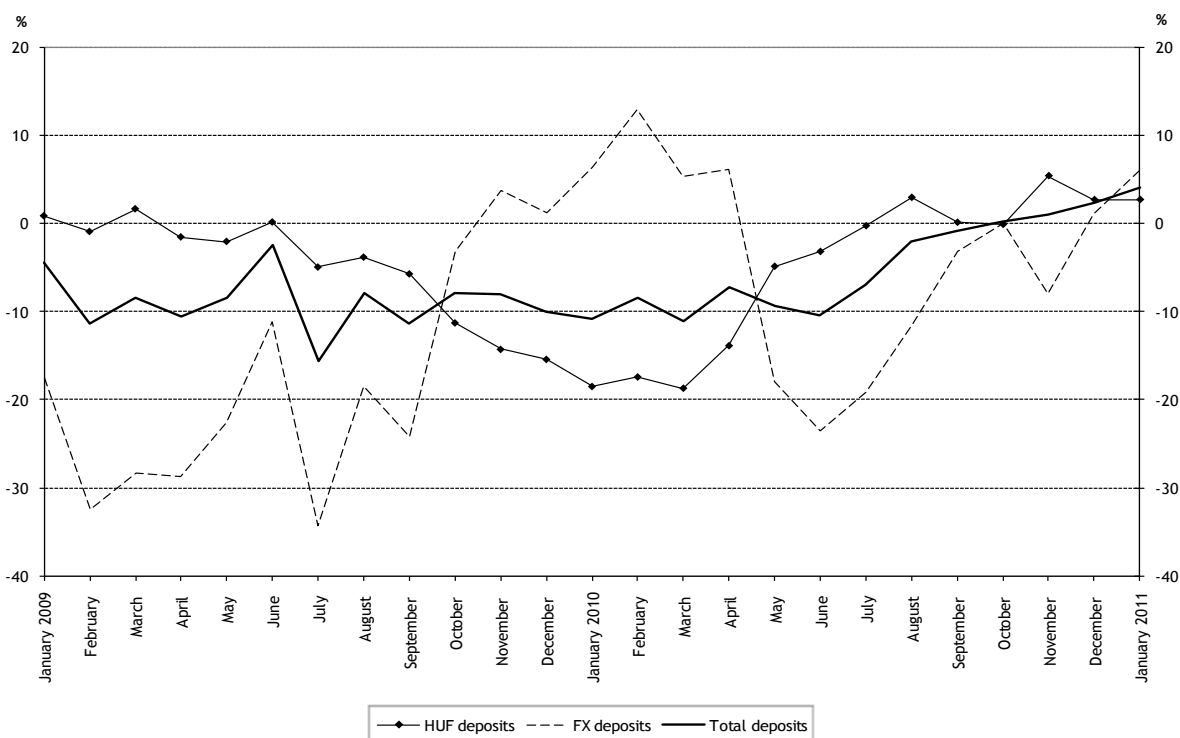


Chart 14 Real growth of non-financial corporations' deposits⁹



⁸ The time series for non-financial corporations' foreign currency loans contain not seasonally adjusted data, as seasonal adjustment did not produce a meaningful result, due to the considerable change in the behaviour of the series.

⁹ Transactions-based growth rate (see the Methodological notes).

Chart 15 Seasonally and exchange rate adjusted net new deposits of non-financial corporations

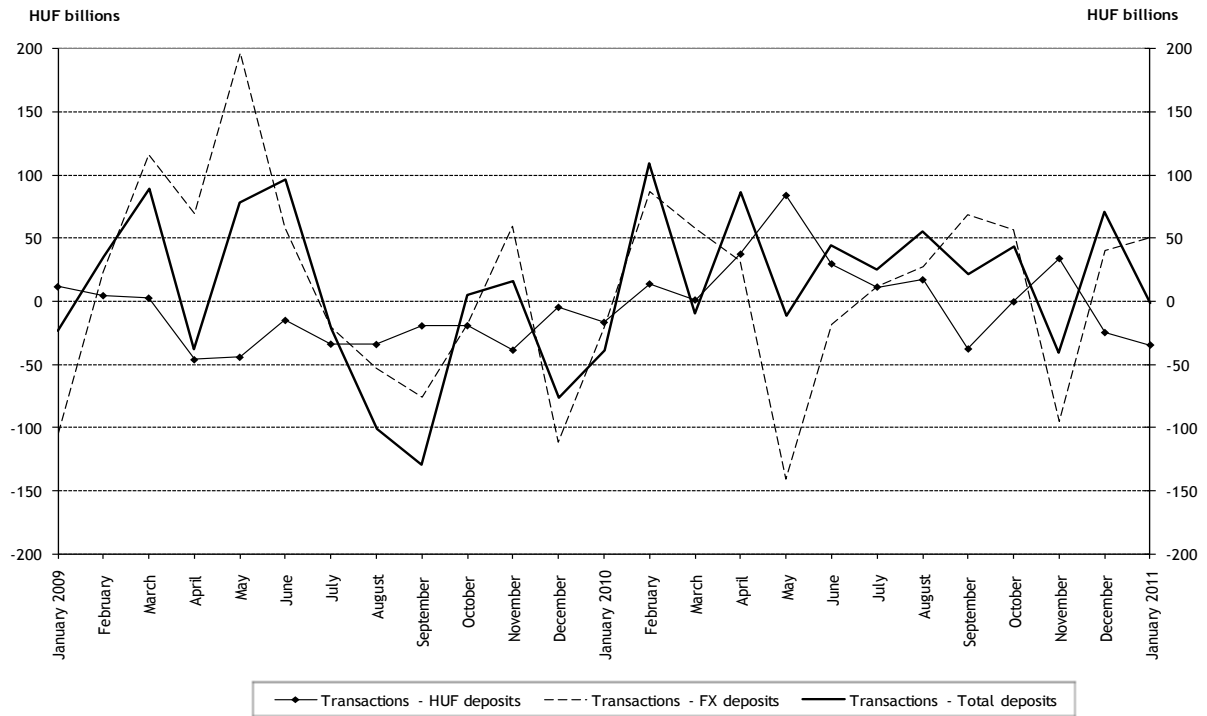
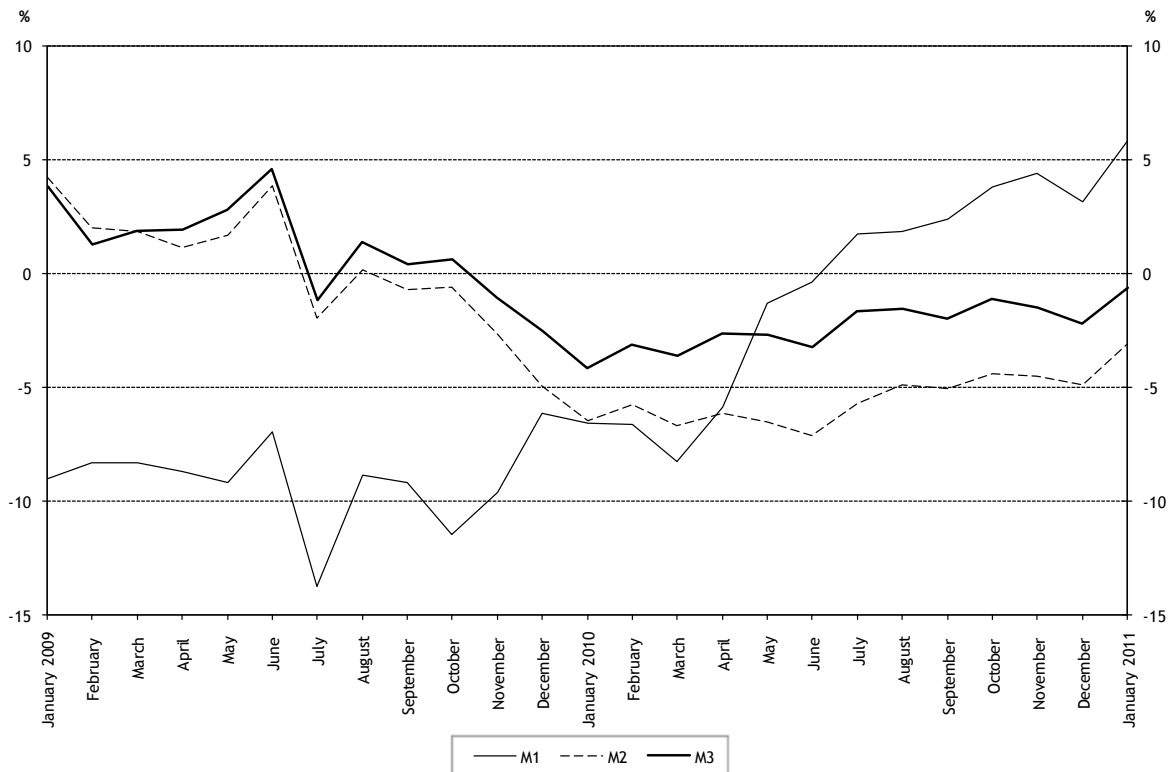


Chart 16 Real growth of the monetary aggregates¹⁰



¹⁰ For an interpretation of the trend plotted on the chart, see the Methodological notes.

Chart 17 Seasonally adjusted M1

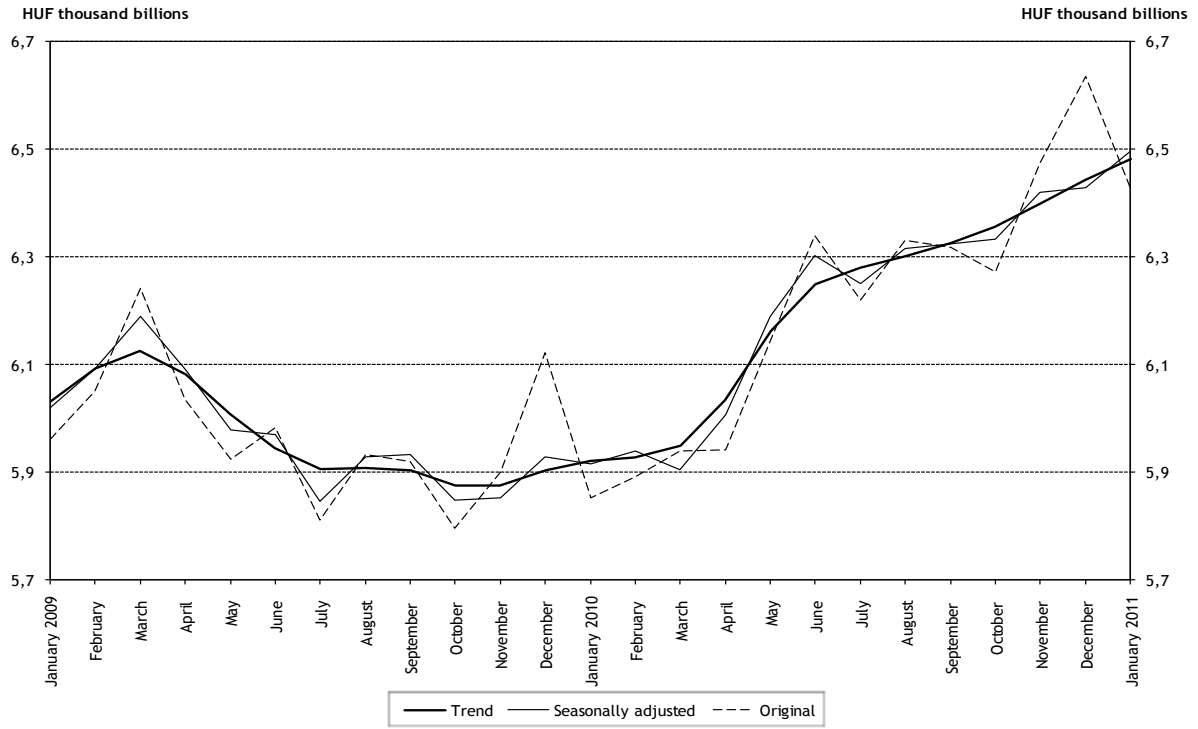


Chart 18 Seasonally adjusted M2

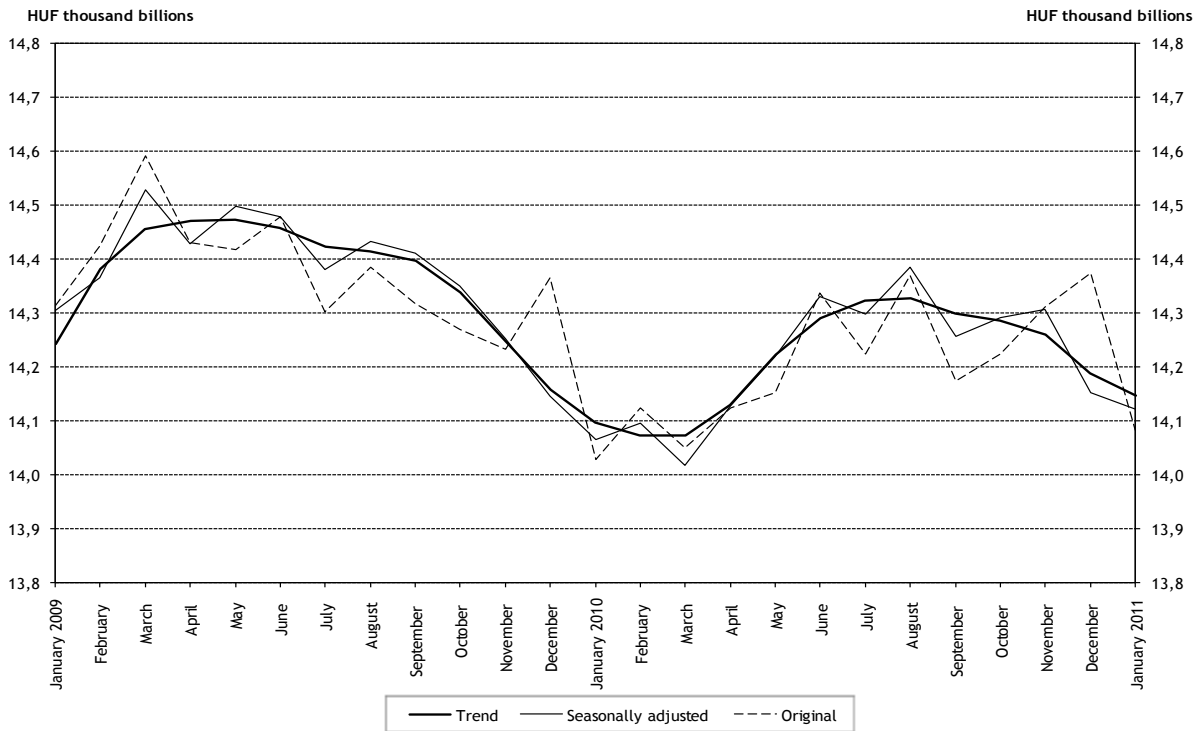


Chart 19 Seasonally adjusted M3

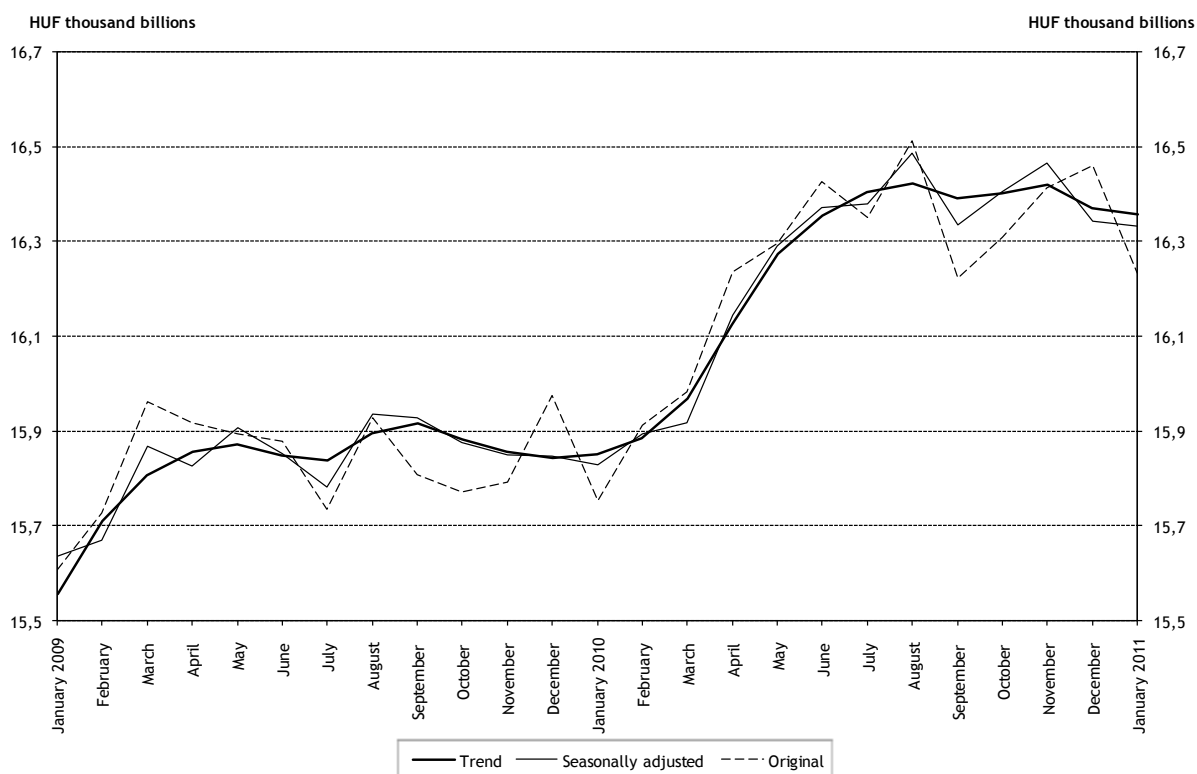


Chart 20 Total foreign exposure of credit institutions

