

Charts to the press release on the aggregated balance sheet of credit institutions
August 2008

Chart 1 Net borrowing by non-financial corporations – seasonally adjusted data

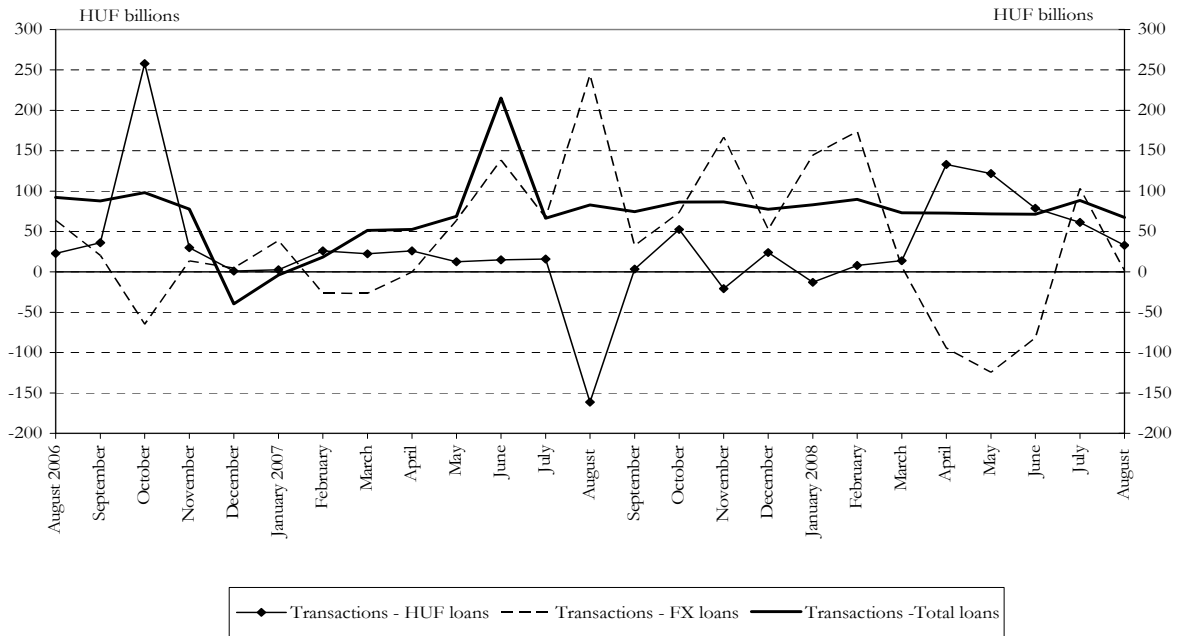
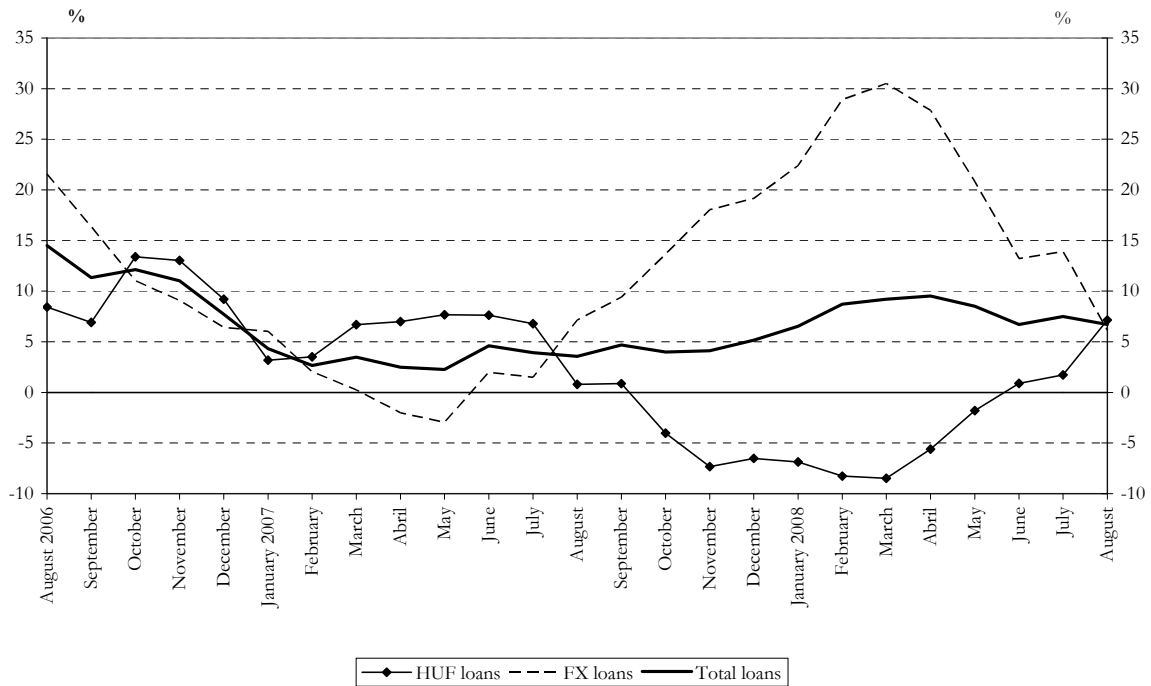


Chart 2 Real growth of non-financial corporations' outstanding borrowing¹



¹ Transactions-based growth rate (see the Methodological notes).

Chart 3 Net borrowing by households – seasonally adjusted data

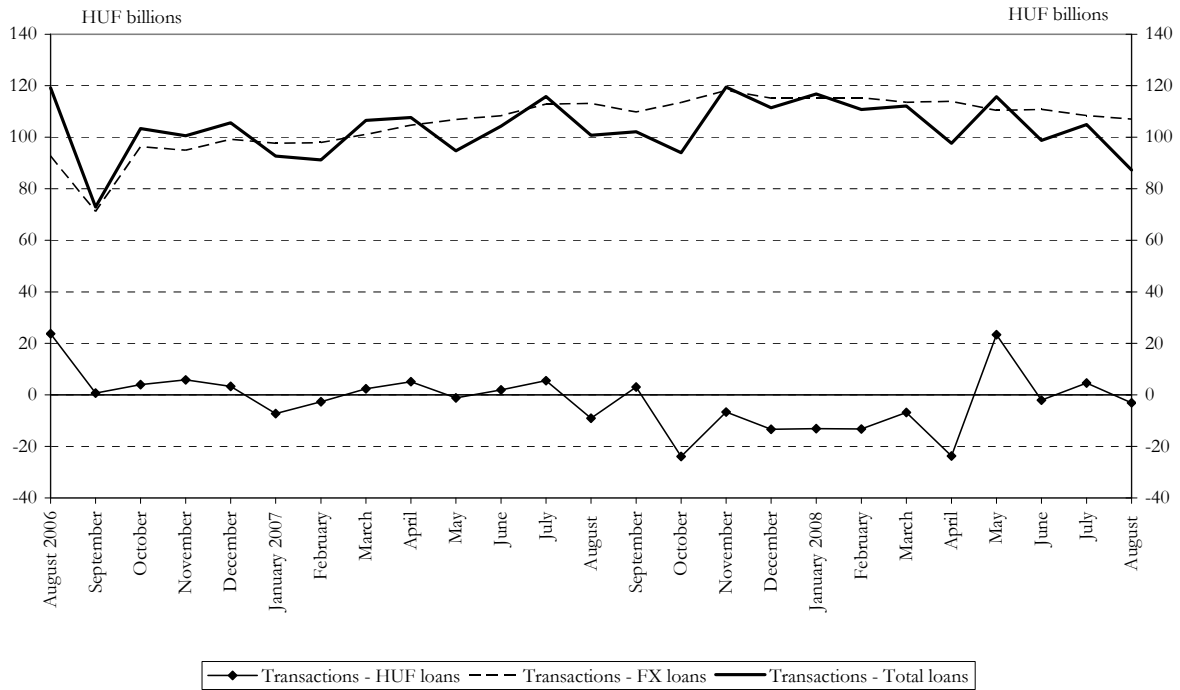
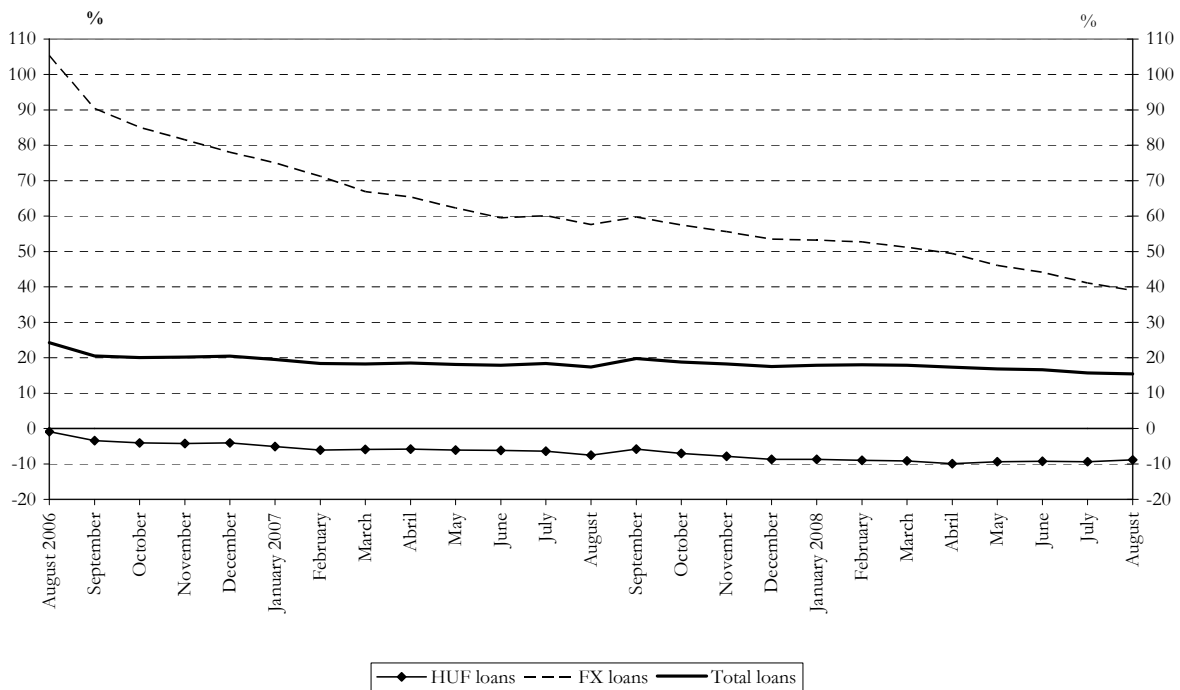


Chart 4 Real growth of households' outstanding borrowing^{2 3}



² Transactions-based growth rate (see the Methodological notes).

³ For an interpretation of the trend plotted on the chart, see the Methodological notes.

Chart 5 Percentage shares of households' foreign currency loans within the individual categories of loans

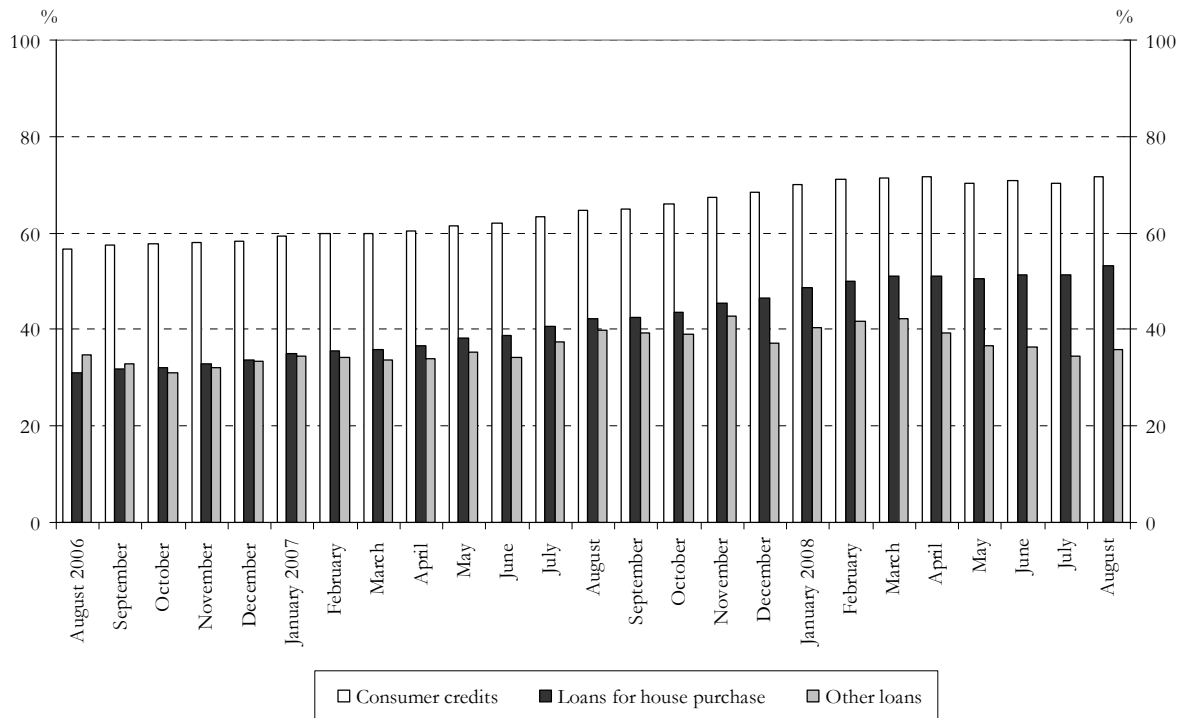
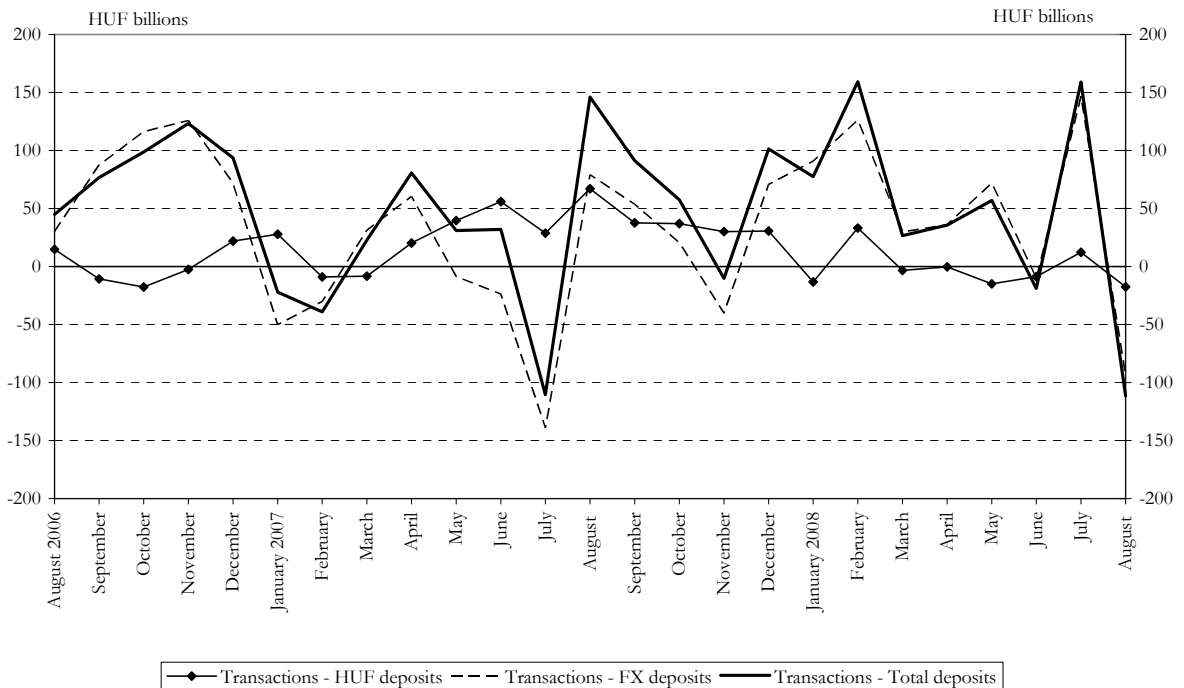


Chart 6 Net deposits of non-financial corporations – seasonally adjusted data⁴



⁴ Indirect adjustment in the case of total deposits.

Chart 7 Real growth of non-financial corporations' deposits⁵

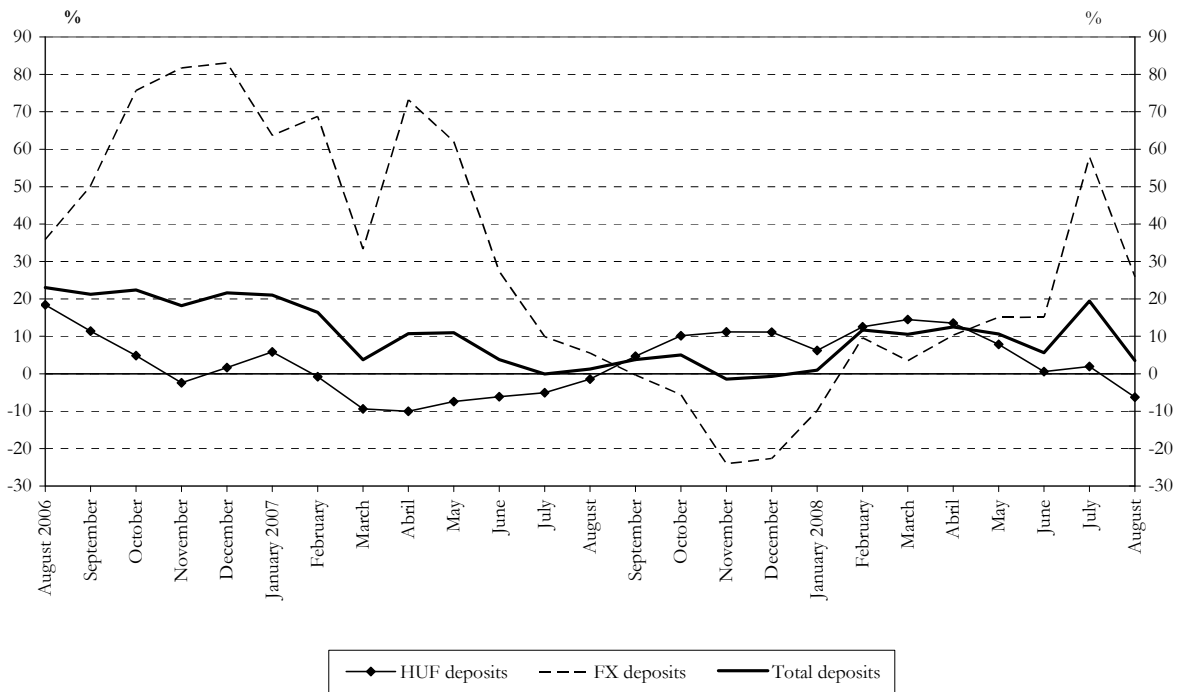
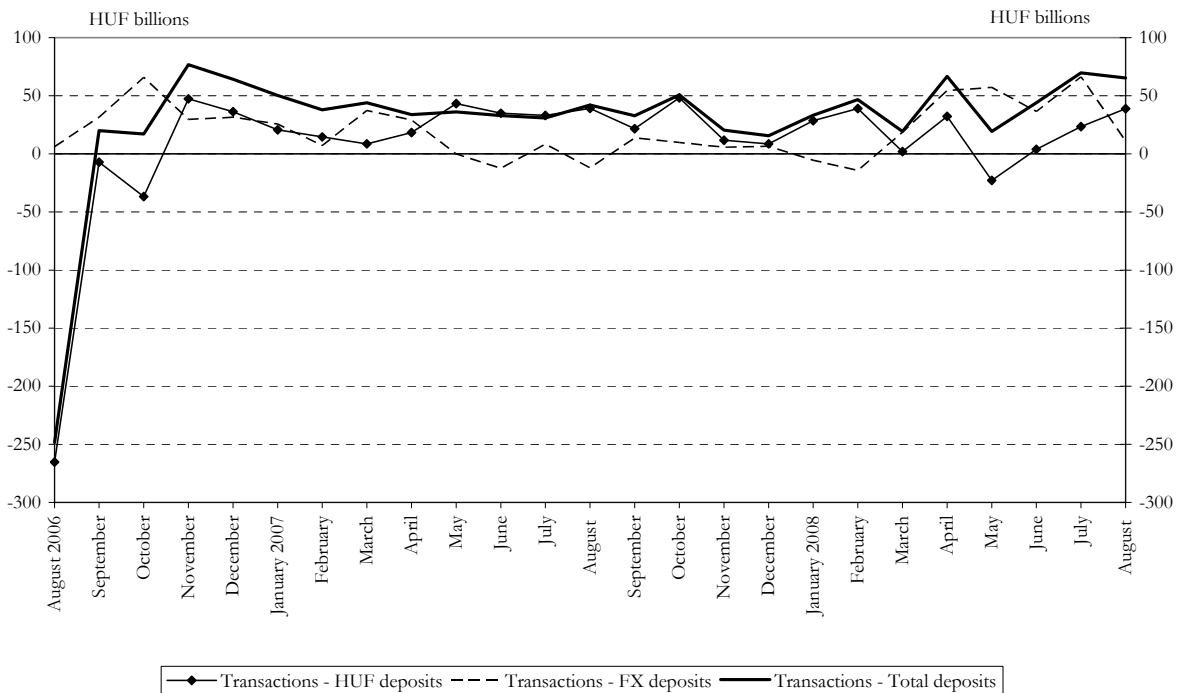


Chart 8 Net deposits of households – seasonally adjusted data



⁵ Transactions-based growth rate (see the Methodological notes).

Chart 9 Real growth of household deposits⁶

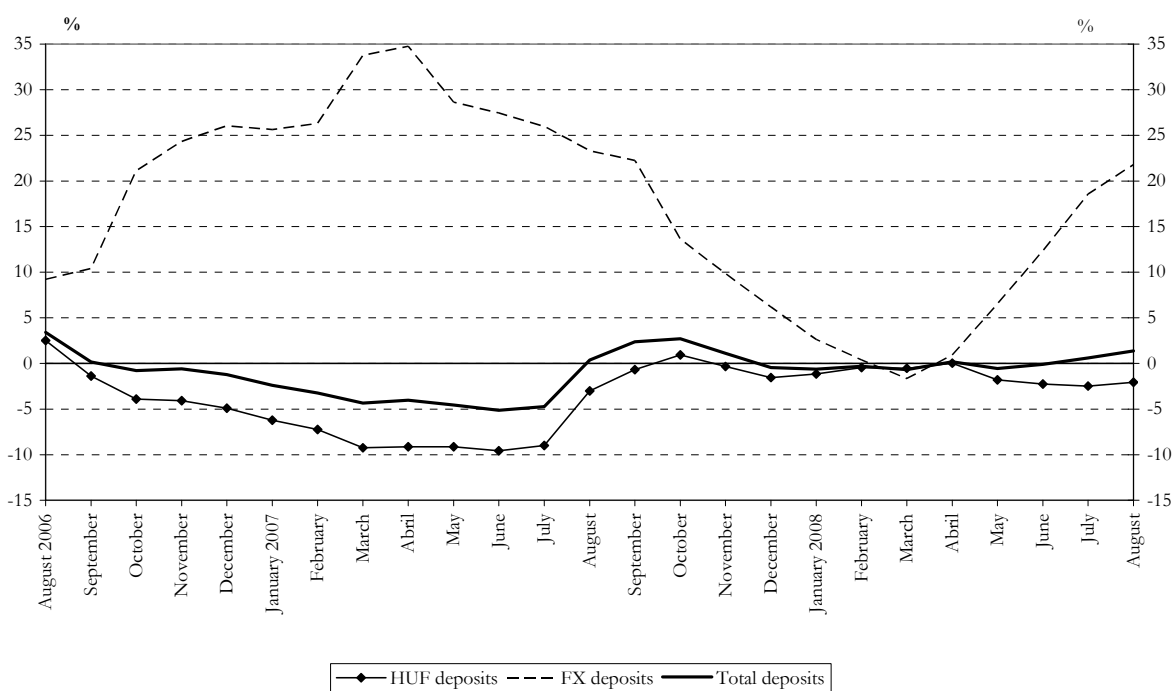
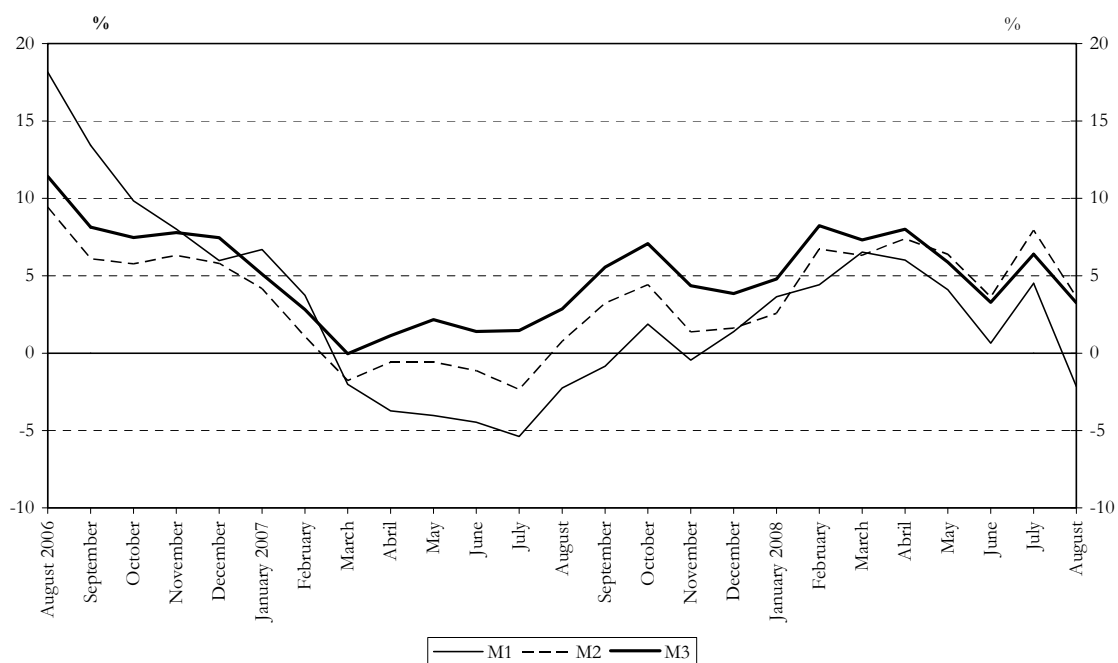


Chart 10 Real growth of the monetary aggregates⁵



⁶ Transactions-based growth rate (see the Methodological notes).

Chart 11 Seasonally adjusted M1

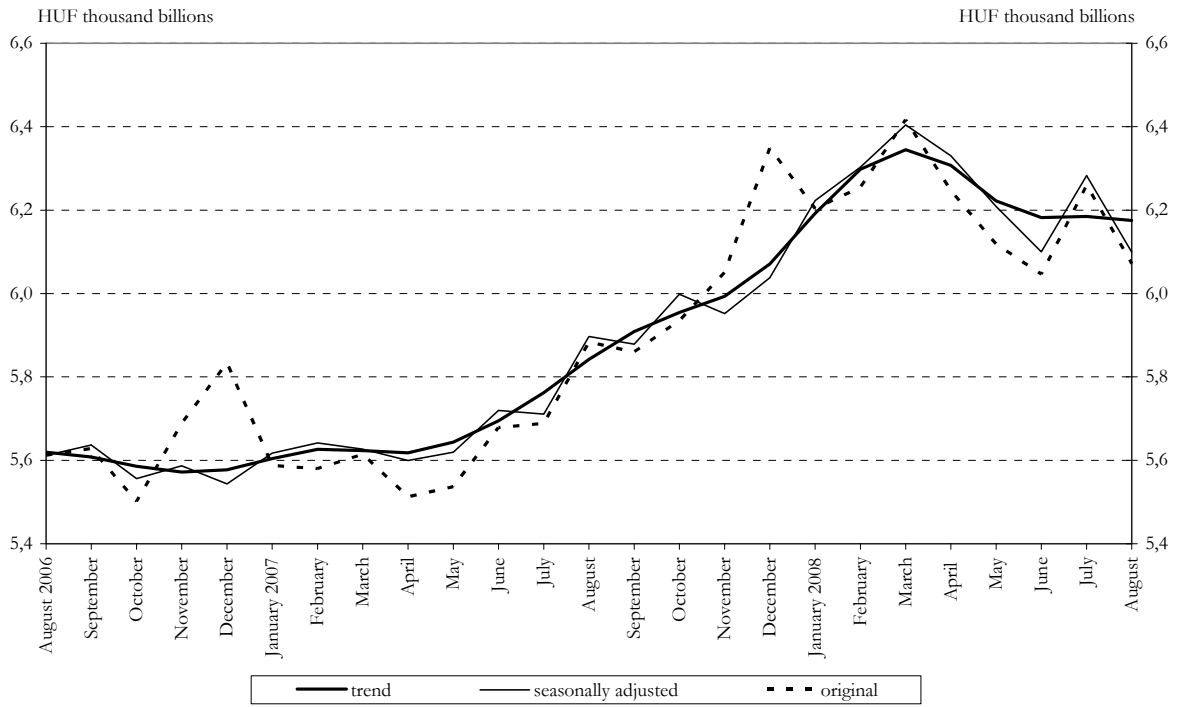


Chart 12 Seasonally adjusted M2

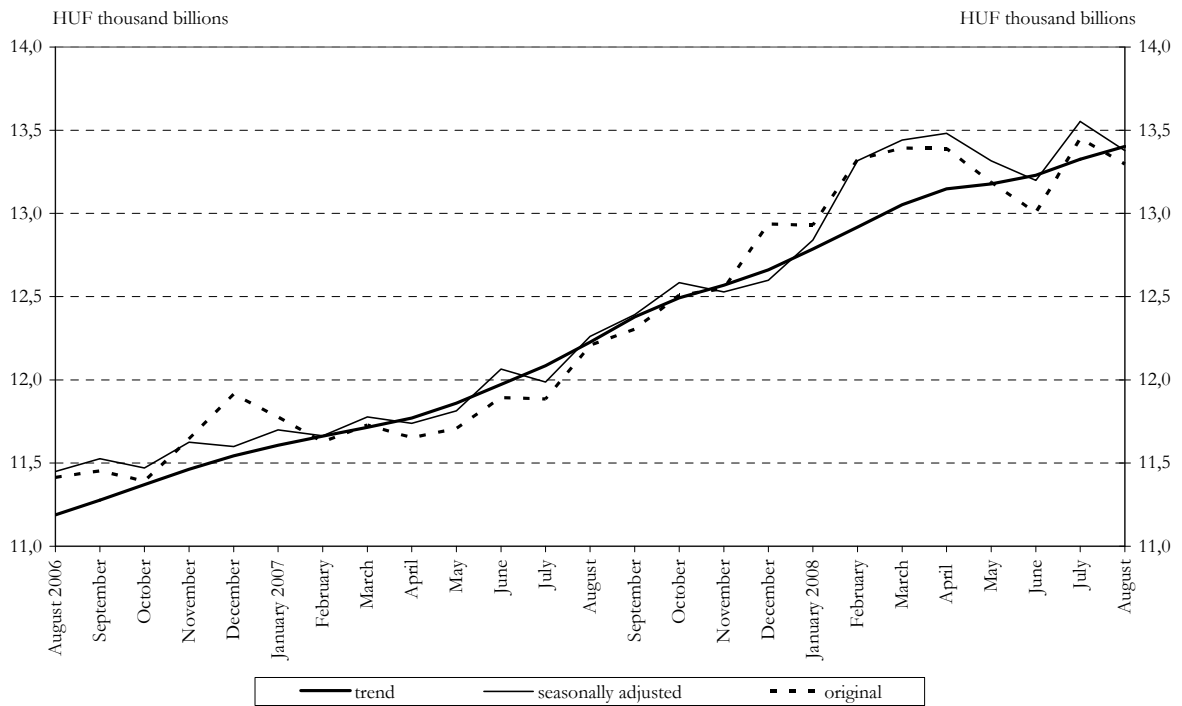


Chart 13 Seasonally adjusted M3

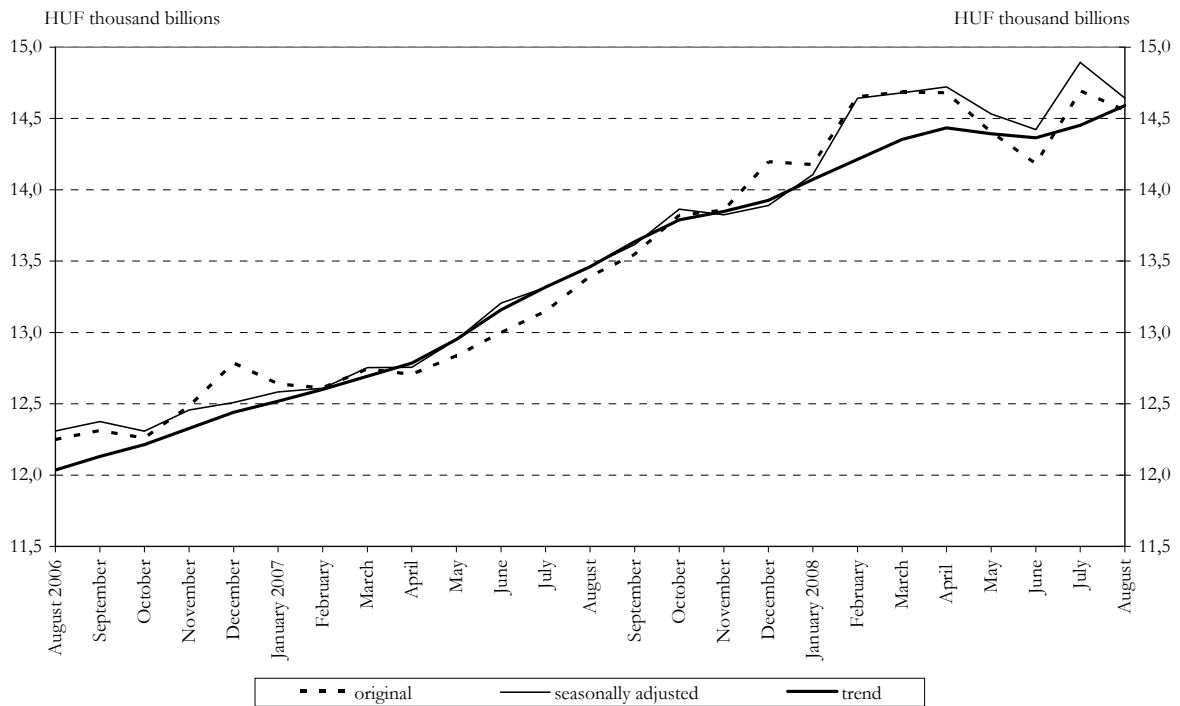


Chart 14 Total foreign exposure of credit institutions

