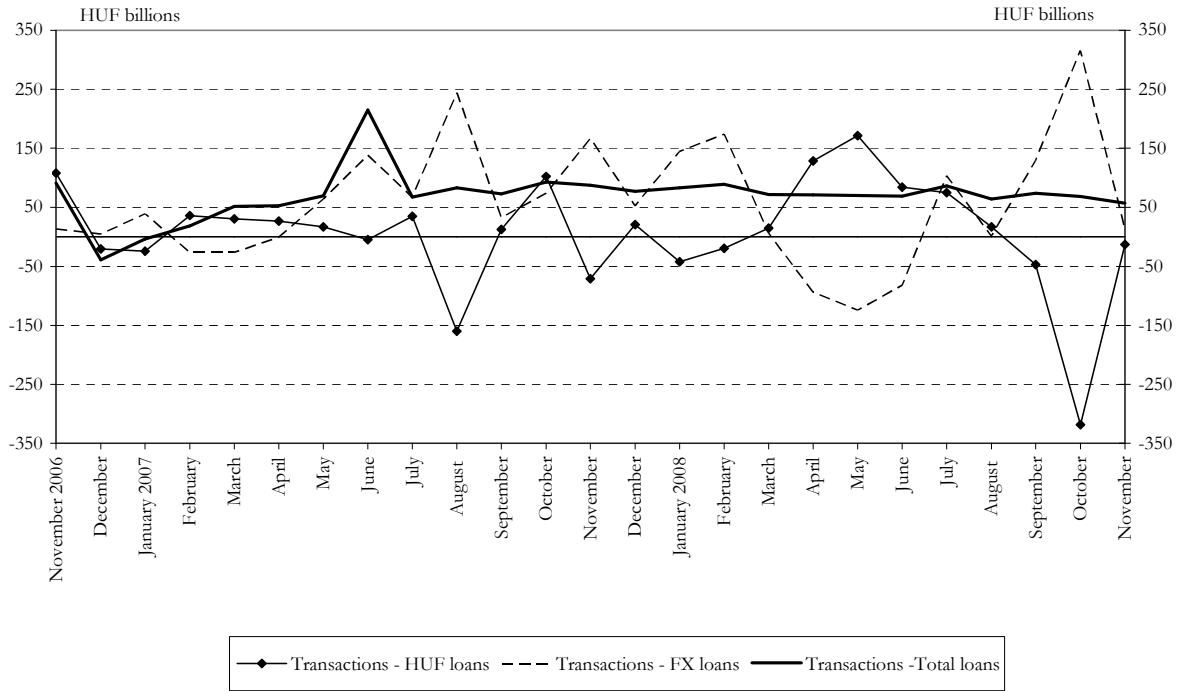


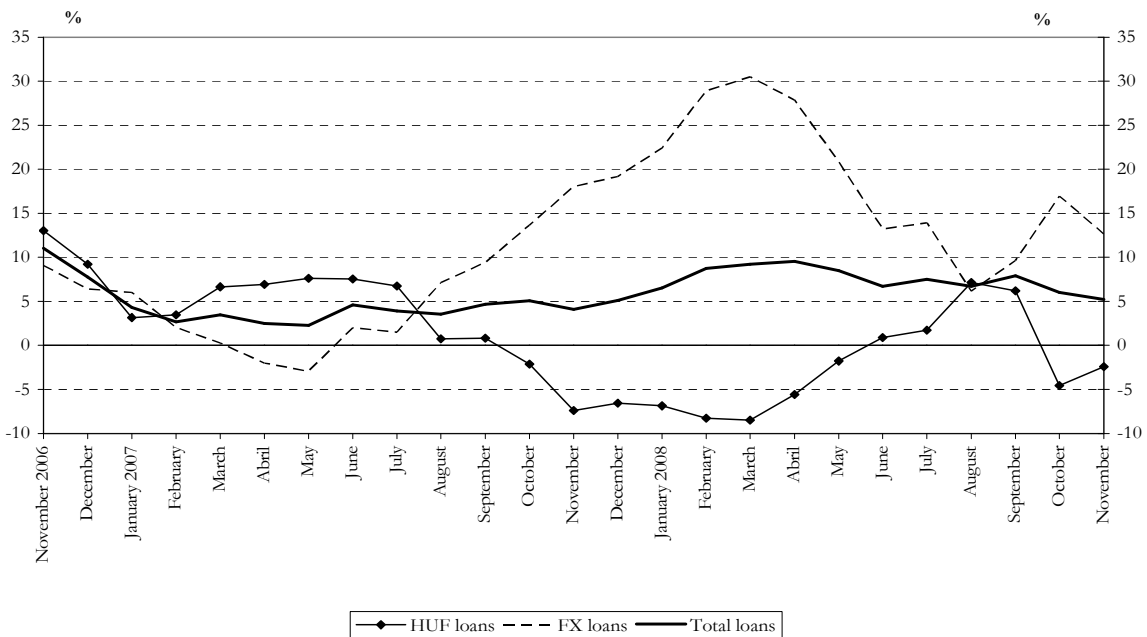
*Charts to the press release on the aggregated balance sheet of credit institutions*

*November 2008*

**Chart 1 Net borrowing by non-financial corporations – seasonally adjusted data**

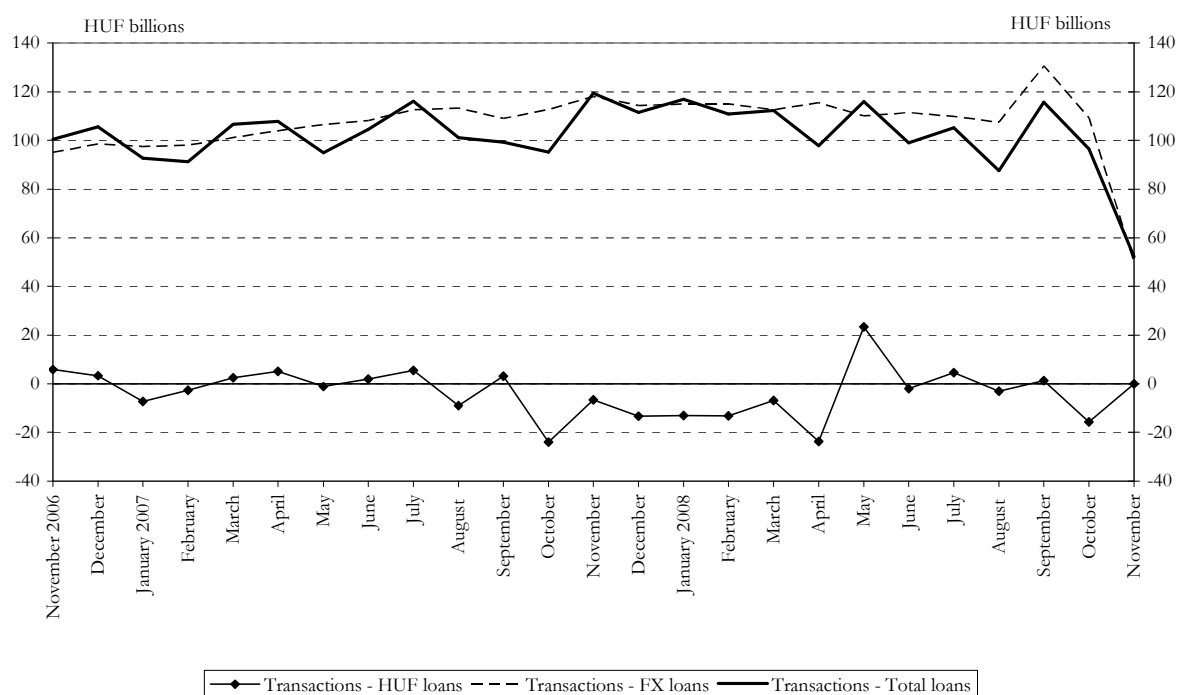


**Chart 2 Real growth of non-financial corporations' outstanding borrowing<sup>1</sup>**

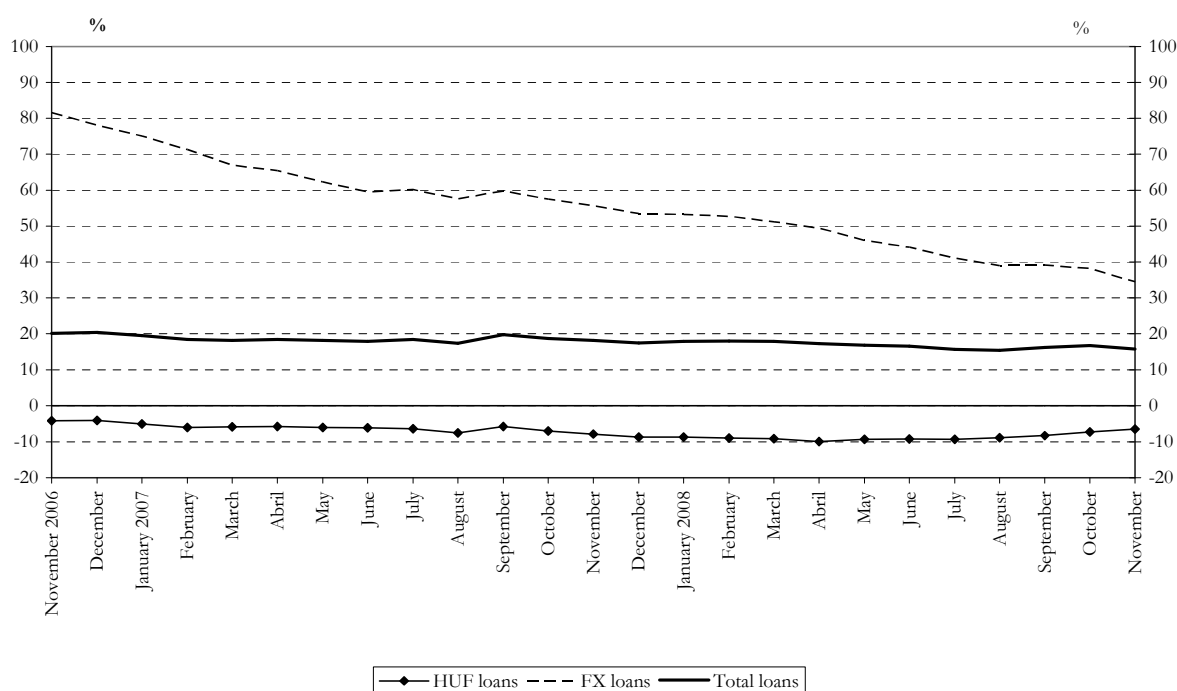


<sup>1</sup> Transactions-based growth rate (see the Methodological notes).

**Chart 3 Net borrowing by households – seasonally adjusted data**



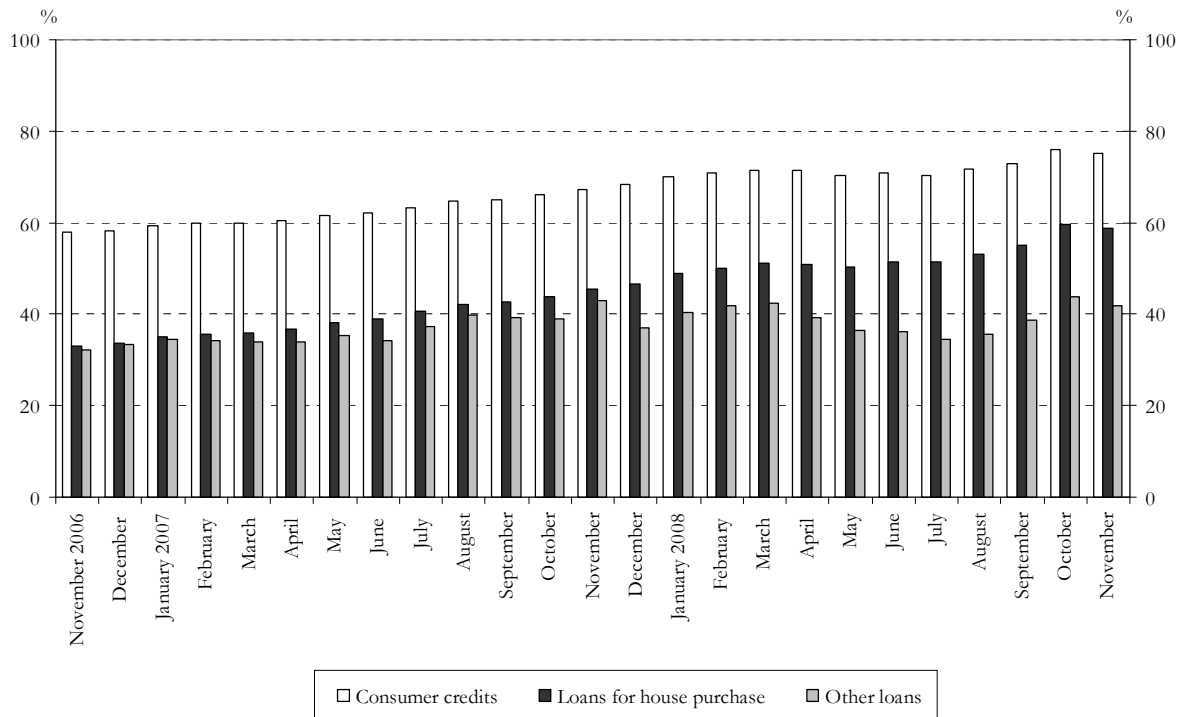
**Chart 4 Real growth of households' outstanding borrowing<sup>2 3</sup>**



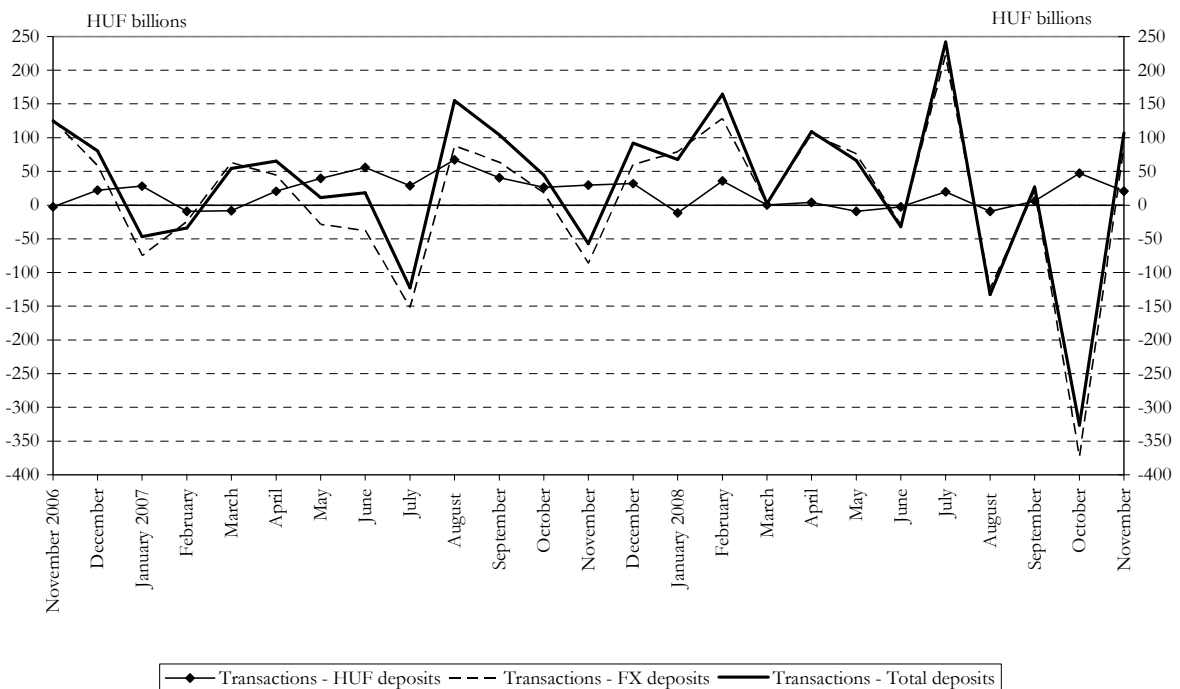
<sup>2</sup> Transactions-based growth rate (see the Methodological notes).

<sup>3</sup> For an interpretation of the trend plotted on the chart, see the Methodological notes.

**Chart 5 Percentage shares of households' foreign currency loans within the individual categories of loans**

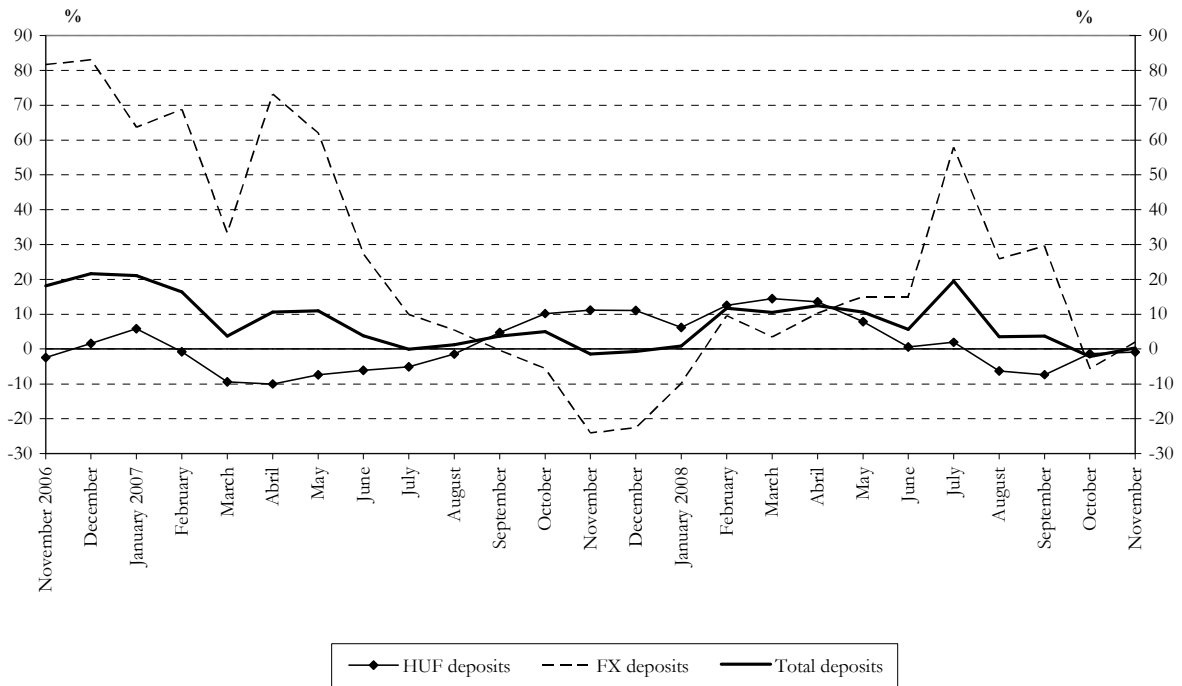


**Chart 6 Net deposits of non-financial corporations – seasonally adjusted data<sup>4</sup>**

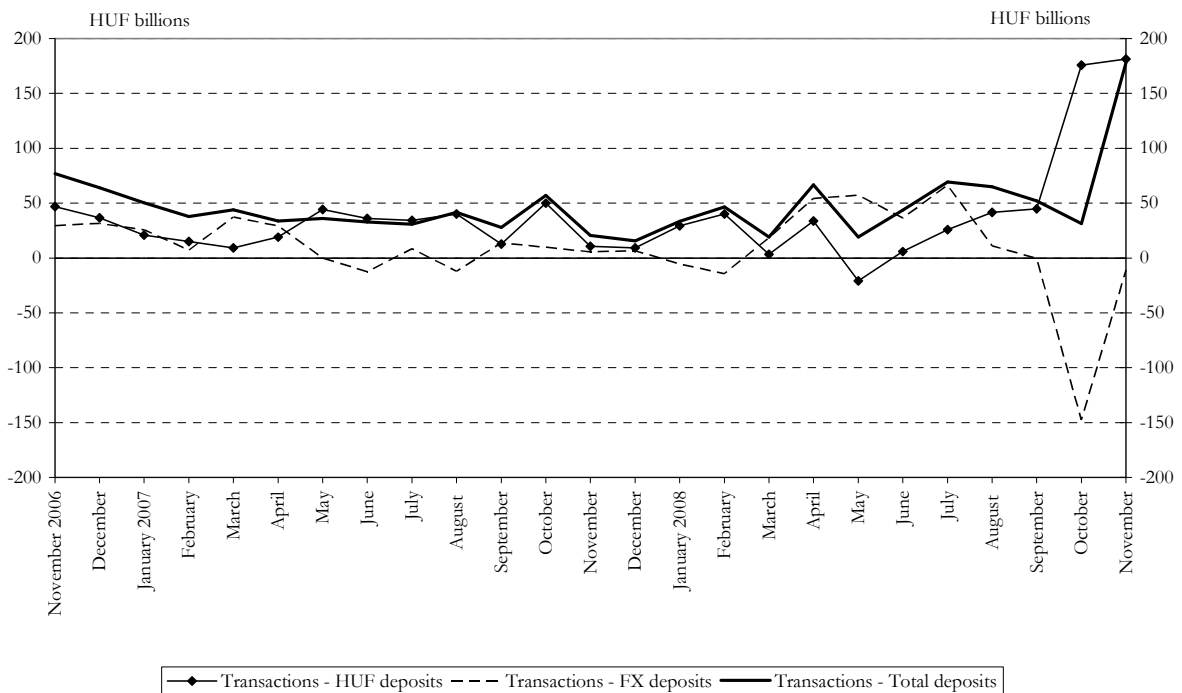


<sup>4</sup> Indirect adjustment in the case of total deposits.

**Chart 7 Real growth of non-financial corporations' deposits<sup>5</sup>**

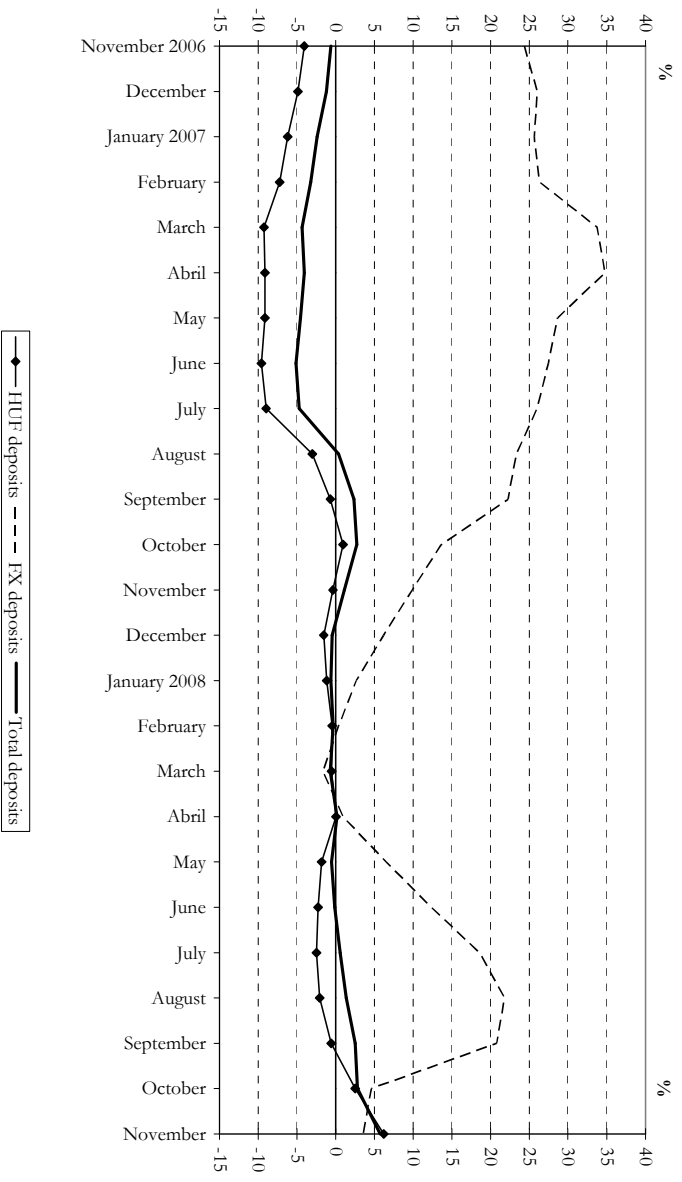


**Chart 8 Net deposits of households – seasonally adjusted data**

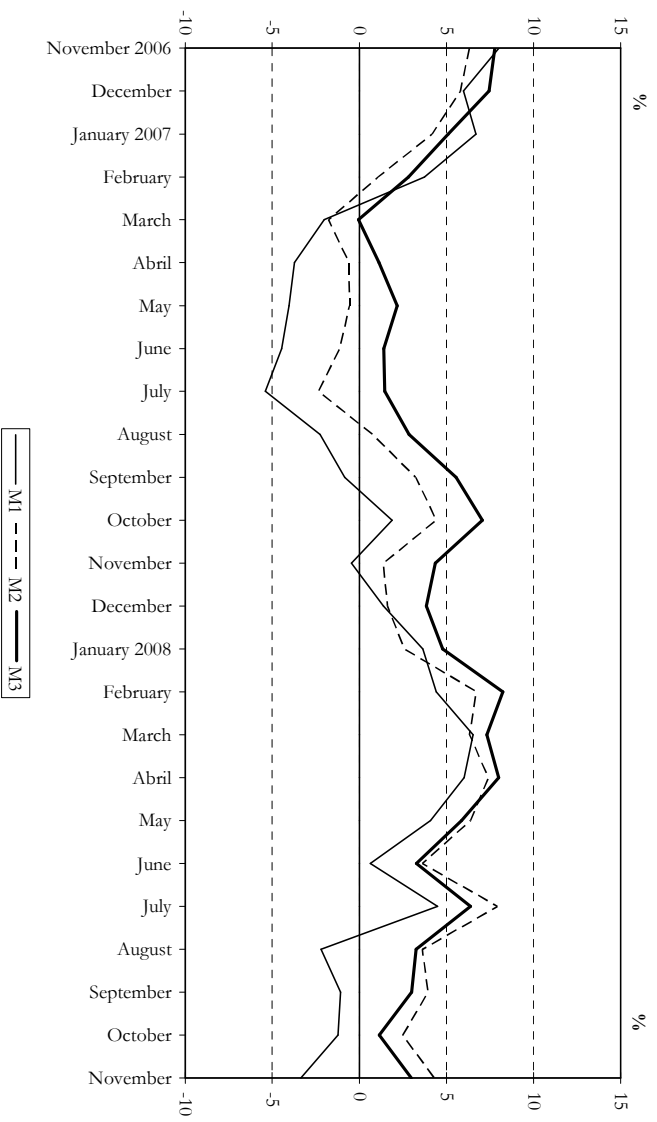


<sup>5</sup> Transactions-based growth rate (see the Methodological notes).

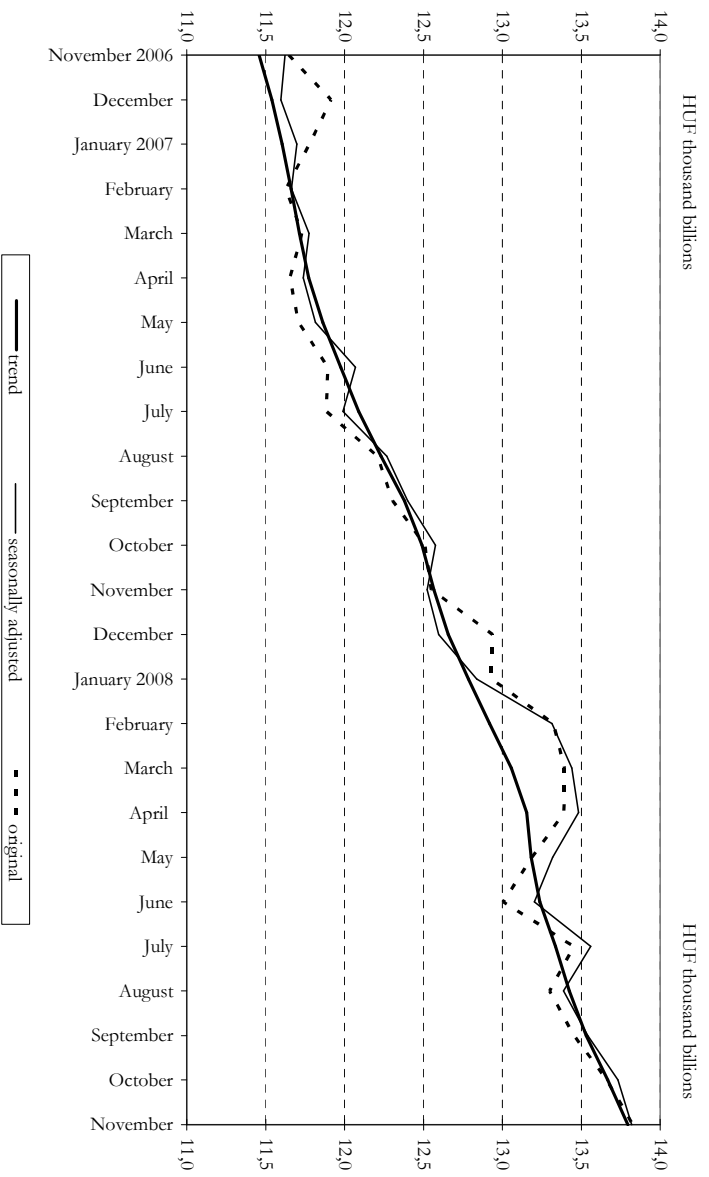
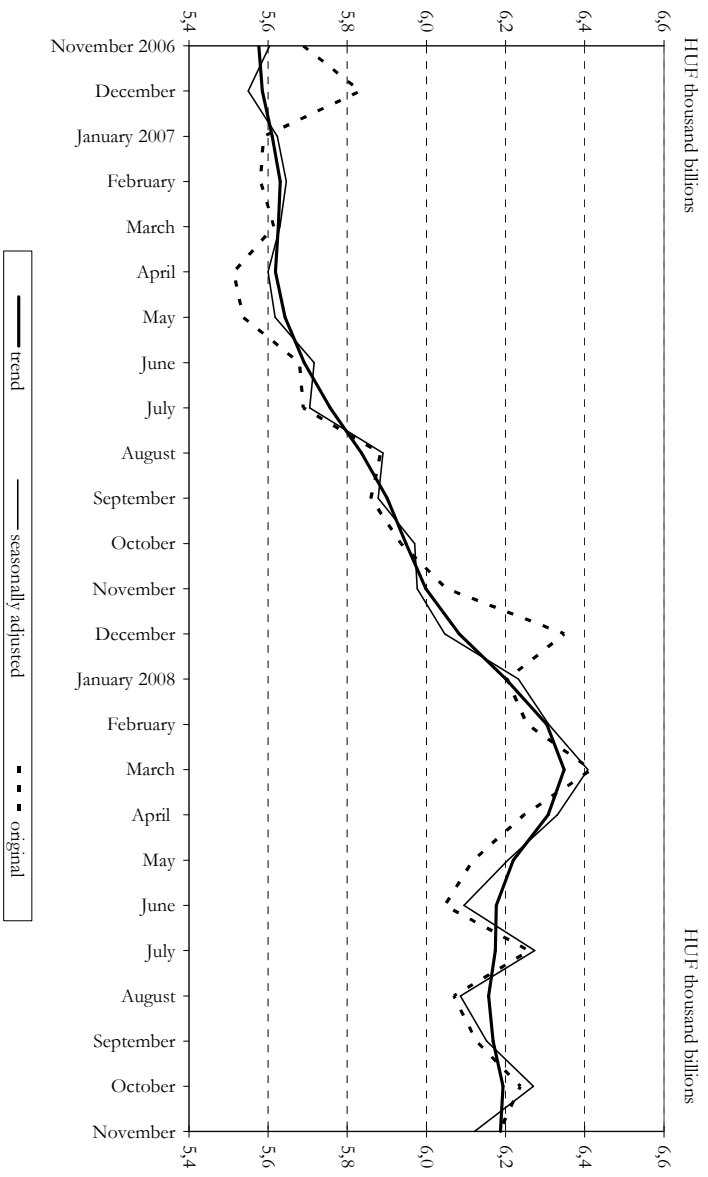
**Chart 9 Real growth of household deposits<sup>6</sup>**



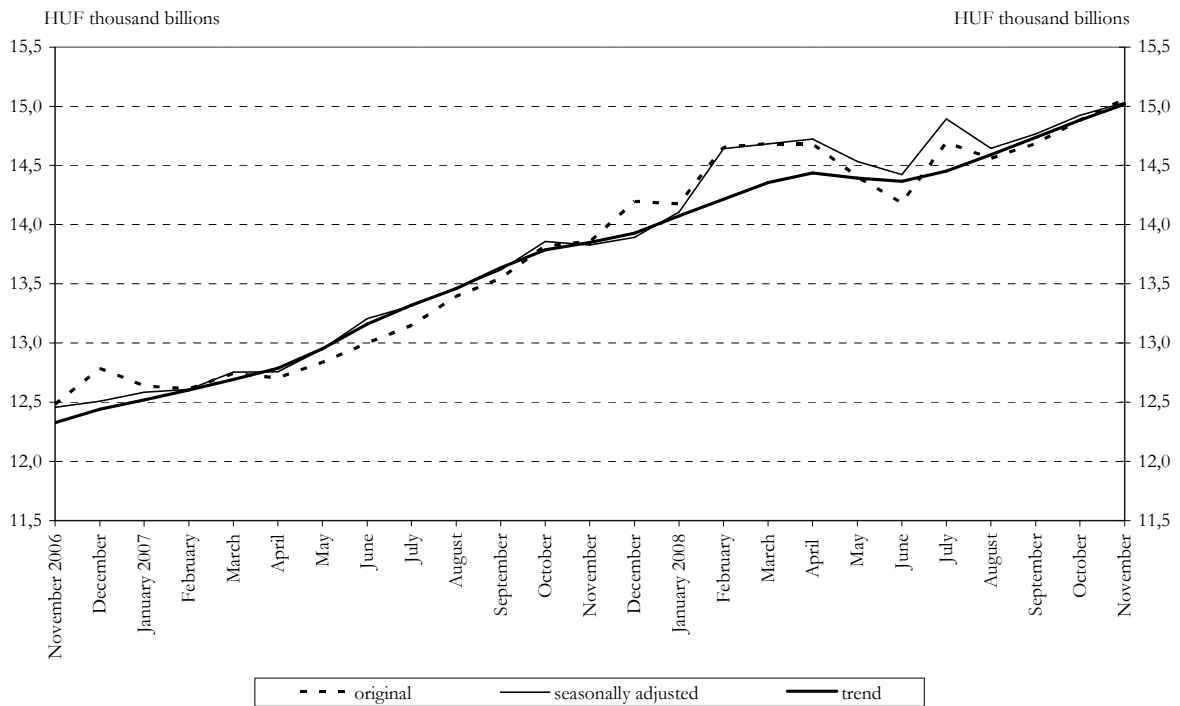
**Chart 10 Real growth of the monetary aggregates<sup>5</sup>**



<sup>6</sup> Transactions-based growth rate (see the Methodological notes).



**Chart 13 Seasonally adjusted M3**



**Chart 14 Total foreign exposure of credit institutions**

