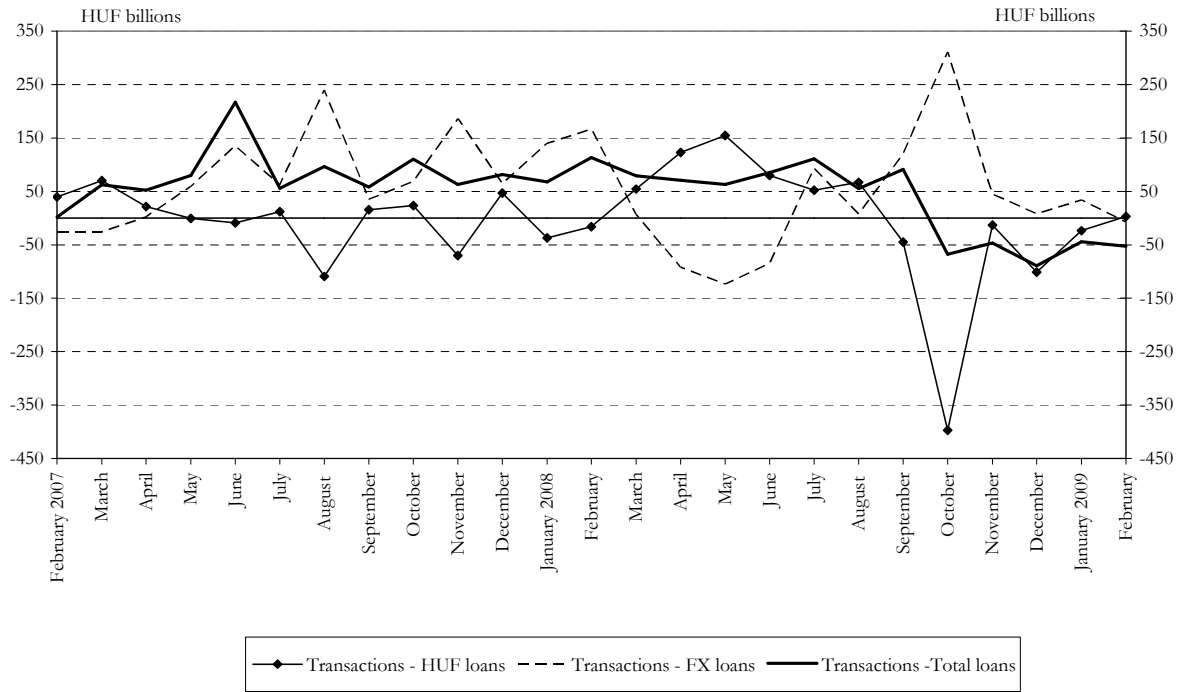


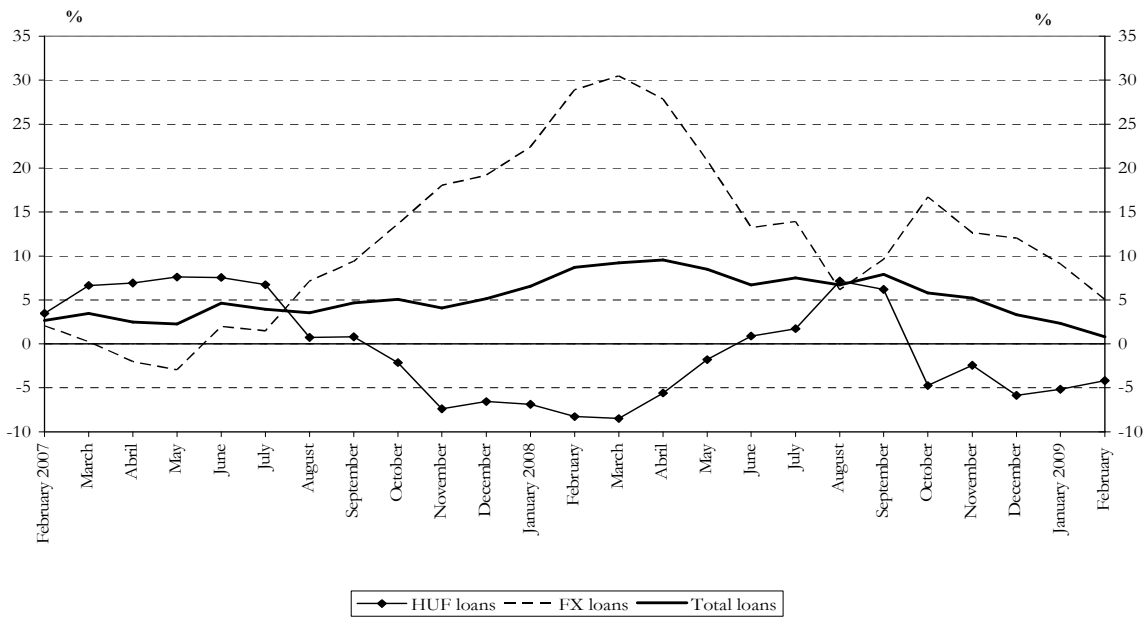
*Charts to the press release on the aggregated balance sheet of credit institutions*

*February 2009*

**Chart 1 Seasonally adjusted net new borrowing by non-financial corporations, after eliminating exchange rate effects**

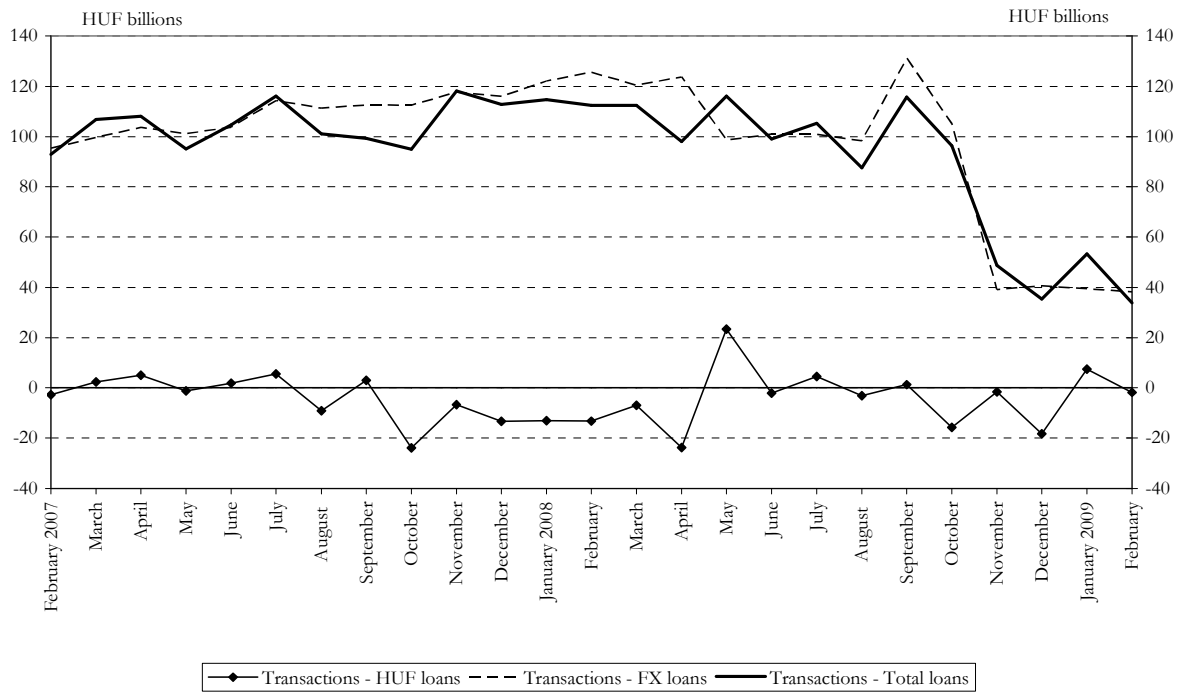


**Chart 2 Real growth of non-financial corporations' outstanding borrowing<sup>1</sup>**

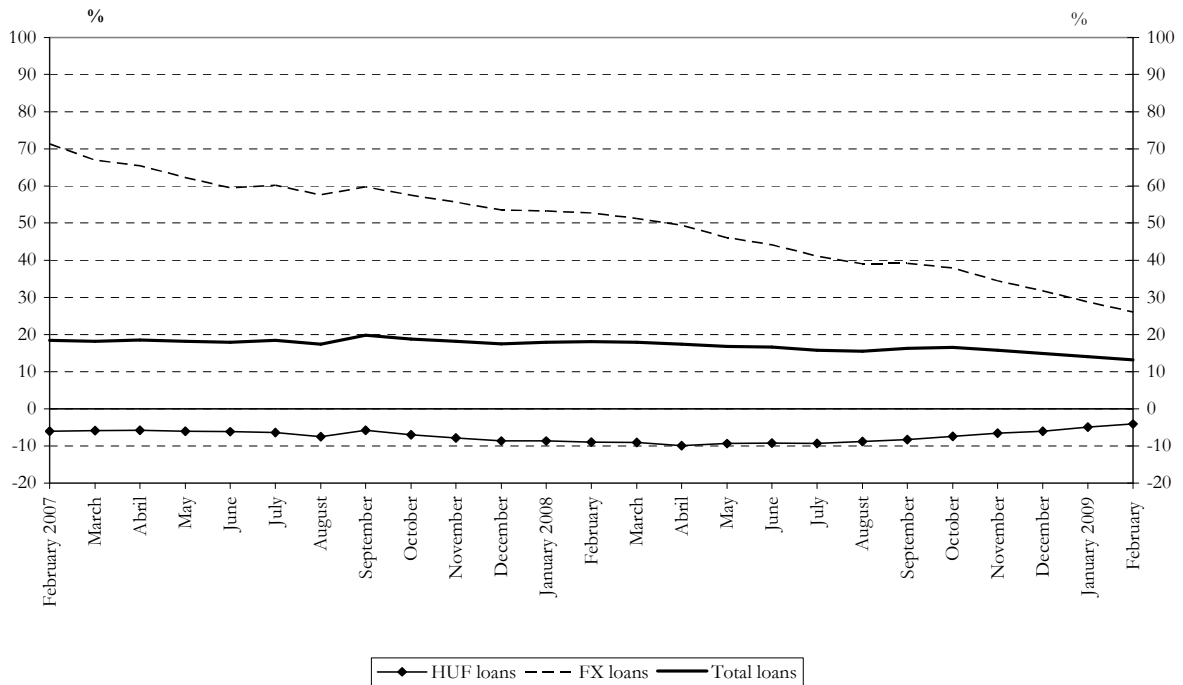


<sup>1</sup> Transactions-based growth rate (see the Methodological notes).

**Chart 3 Seasonally adjusted net new borrowing by households, after eliminating exchange rate effects**



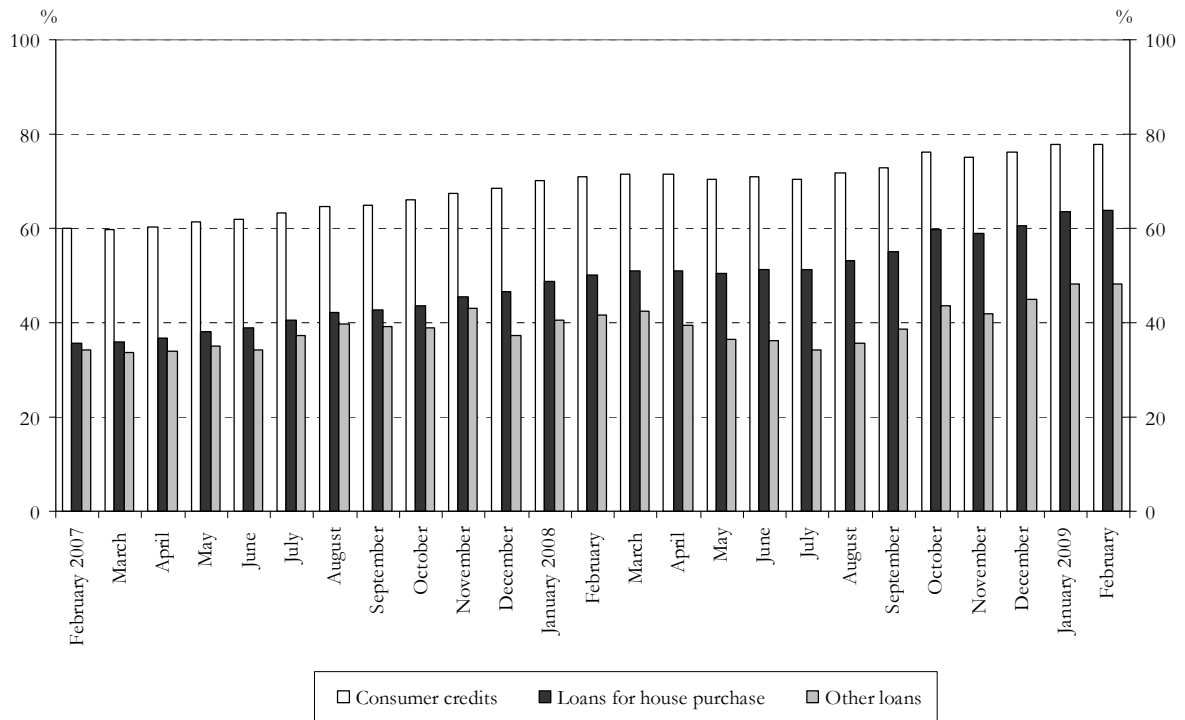
**Chart 4 Real growth of households' outstanding borrowing<sup>2 3</sup>**



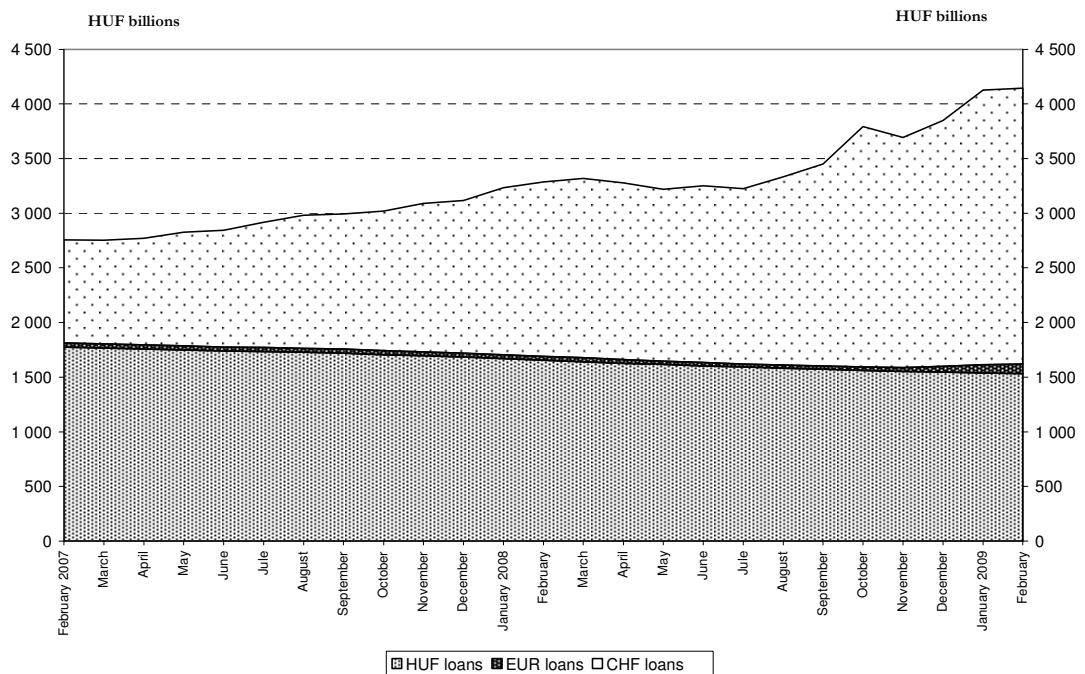
<sup>2</sup> Transactions-based growth rate (see the Methodological notes).

<sup>3</sup> For an interpretation of the trend plotted on the chart, see the Methodological notes.

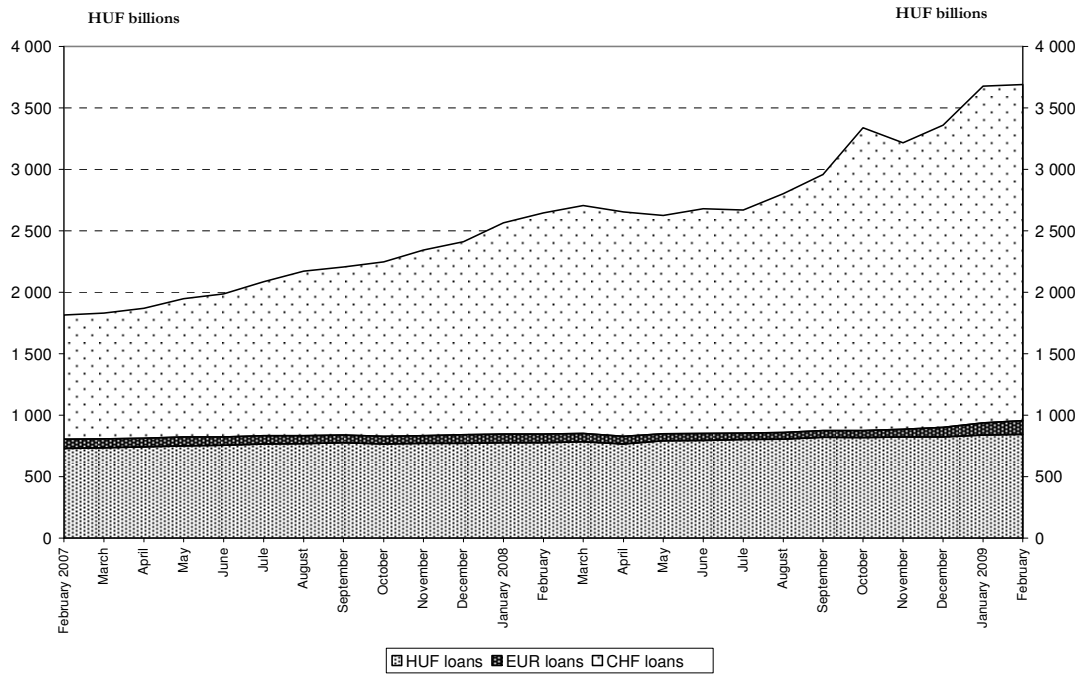
**Chart 5 Percentage shares of households' foreign currency loans within the individual categories of loans**



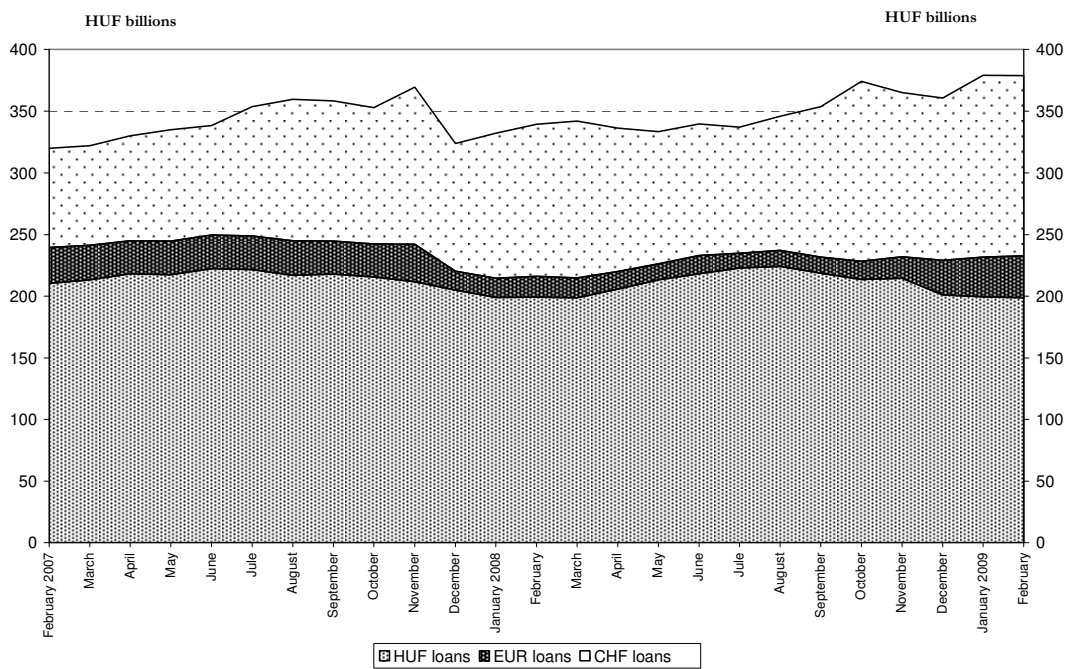
**Chart 6 Outstanding forint, euro and Swiss franc-denominated housing loans of households**



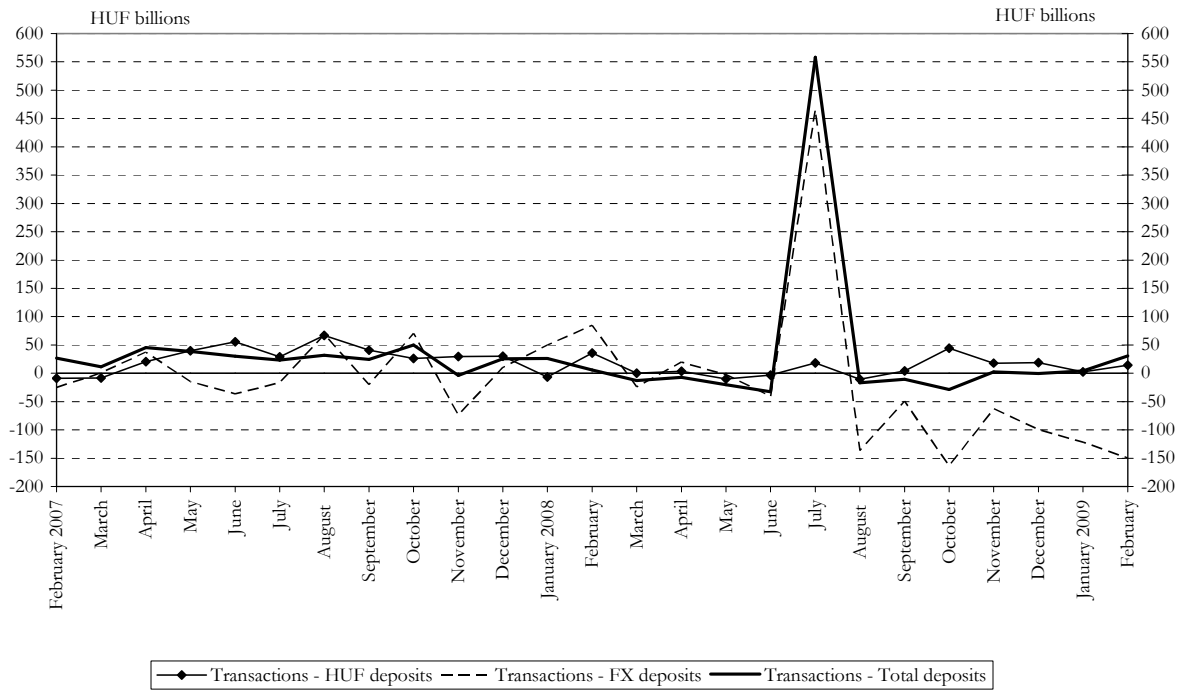
**Chart 7 Outstanding forint, euro and Swiss franc-denominated consumer loans of households**



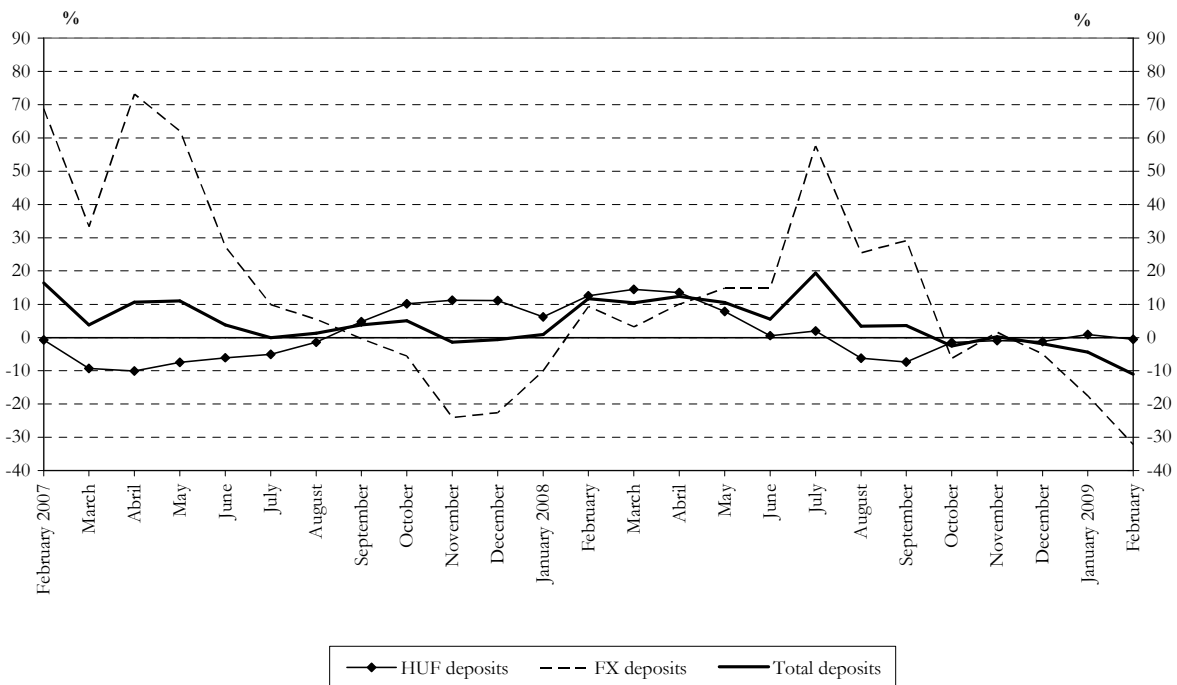
**Chart 8 Outstanding forint, euro and Swiss franc-denominated other loans of households**



**Chart 9 Seasonally adjusted net new deposits of non-financial corporations, after eliminating exchange rate effects**

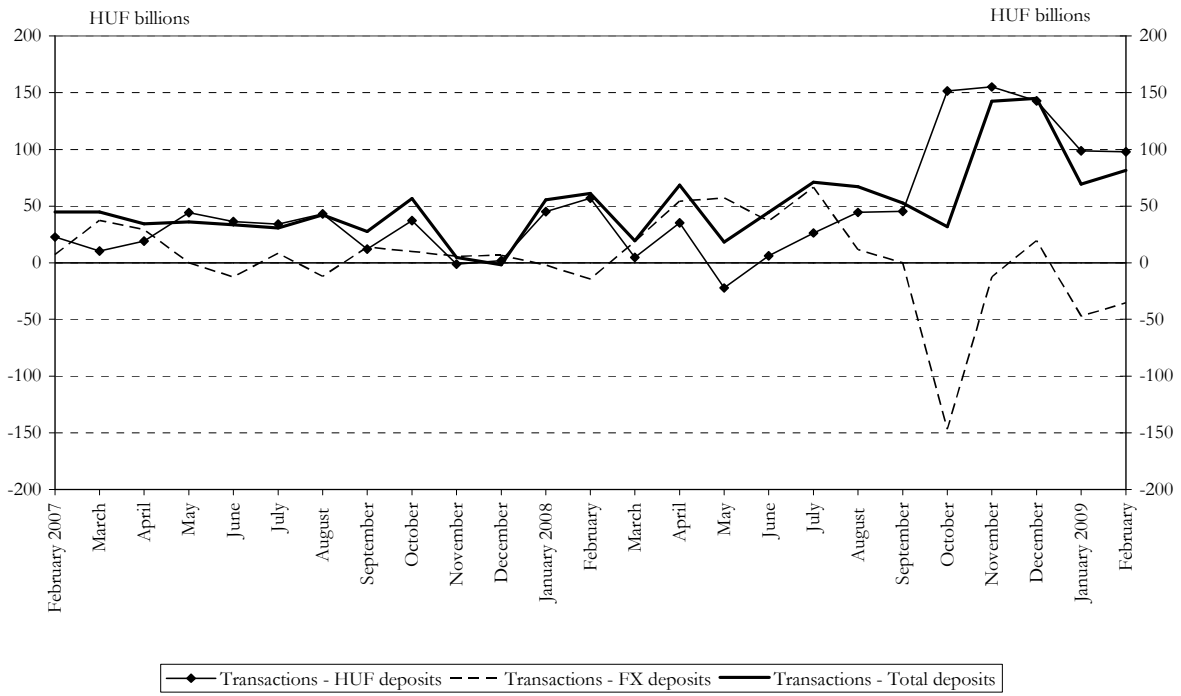


**Chart 10 Real growth of non-financial corporations' deposits<sup>4</sup>**



<sup>4</sup> Transactions-based growth rate (see the Methodological notes).

**Chart 11 Seasonally adjusted net new deposits of households, after eliminating exchange rate effects**



**Chart 12 Real growth of household deposits<sup>4</sup>**

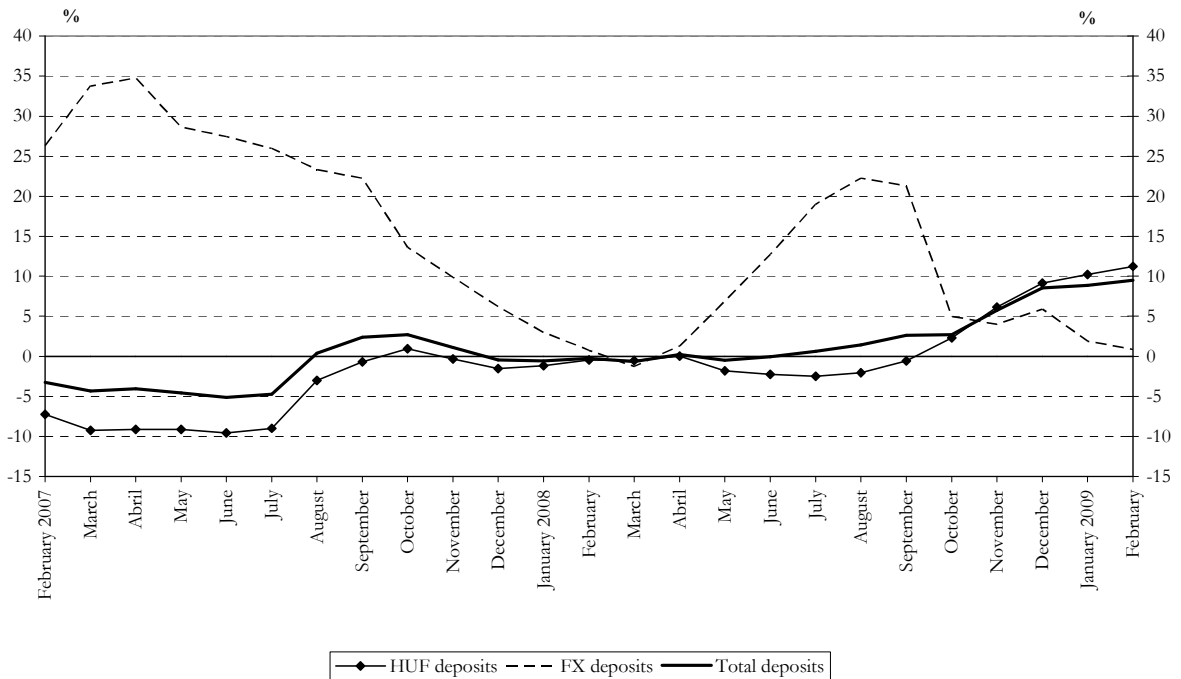


Chart 13 Real growth of the monetary aggregates<sup>4</sup>

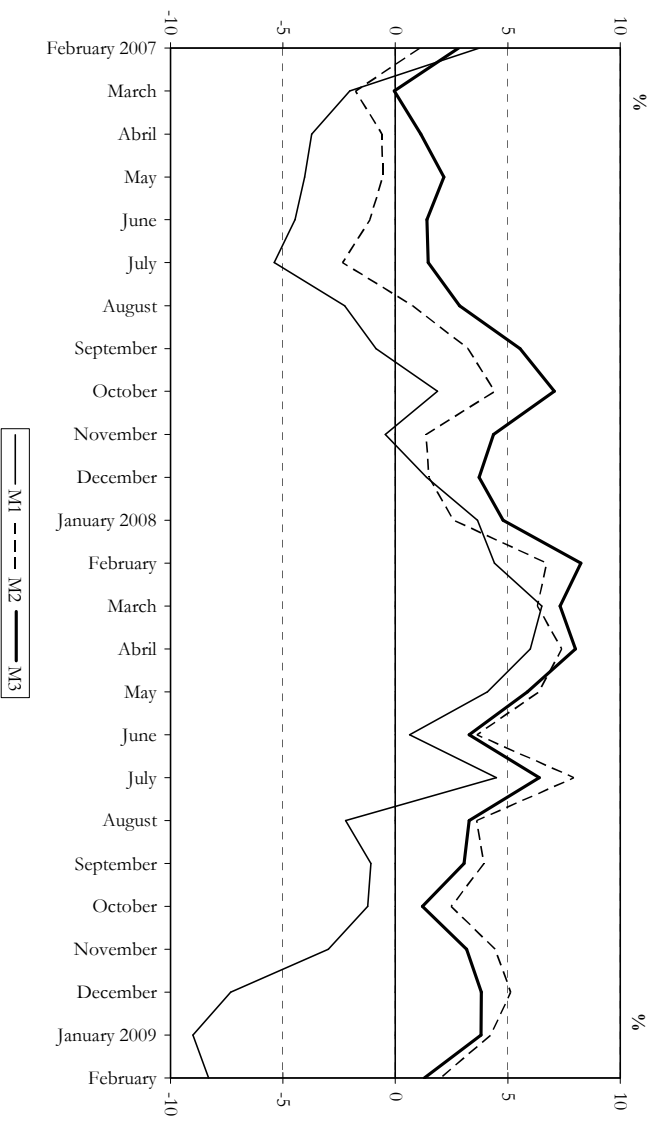
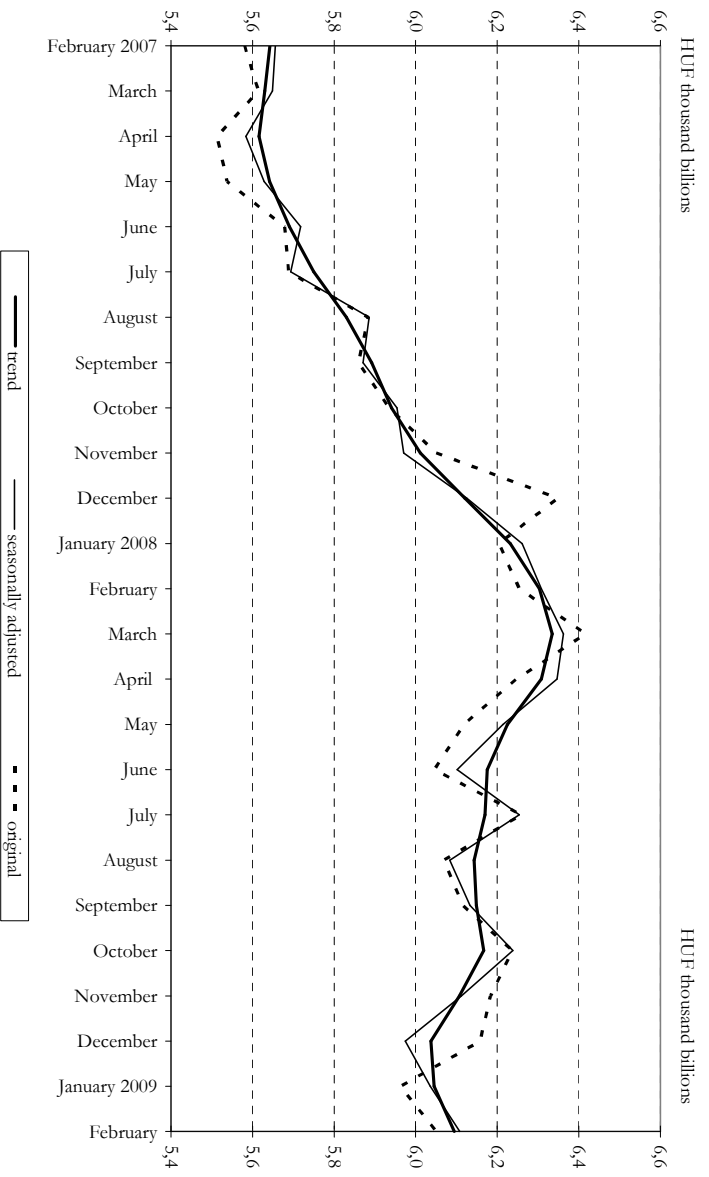
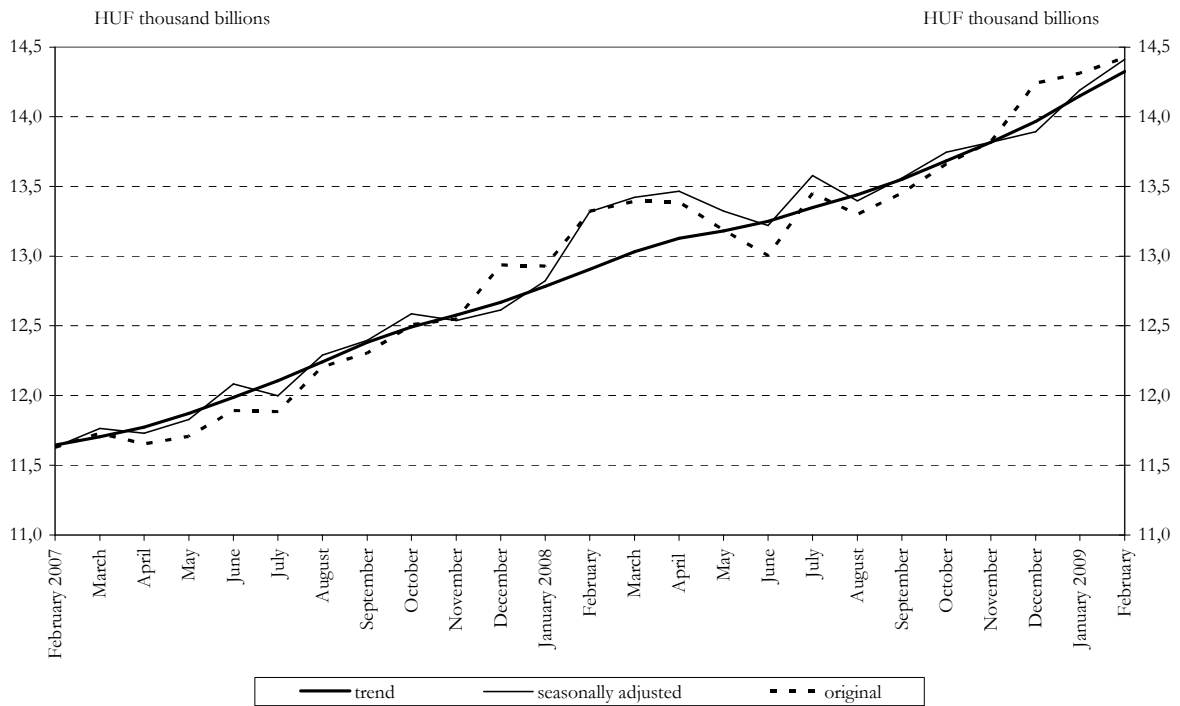


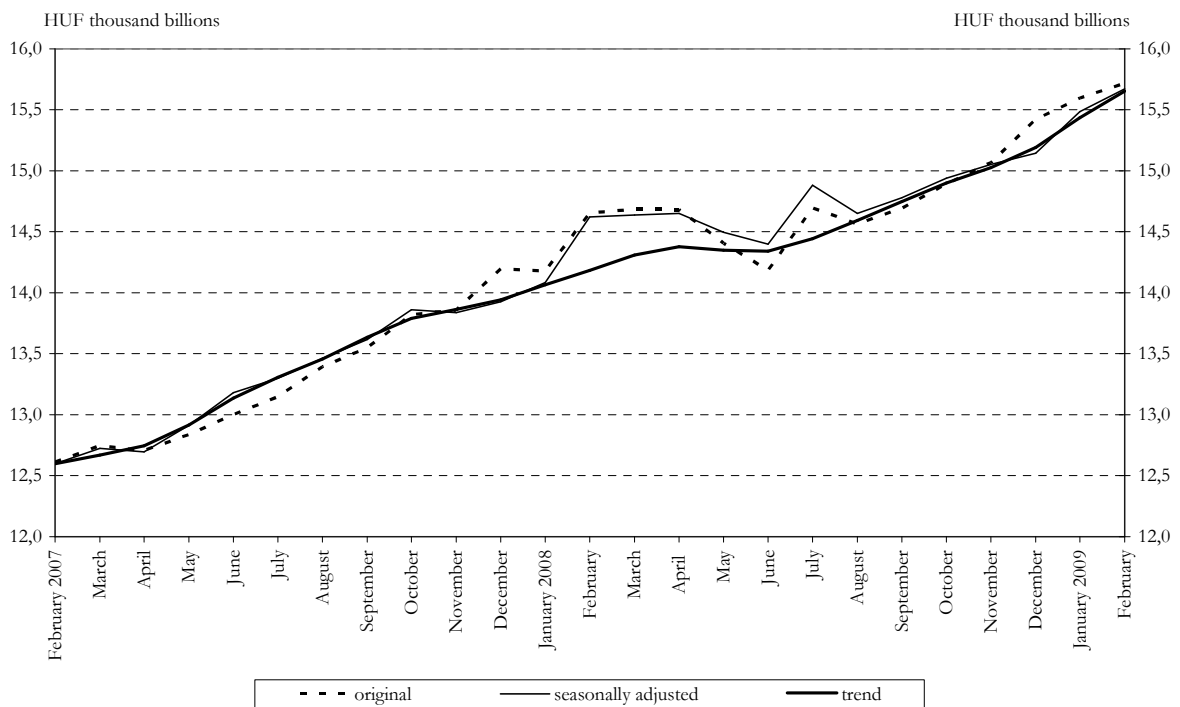
Chart 14 Seasonally adjusted M1



**Chart 15 Seasonally adjusted M2**



**Chart 16 Seasonally adjusted M3**





**Chart 17 Total foreign exposure of credit institutions**

