

Chart-pack to the Press Release on the preliminary statistical balance sheet of the MNB

November 2011

Chart 1 Reserve requirements of credit institutions

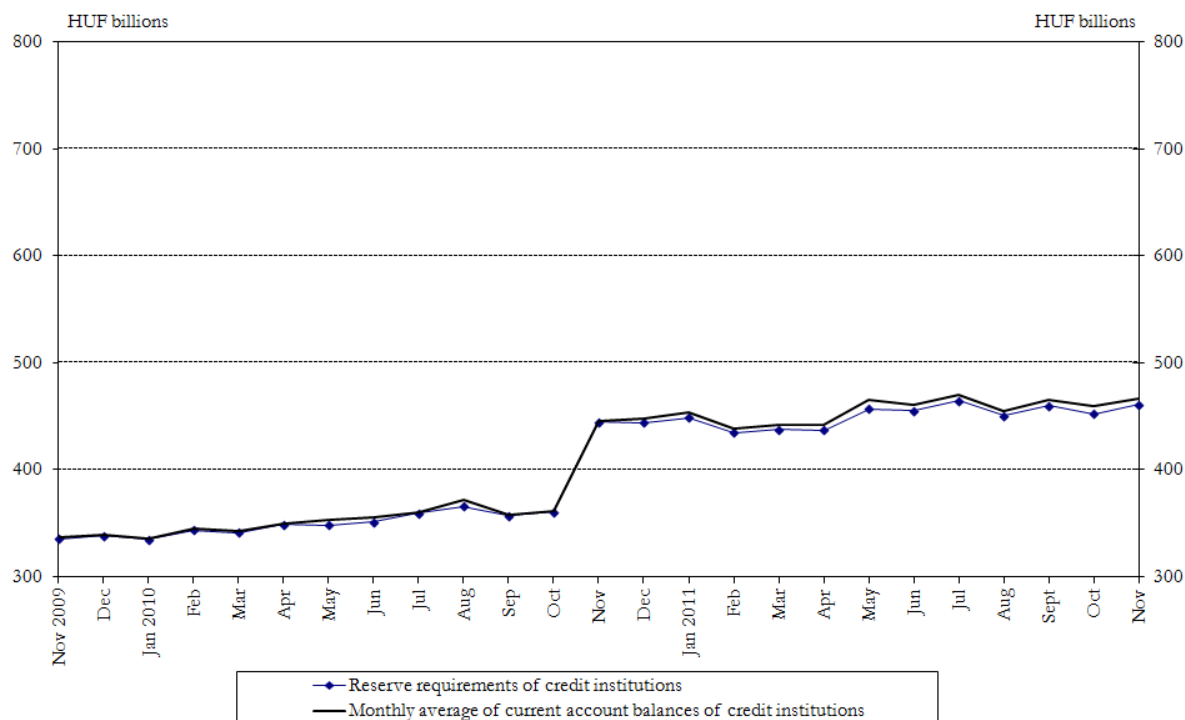


Chart 2 Reserve surpluses of credit institutions

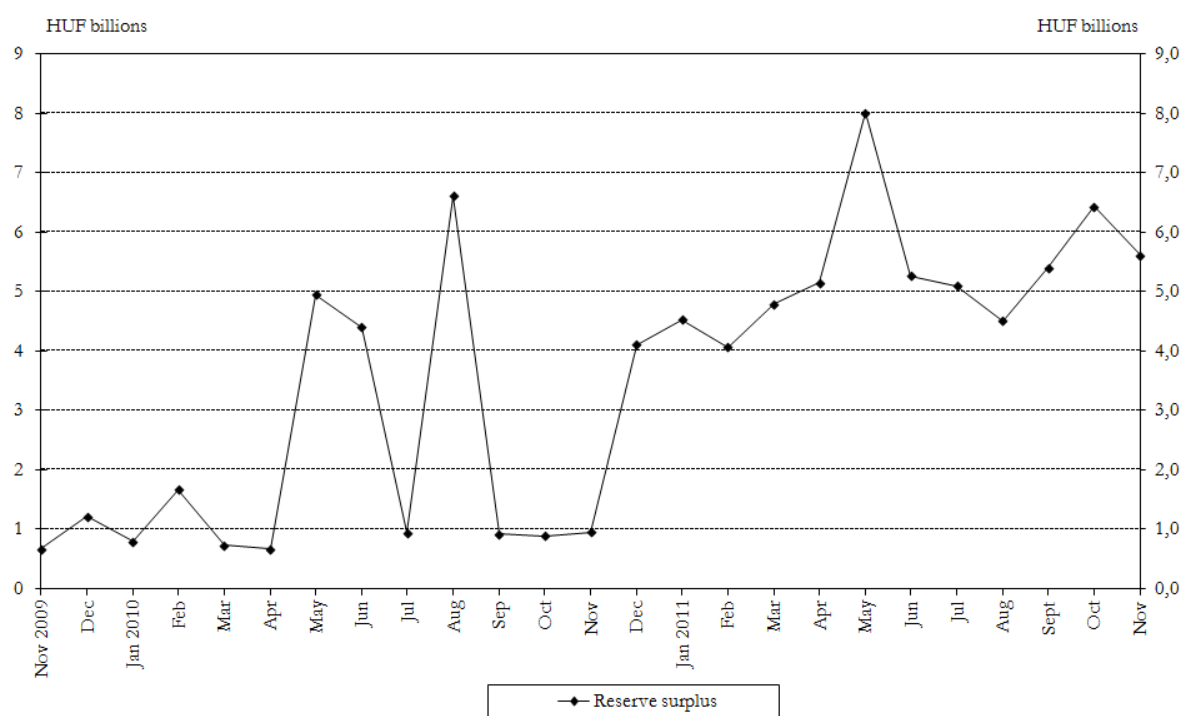


Chart 3 Components of the monetary base

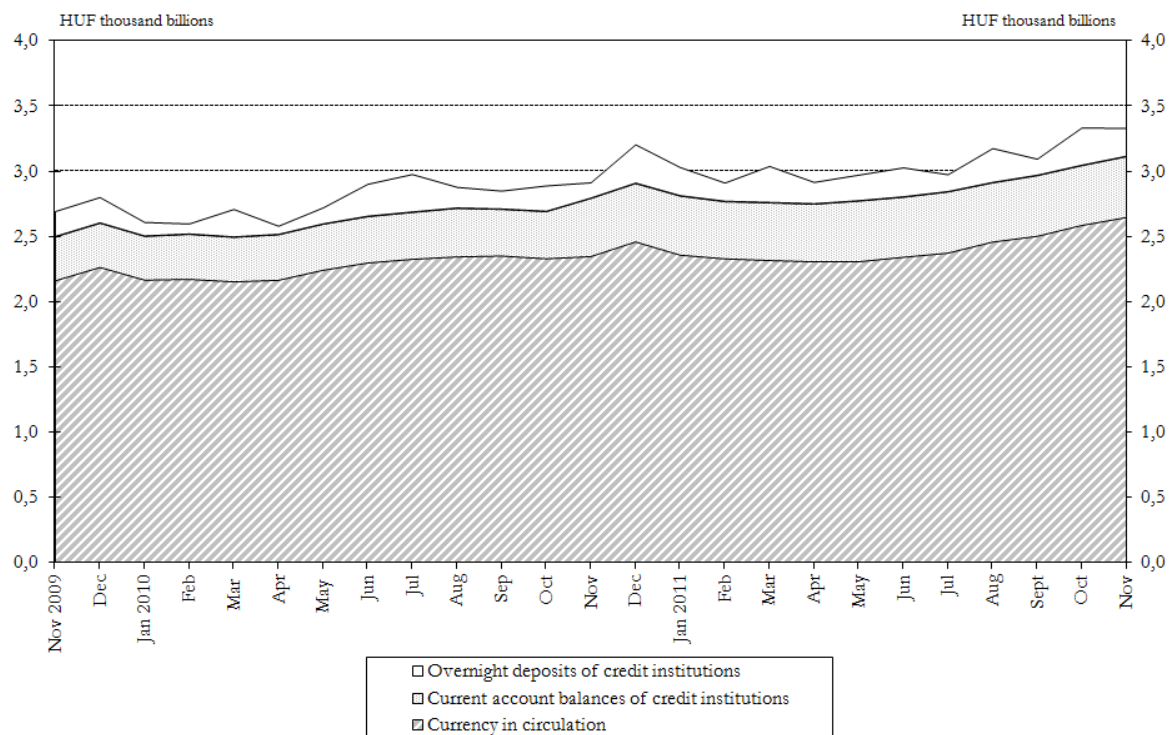
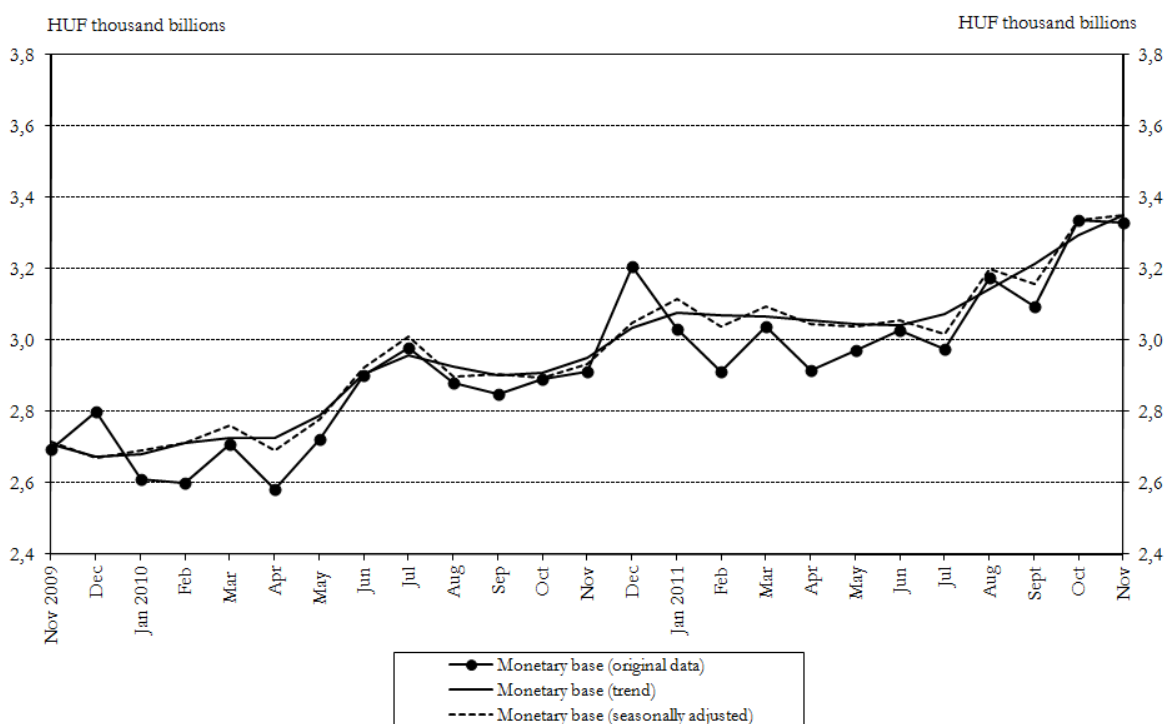


Chart 4 Changes in the monetary base¹



¹ See the Methodological notes.

Chart 5 Monthly average stocks of currency in circulation

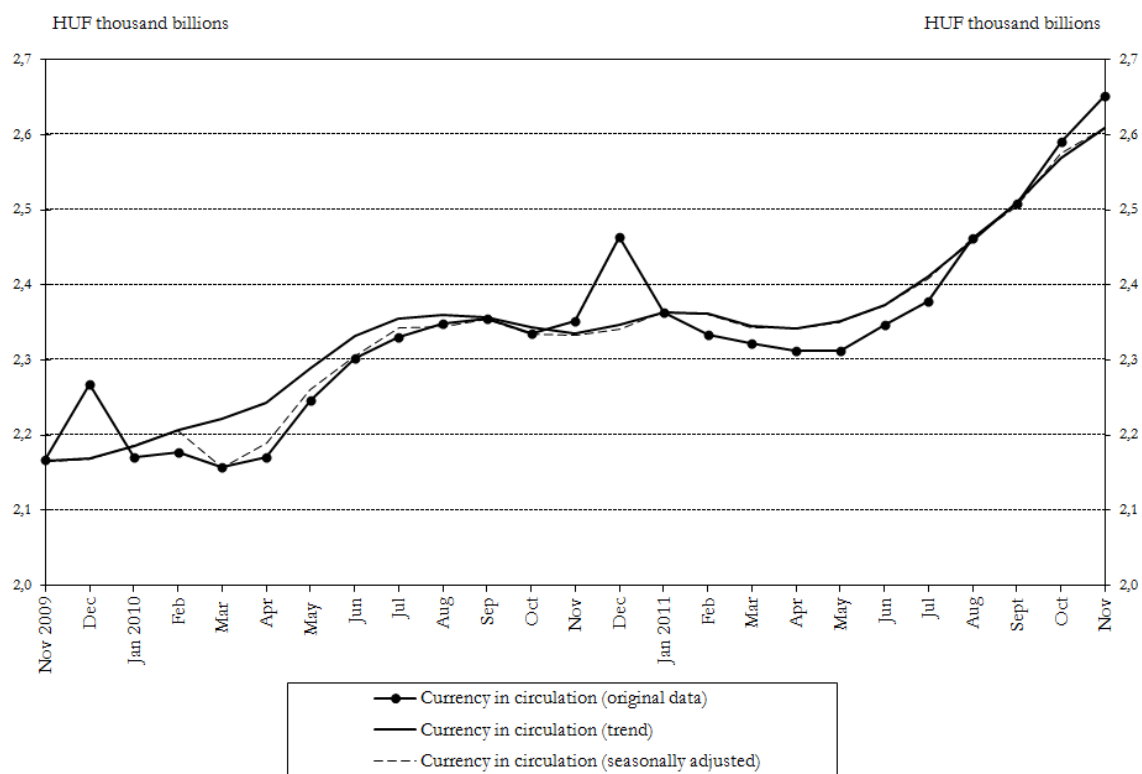
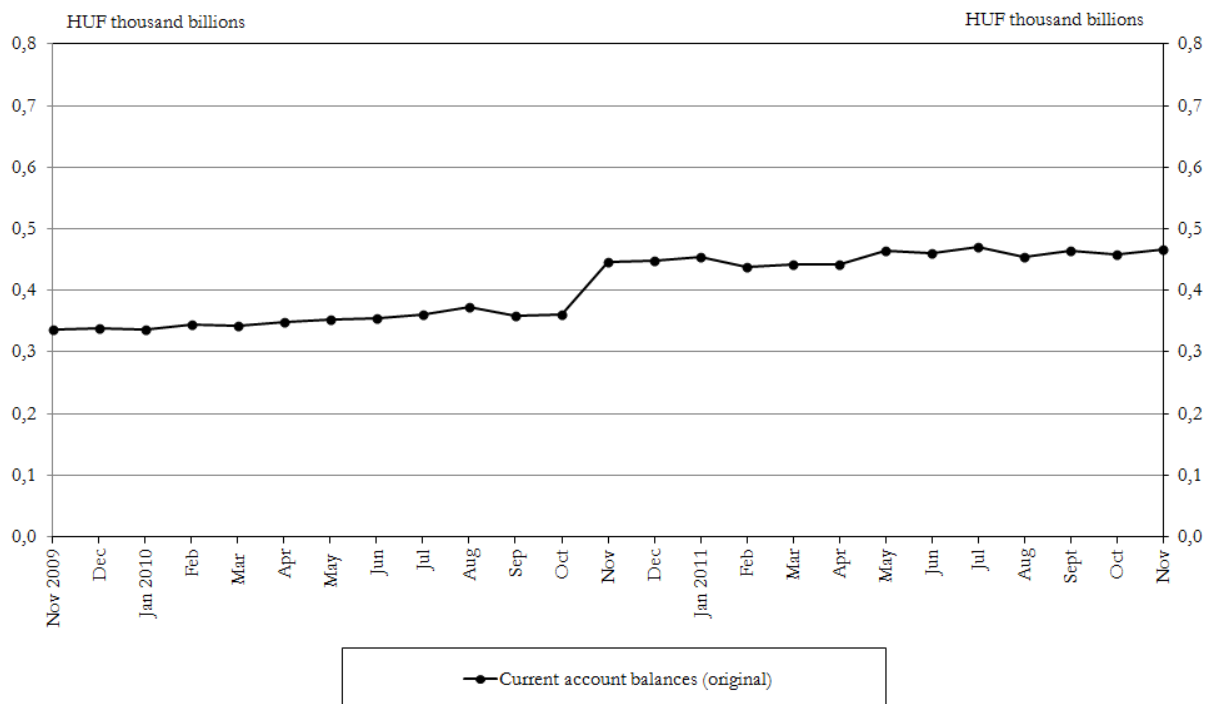


Chart 6 Monthly average of credit institutions' current account holdings^{2 3}



² See the Methodological notes.

³ Seasonal adjustment did not produce a meaningful result, due to the considerable change in the behaviour of the time series from November 2010 as a result of the transition to the flexible reserve maintenance scheme. Consequently, the seasonally adjusted and trend data are not published.

Chart 7 Monthly average of credit institutions' overnight deposits

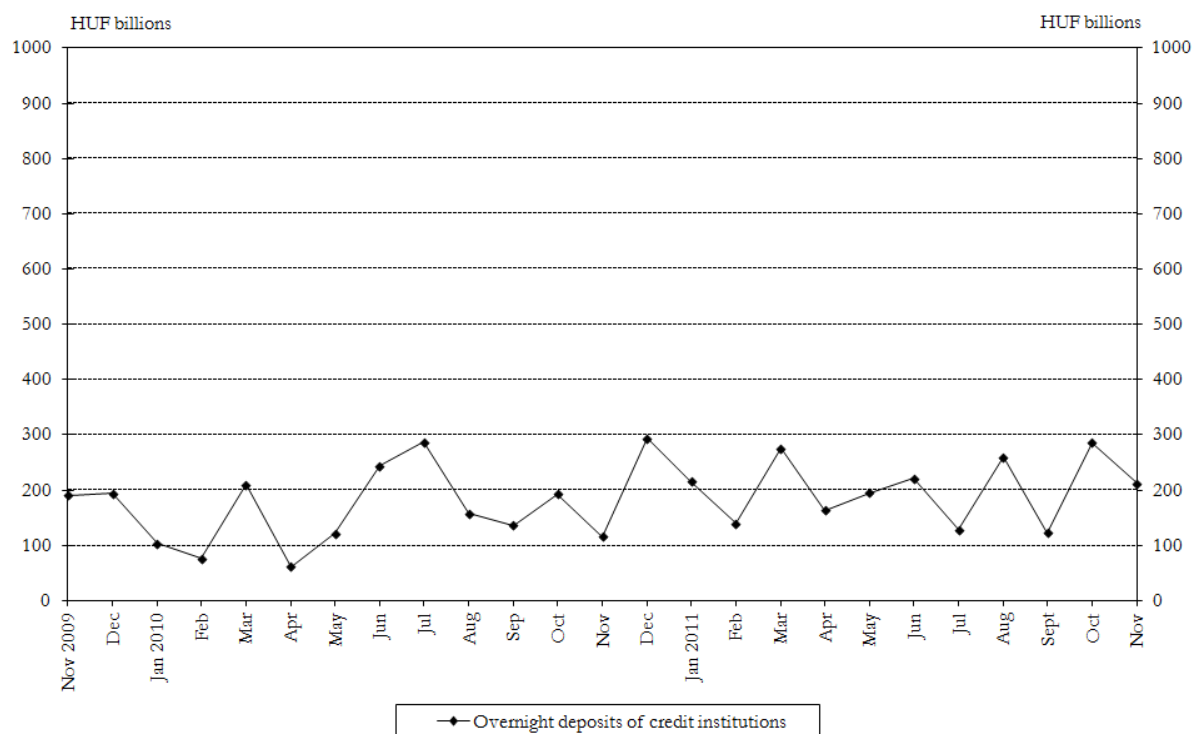
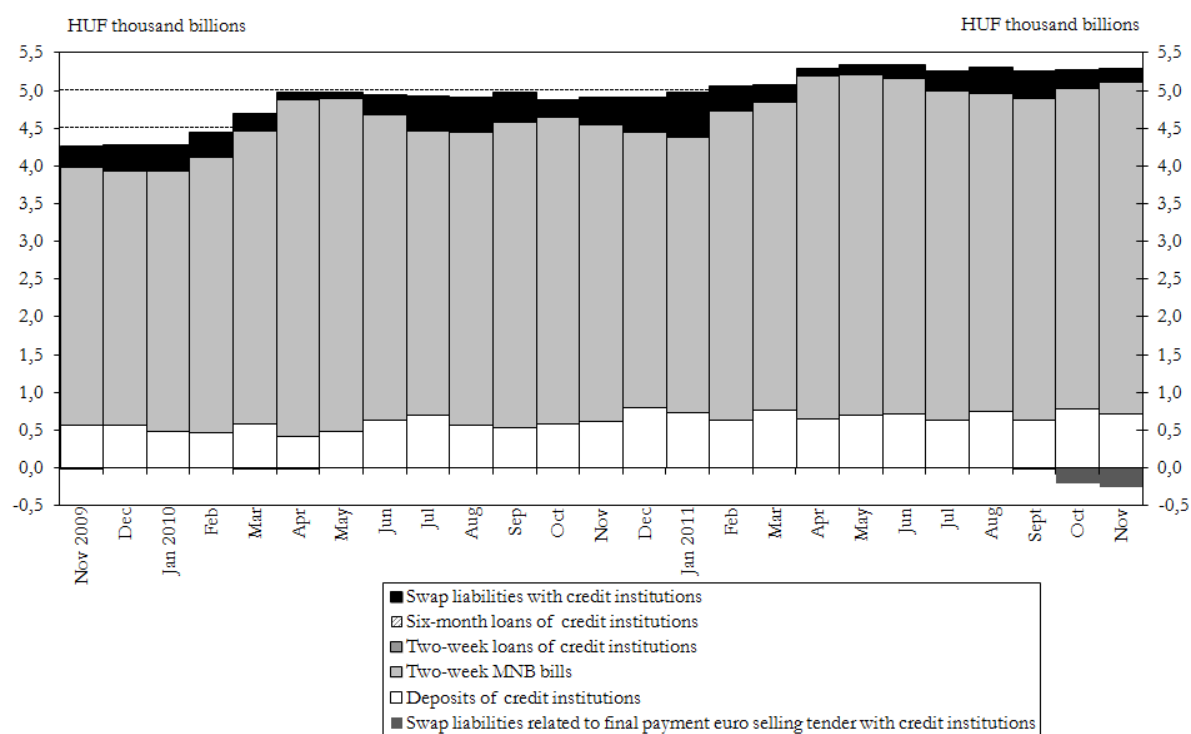


Chart 8 Recourse to selected central bank instruments - monthly average stocks⁴



⁴ Two-week forint-denominated MNB bills include the total stock in market hands (resident and non-resident holdings).

Chart 9 Assets of the MNB vis-à-vis non-residents at the end of the month

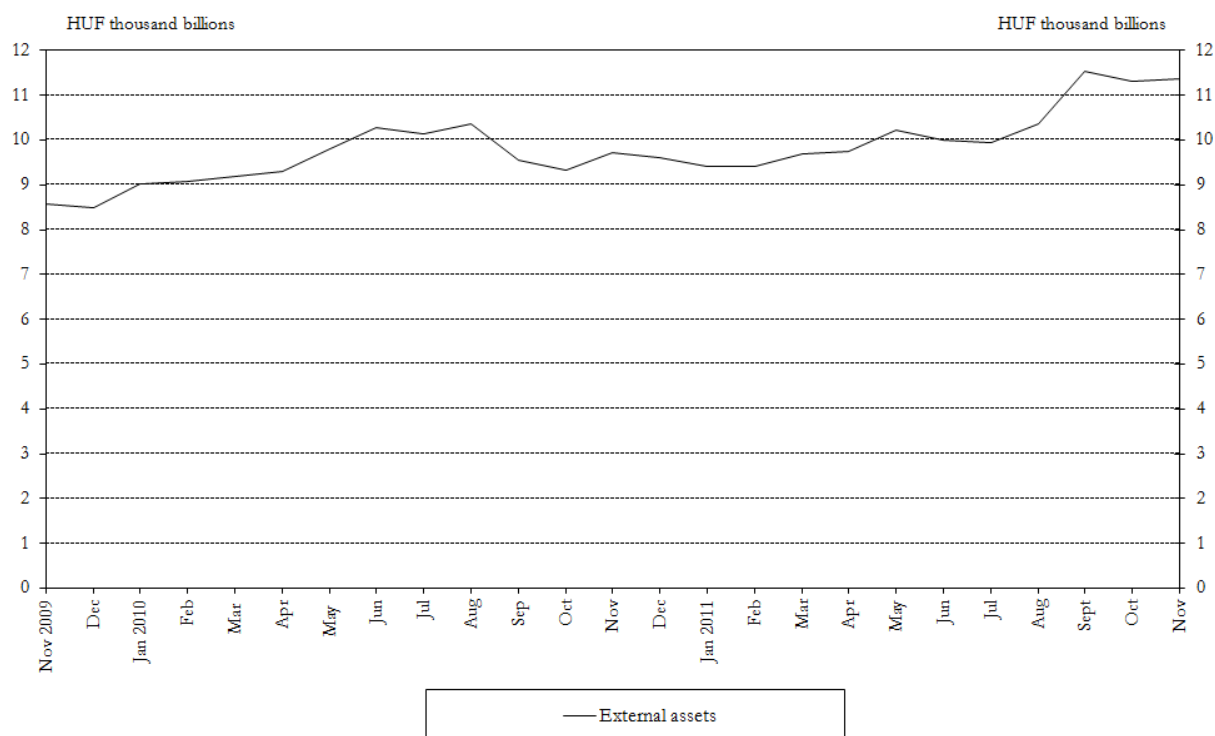
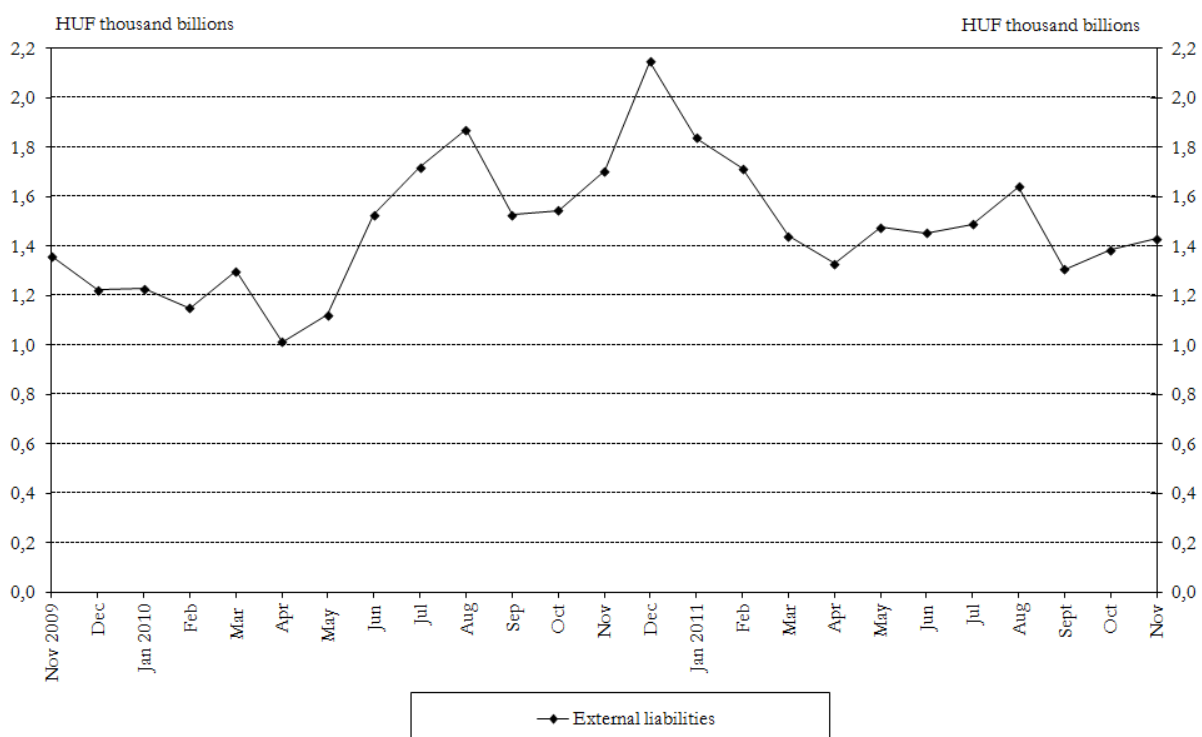


Chart 10 Liabilities of the MNB vis-à-vis non-residents at the end of the month⁵



⁵ Foreign liabilities include two-week MNB bills held by the non-resident sector.

Chart 11 Net assets of the MNB vis-à-vis non-residents at the end of the month

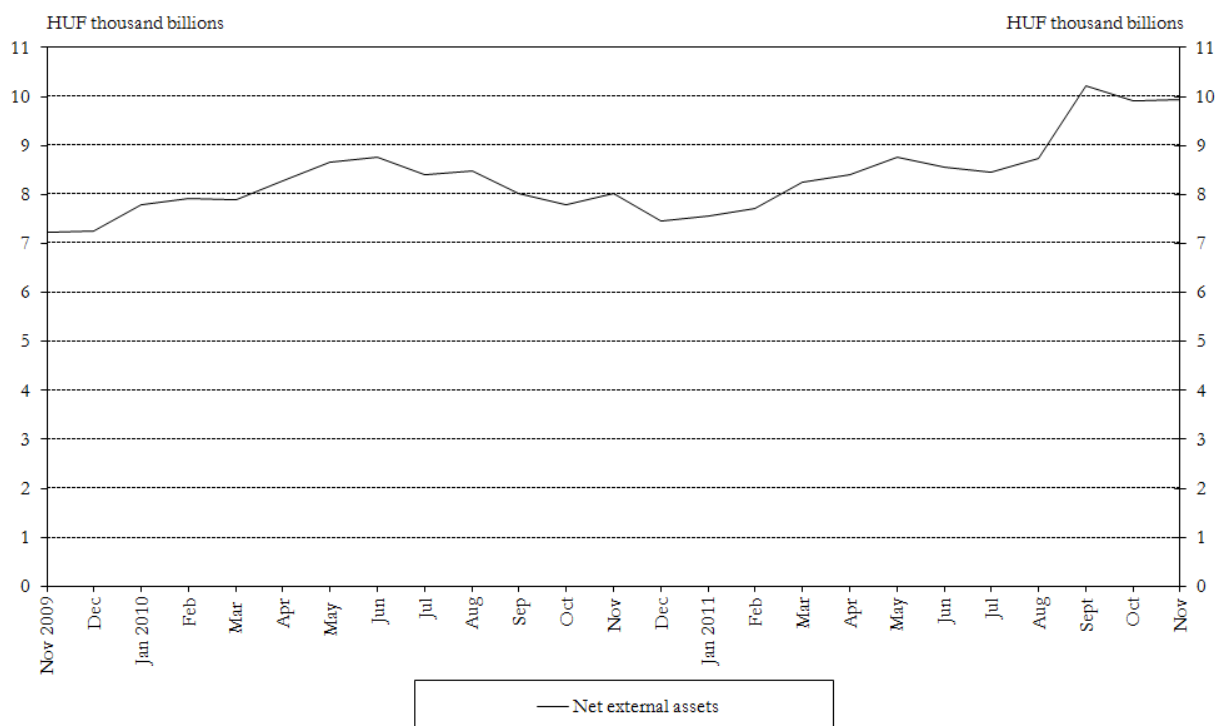


Chart 12 Central bank interest rates and average interbank overnight lending rates

