

Chart-pack to the Press Release on the preliminary statistical balance sheet of the MNB

June 2012

Chart 1 Reserve requirements of credit institutions

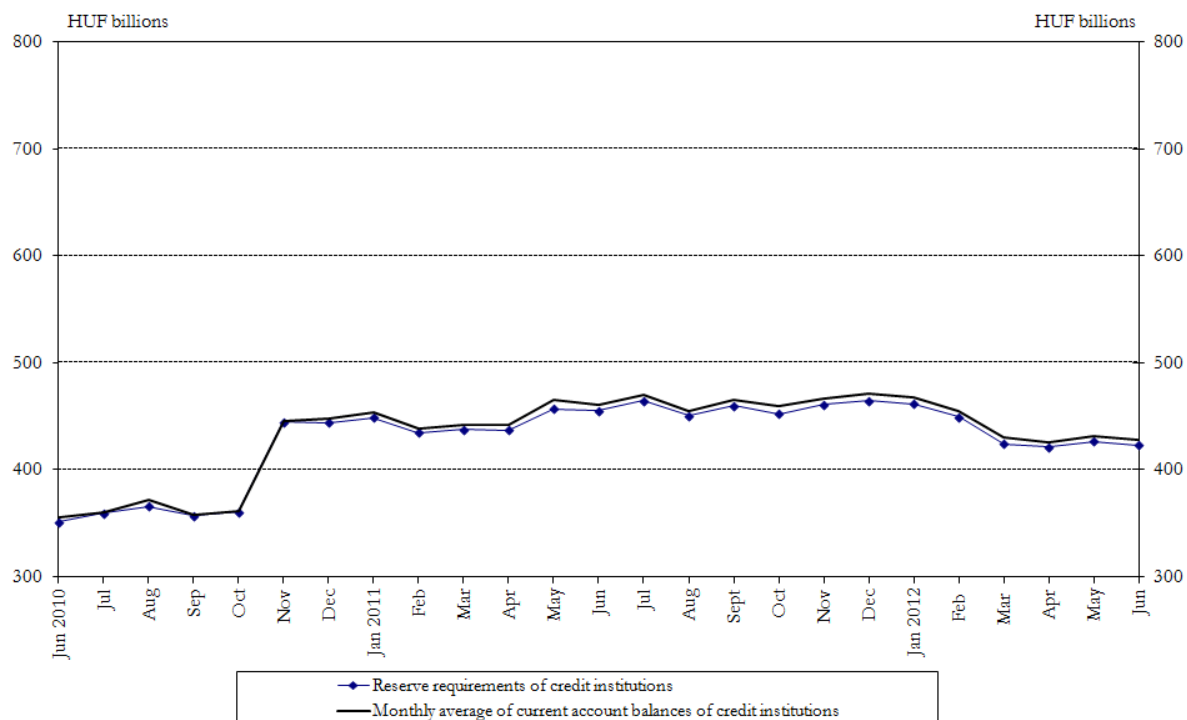


Chart 2 Reserve surpluses of credit institutions

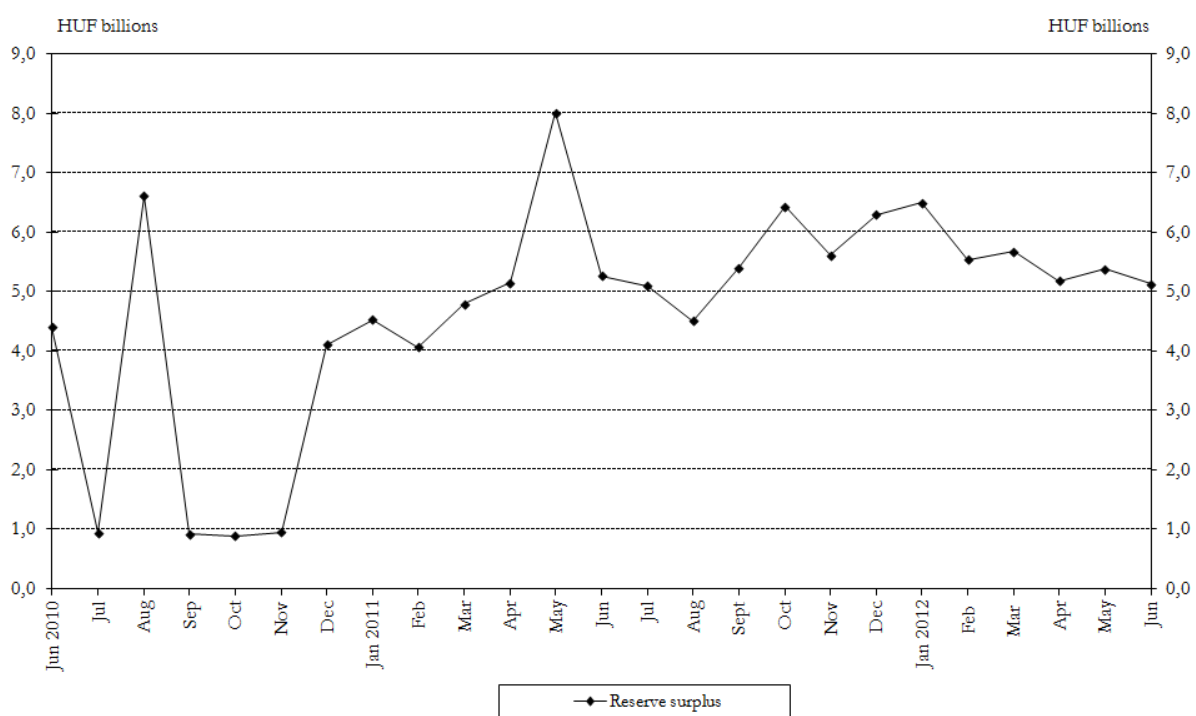


Chart 3 Components of the monetary base

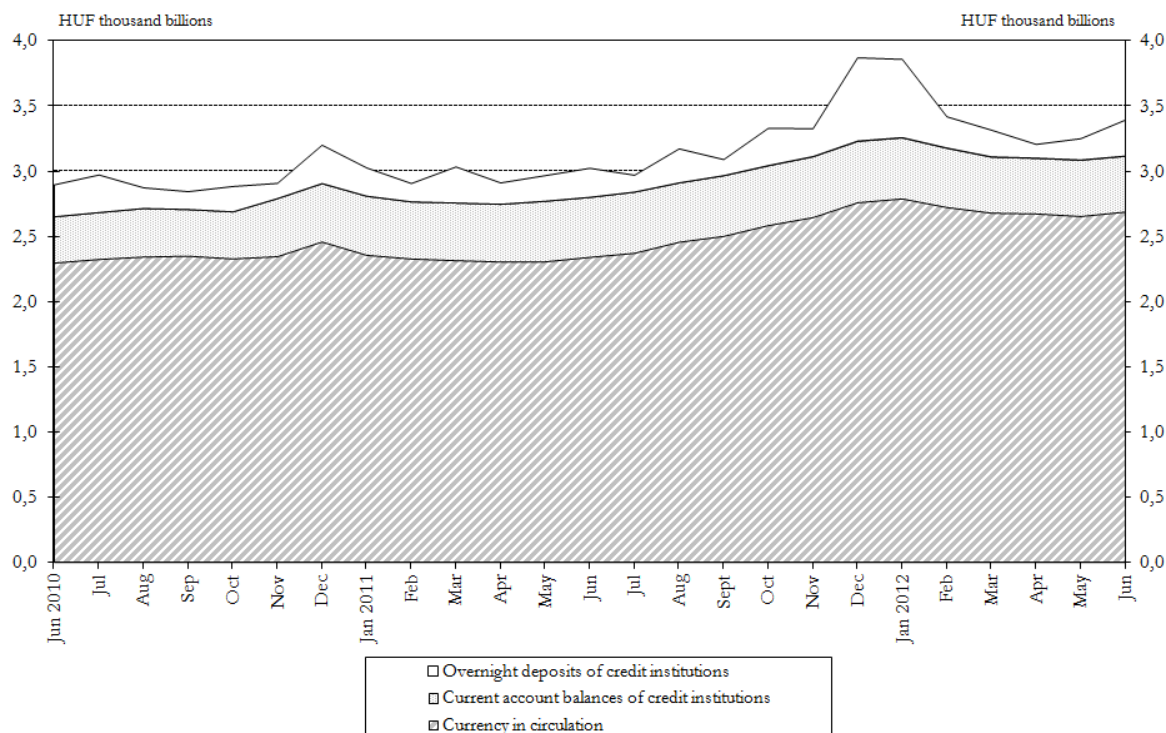
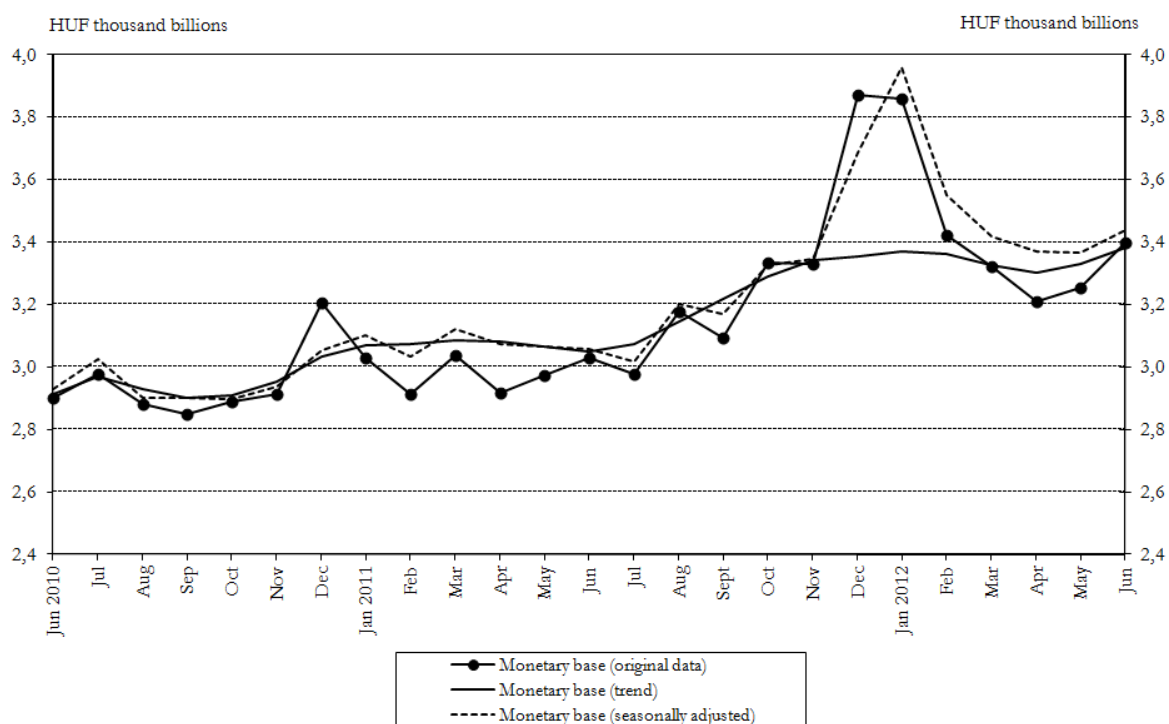


Chart 4 Changes in the monetary base^{1, 2}



¹ See the Methodological notes.

² During seasonal adjustment of the monetary base, the trend data for February 2012 are subject to uncertainty, due to the significant change in the time series for the components of the monetary base (the stock of credit institutions' overnight deposits).

Chart 5 Monthly average stocks of currency in circulation³

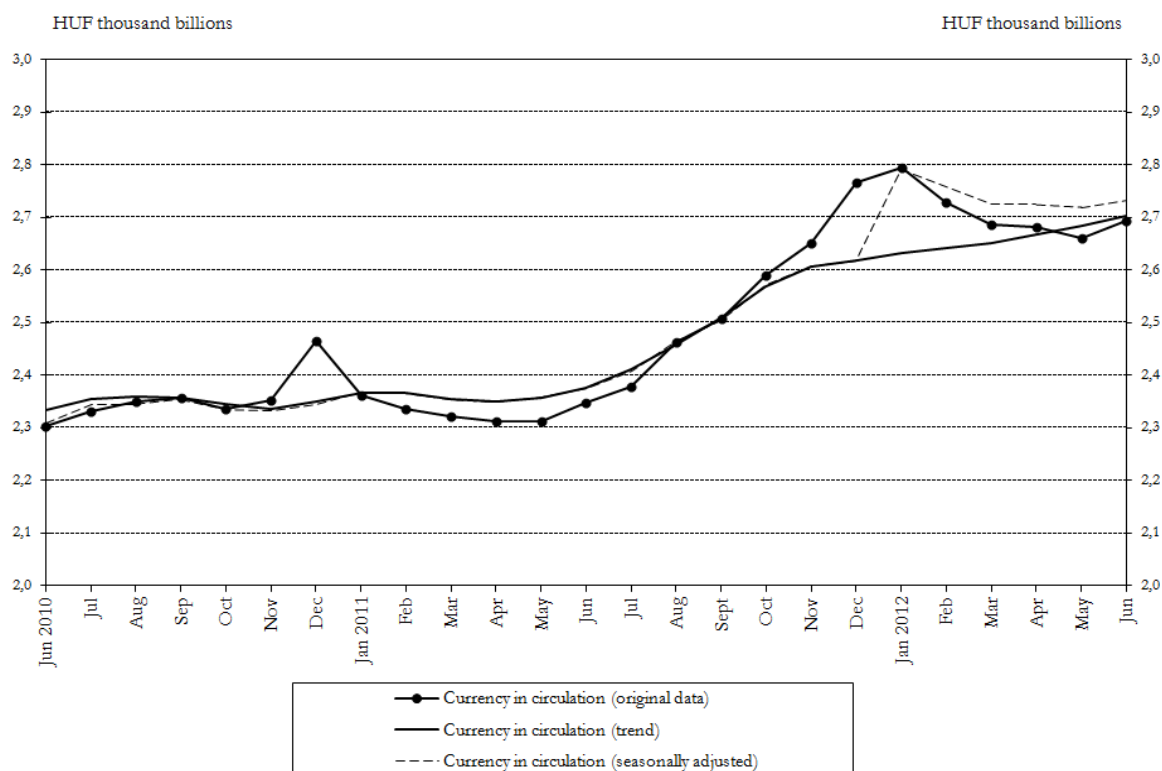
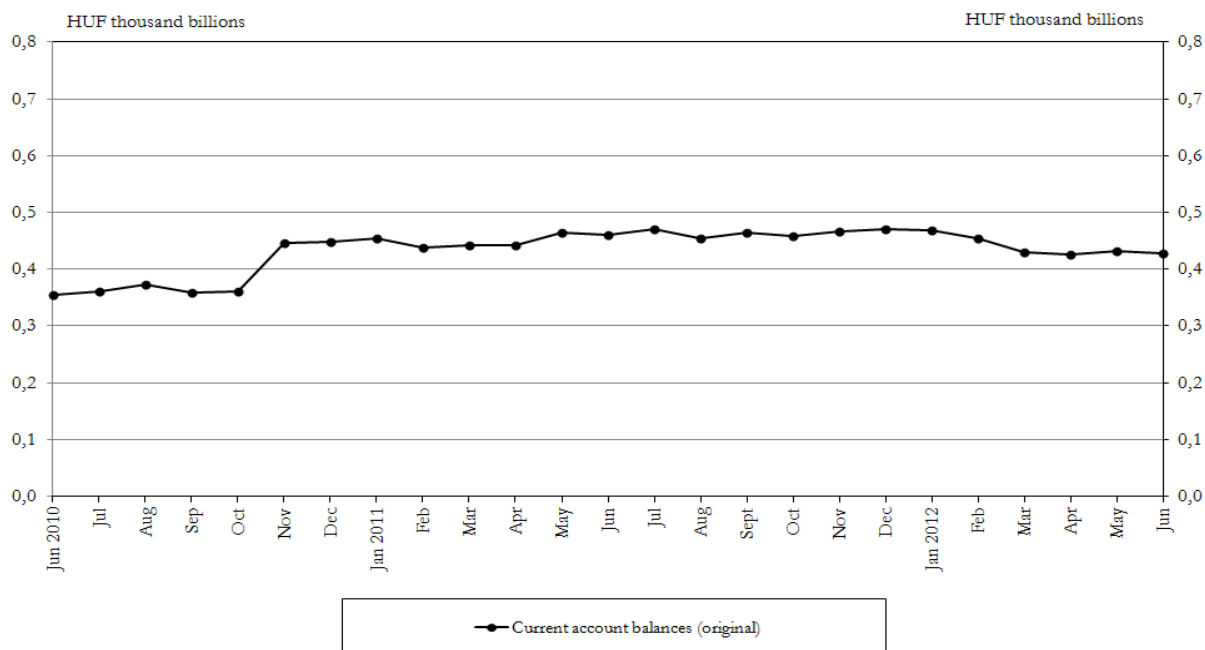


Chart 6 Monthly average of credit institutions' current account balances^{4, 5}



³ In seasonally adjusting the monthly stock of currency in circulation, the trend data for January 2012 contain more uncertainty than usual, due to the large changes in the time series.

⁴ See the Methodological notes.

⁵ Seasonal adjustment did not produce a meaningful result, due to the considerable change in the behaviour of the time series from November 2010 as a result of the transition to the flexible reserve maintenance scheme. Consequently, the seasonally adjusted and trend data are not published.

Chart 7 Monthly average of credit institutions' overnight deposits

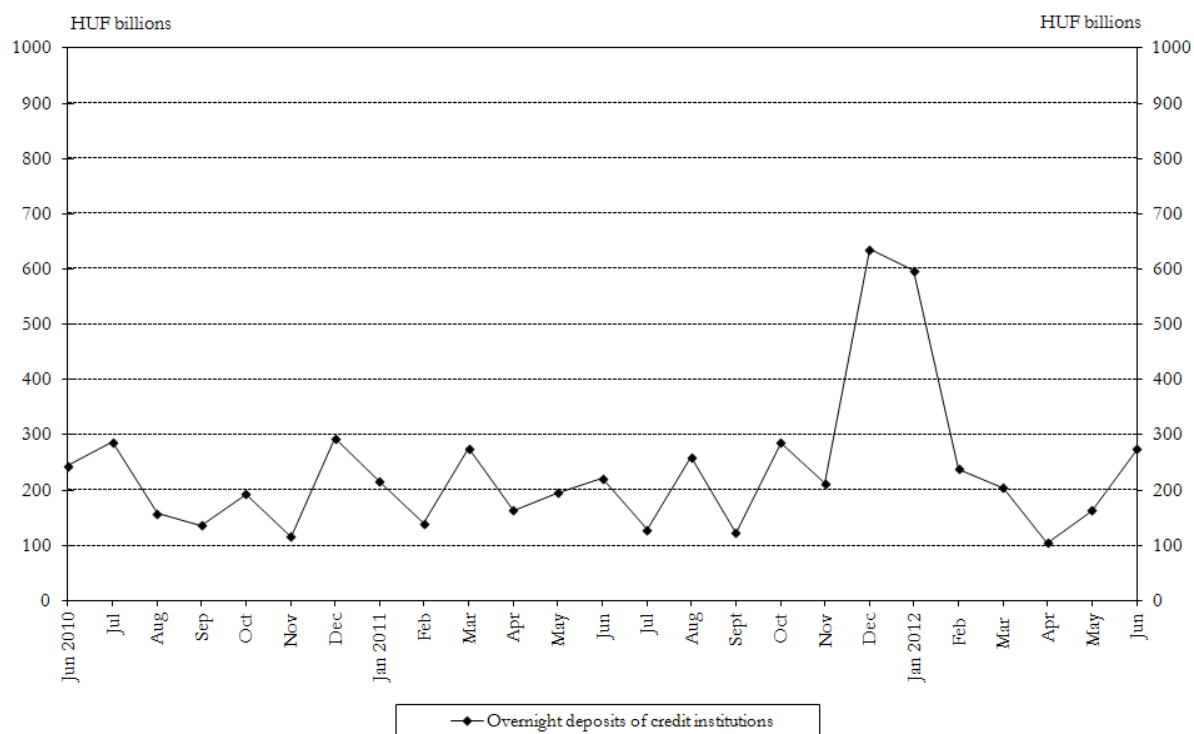
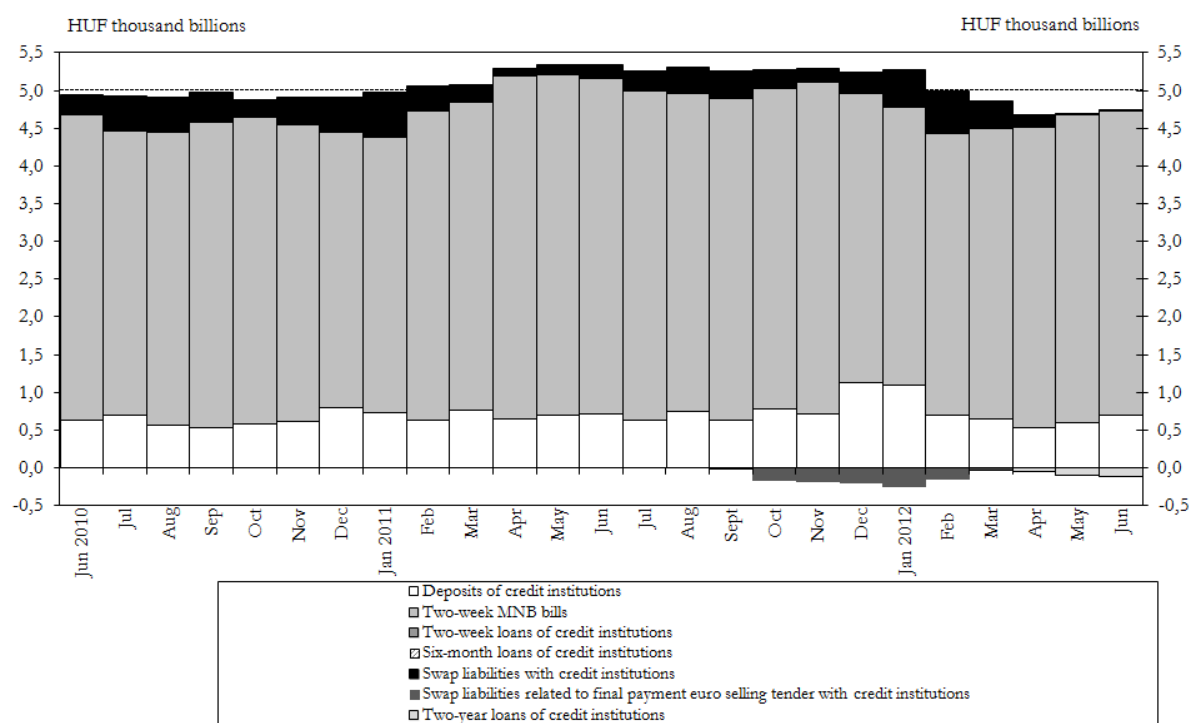


Chart 8 Recourse to selected central bank instruments - monthly average stocks⁶



⁶ Two-week forint-denominated MNB bills include the total stock in market hands (resident and non-resident holdings).

Chart 9 External assets of the MNB at the end of the month

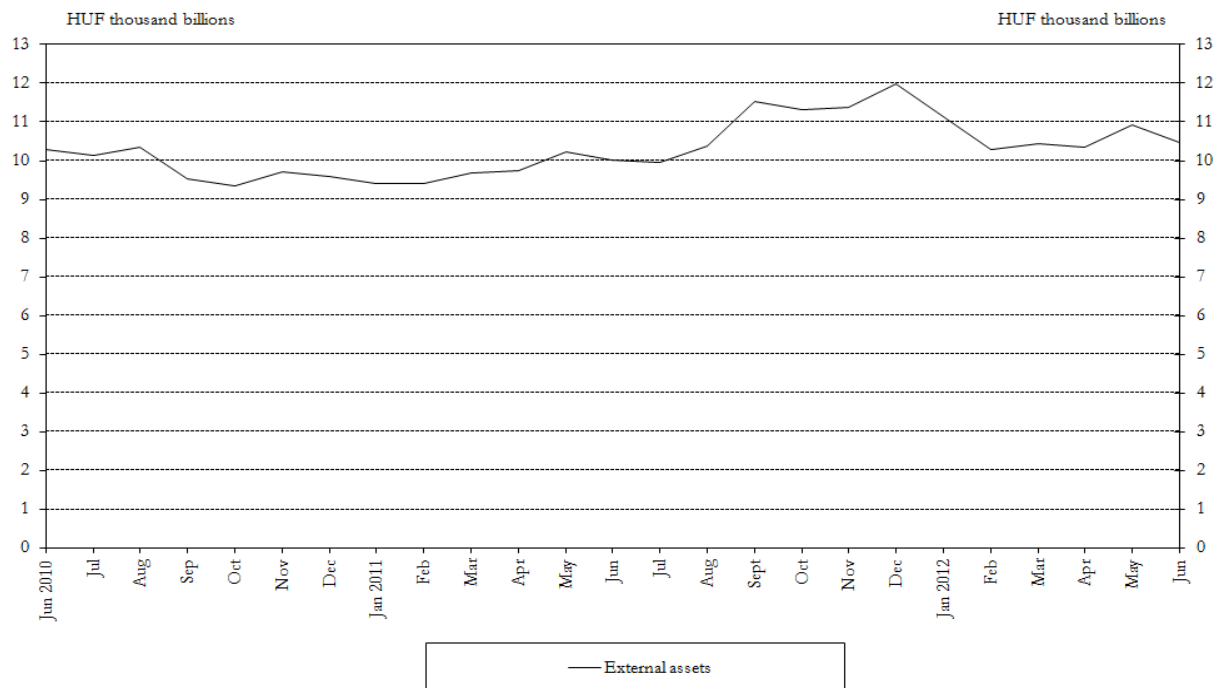
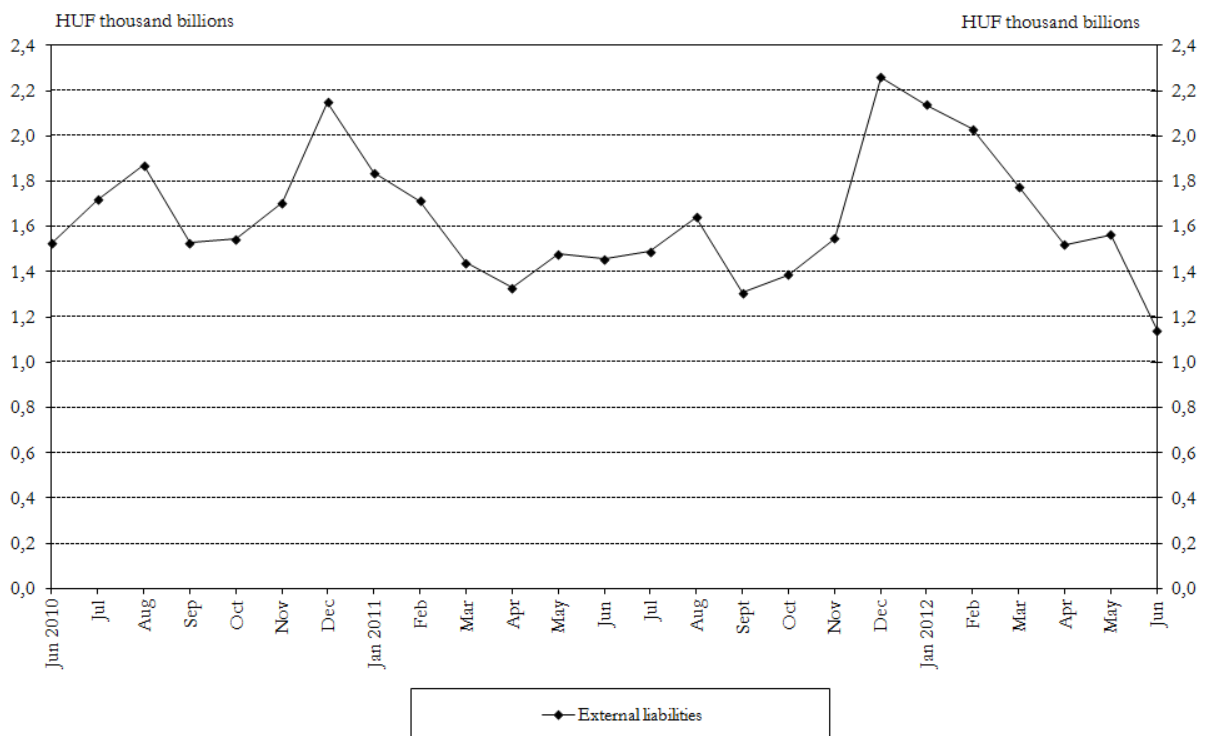


Chart 10 External liabilities of the MNB at the end of the month⁷



⁷ Foreign liabilities include two-week MNB bills held by the non-resident sector. The breakdown of holders of two-week MNB bills by residents and non-residents has been determined on the basis of securities accounts. For more information, see the Methodological notes.

Chart 11 Net external assets of the MNB at the end of the month

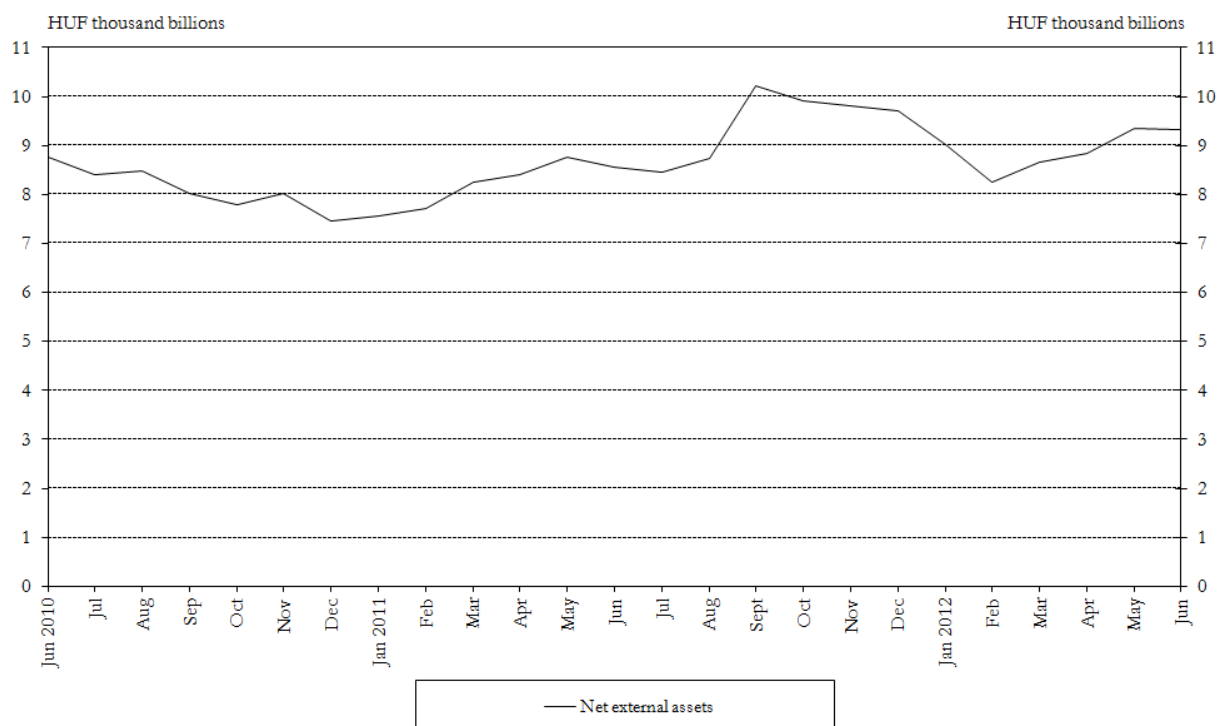


Chart 12 Central bank interest rates and average interbank overnight lending rates

