

Chart-pack to the Press Release on the preliminary statistical balance sheet of the MNB, January 2017

Chart 1 Reserve requirements of credit institutions¹

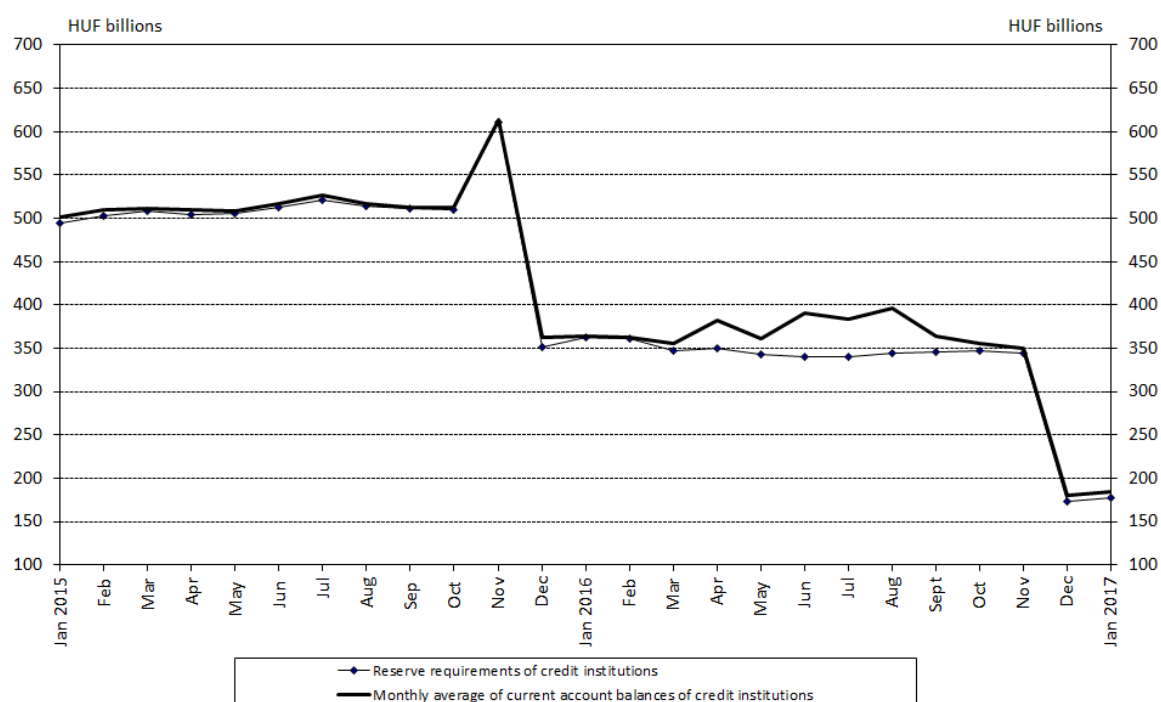
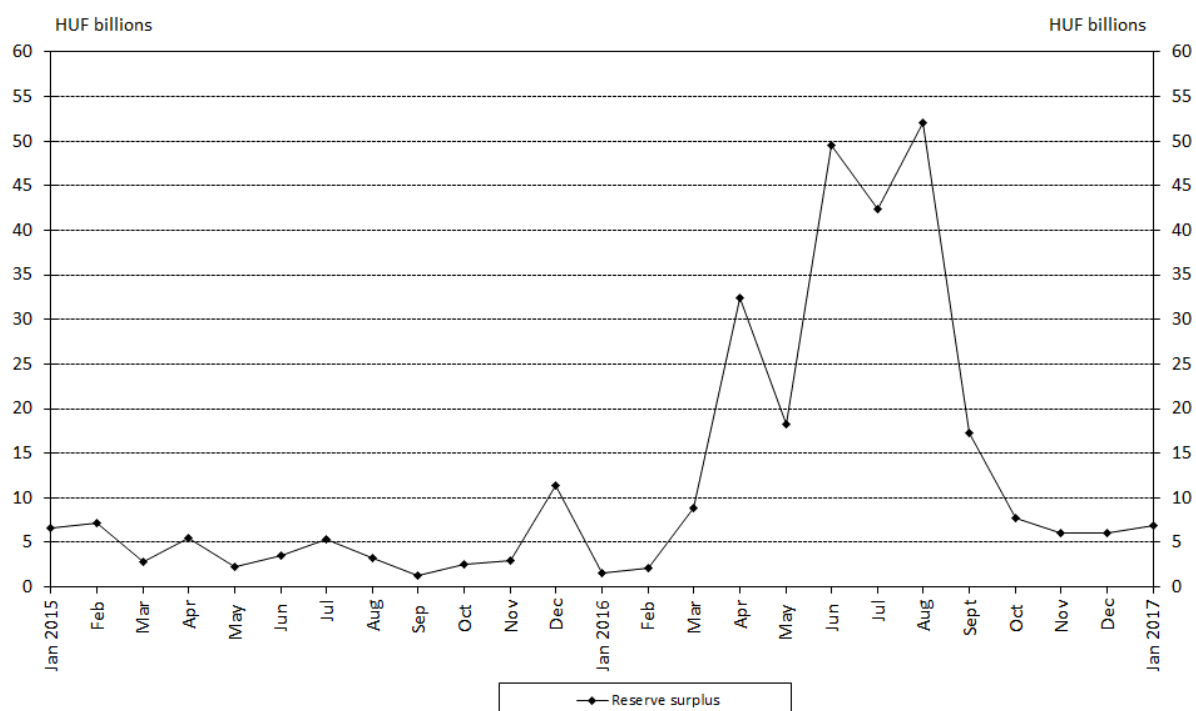


Chart 2 Reserve surpluses of credit institutions



¹ Prior to 1 December 2015, credit institutions had the opportunity to choose, at most semi-annually, different reserve ratios (2%, 3% or 5%). However, MNB Decree 46/2015. (XI.11.), in effect from 1 December 2015, requires credit institutions to hold reserves at a fixed, uniform ratio of 2 per cent, replacing the flexible reserve requirement system.

Chart 3 Components of the monetary base

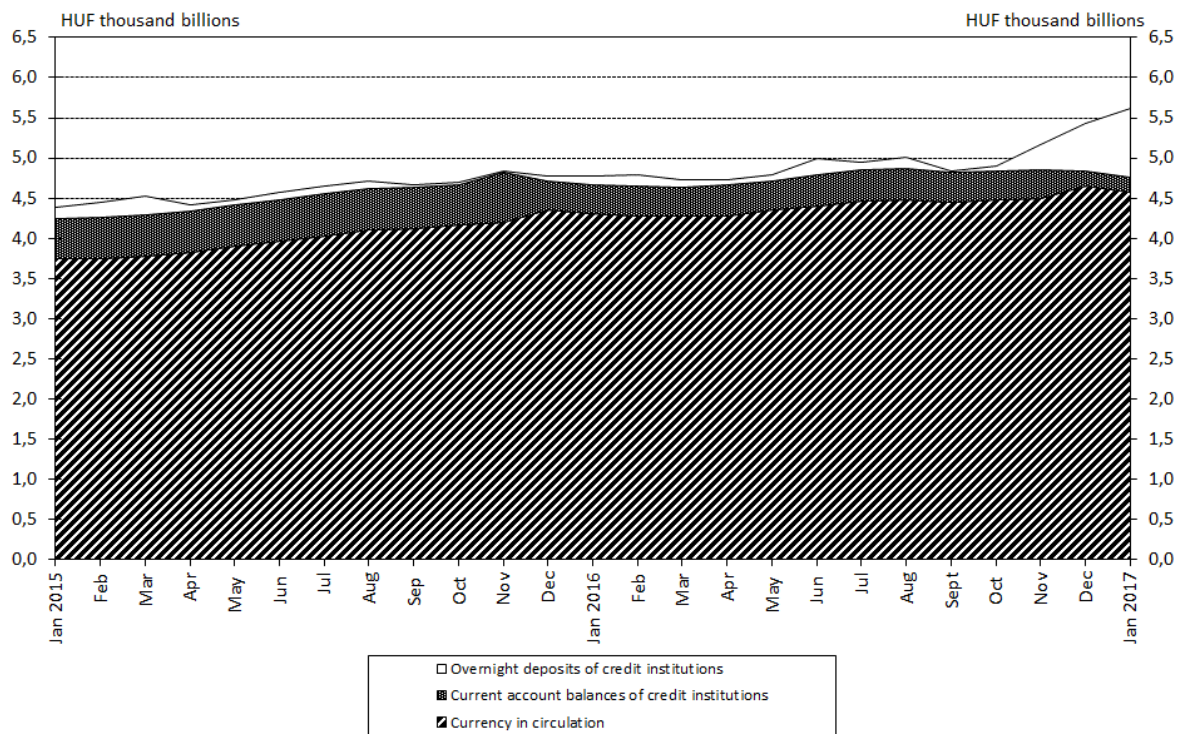
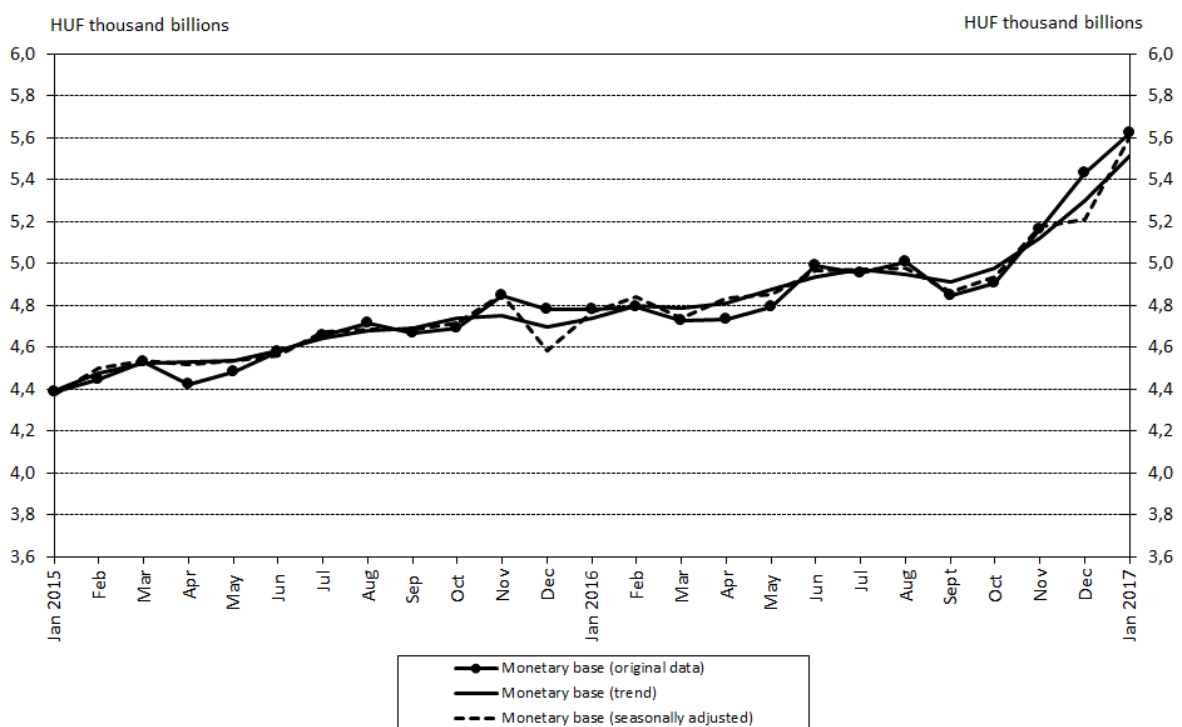


Chart 4 Changes in the monetary base^{2,3}



² See the Methodological notes.

³ Beginning with the release of January 2017 data, the MNB has migrated uniformly from the tool Demetra to the JDemetra+ software in producing seasonally adjusted data.

Chart 5 Monthly average stocks of currency in circulation⁴

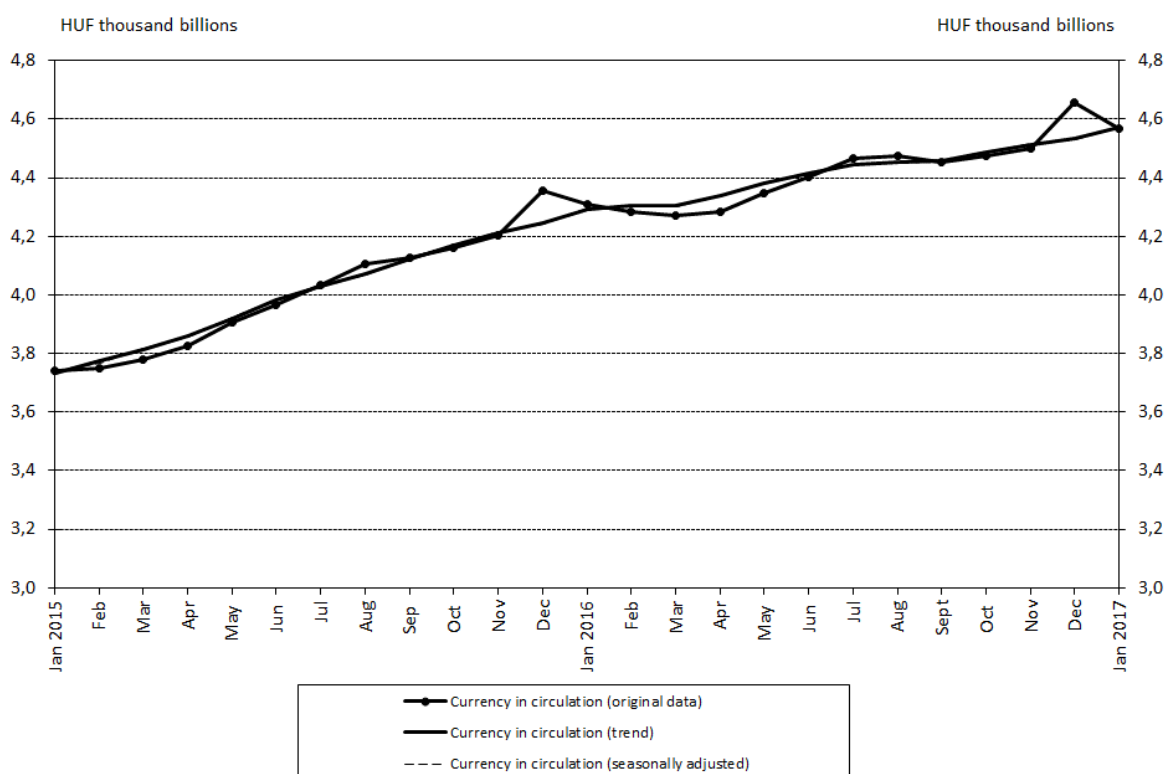
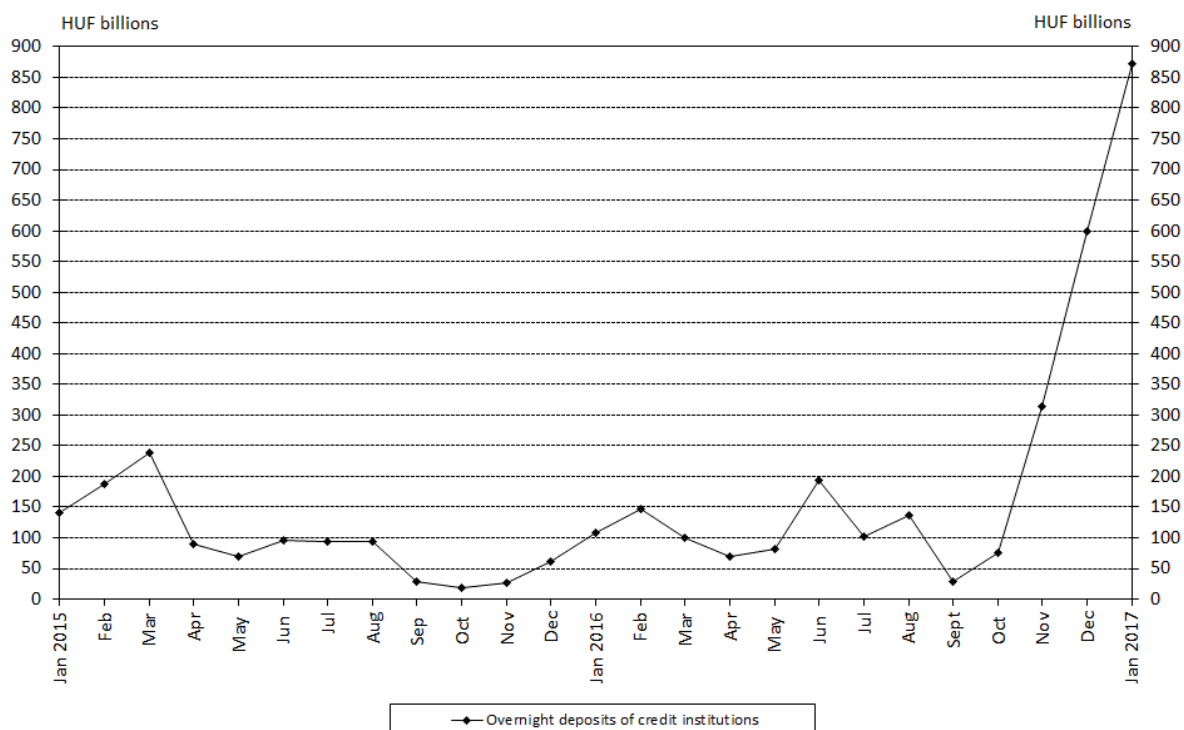


Chart 6 Monthly average of credit institutions' overnight deposits



⁴ Beginning with the release of January 2017 data, the MNB has migrated uniformly from the tool Demetra to the JDemetra+ software in producing seasonally adjusted data.

Chart 7 Recourse to selected central bank instruments – monthly average stocks

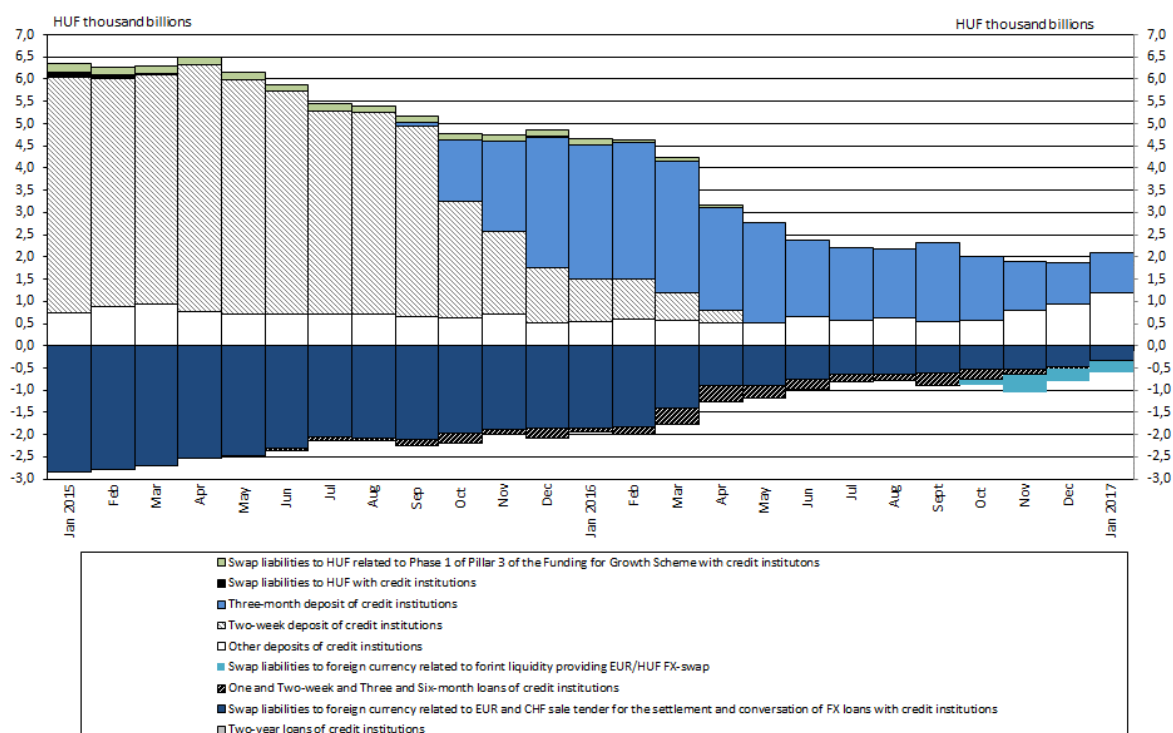


Chart 8 External assets of the MNB at the end of the month

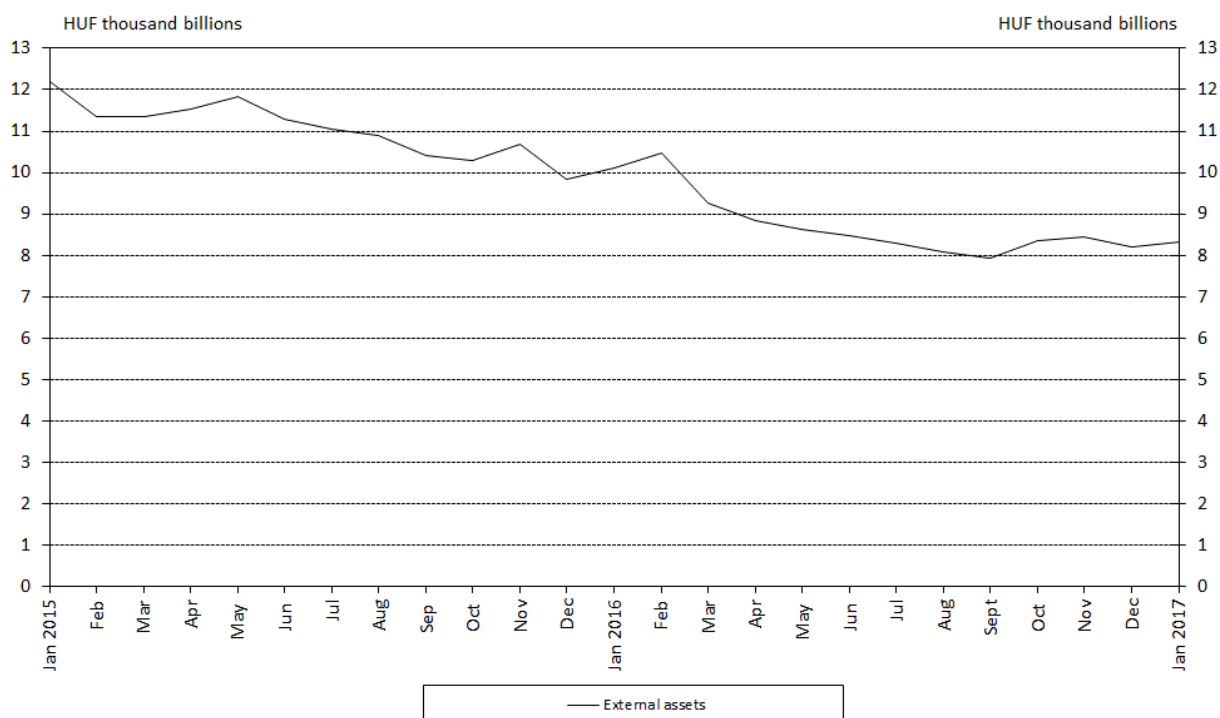


Chart 9 External liabilities of the MNB at the end of the month

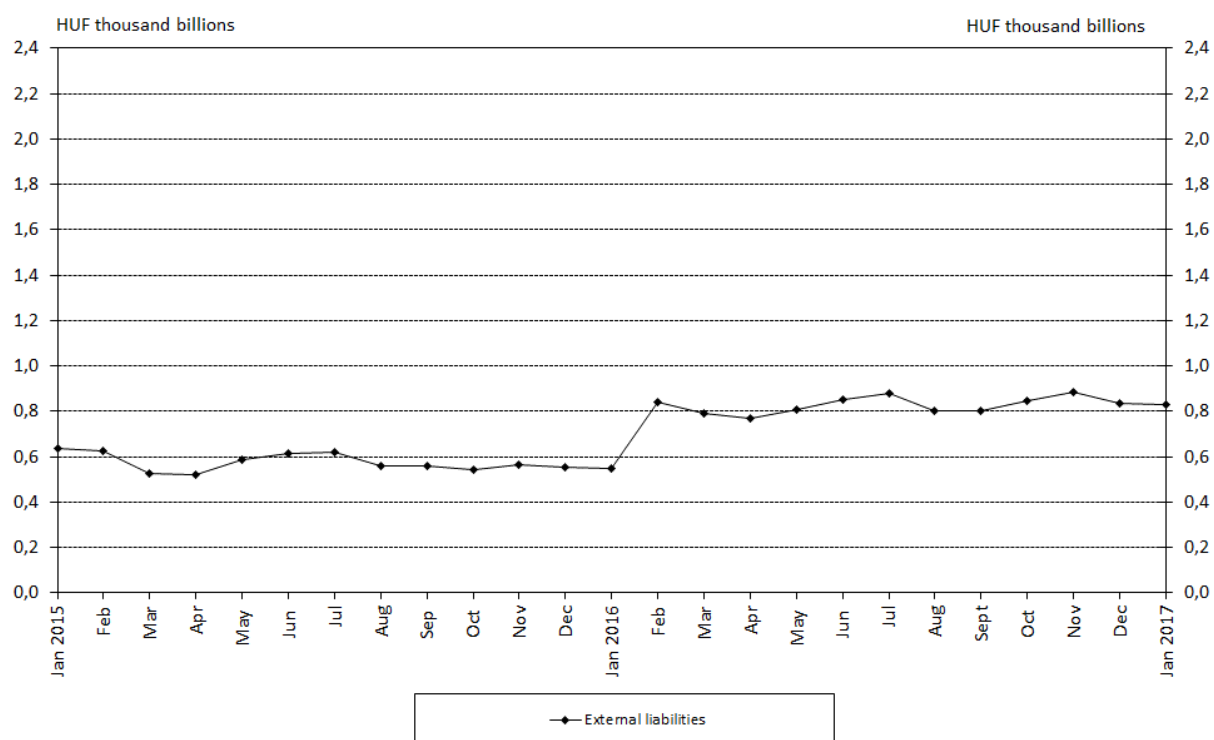


Chart 10 Net external assets of the MNB at the end of the month

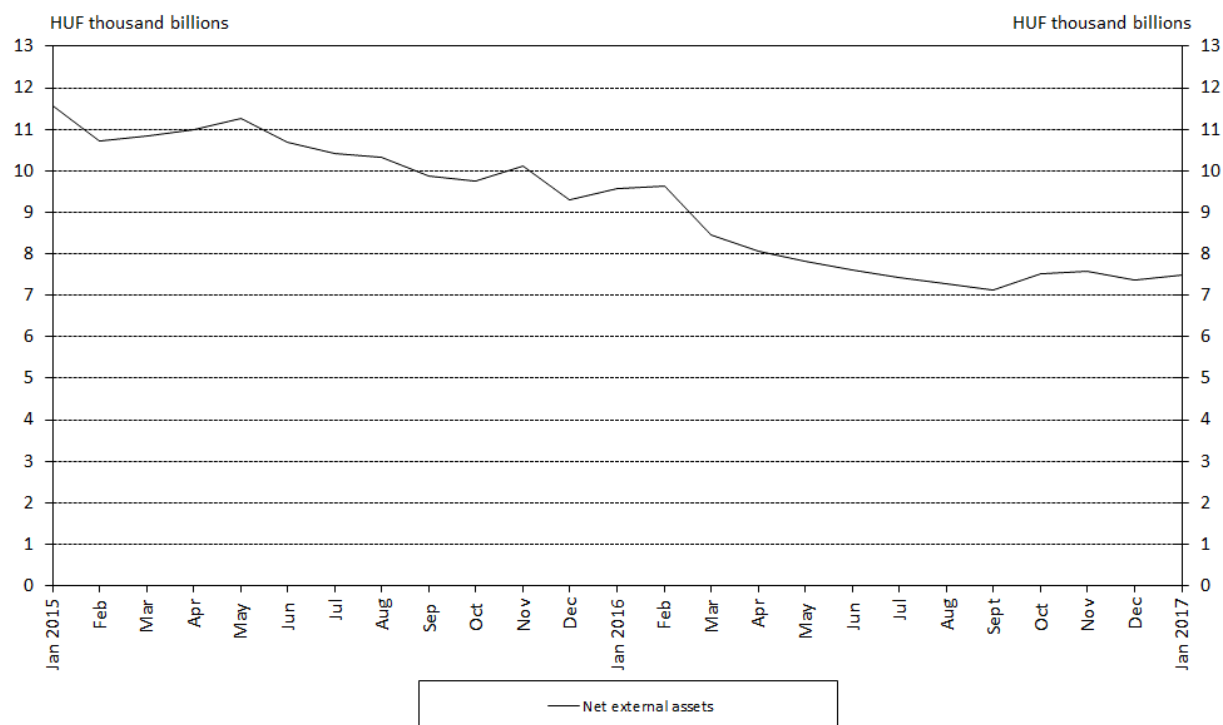


Chart 11 Central bank interest rates and average interbank overnight lending rates

