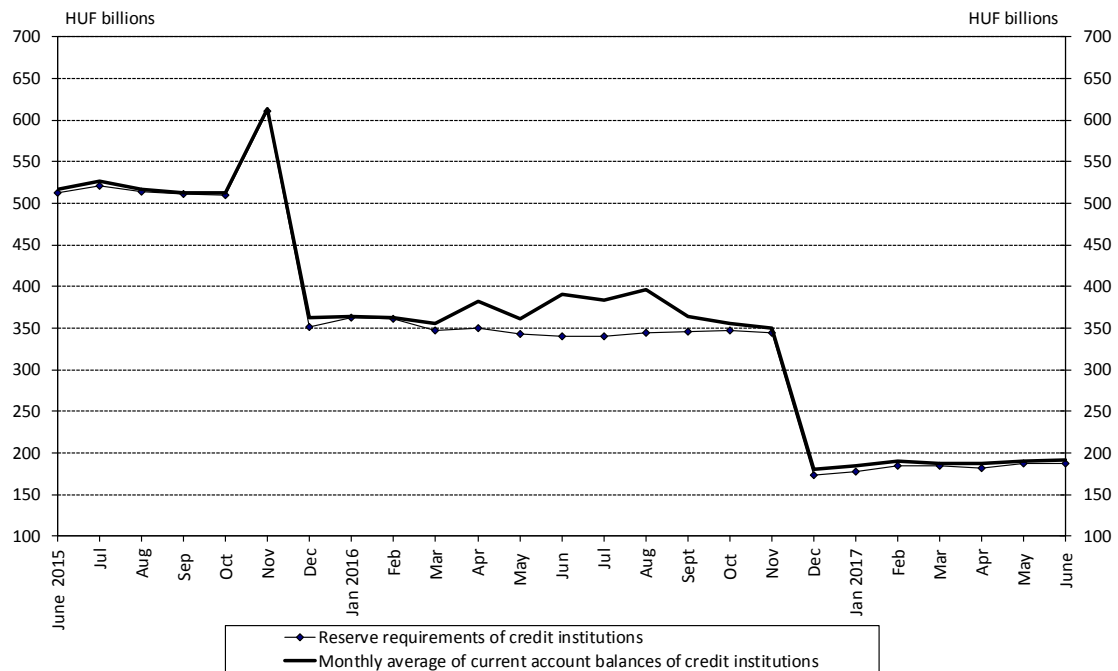
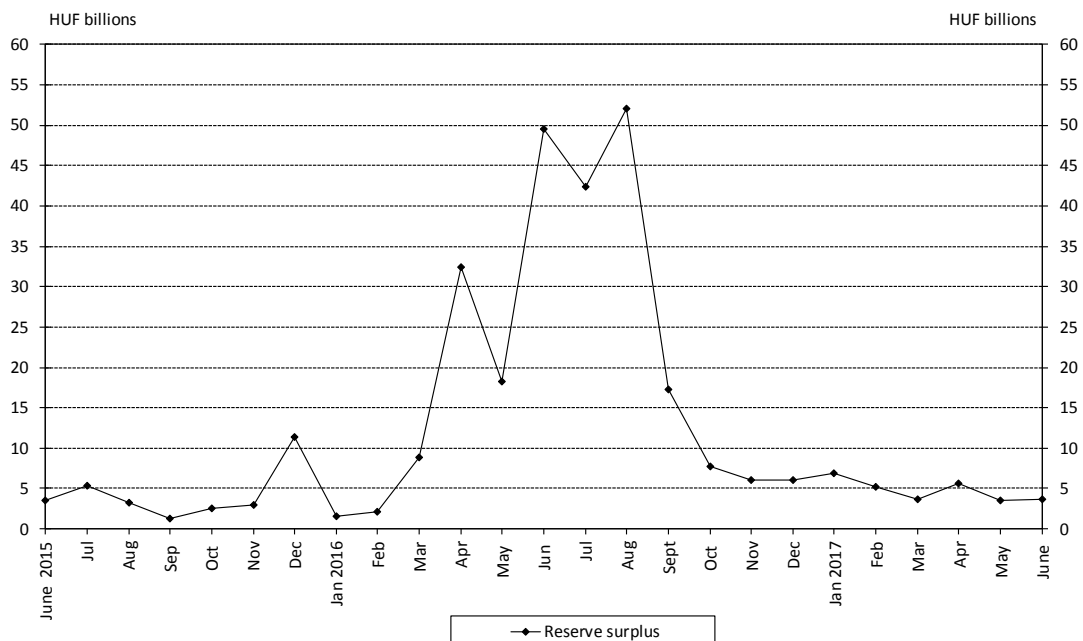


## Chart-pack to the Press Release on the preliminary statistical balance sheet of the MNB, June 2017

**Chart 1 Reserve requirements of credit institutions<sup>1</sup>**

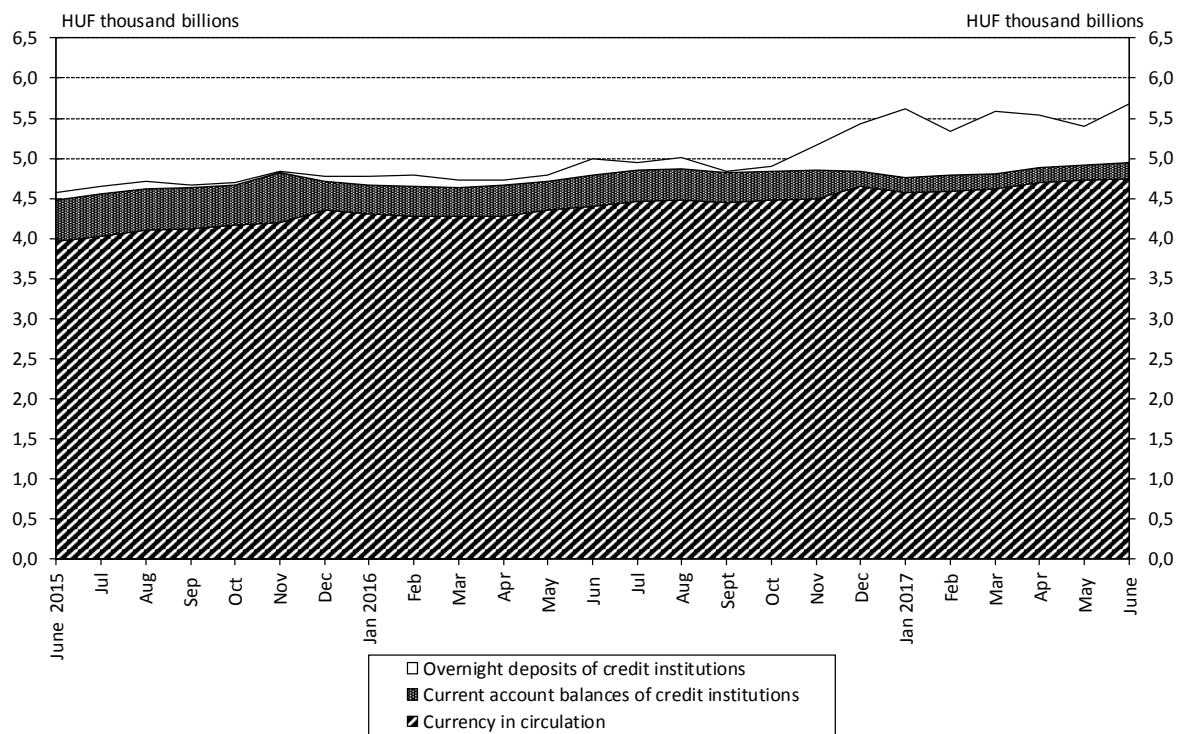


**Chart 2 Reserve surpluses of credit institutions**

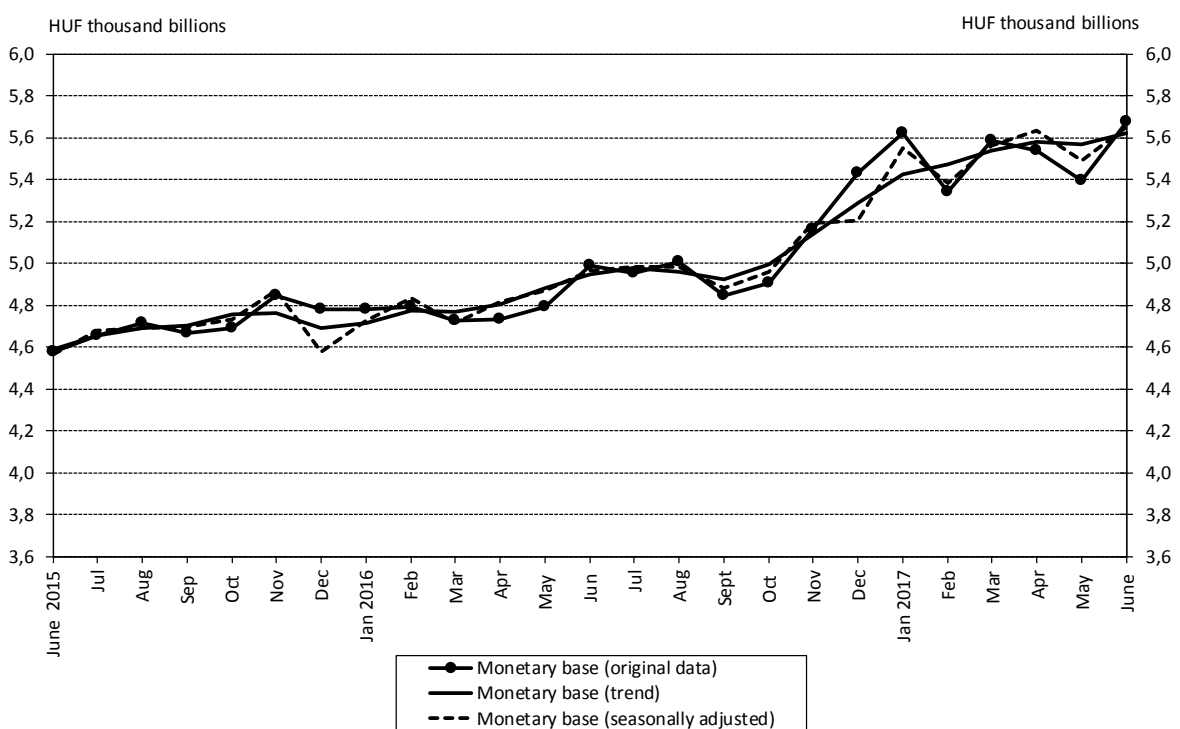


<sup>1</sup> Prior to 1 December 2015, credit institutions had the opportunity to choose, at most semi-annually, different reserve ratios (2%, 3% or 5%). However, MNB Decree 46/2015. (XI.11.), in effect from 1 December 2015, requires credit institutions to hold reserves at a fixed, uniform ratio of 2 per cent, replacing the flexible reserve requirement system. MNB regulation 45/2016 (23. XI.) that entered into effect on 1 December 2016, prescribes a fixed required reserve ratio of 1 per cent, uniformly applicable to all financial institutions, as of 1 December 2016.

**Chart 3 Components of the monetary base**

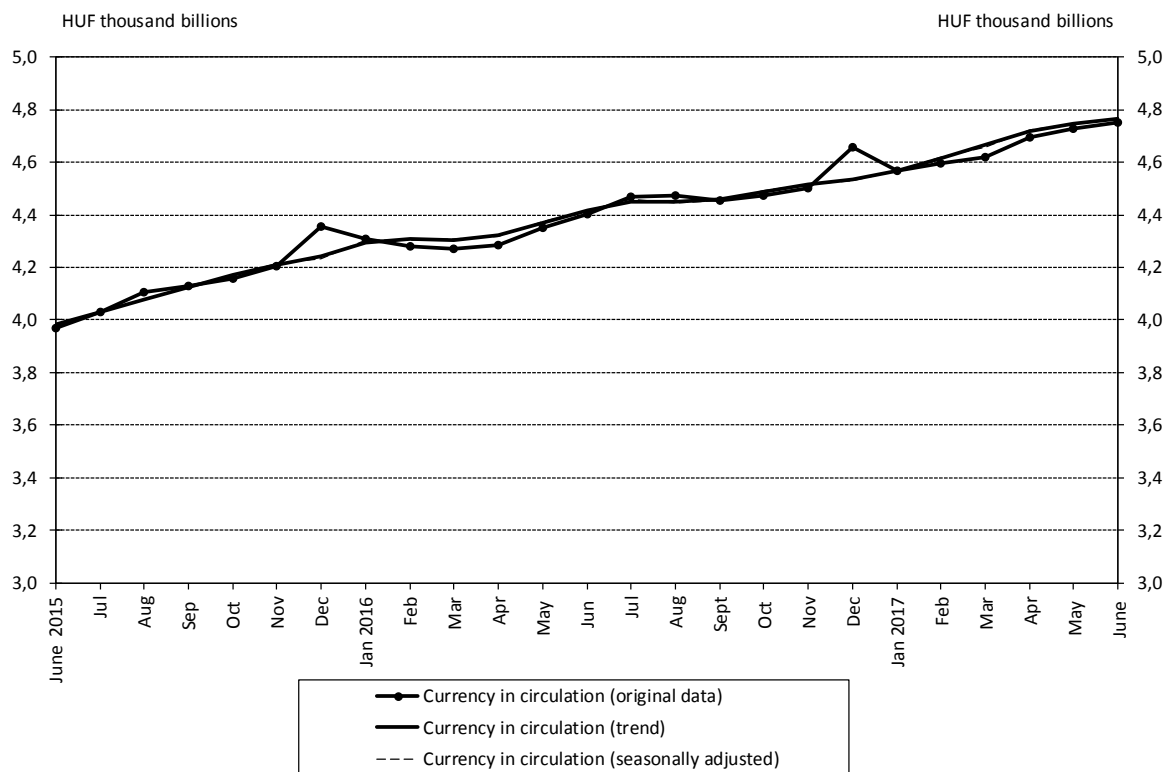


**Chart 4 Changes in the monetary base<sup>2</sup>**

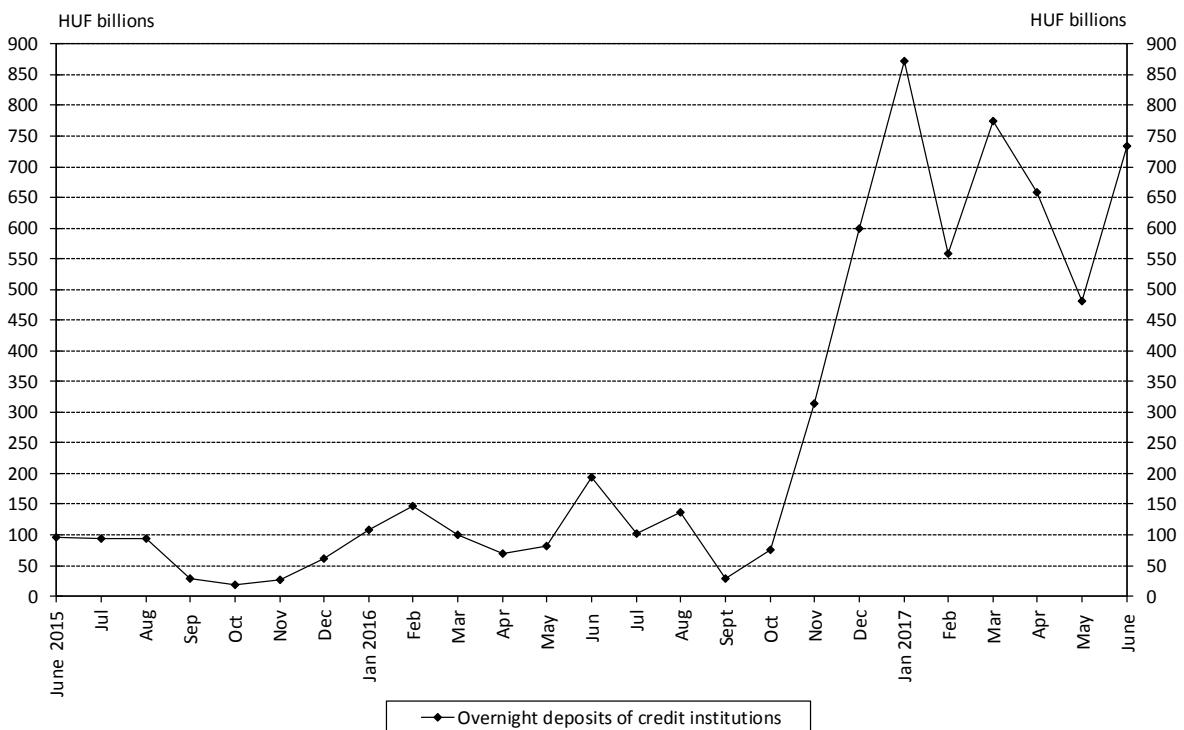


<sup>2</sup> See the Methodological notes.

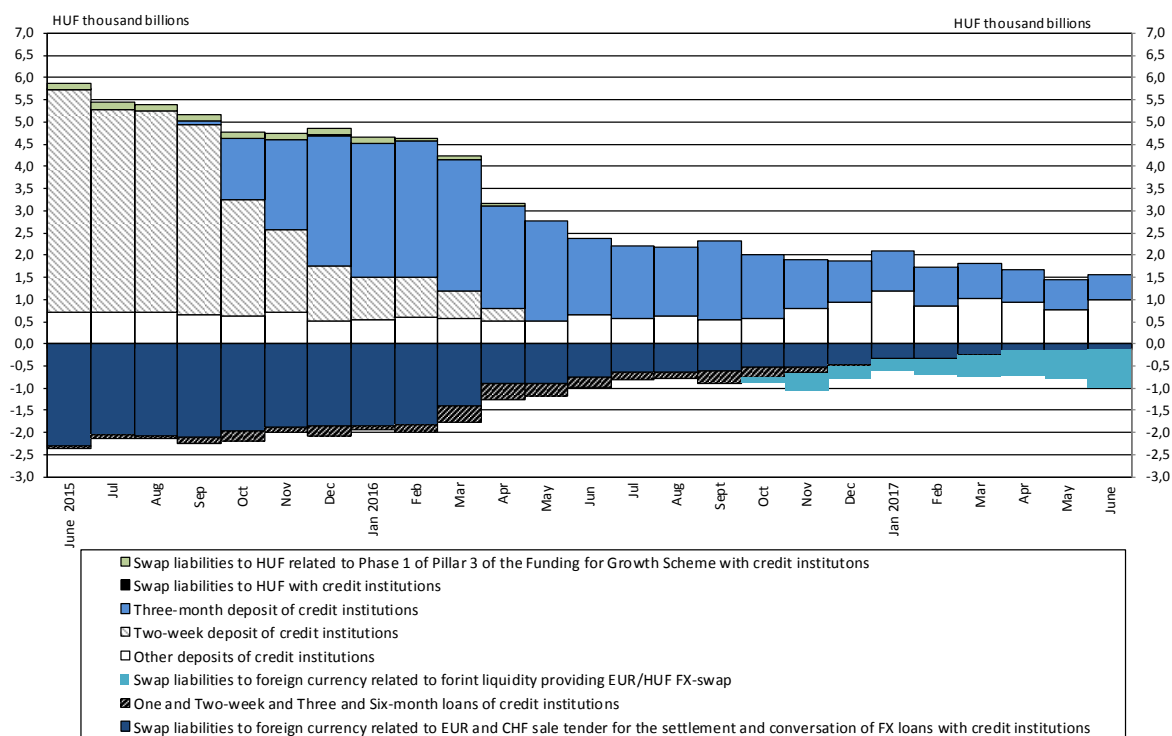
**Chart 5 Monthly average stocks of currency in circulation**



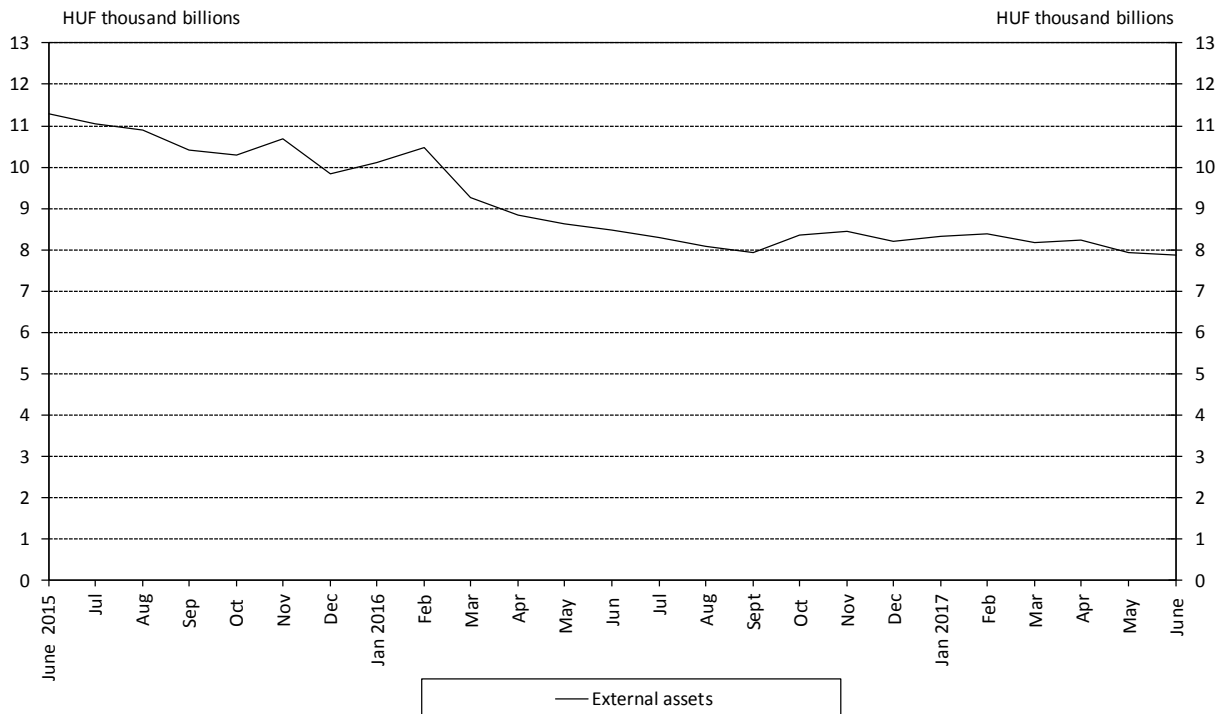
**Chart 6 Monthly average of credit institutions' overnight deposits**



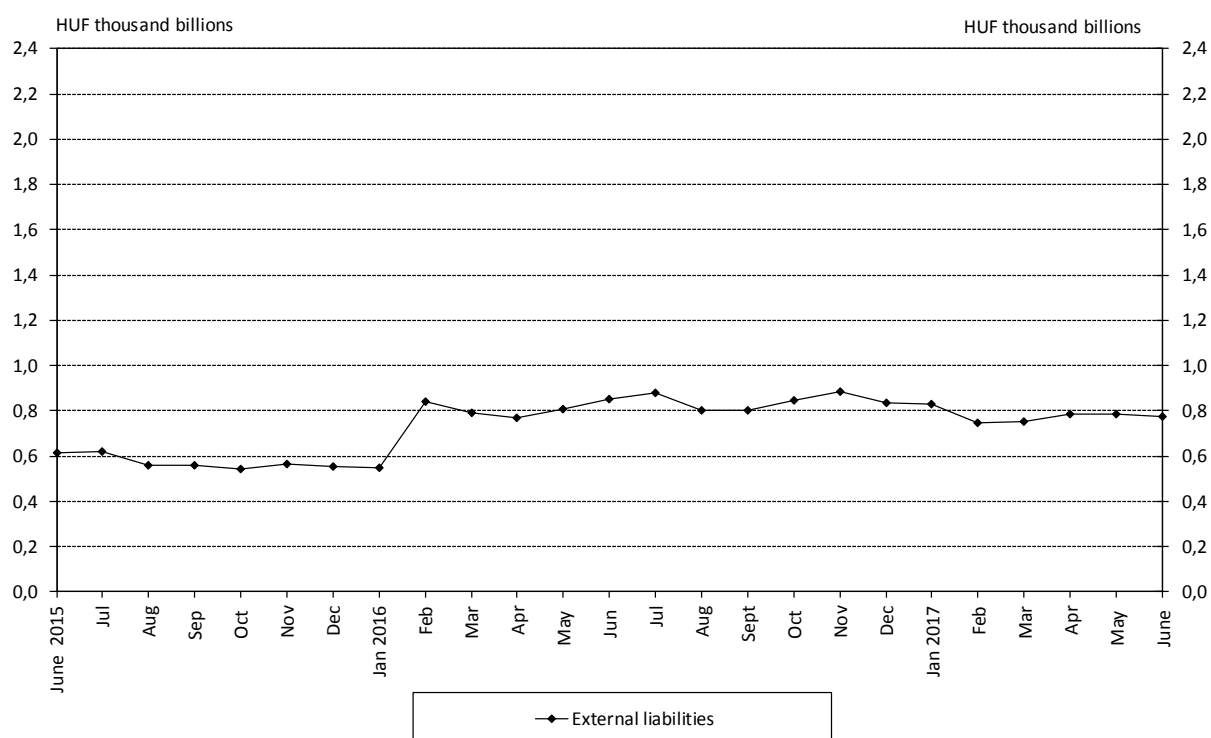
**Chart 7 Recourse to selected central bank instruments – monthly average stocks**



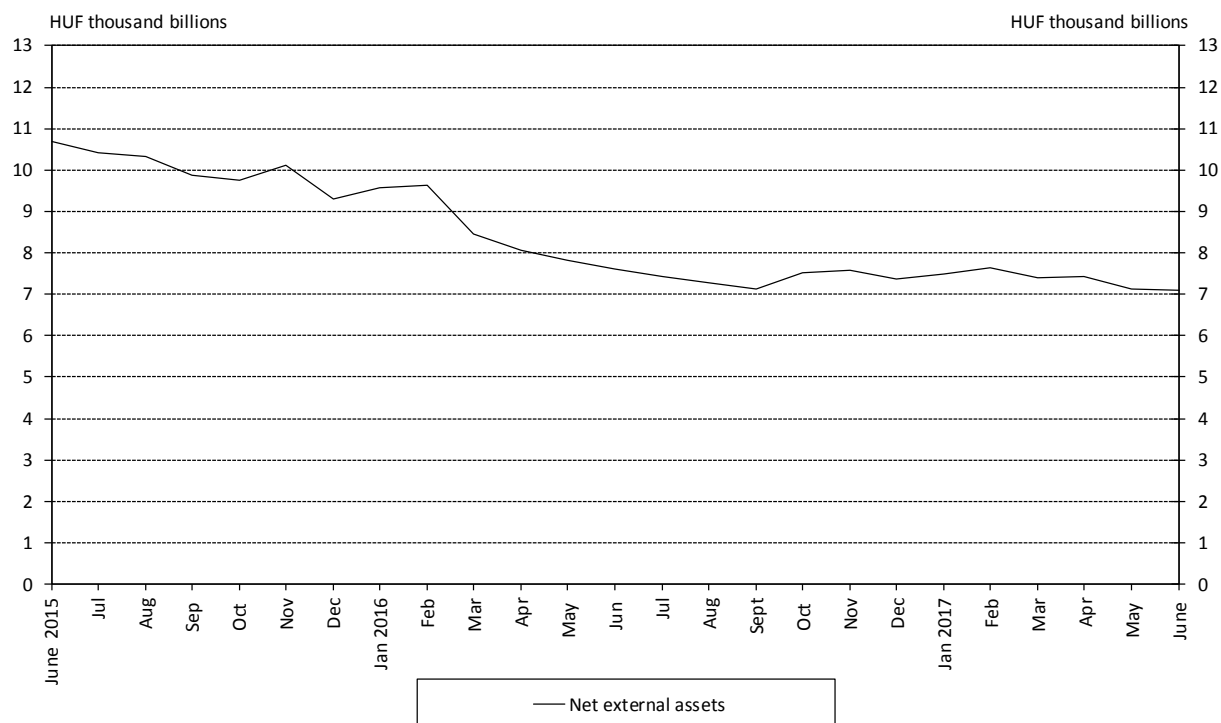
**Chart 8 External assets of the MNB at the end of the month**



**Chart 9 External liabilities of the MNB at the end of the month**



**Chart 10 Net external assets of the MNB at the end of the month**



**Chart 11 Central bank interest rates and average interbank overnight lending rates**

