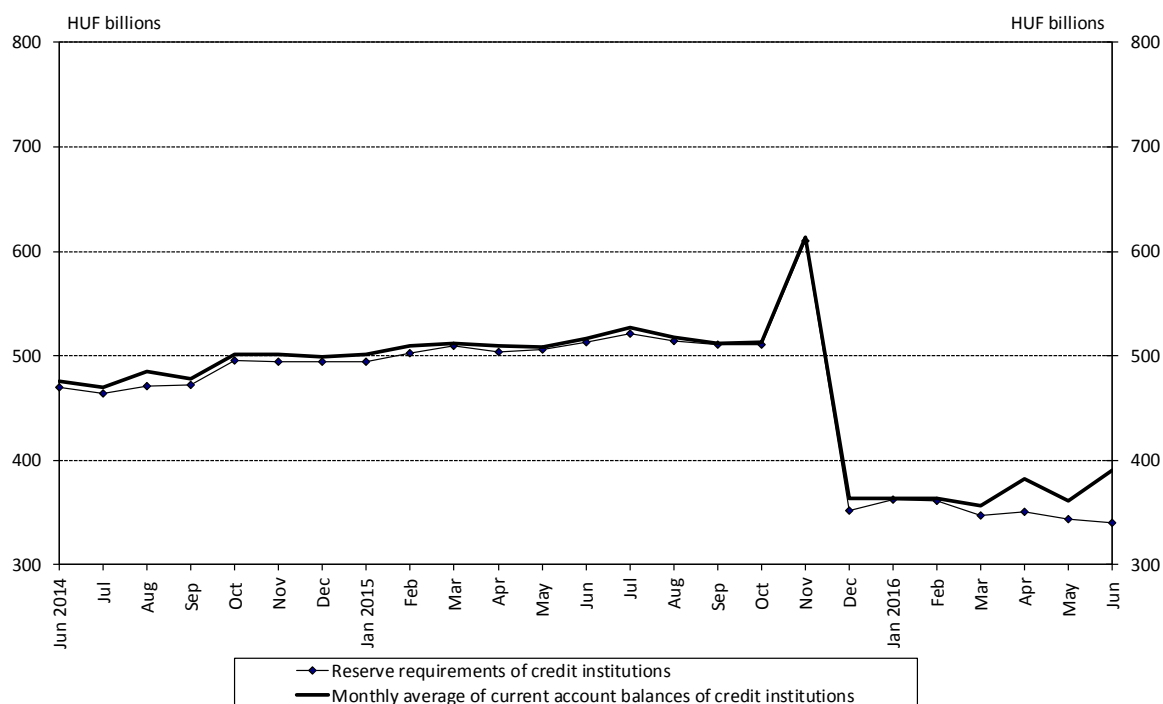
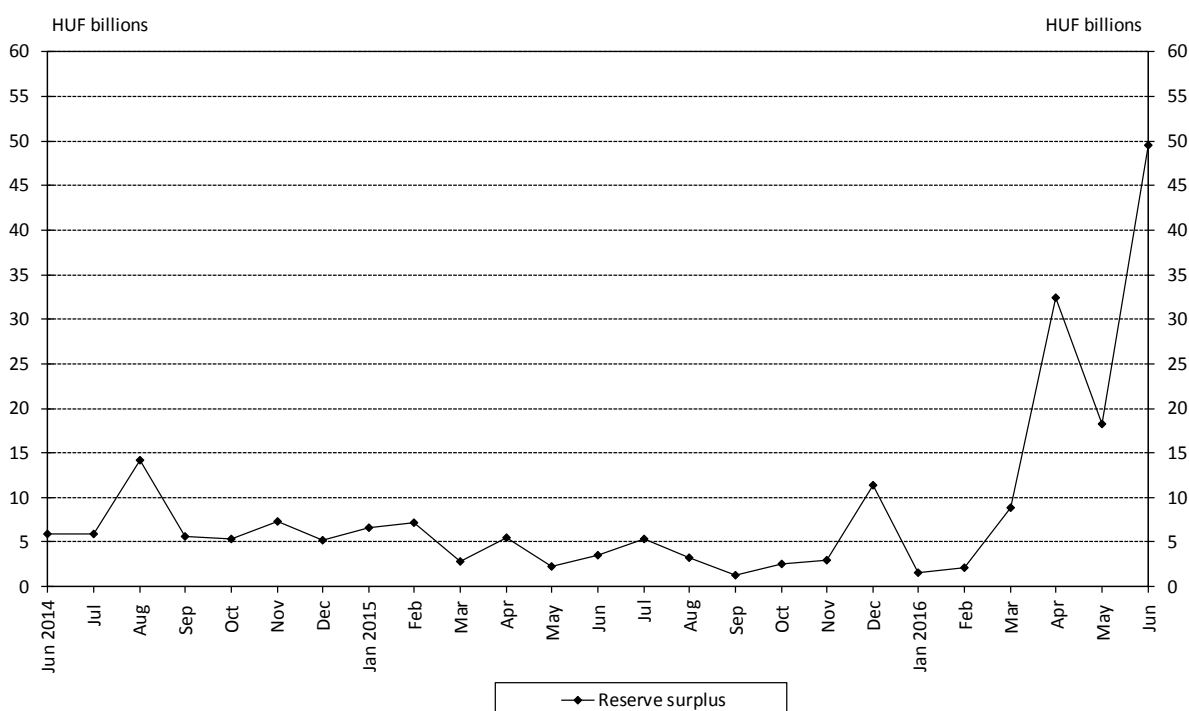


## Chart-pack to the Press Release on the preliminary statistical balance sheet of the MNB, June 2016

**Chart 1 Reserve requirements of credit institutions<sup>1</sup>**

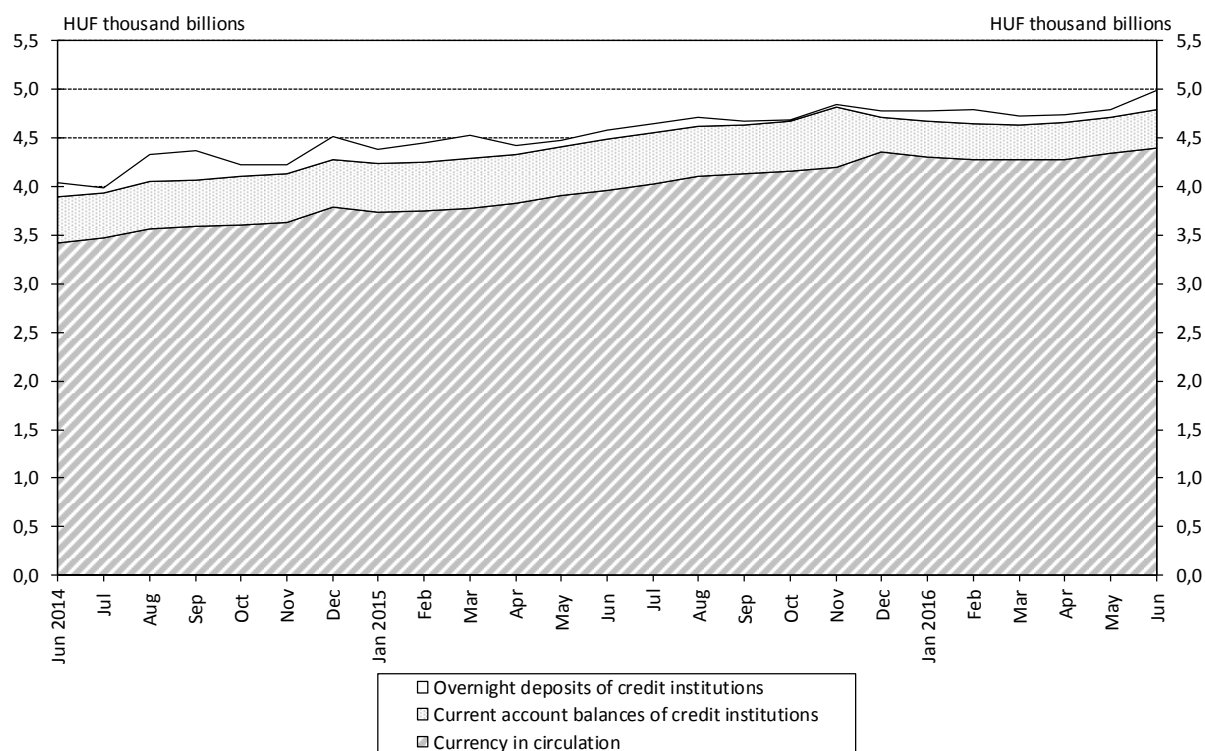


**Chart 2 Reserve surpluses of credit institutions**

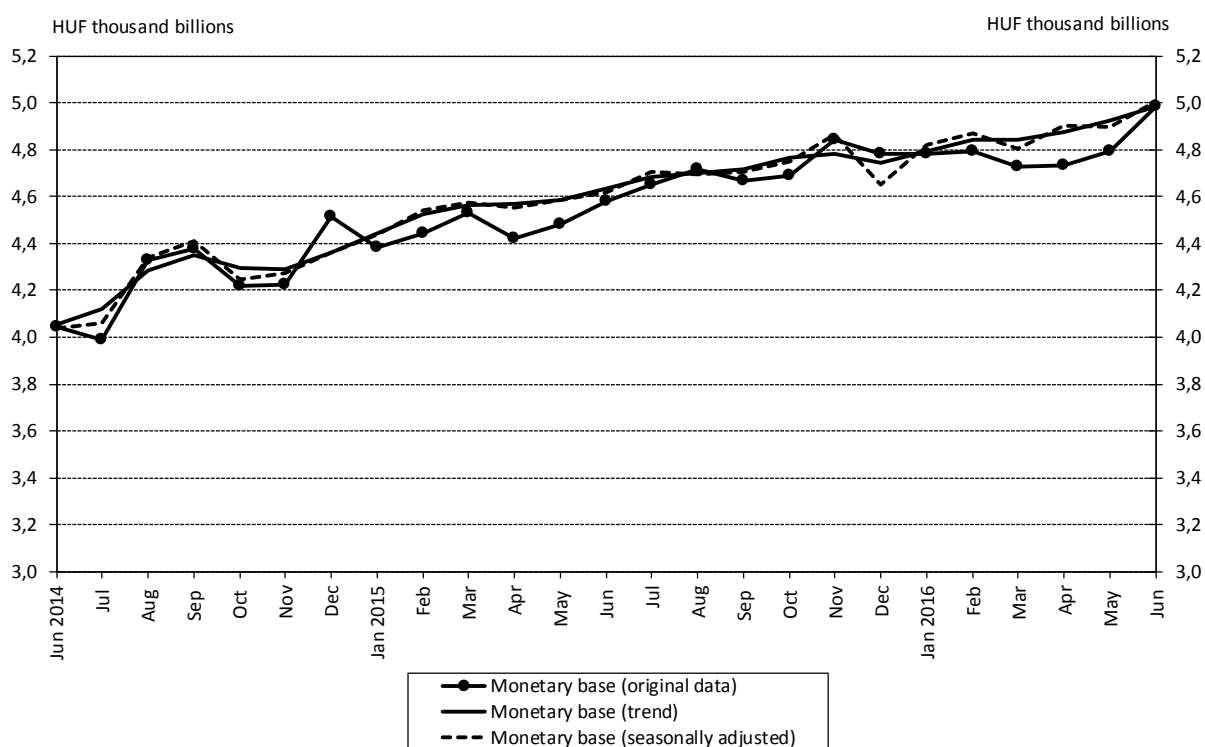


<sup>1</sup> Prior to 1 December 2015, credit institutions had the opportunity to choose, at most semi-annually, different reserve ratios (2%, 3% or 5%). However, MNB Decree 46/2015. (XI.11.), in effect from 1 December 2015, requires credit institutions to hold reserves at a fixed, uniform ratio of 2 per cent, replacing the flexible reserve requirement system.

**Chart 3 Components of the monetary base**

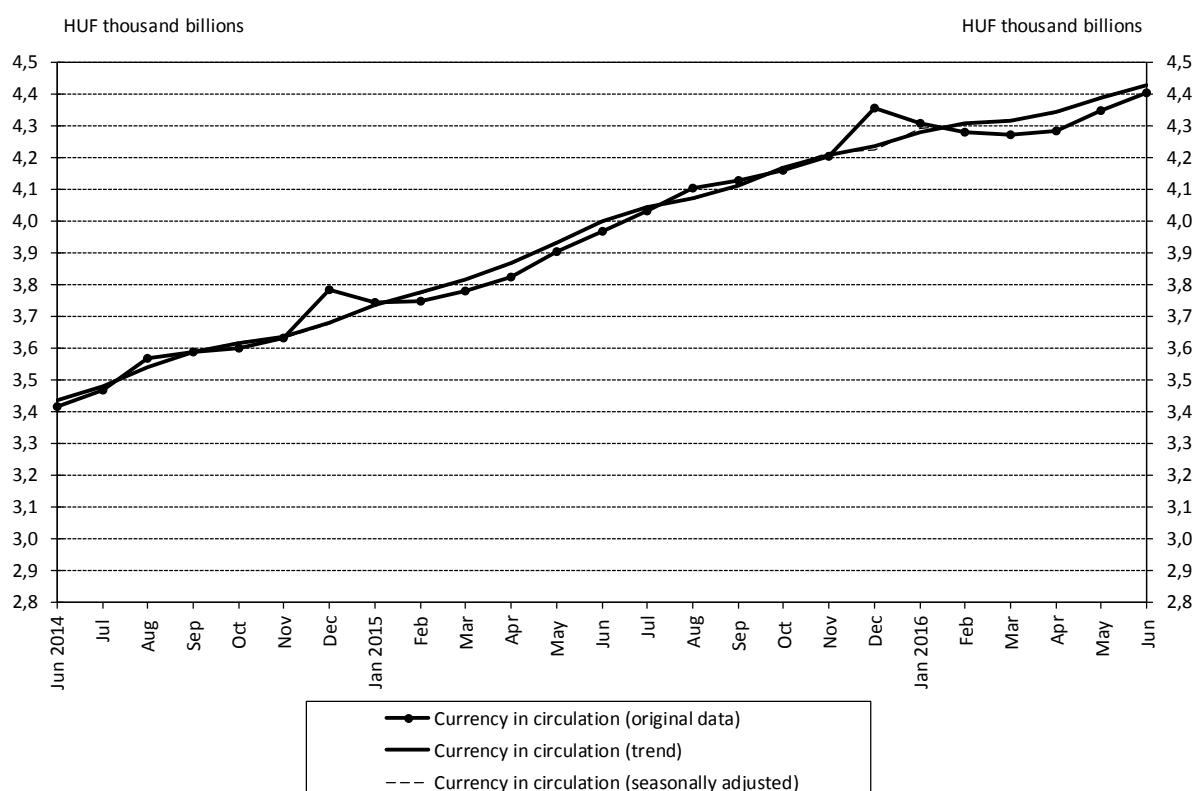


**Chart 4 Changes in the monetary base<sup>2</sup>**

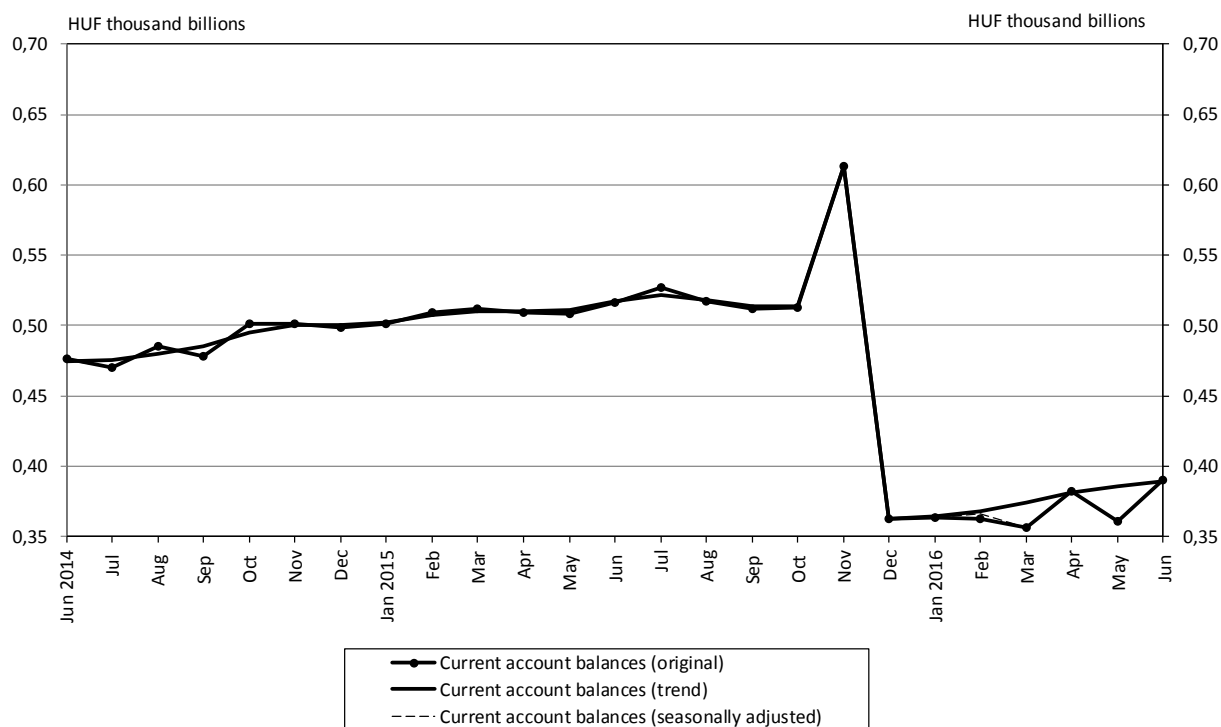


<sup>2</sup> See the Methodological notes.

**Chart 5 Monthly average stocks of currency in circulation**

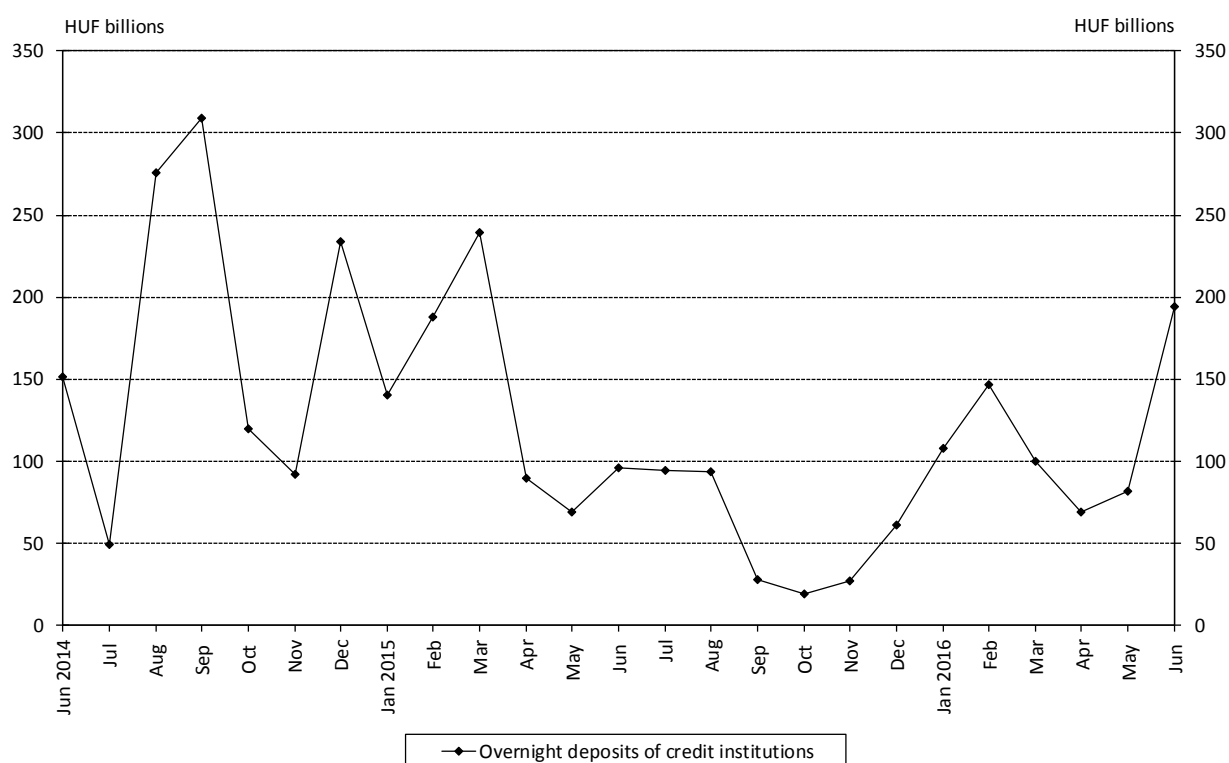


**Chart 6 Monthly average of credit institutions' current account balances<sup>3</sup>**

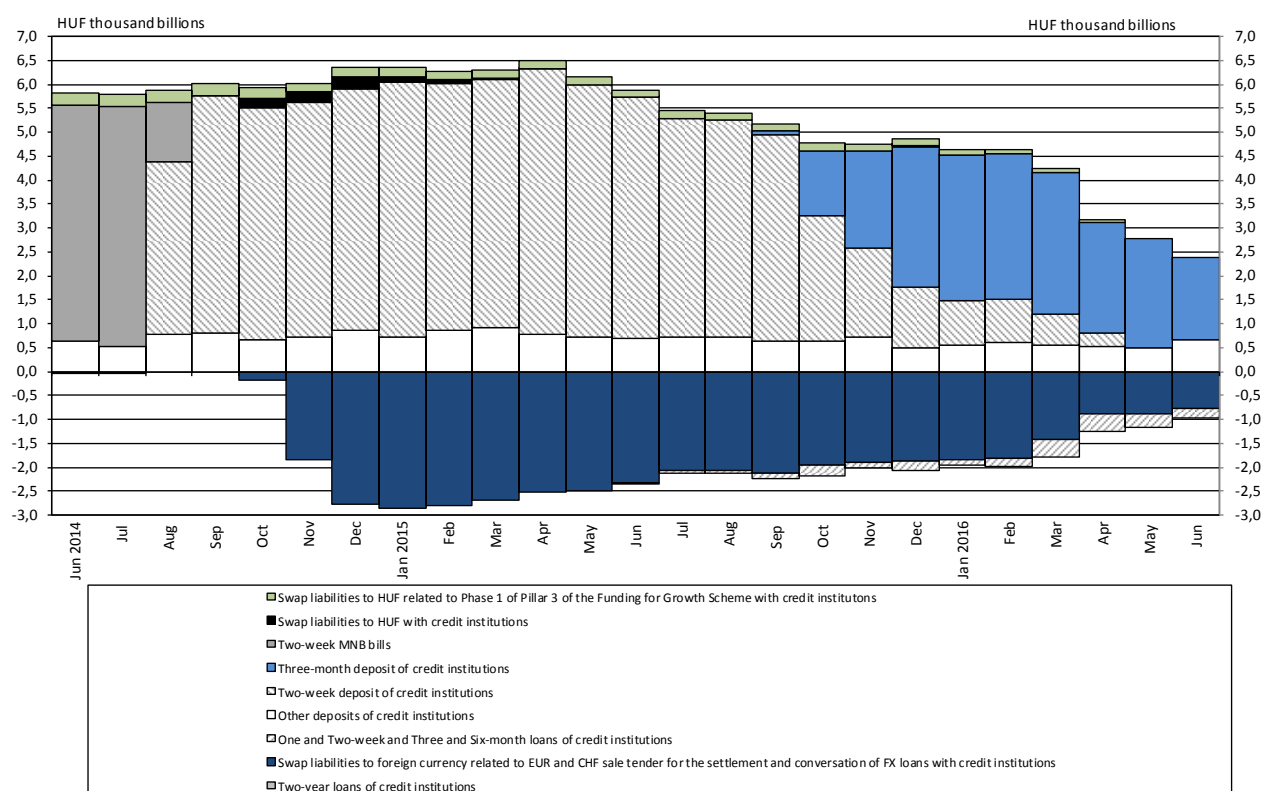


<sup>3</sup> See the Methodological notes.

**Chart 7 Monthly average of credit institutions' overnight deposits**

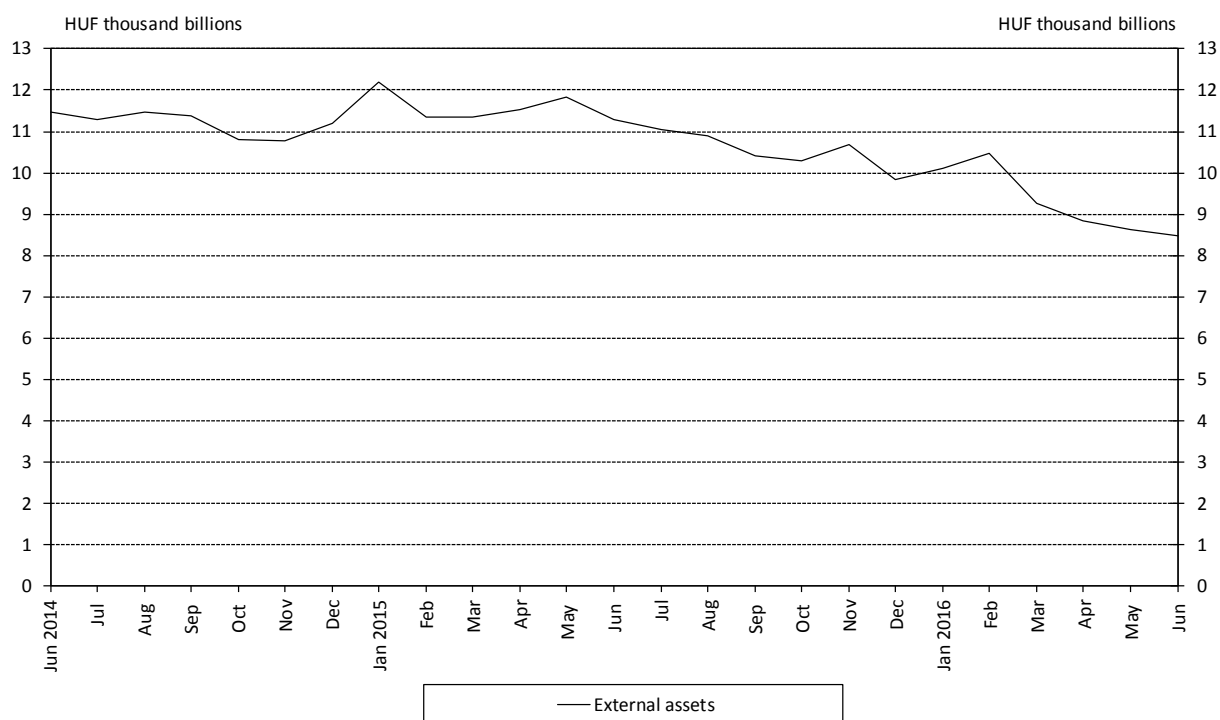


**Chart 8 Recourse to selected central bank instruments – monthly average stocks<sup>4</sup>**

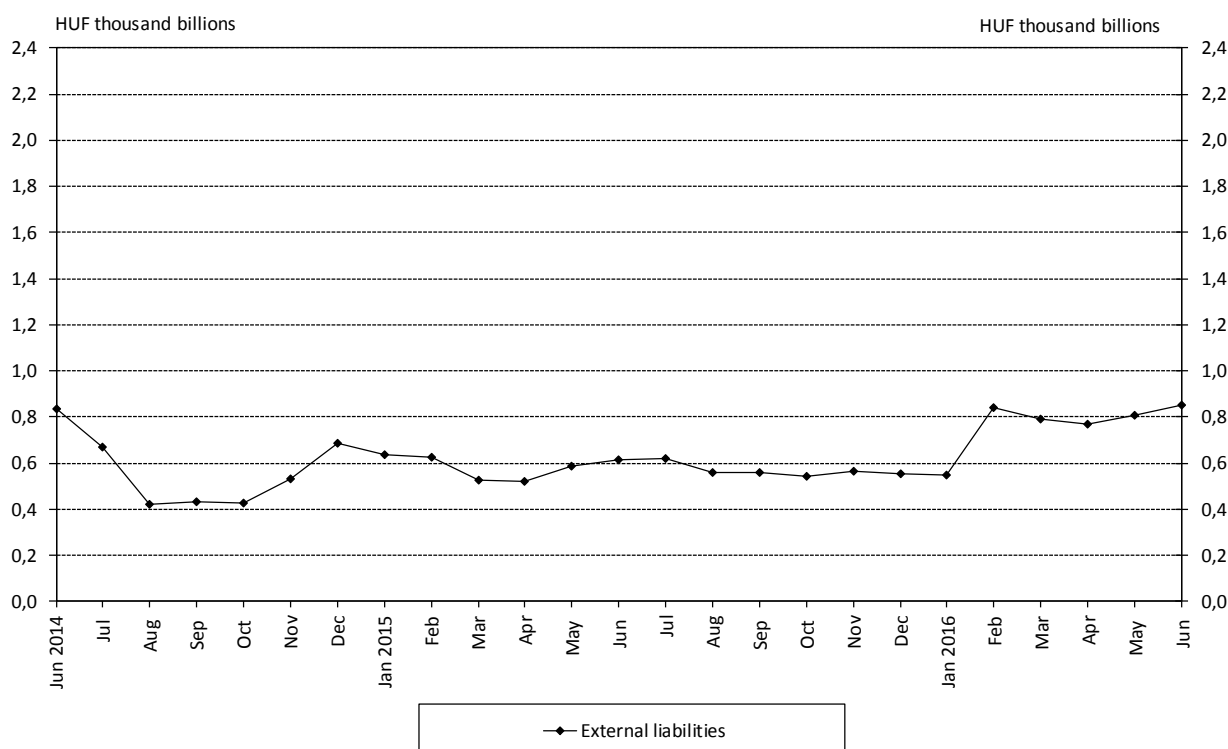


<sup>4</sup> Two-week forint-denominated MNB bills include the total stock in market hands (resident and non-resident holdings).

**Chart 9 External assets of the MNB at the end of the month**

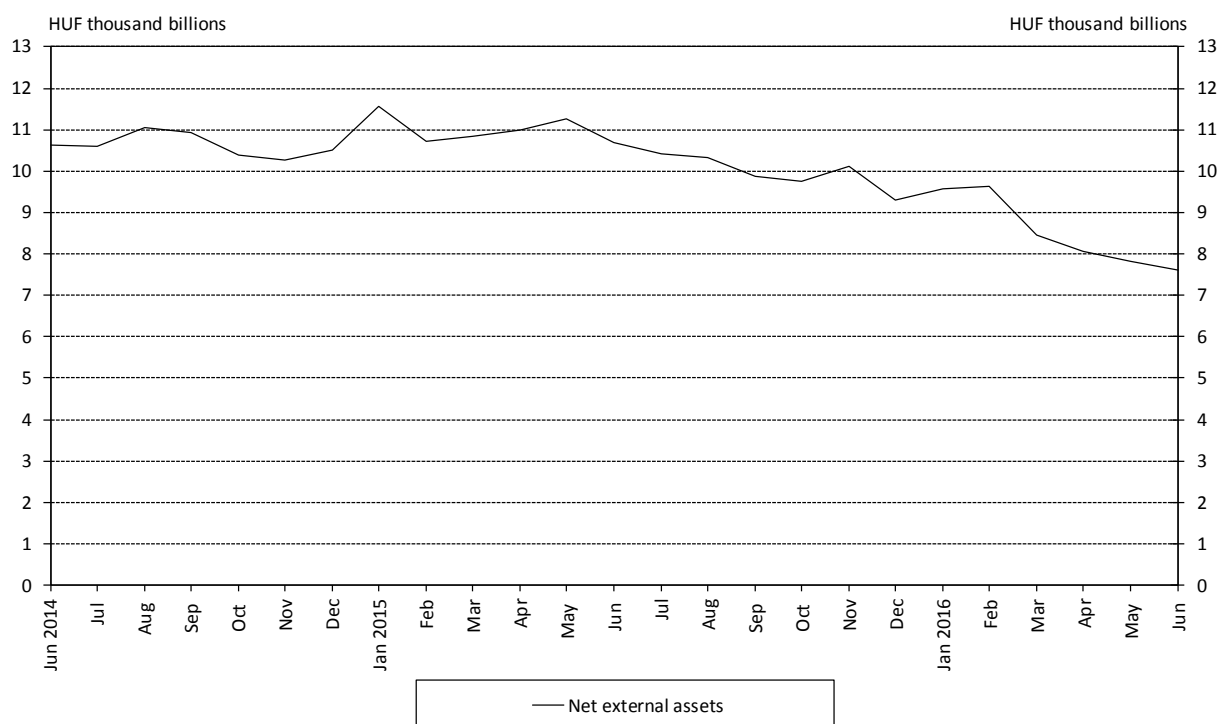


**Chart 10 External liabilities of the MNB at the end of the month<sup>5</sup>**



<sup>5</sup> Foreign liabilities include two-week MNB bills held by the non-resident sector up to August 2014. The breakdown of holdings of two-week MNB bills by residents and non-residents has been determined on the basis of securities accounts. For more information, see the Methodological notes.

**Chart 11 Net external assets of the MNB at the end of the month**



**Chart 12 Central bank interest rates and average interbank overnight lending rates**

