

Chart-pack to the Press Release on the preliminary statistical balance sheet of the MNB, November 2018

Chart 1 Reserve requirements of credit institutions¹

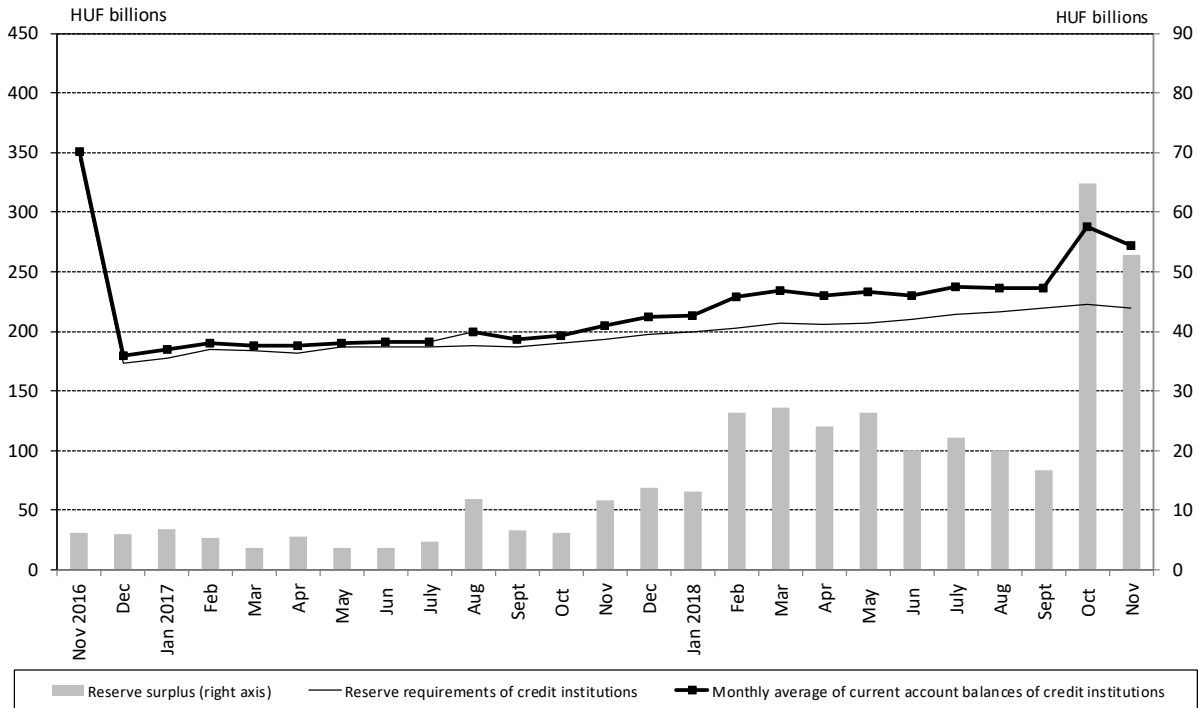
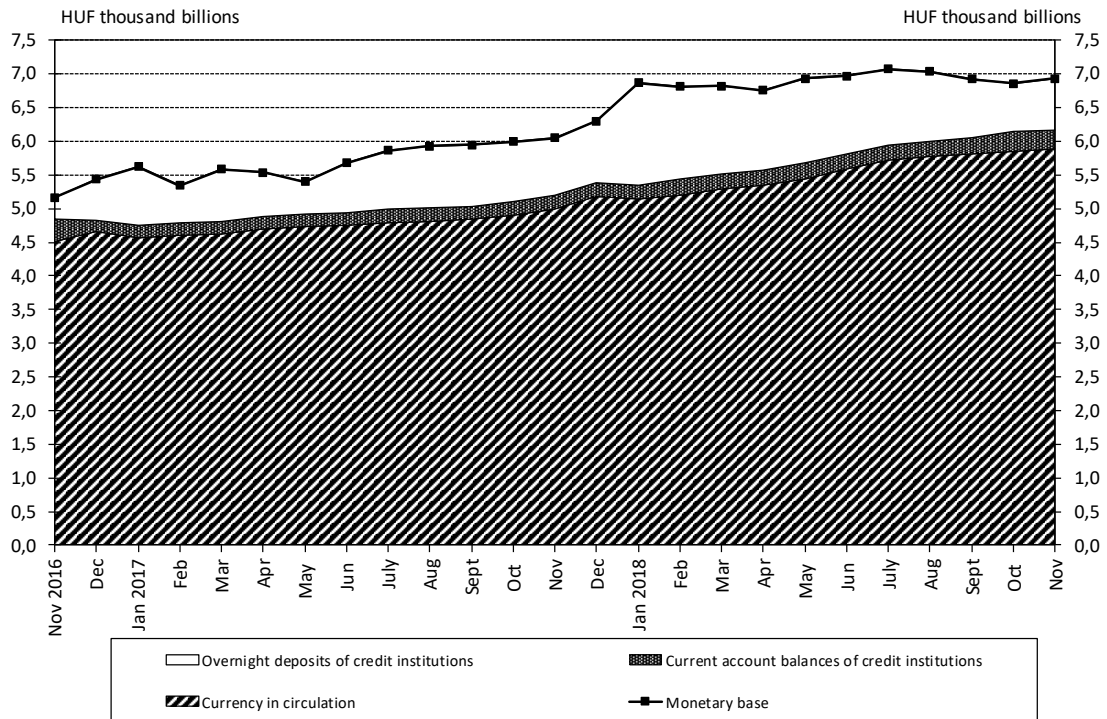


Chart 2 Components of the monetary base



¹ From December 1 2015, requires credit institutions to hold reserves at a fixed, uniform ratio of 2 per cent, and from 1 December 2016 a fixed 1 per cent is the required reserve ratio.

Chart 3 Changes in the monetary base²

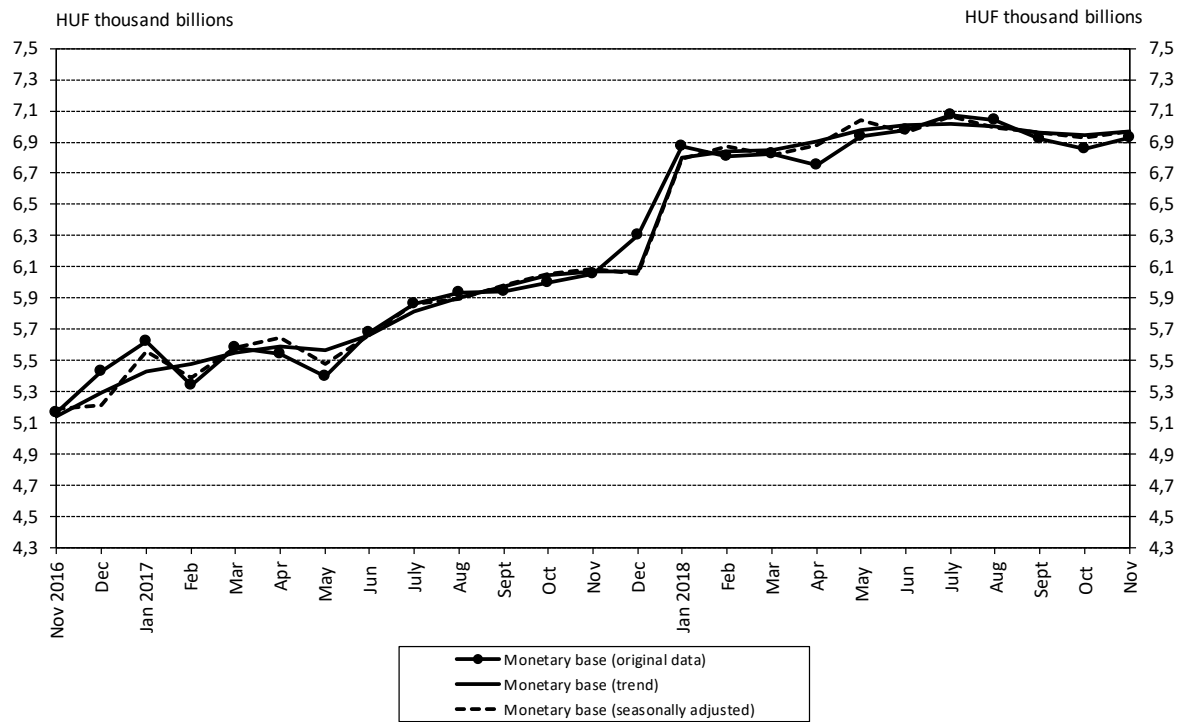
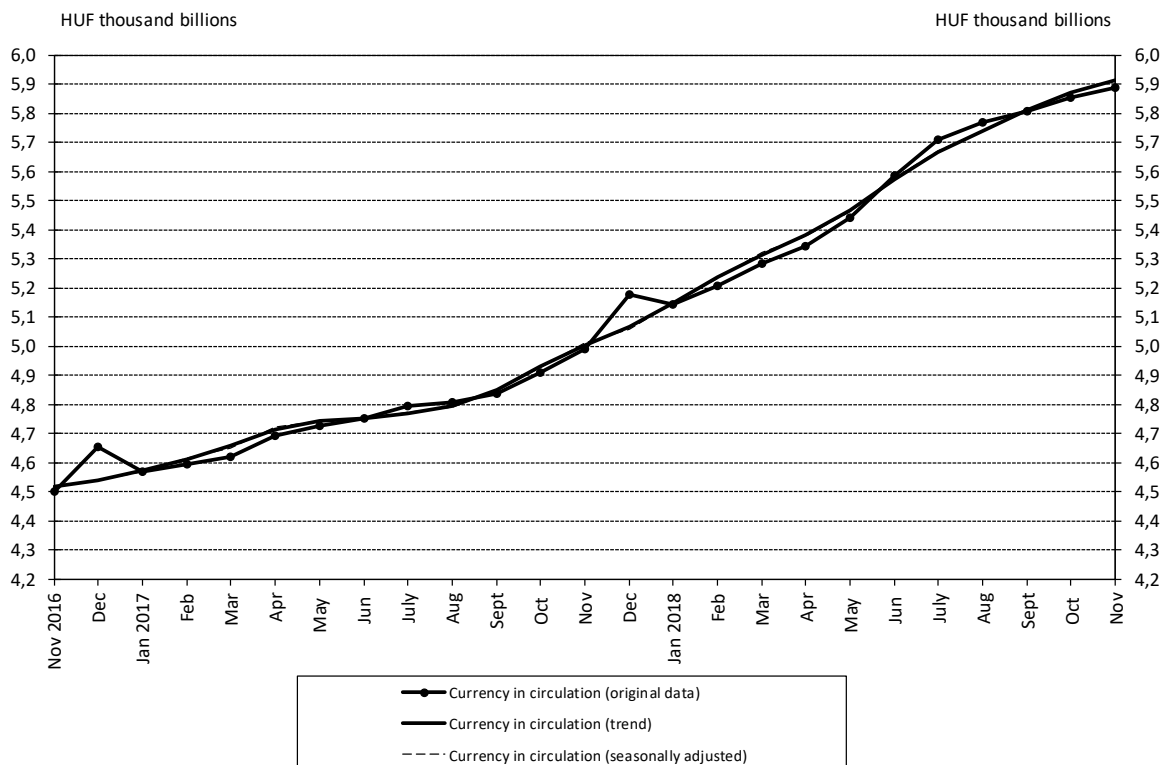


Chart 4 Monthly average stocks of currency in circulation



² See the Methodological notes.

Chart 5 Recourse to selected central bank instruments – monthly average stocks

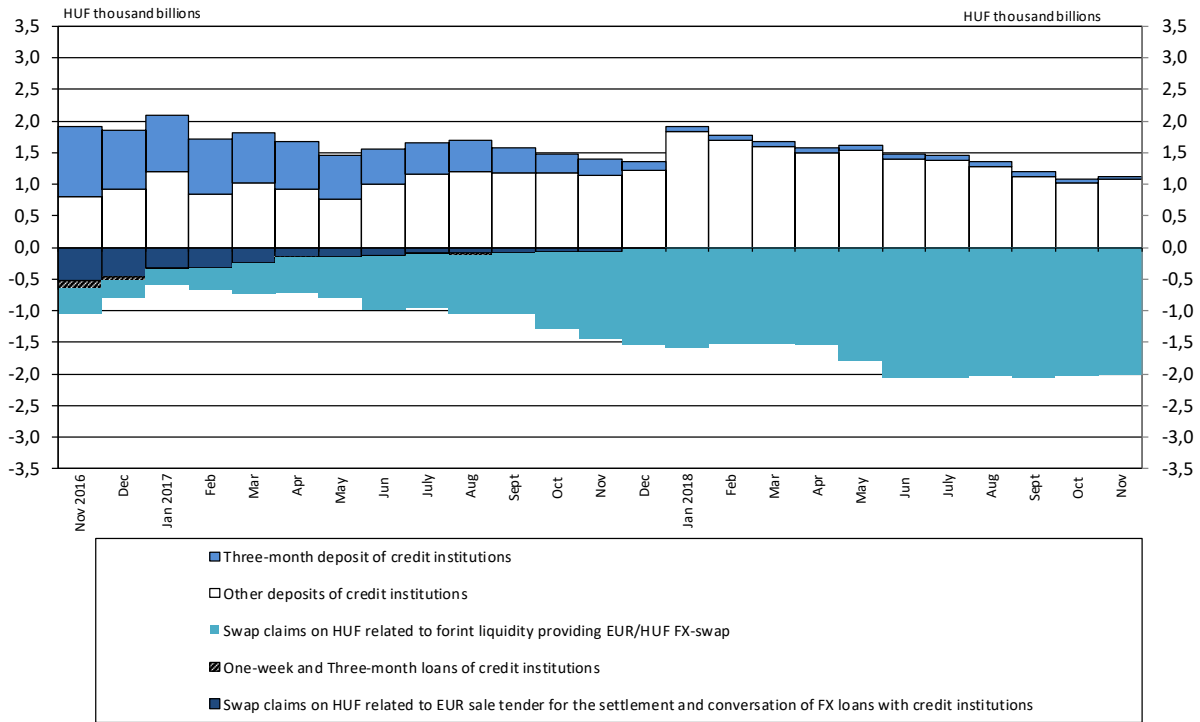


Chart 6 External assets and external liabilities of the MNB at the end of the month

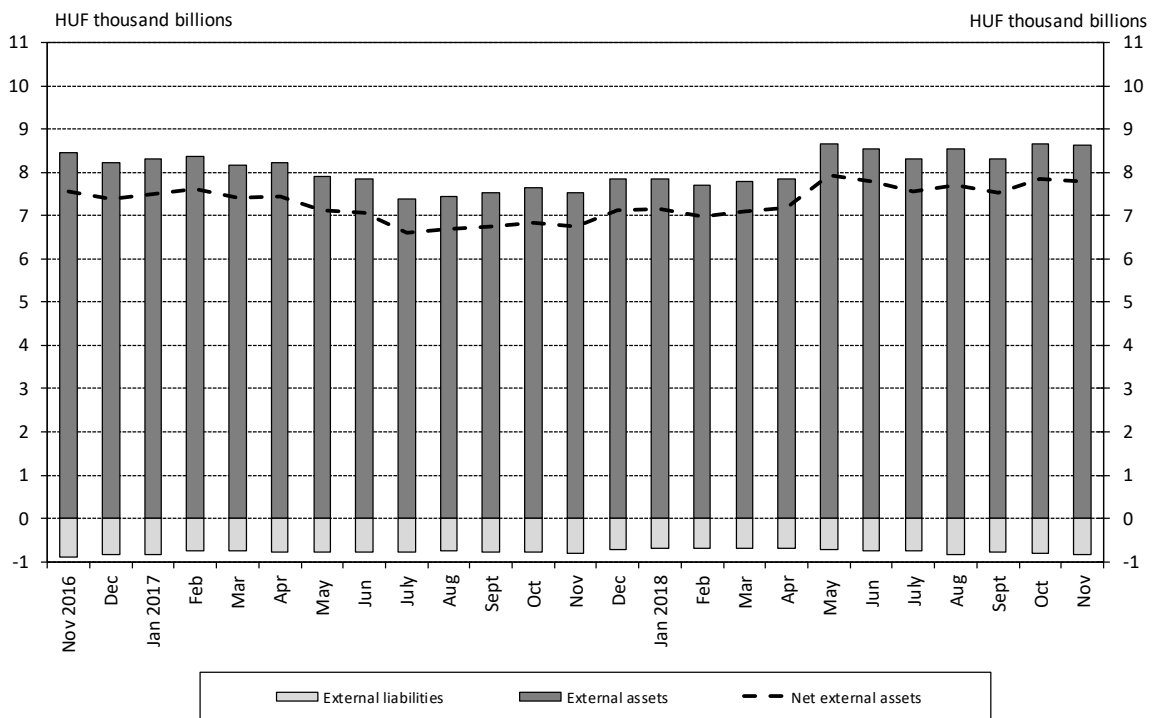


Chart 7 Central bank interest rates and average interbank overnight lending rates

