

Charts to the press release on household and non-financial corporate sector interest rates
May 2009

Chart 1 Values of new forint, euro and Swiss franc housing loans – not seasonally adjusted data

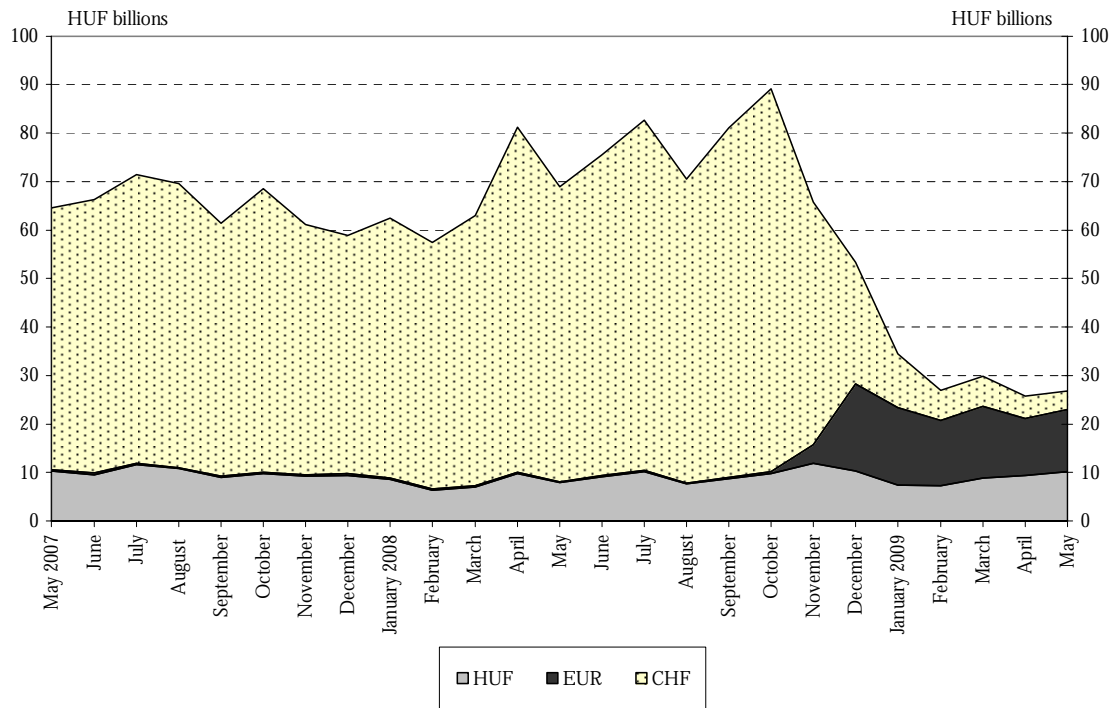
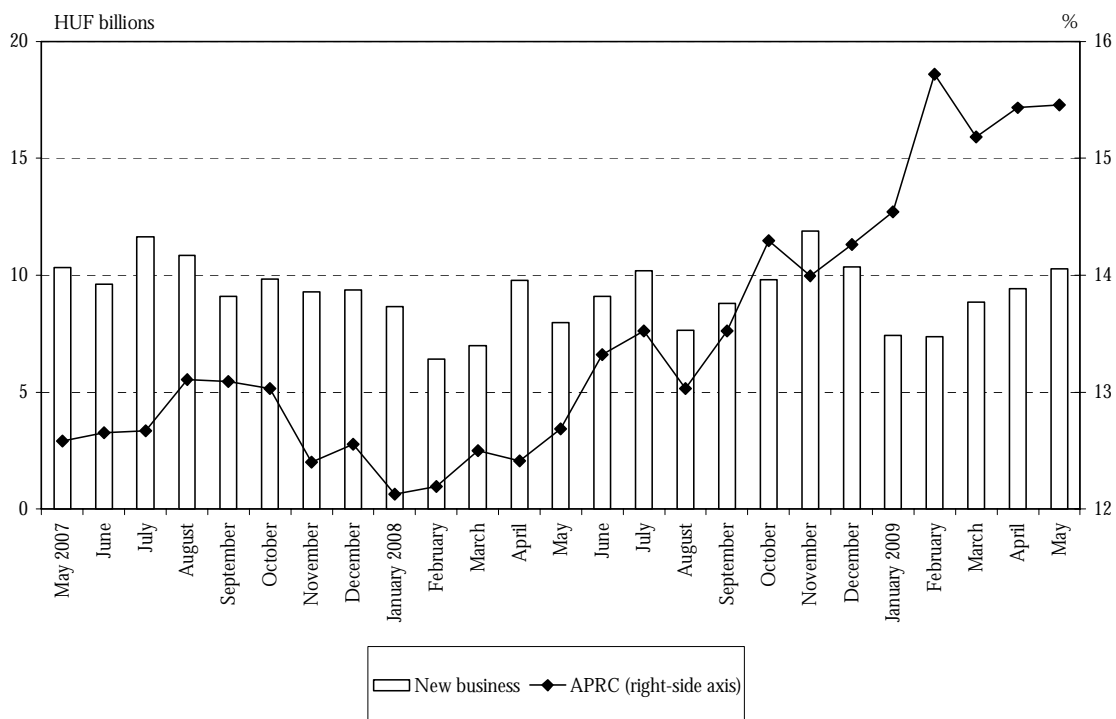


Chart 2 Monthly average APRC on forint housing loans and the total amount of new business¹



¹ The seasonally adjusted data could not be interpreted, due to the high volatility of time series data.

Chart 3 Monthly average APRC on Swiss franc housing loans and the total amount of new business²

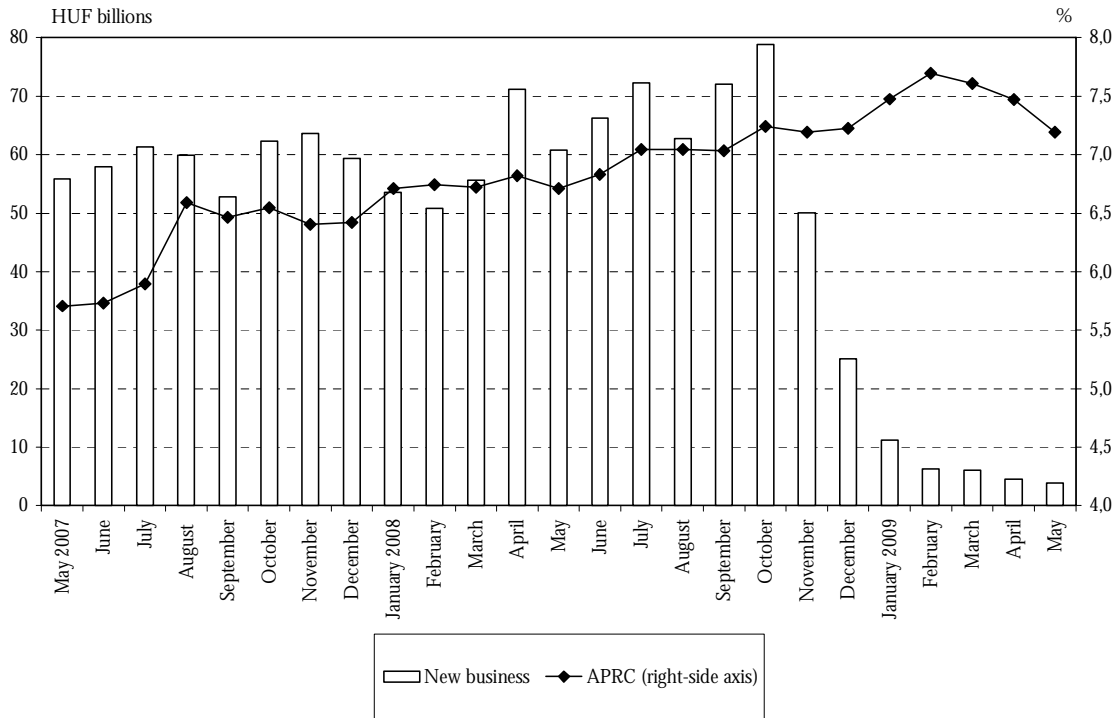
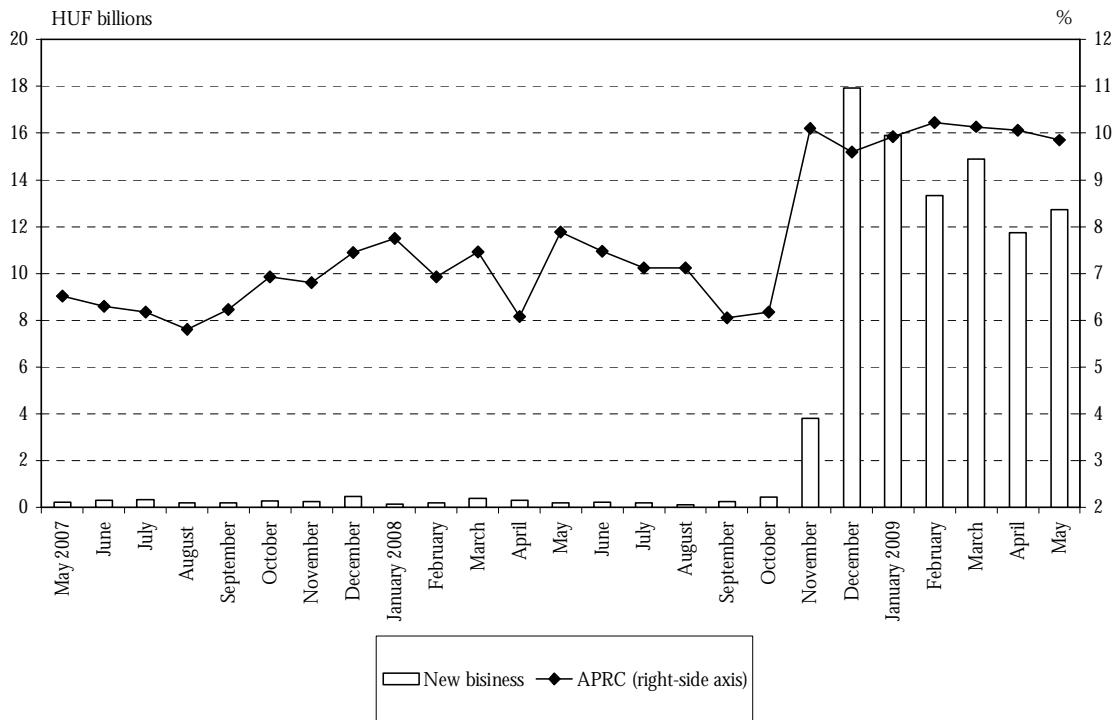


Chart 4 Monthly average APRC on euro housing loans and the total amount of new business³



² Loans with floating interest rates or with up to 1 year initial rate fixation.

³ The seasonally adjusted data could not be interpreted, due to the high volatility of time series data.

Chart 5 Values of new forint, euro and Swiss franc general purpose mortgage loans – not seasonally adjusted data

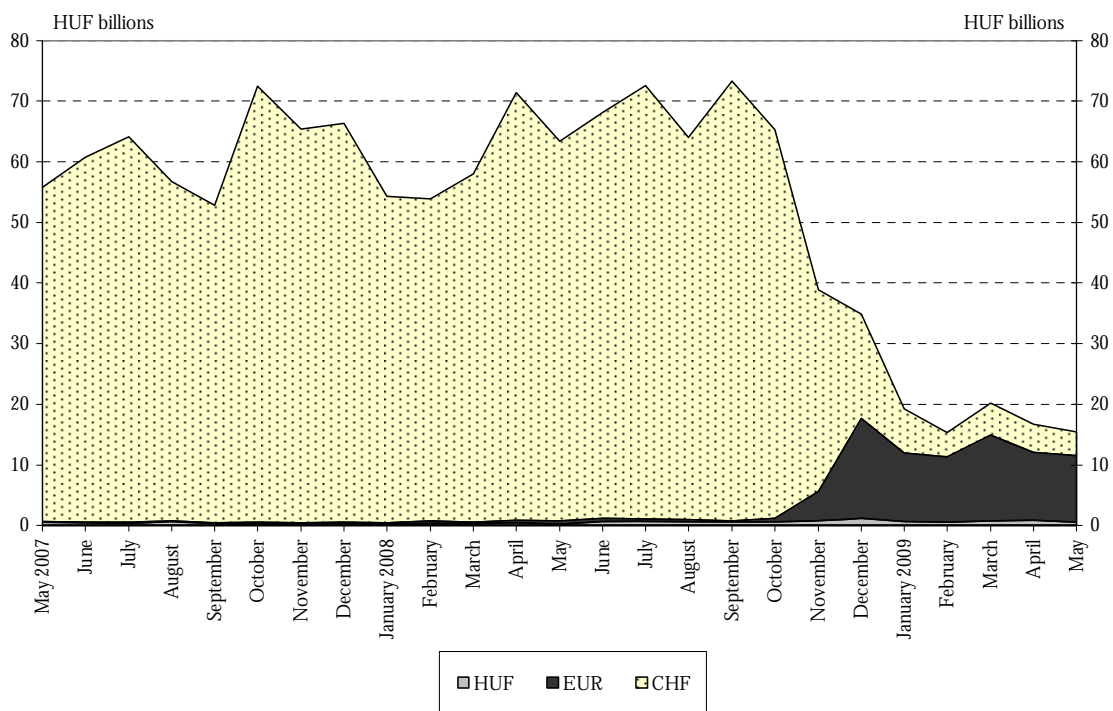
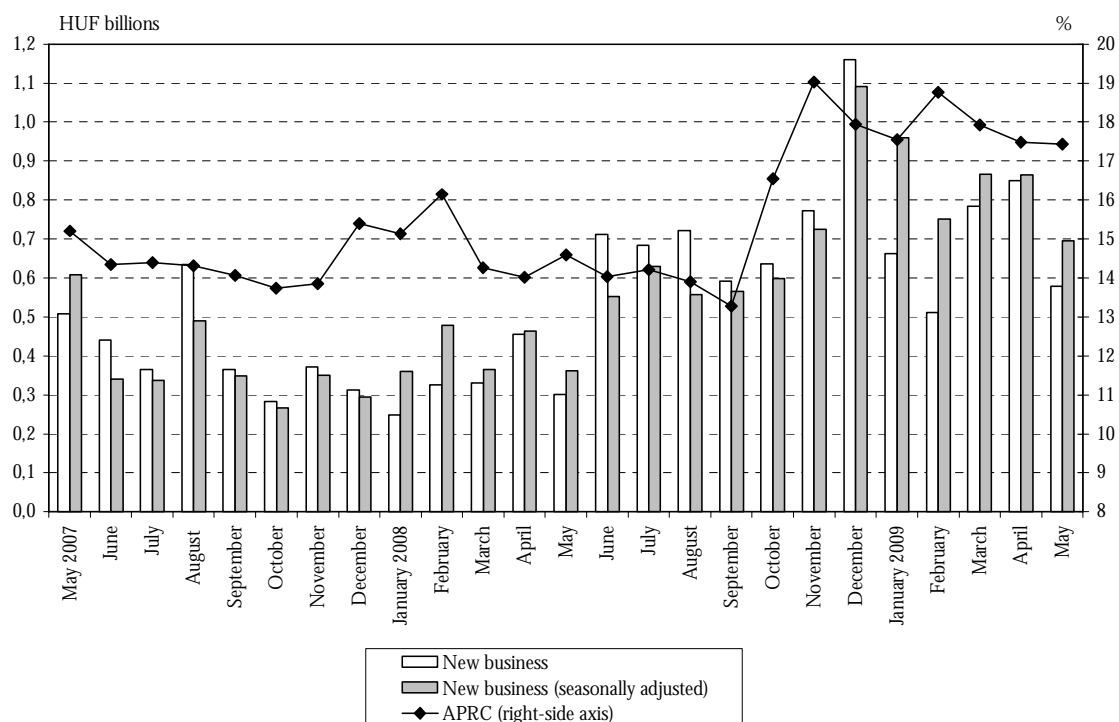


Chart 6 Monthly average APRC on forint general purpose mortgage loans to households and the total amount of new business⁴



⁴ Loans with floating interest rates or with up to 1 year initial rate fixation.

Chart 7 Monthly average APRC on Swiss franc general purpose mortgage loans to households and the total amount of new business⁵

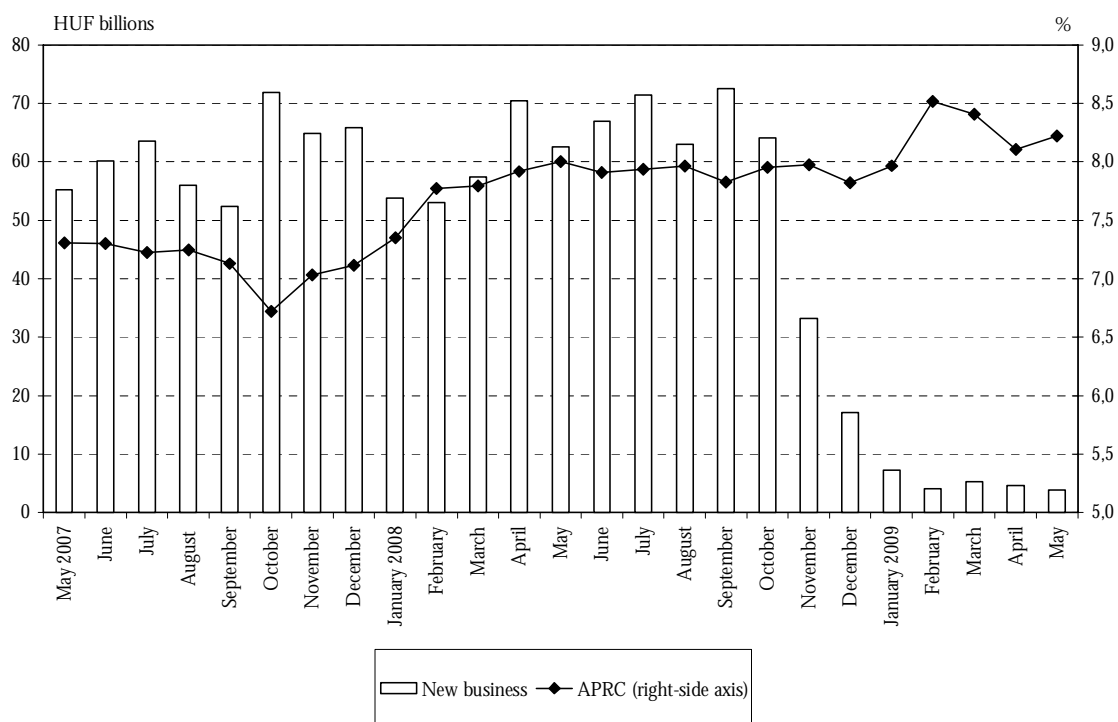
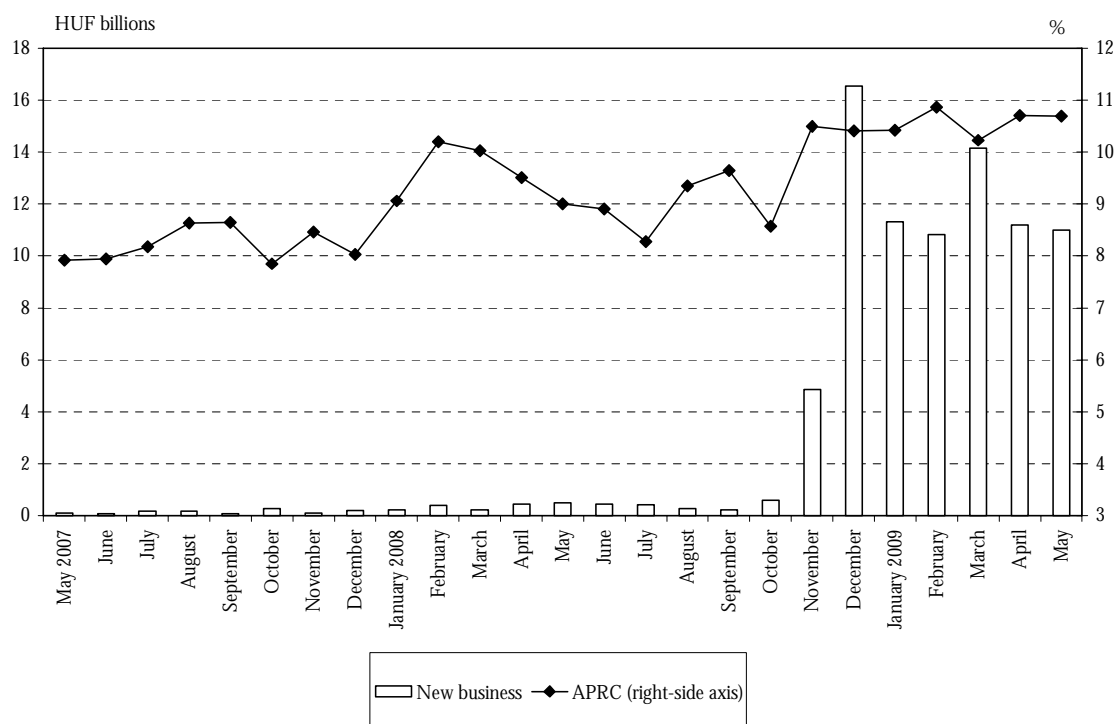


Chart 8 Monthly average APRC on euro general purpose mortgage loans to households and the total amount of new business



⁵ Loans with floating interest rates or with up to 1 year initial rate fixation.

Chart 9 Values of new forint, euro and Swiss franc personal loans – not seasonally adjusted data

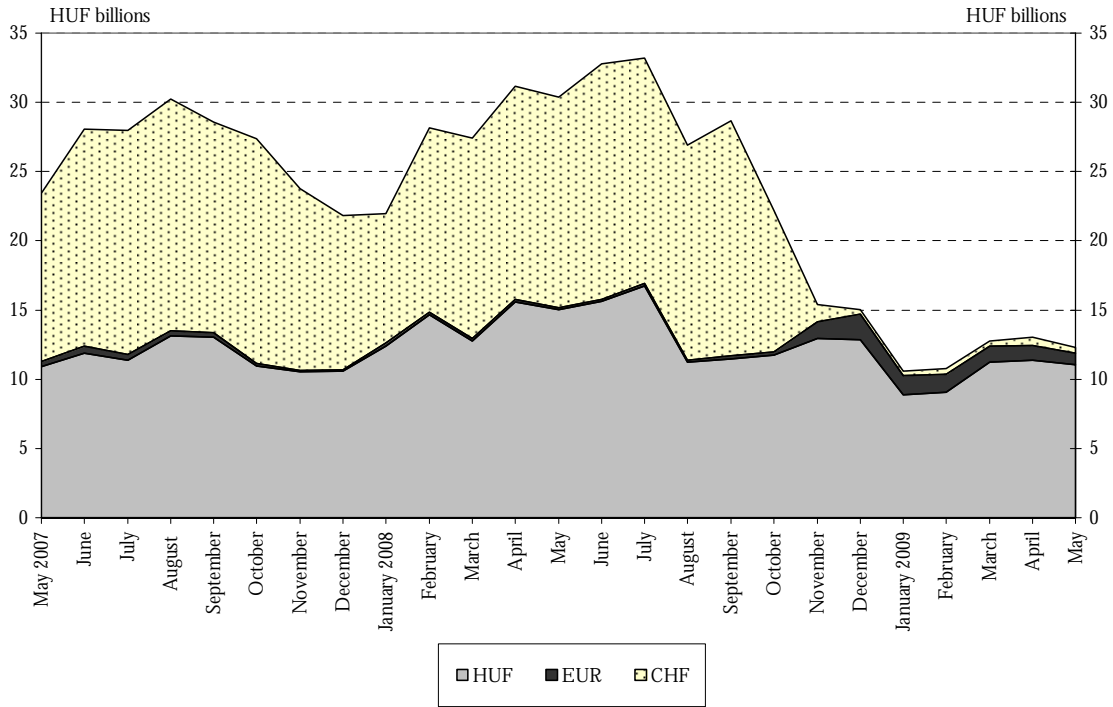


Chart 10 Monthly average APRC on forint personal loans and the total amount of new business

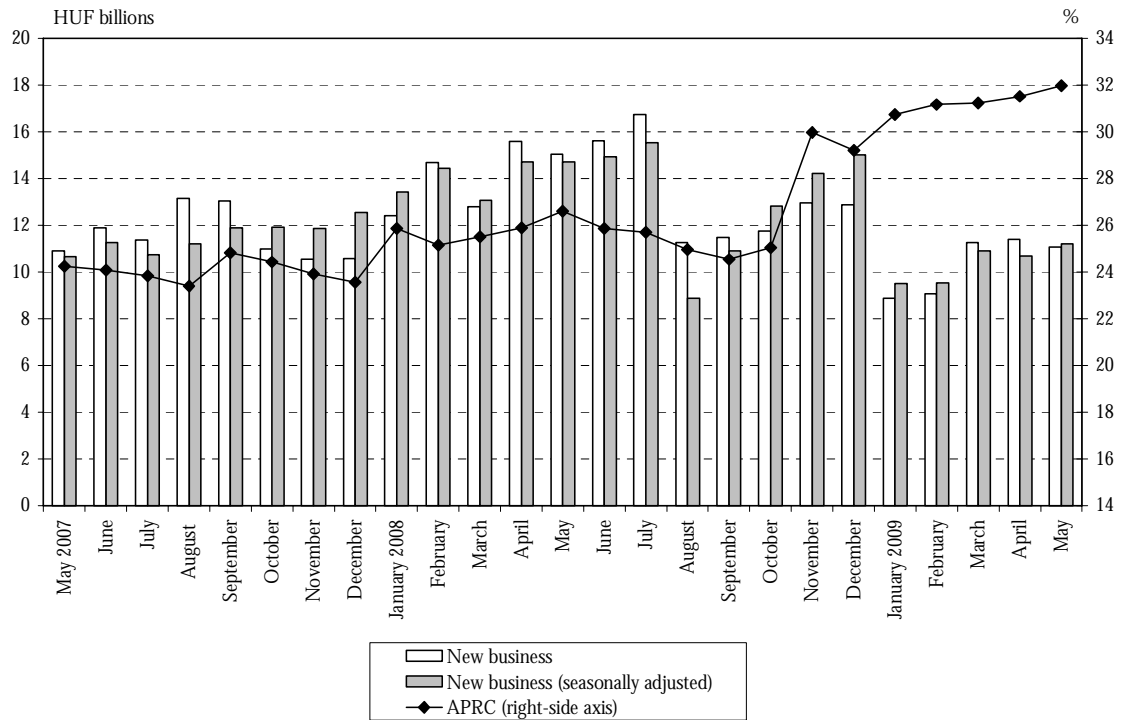


Chart 11 Monthly average APRC on Swiss franc personal loans and the total amount of new business⁶

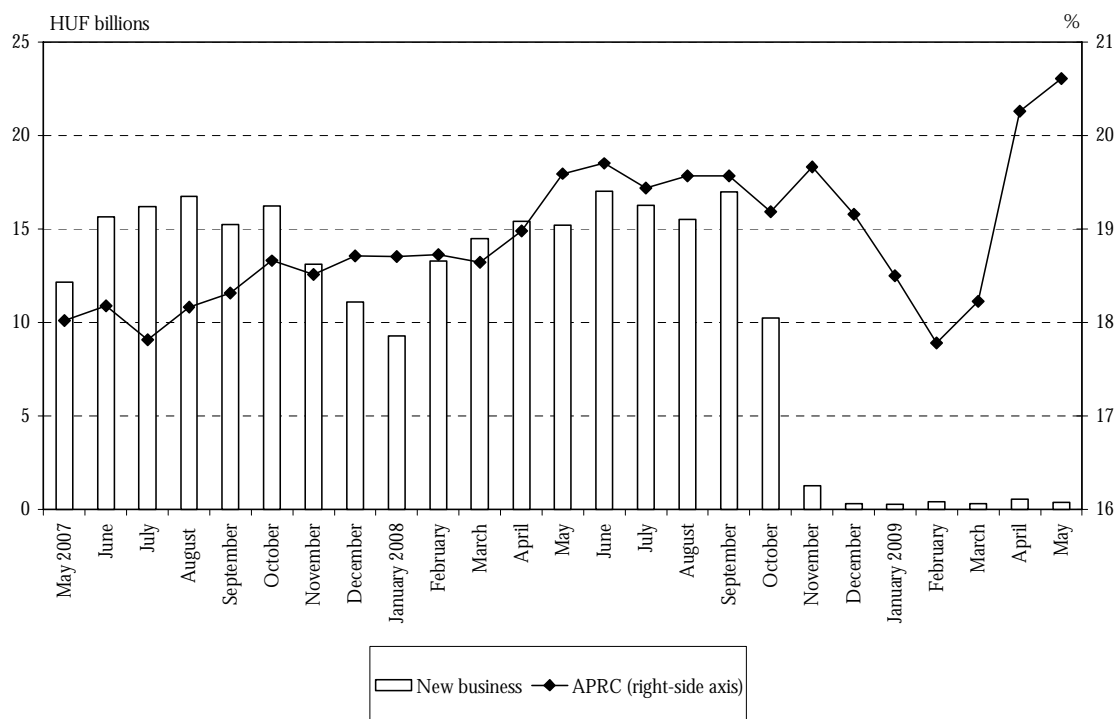
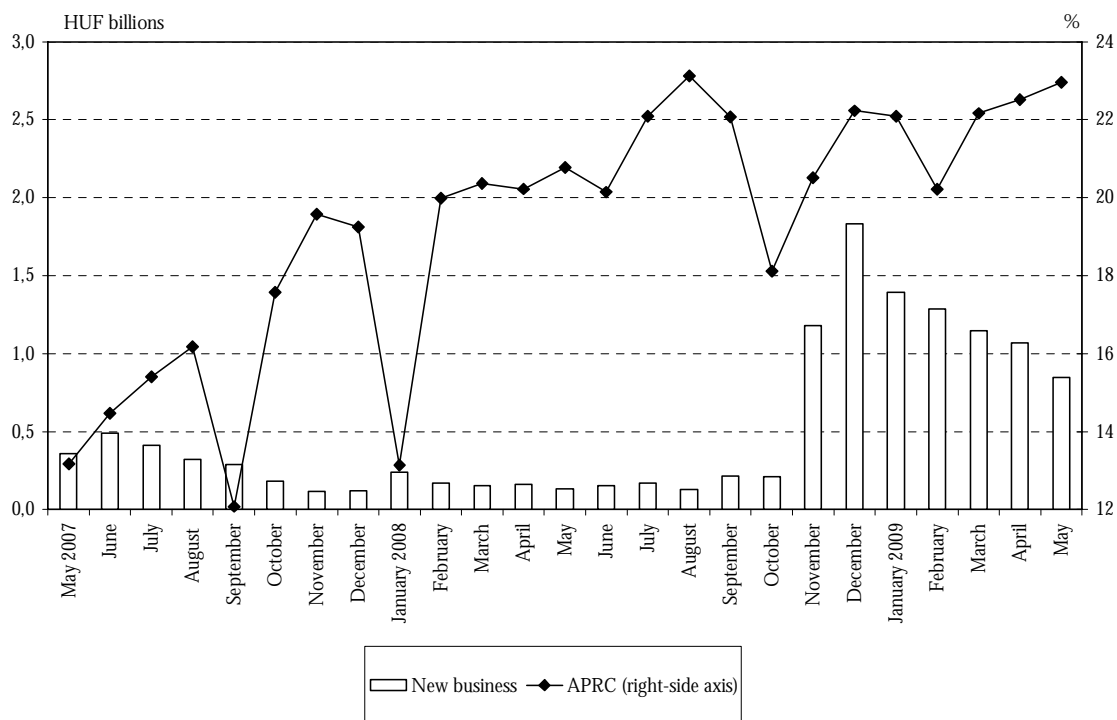


Chart 12 Monthly average APRC on euro personal loans and the total amount of new business⁷



⁶ Loans with floating interest rates or with up to 1 year initial rate fixation. The seasonally adjusted data could not be interpreted, due to the high volatility of time series data.

⁷ Loans with floating interest rates or with up to 1 year initial rate fixation.

Chart 13 Monthly average APRC on forint loans for purchases of goods and the total amount of new business⁸

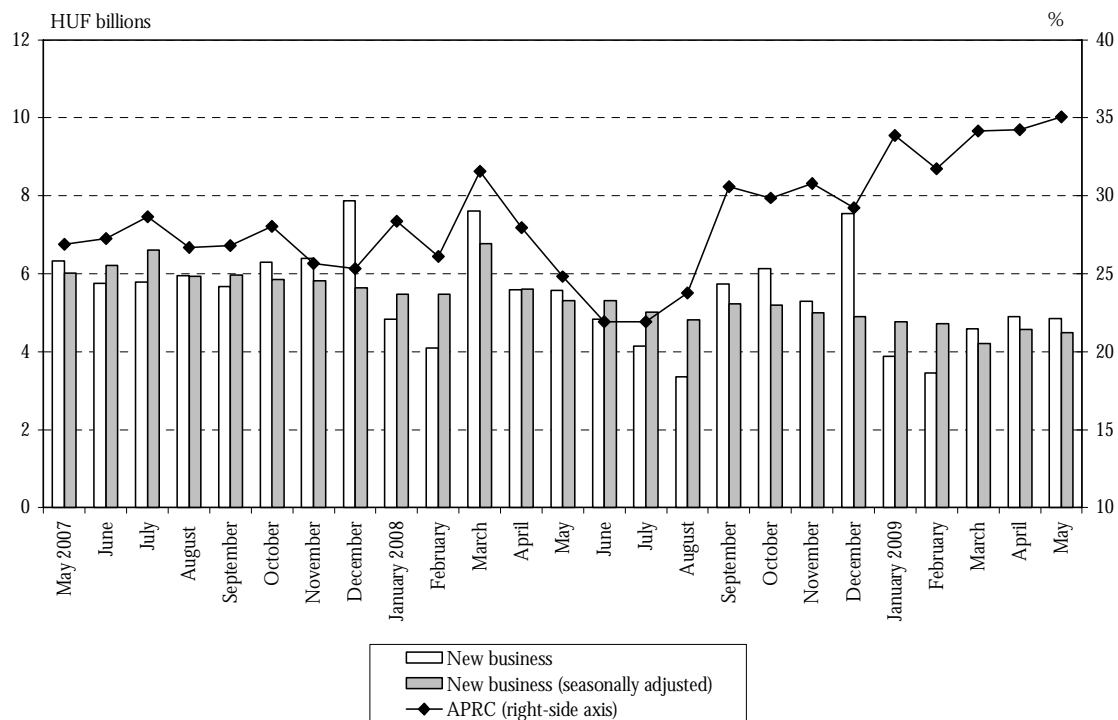
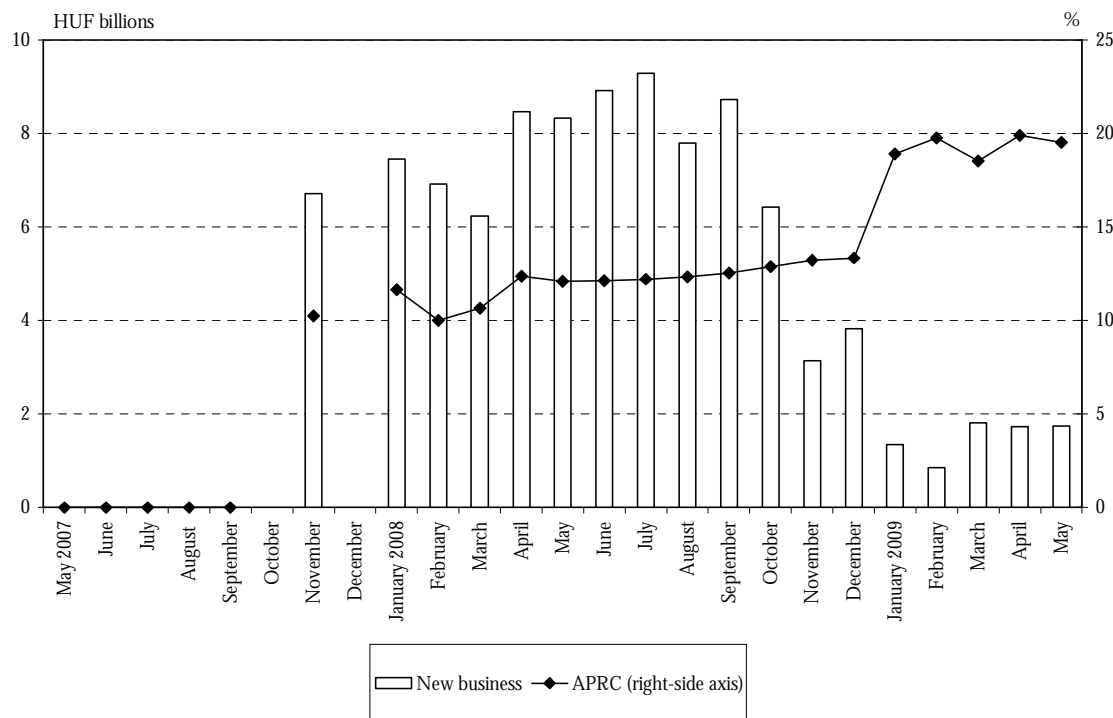


Chart 14 Monthly average APRC on Swiss franc car loans and the total amount of new business



⁸ Loans with floating interest rates or with up to 1 year initial rate fixation.

Chart 15 Monthly average interest rate on forint loans to non-financial corporations up to the equivalent of EUR 1 million and the total amount of new business⁹

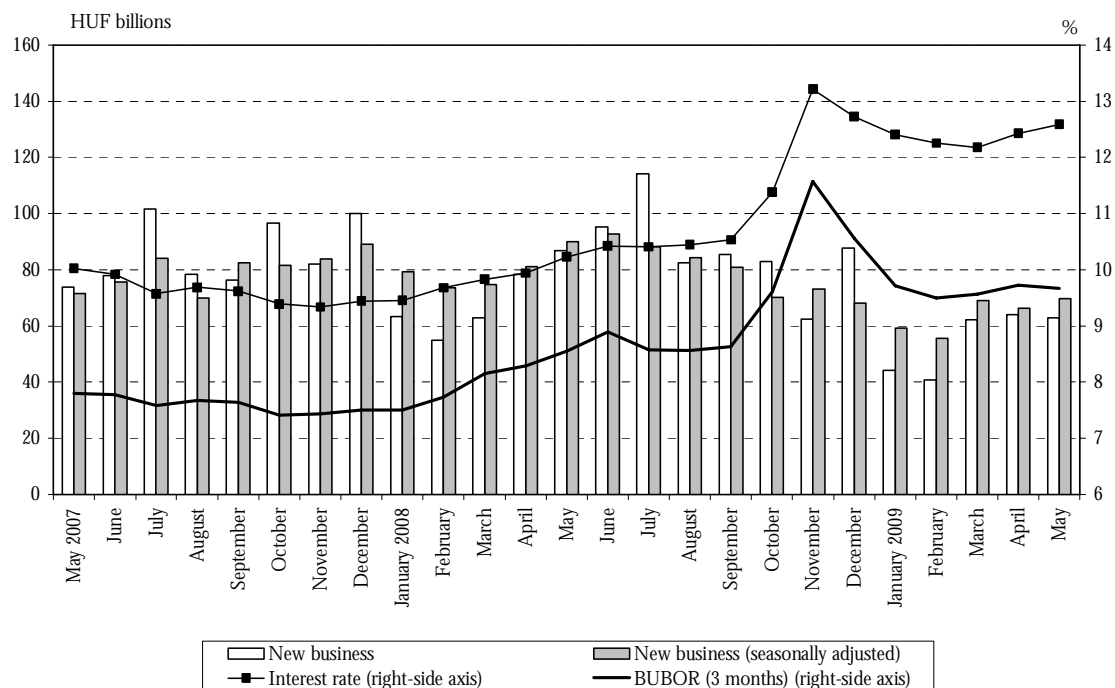
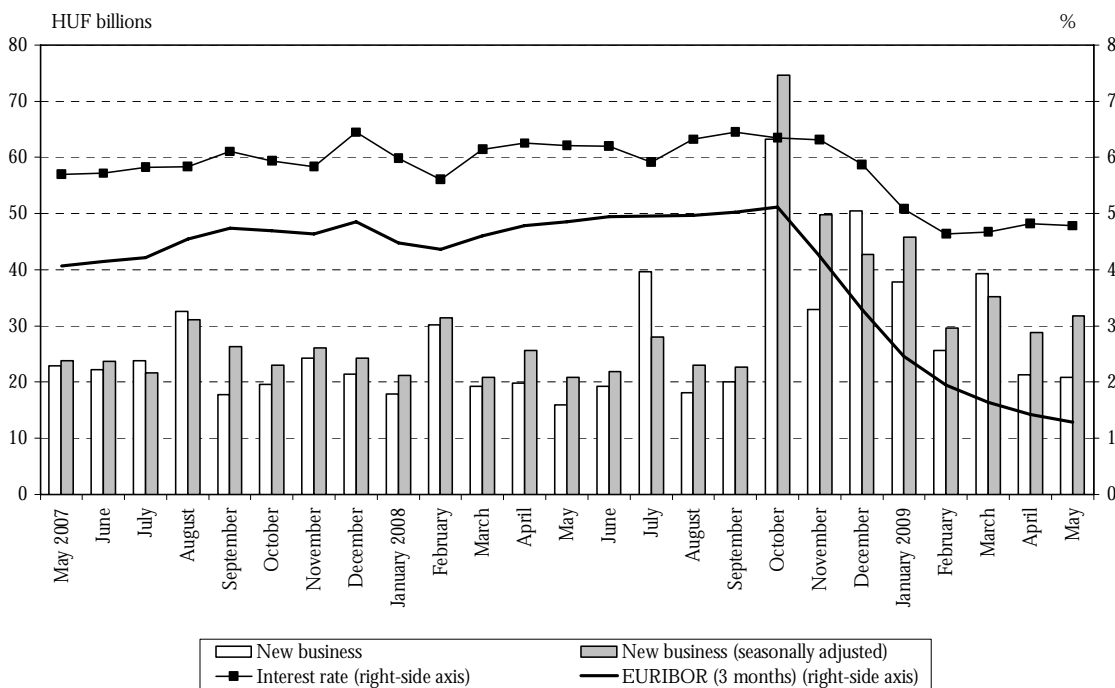


Chart 16 Monthly average interest rate on euro loans to non-financial corporations up to the equivalent of EUR 1 million and the total amount of new business⁷



⁹ Loans with floating interest rates or with up to 1 year initial rate fixation.

Chart 17 Monthly average interest rate on forint loans to non-financial corporations over the equivalent of EUR 1 million and the total amount of new business¹⁰

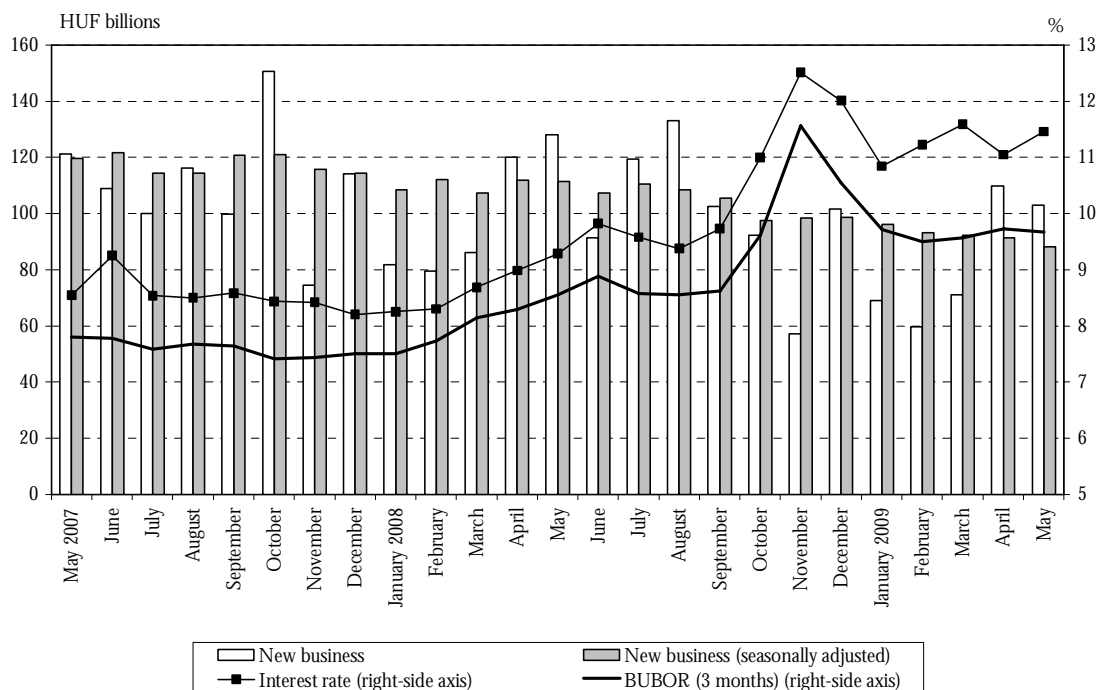
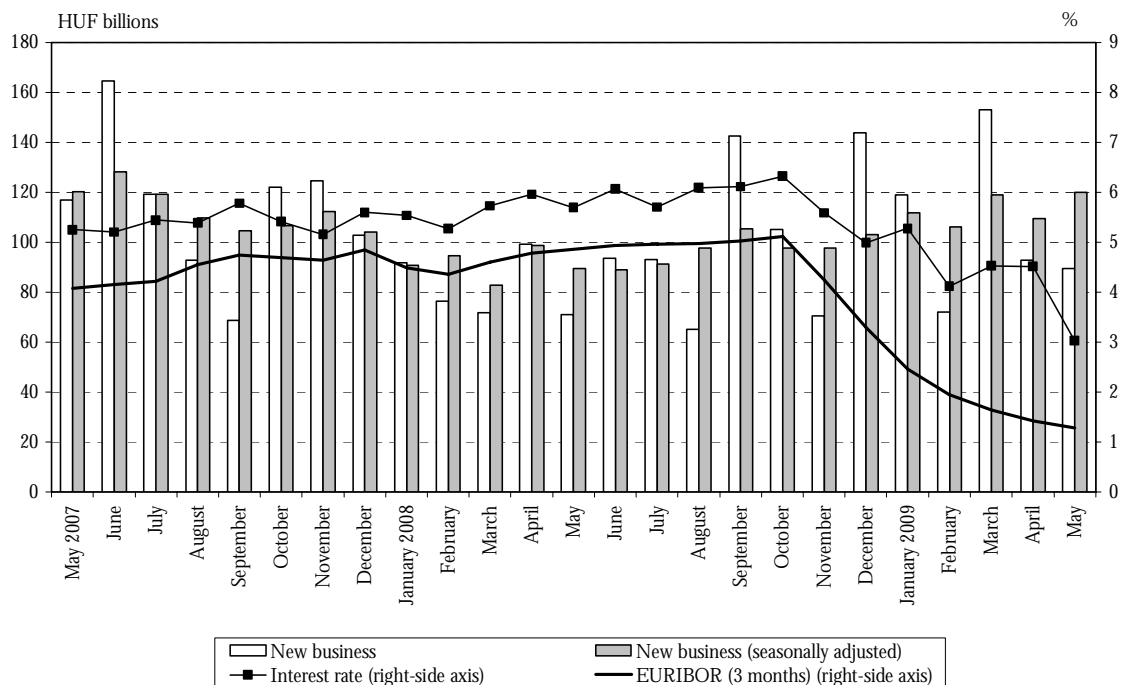


Chart 18 Monthly average interest rate on euro loans to non-financial corporations over the equivalent of EUR 1 million and the total amount of new business¹⁰



¹⁰ Loans with floating interest rates or with up to 1 year initial rate fixation.

Chart 19 Monthly average interest rate on household forint time deposits and the total amount of new business

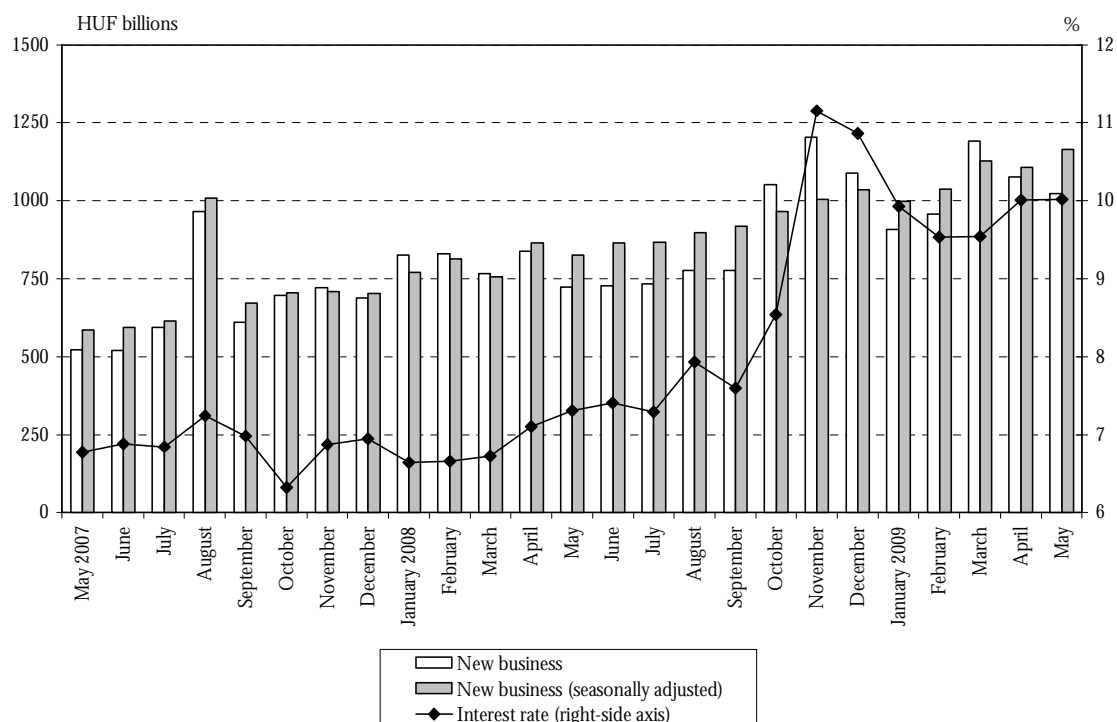


Chart 20 Monthly average interest rate on household euro deposits with an agreed maturity of up to one year and the total amount of new business

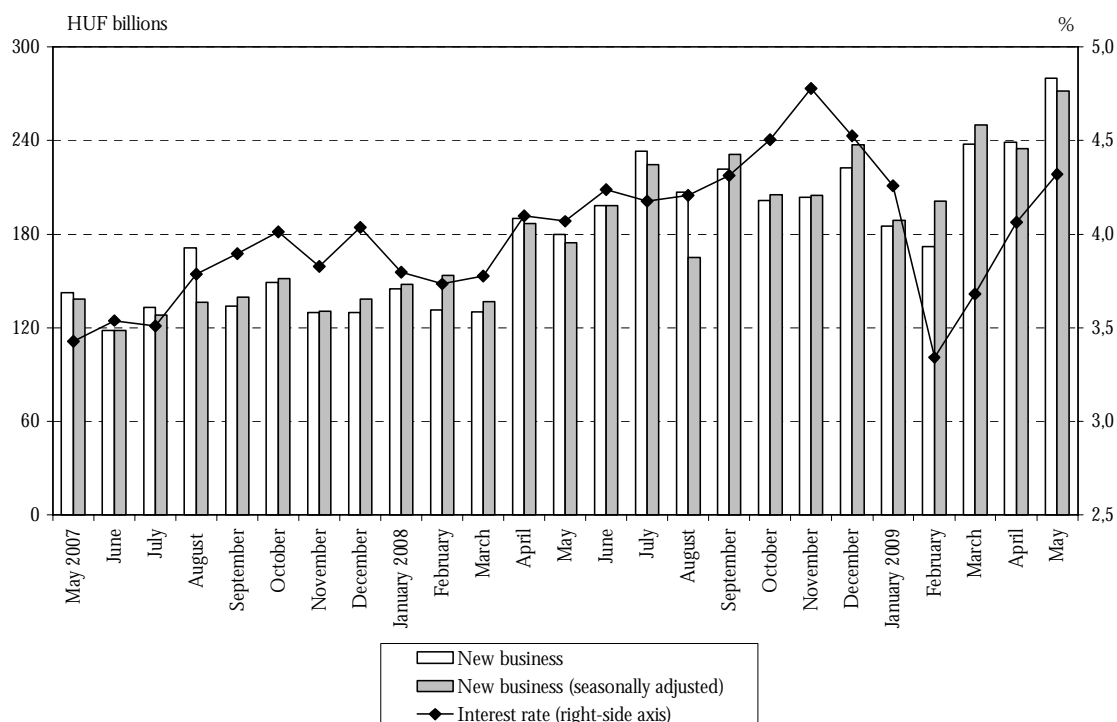


Chart 21 Monthly average interest rates on non-financial corporations' forint deposits and the total amount of new business

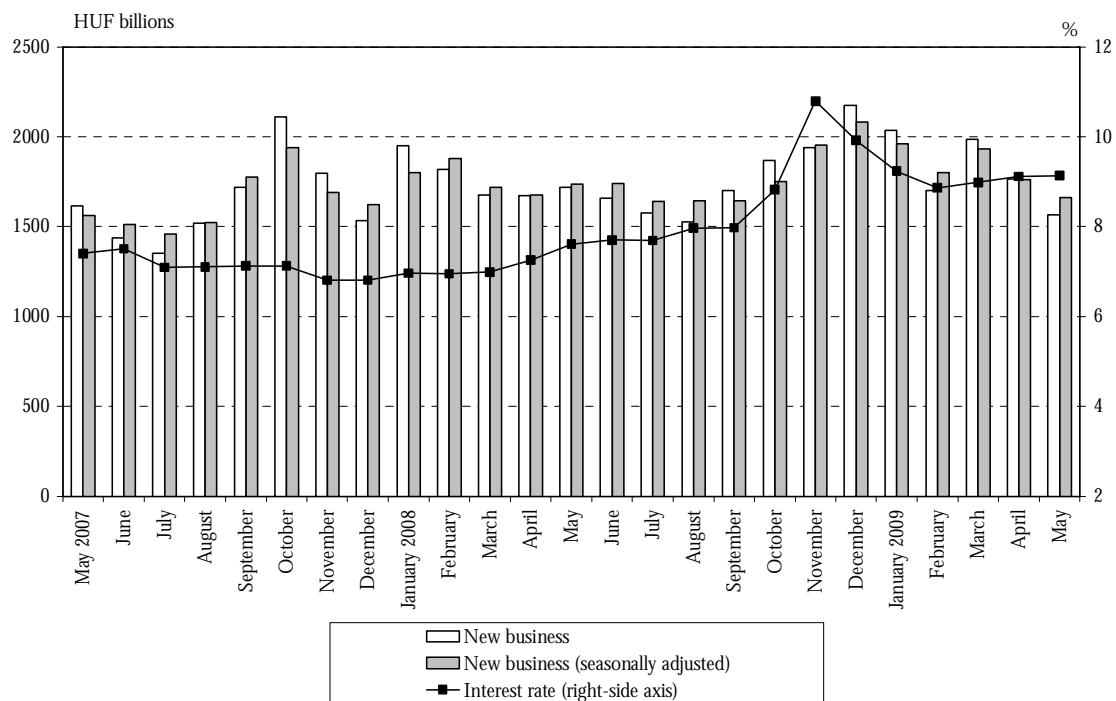


Chart 22 Monthly average interest rates on non-financial corporations' euro deposits with a maturity of up to one year and the total amount of new business

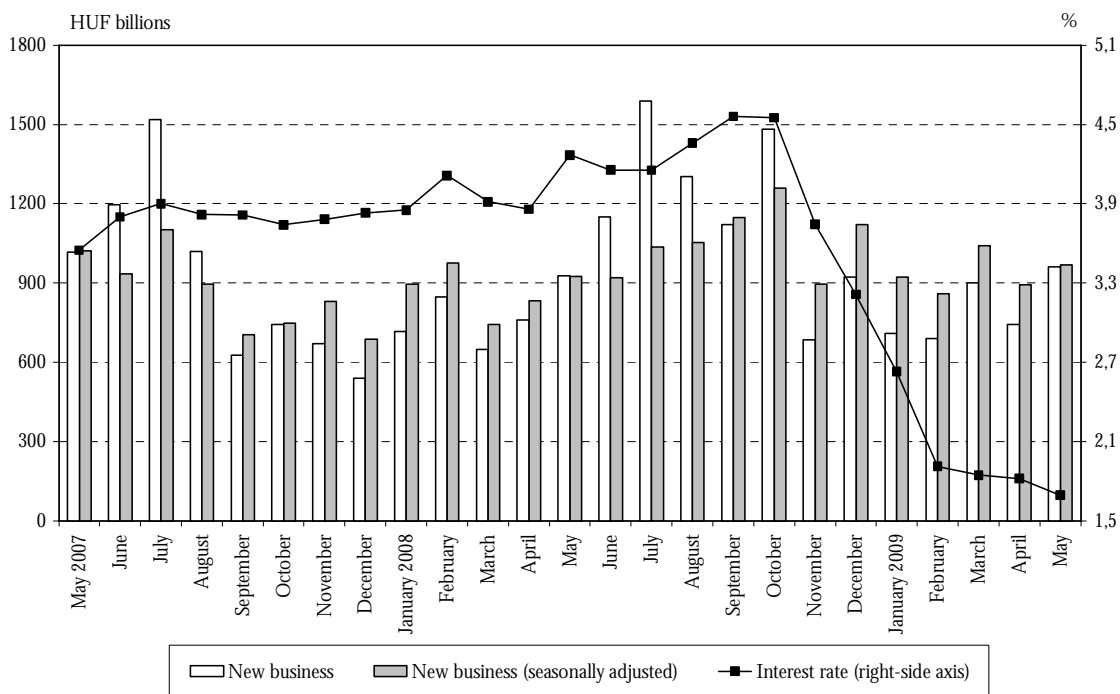


Chart 23 Average overnight interbank rates, total interbank lending and the interest rate corridor

