

Charts to the press release on the aggregated balance sheet of credit institutions
April 2009

Chart 1 Seasonally and exchange rate adjusted net new borrowing by non-financial corporations

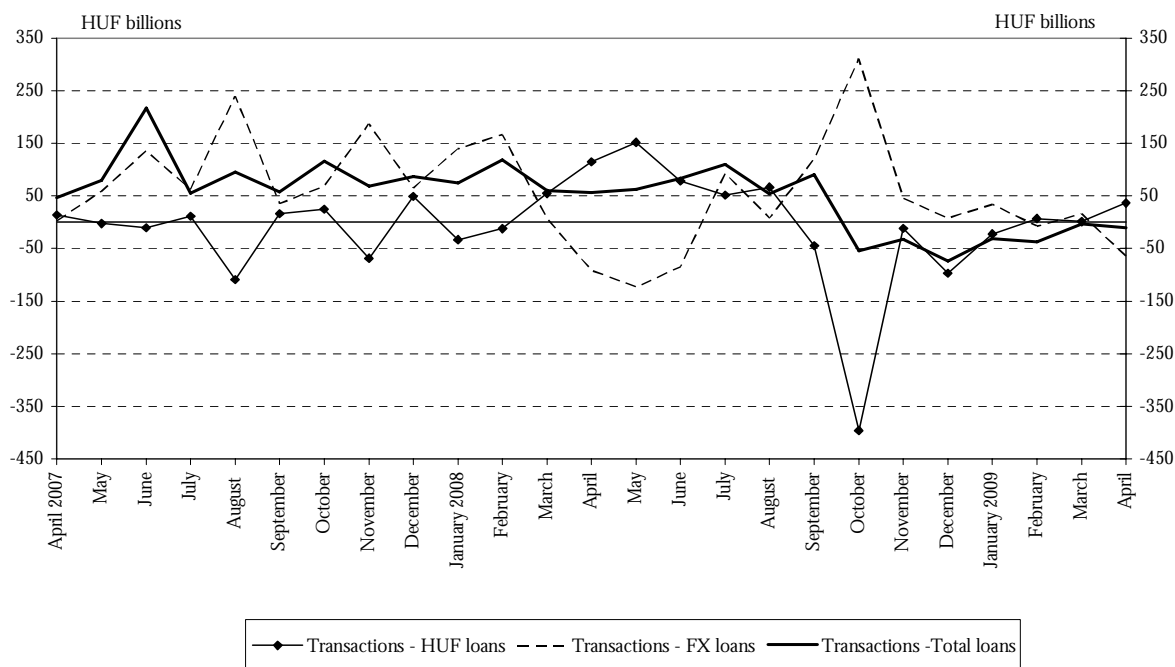
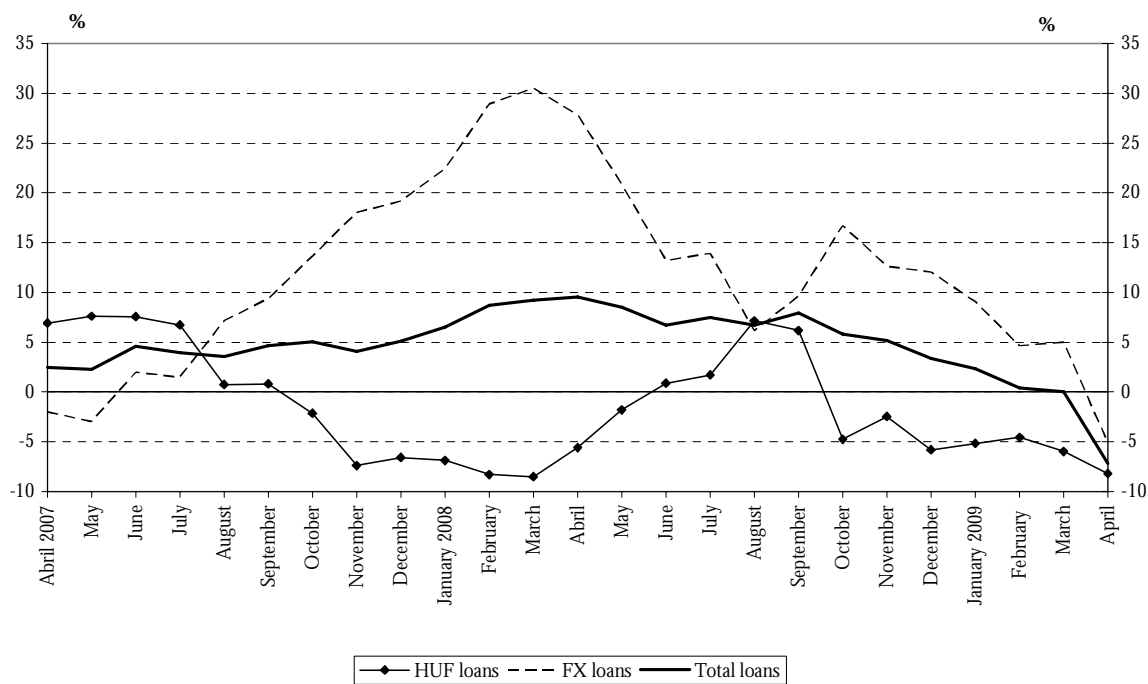


Chart 2 Real growth of non-financial corporations' outstanding borrowing¹



¹ Transactions-based growth rate (see the Methodological notes).

Chart 3 Seasonally and exchange rate adjusted net new borrowing by households

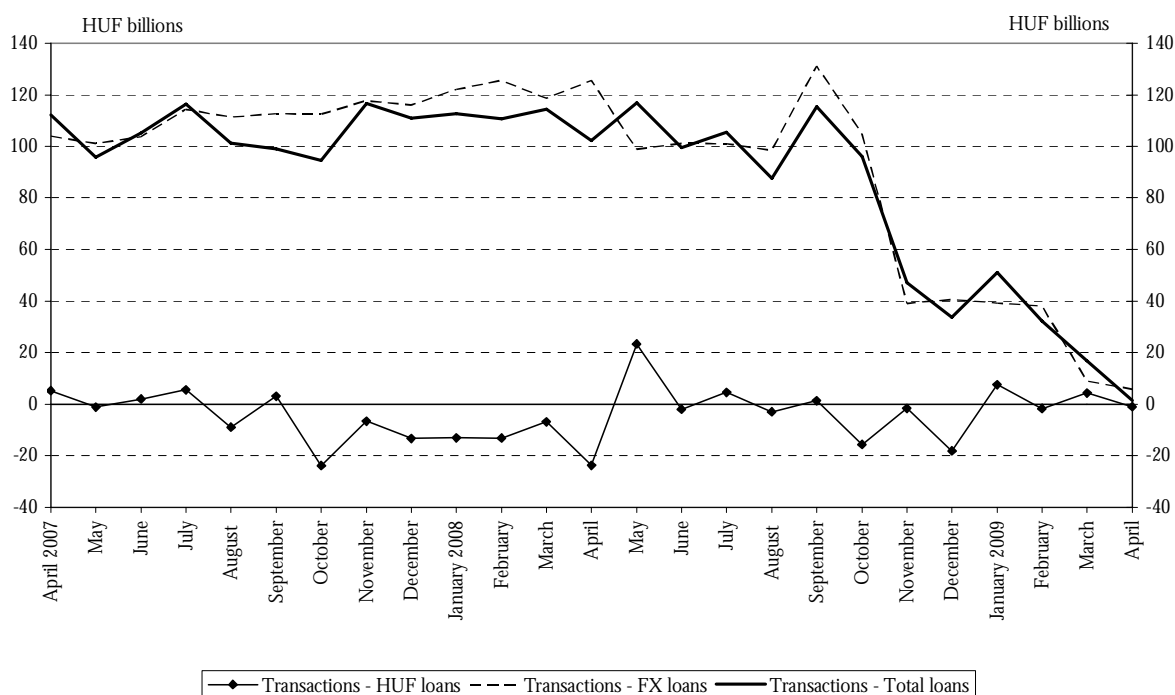
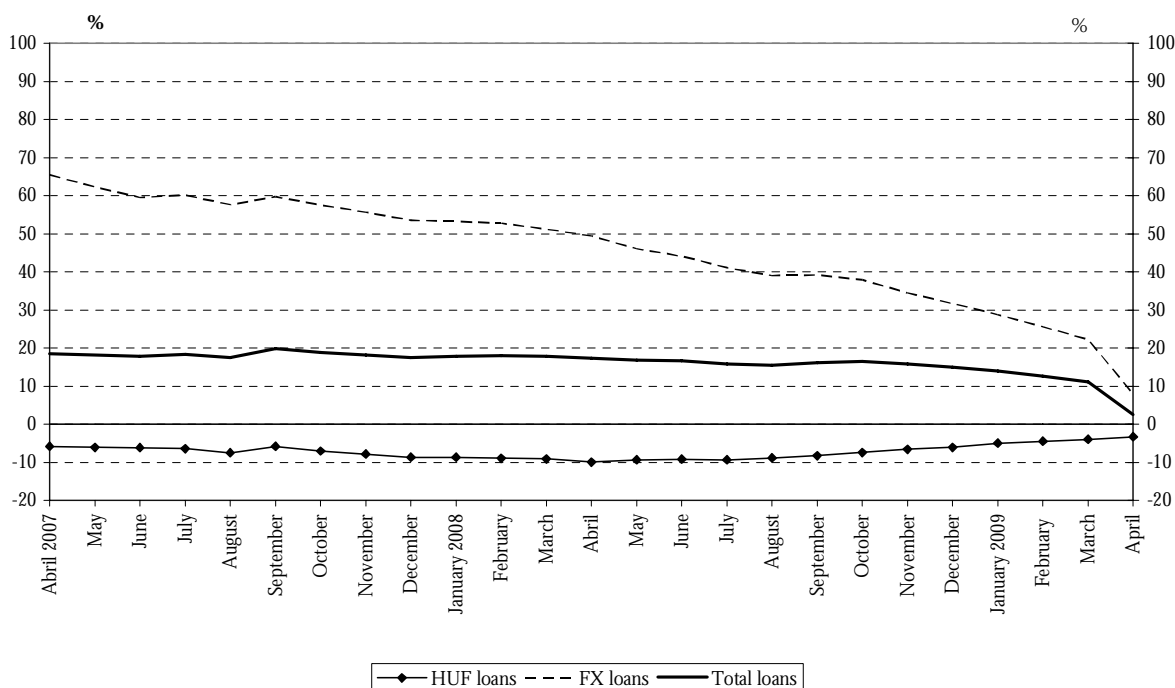


Chart 4 Real growth of households' outstanding borrowing^{2, 3}



² Transactions-based growth rate (see the Methodological notes).

³ For an interpretation of the trend plotted on the chart, see the Methodological notes.

Chart 5 Outstanding forint, euro and Swiss franc-denominated housing loans of households

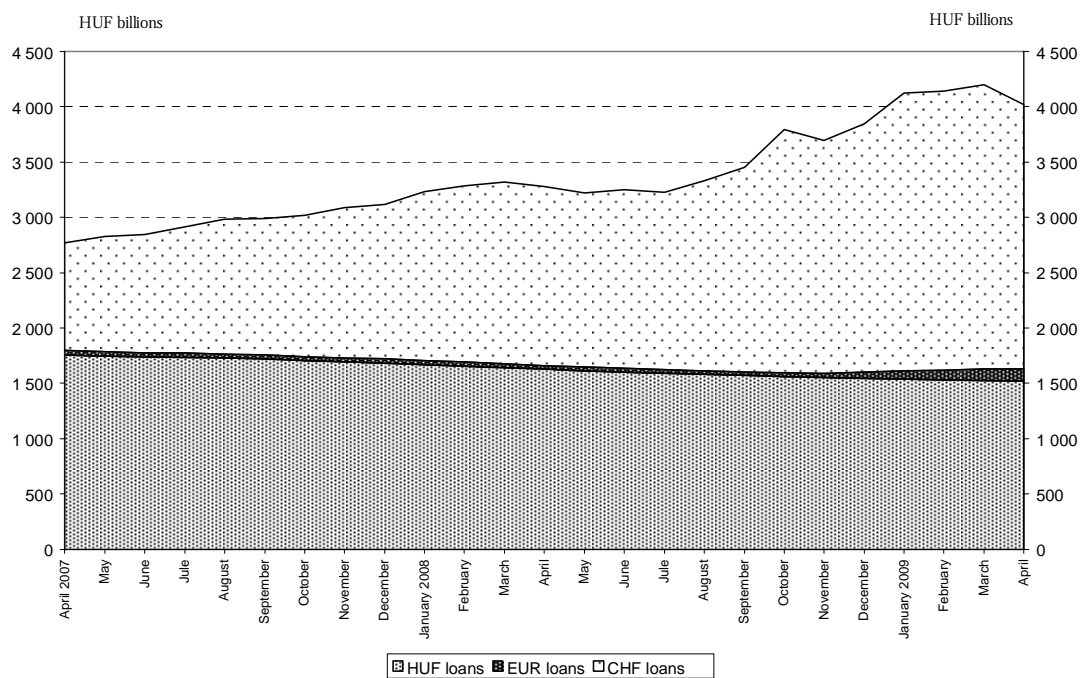


Chart 6 Outstanding forint, euro and Swiss franc-denominated housing loans of households
Calculated at the MNB's middle exchange rates for 30 April 2009

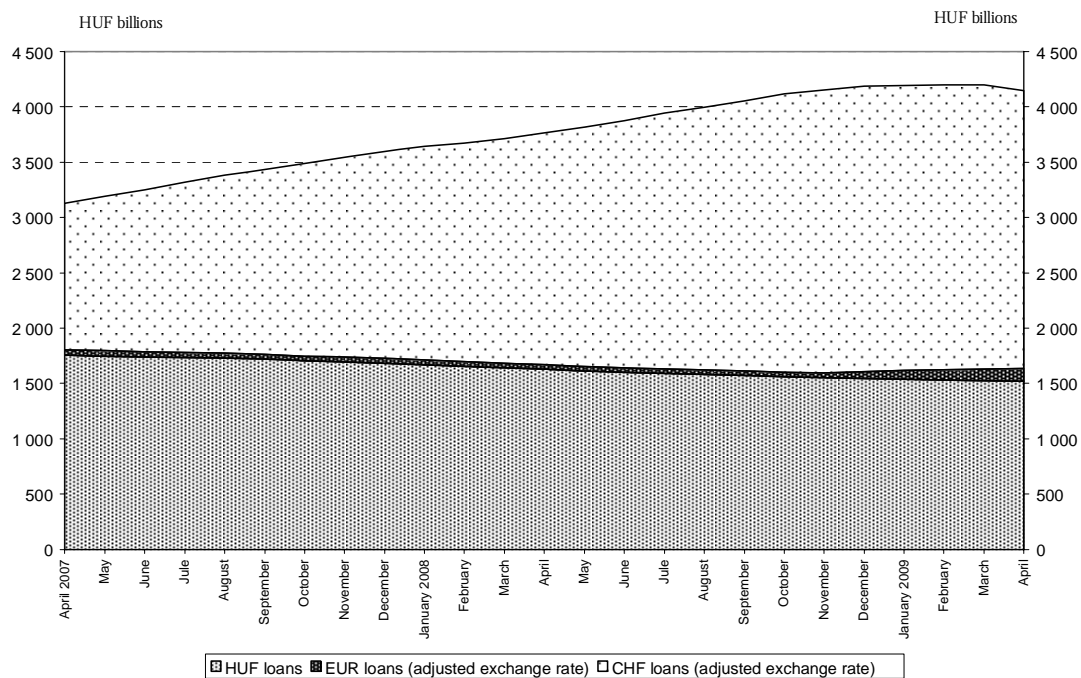


Chart 7 Outstanding forint, euro and Swiss franc-denominated consumer loans of households

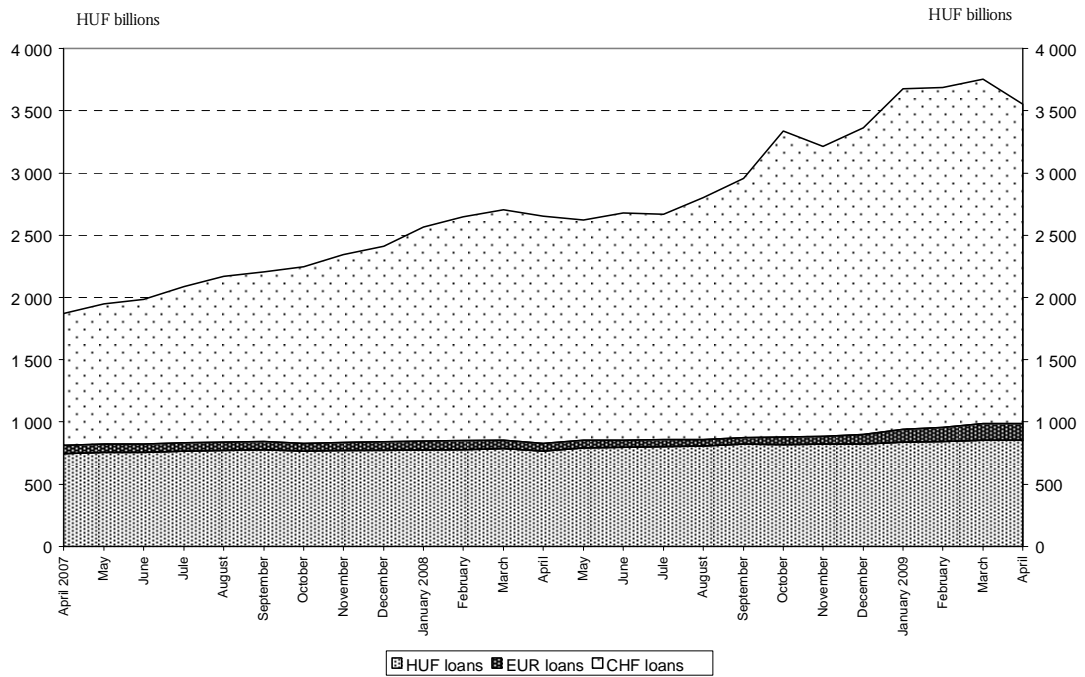


Chart 8 Outstanding forint, euro and Swiss franc-denominated consumer loans of households
 Calculated at the MNB's middle exchange rates for 30 April 2009

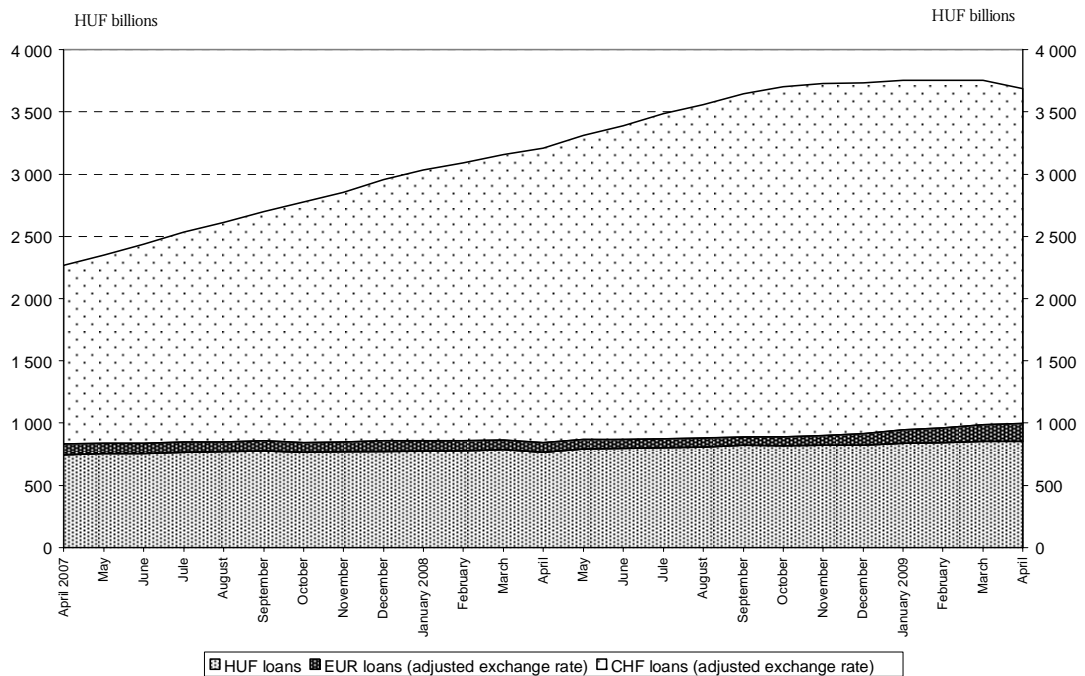


Chart 9 Outstanding forint, euro and Swiss franc-denominated other loans of households

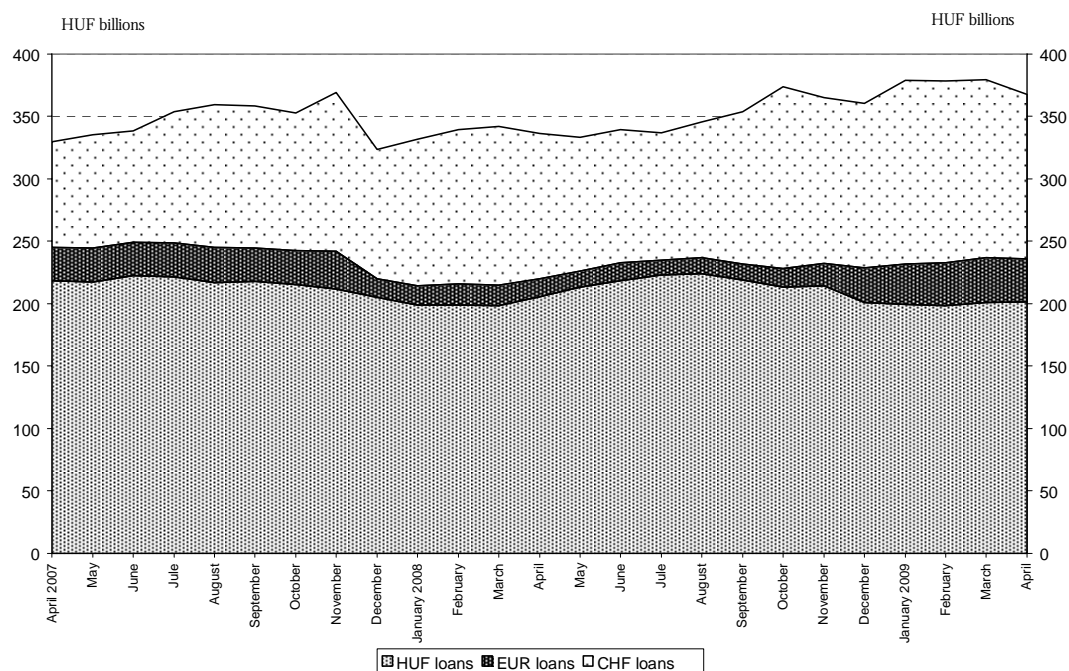


Chart 10 Outstanding forint, euro and Swiss franc-denominated other loans of households
Calculated at the MNB's middle exchange rates for 30 April 2009

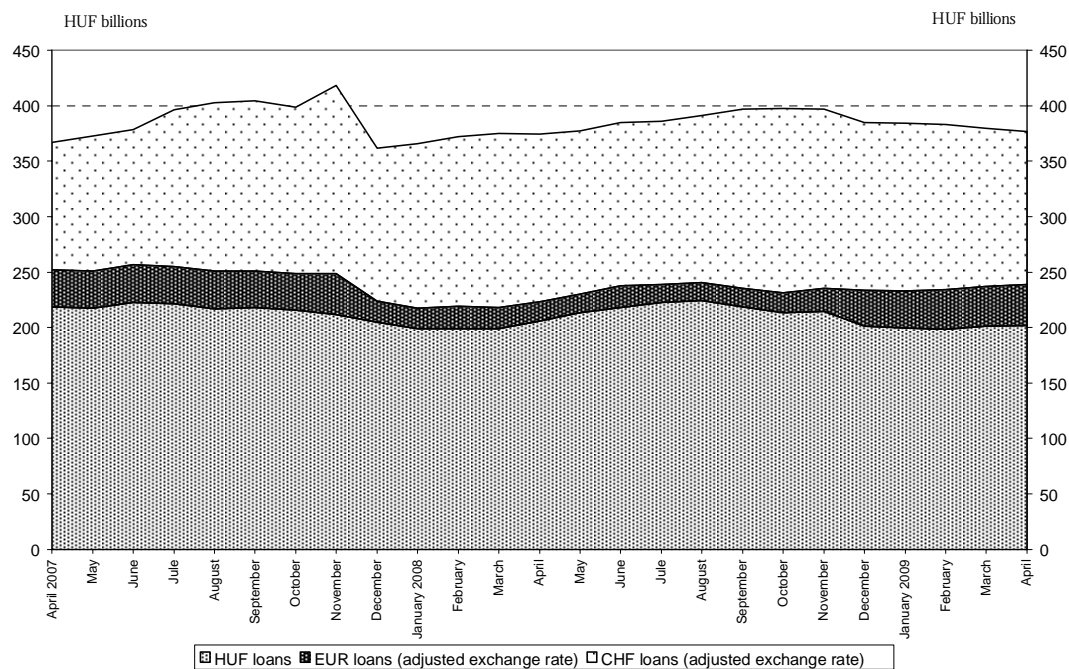


Chart 11 Percentage shares of foreign currency loans within the various categories of household loans

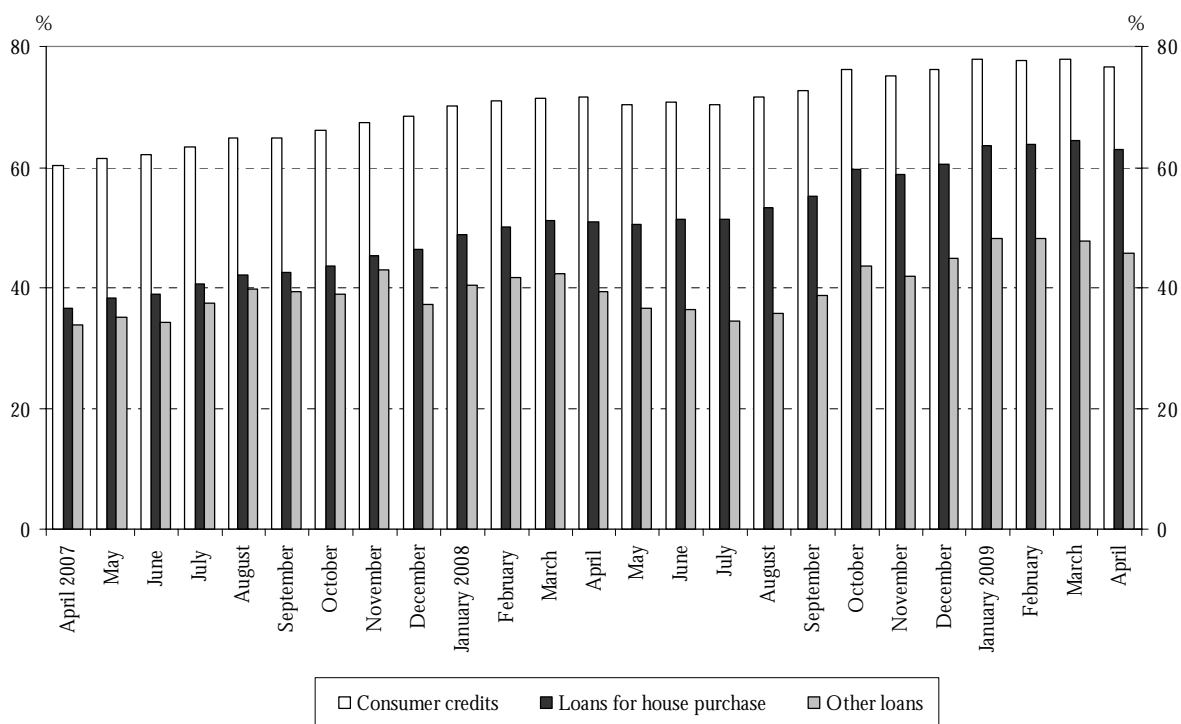


Chart 12 Seasonally and exchange rate adjusted net new deposits of non-financial corporations

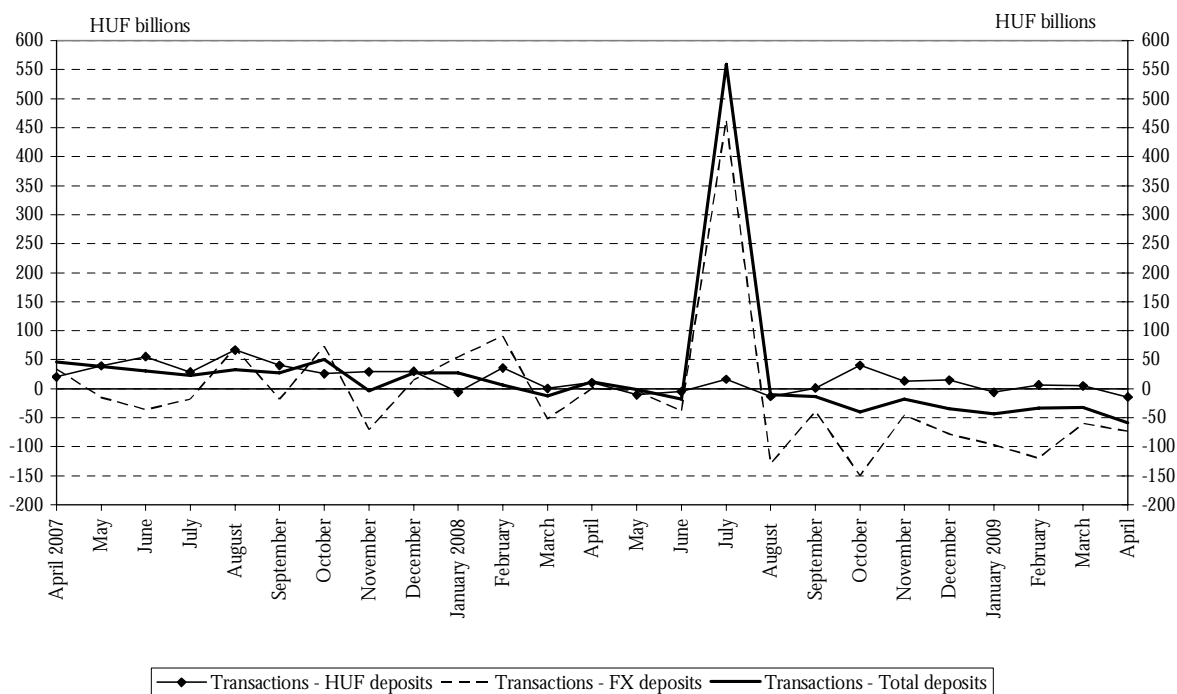


Chart 13 Real growth of non-financial corporations' deposits⁴

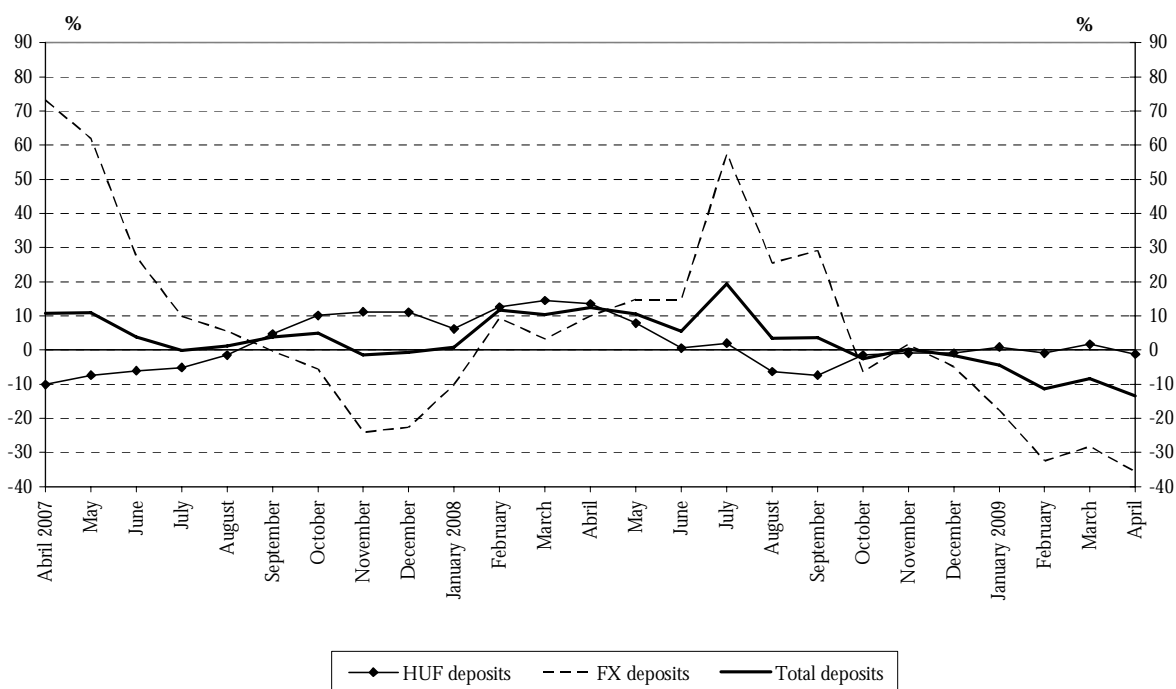
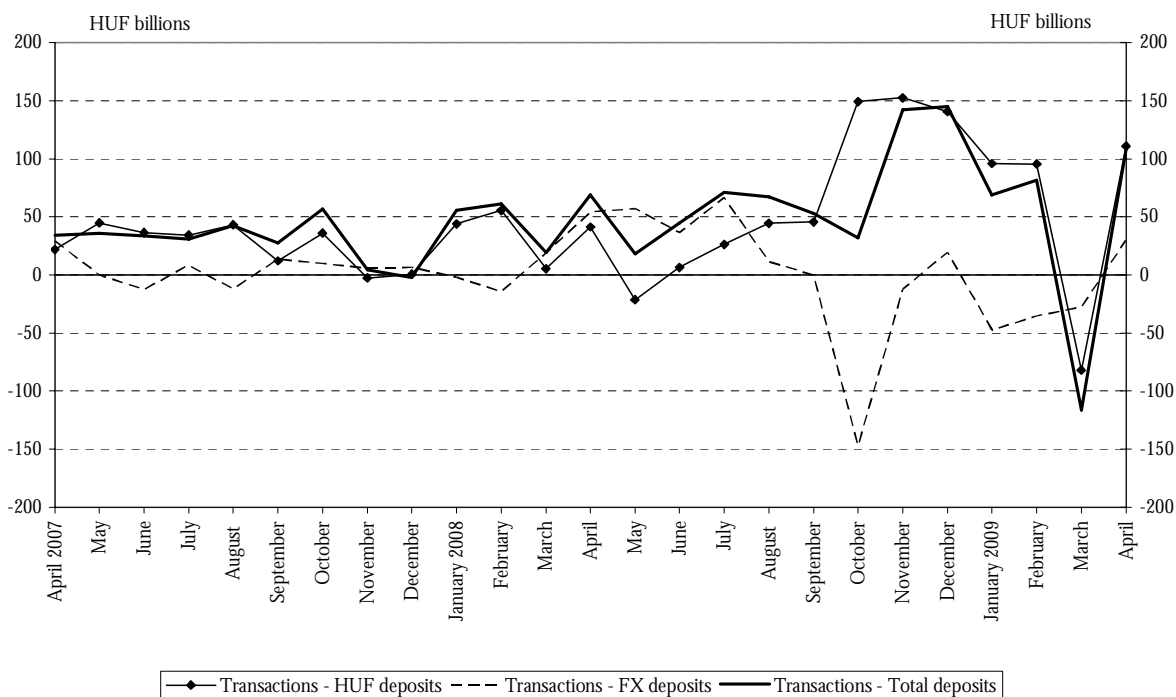


Chart 14 Seasonally and exchange rate adjusted net new deposits of households



⁴ Transactions-based growth rate (see the Methodological notes).

Chart 15 Real growth of household deposits⁵

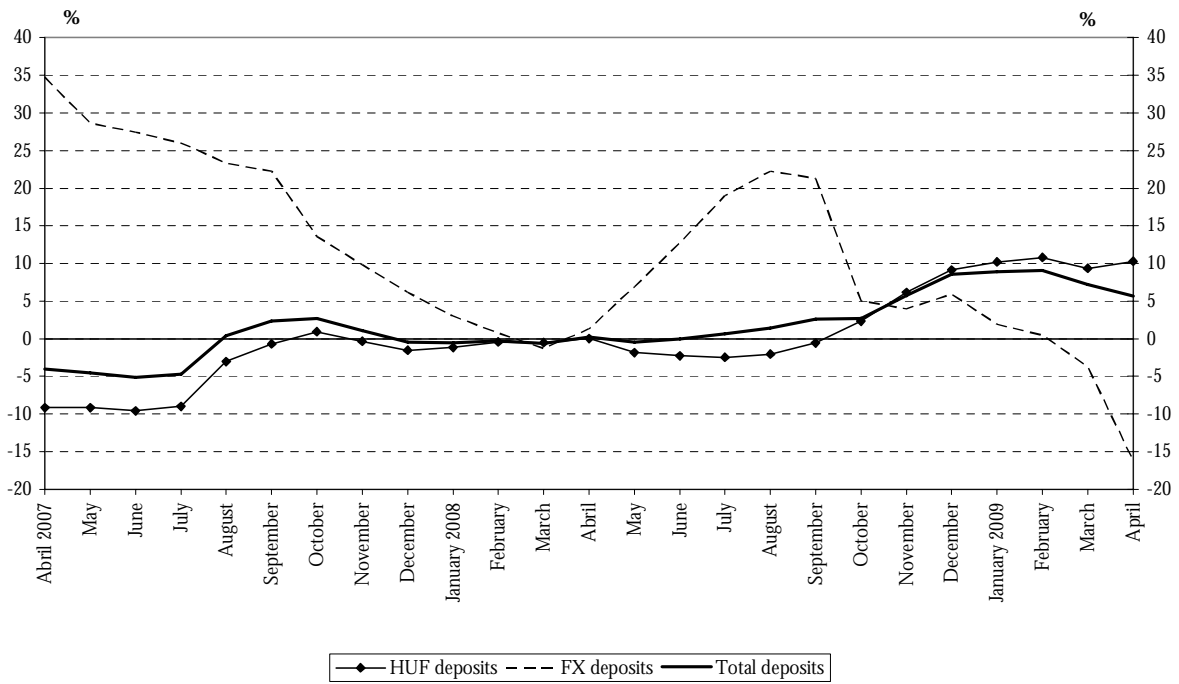


Chart 16 Real growth of the monetary aggregates⁵

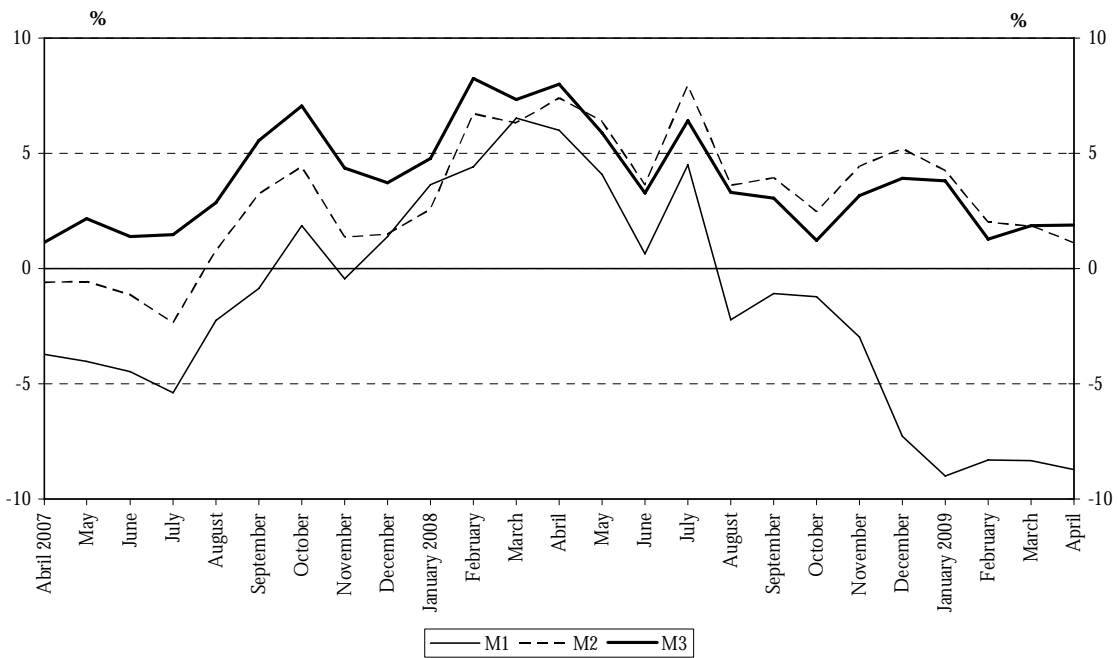


Chart 17 Seasonally adjusted M1

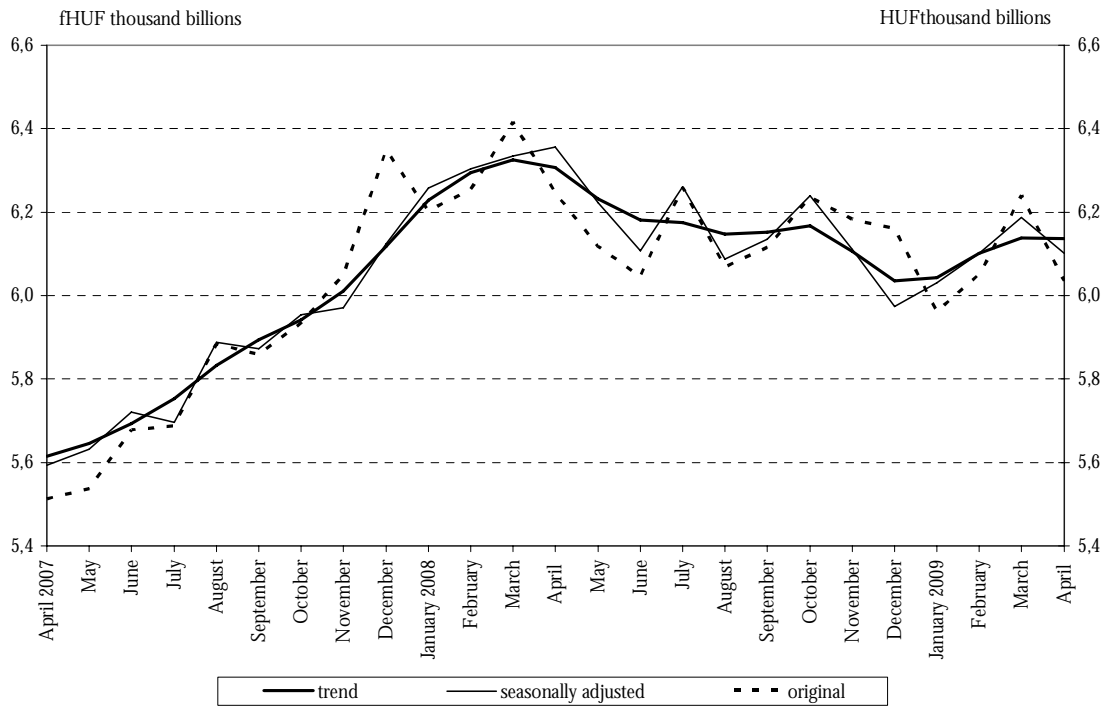


Chart 18 Seasonally adjusted M2

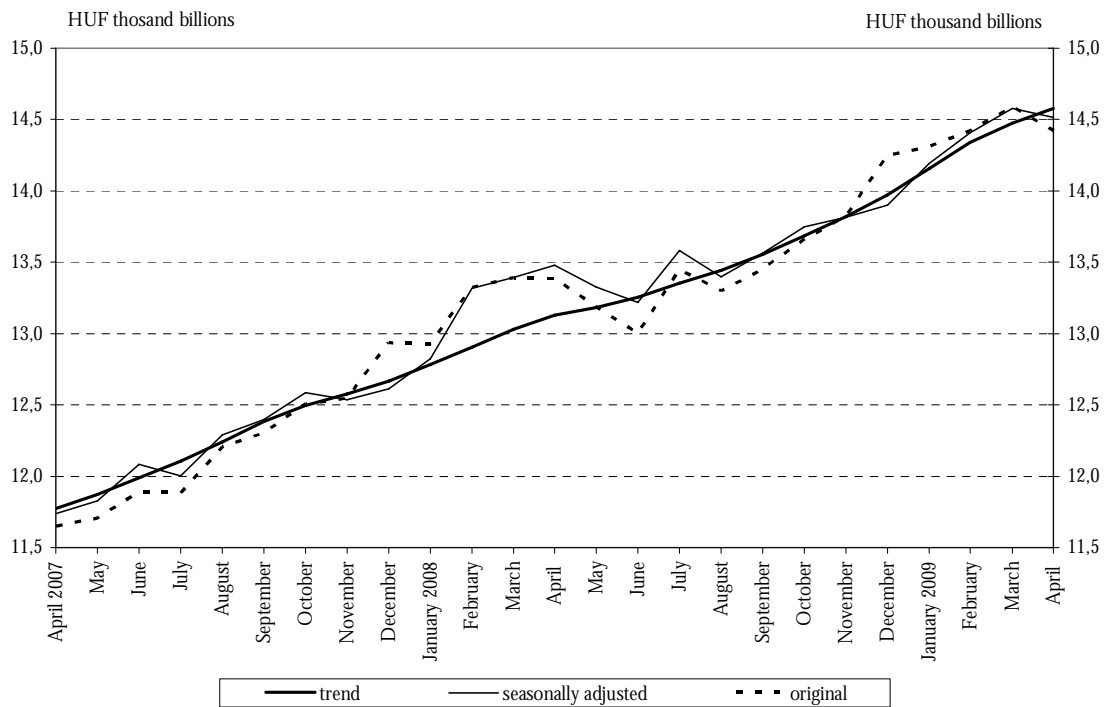


Chart 19 Seasonally adjusted M3

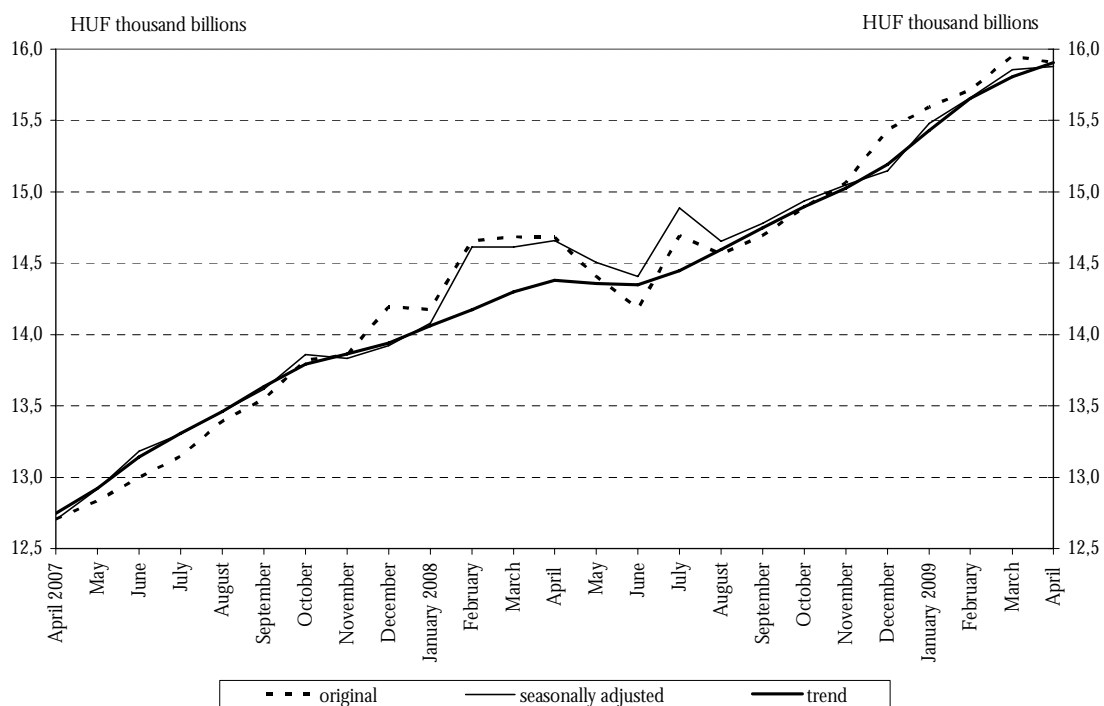


Chart 20 Total foreign exposure of credit institutions

