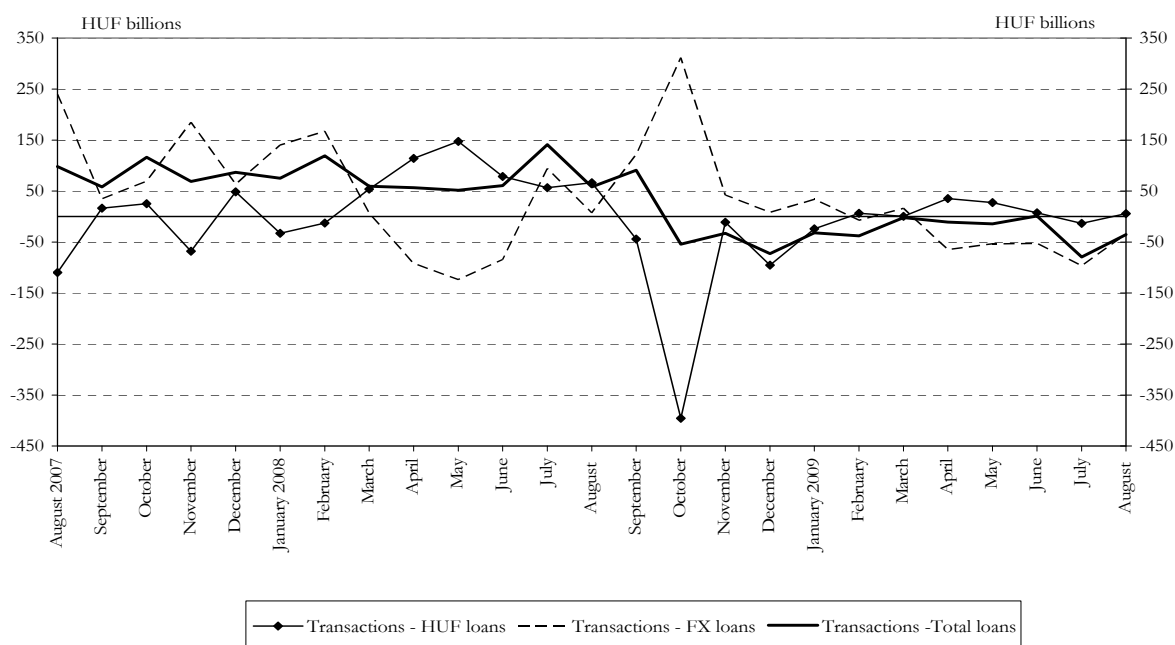


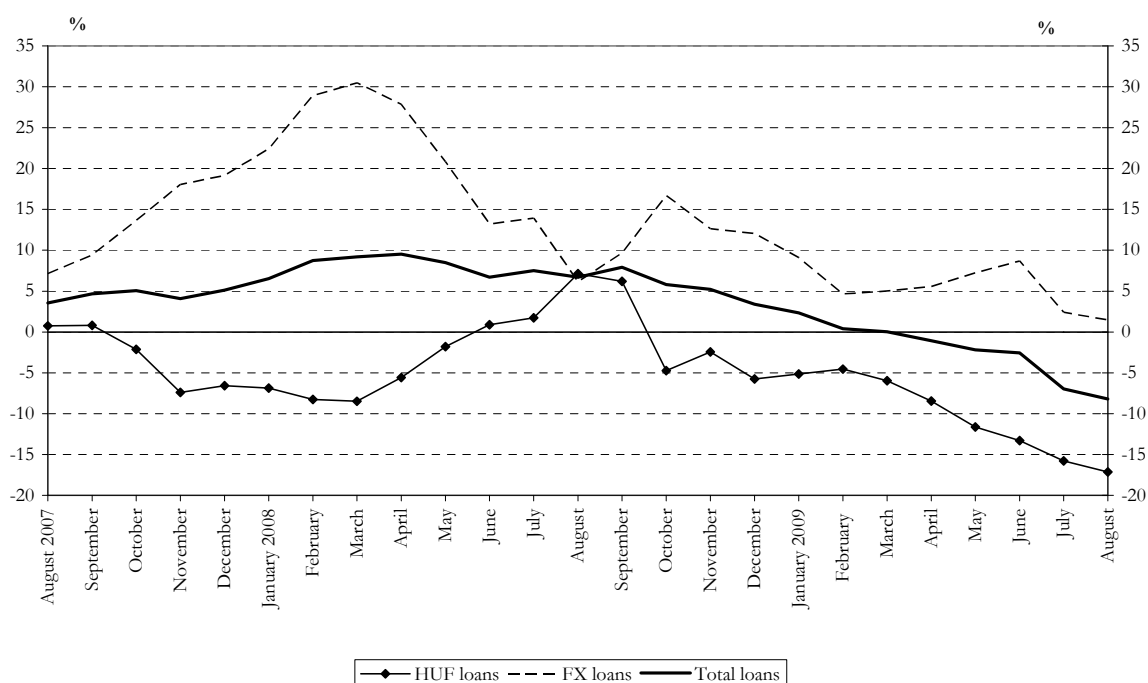
# Charts to the press release on the aggregated balance sheet of credit institutions

August 2009

**Chart 1 Seasonally and exchange rate adjusted net new borrowing by non-financial corporations<sup>1</sup>**



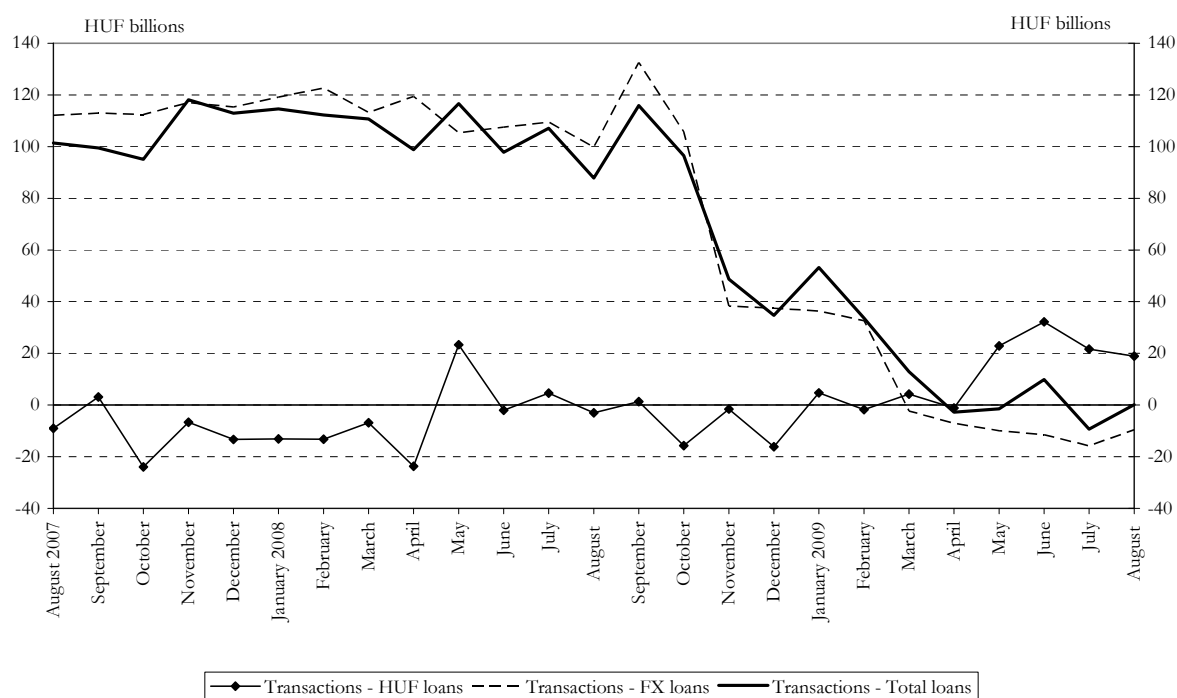
**Chart 2 Real growth of non-financial corporations' outstanding borrowing<sup>2</sup>**



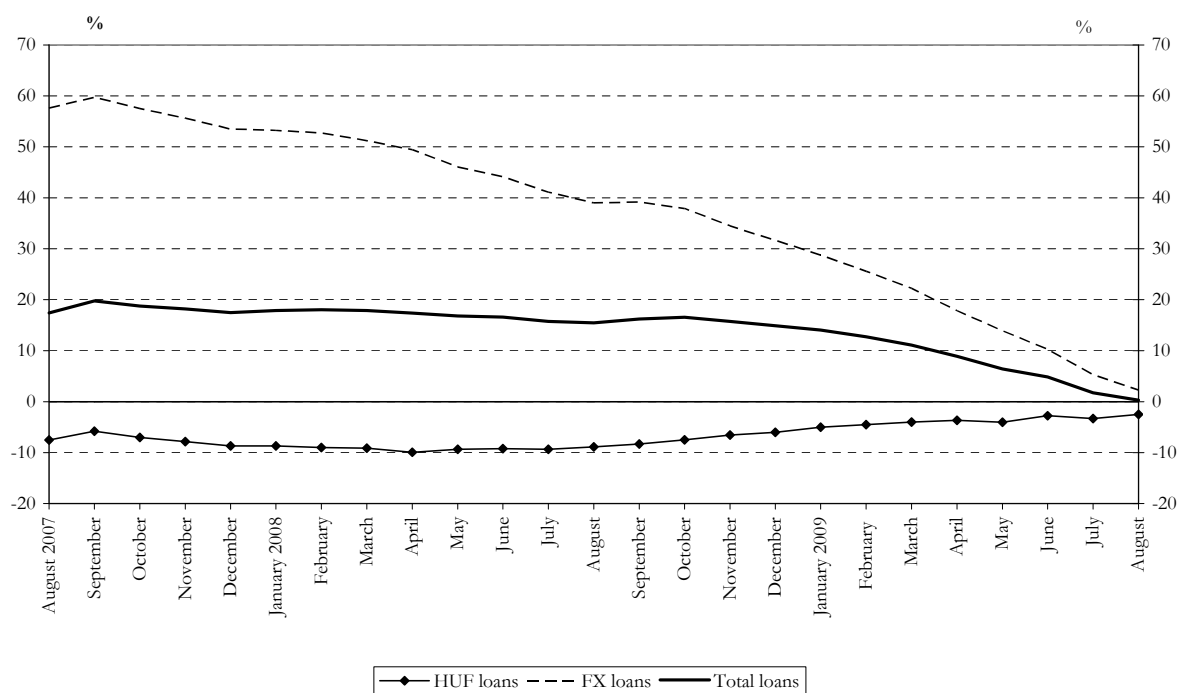
<sup>1</sup> The Methodological notes provide guidance on the correct interpretation of the seasonally adjusted series for 'total loans'.

<sup>2</sup> Transactions-based growth rate (see the Methodological notes).

**Chart 3 Seasonally and exchange rate adjusted net new borrowing by households<sup>3</sup>**



**Chart 4 Real growth of households' outstanding borrowing<sup>4, 5</sup>**

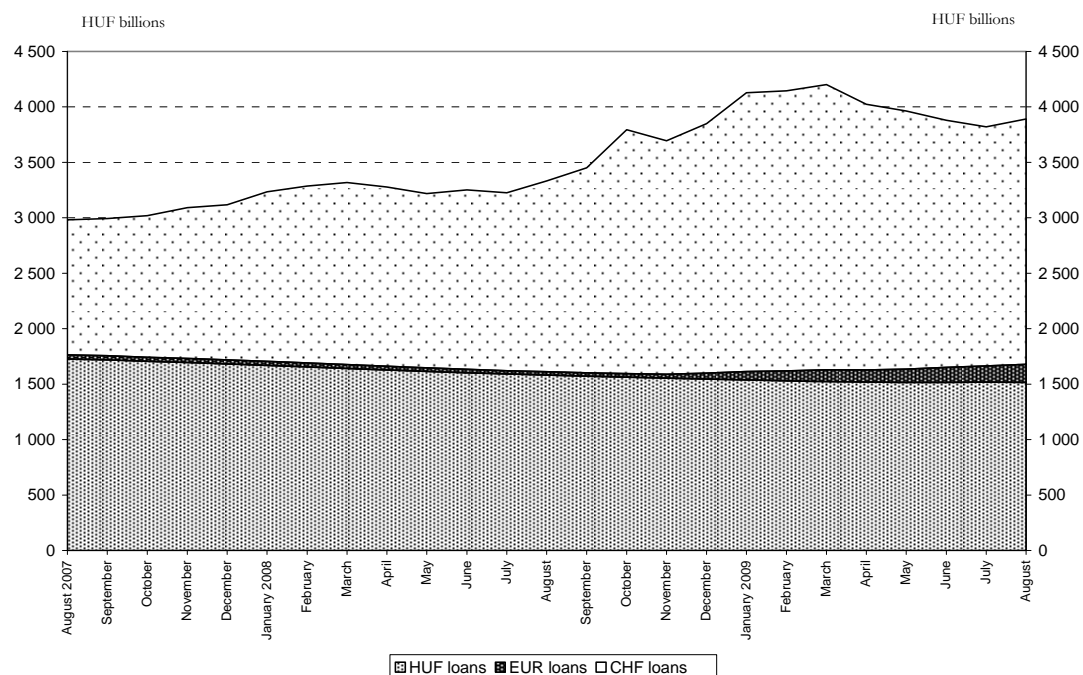


<sup>3</sup> The Methodological notes provide guidance on the correct interpretation of the seasonally adjusted series for 'total loans'.

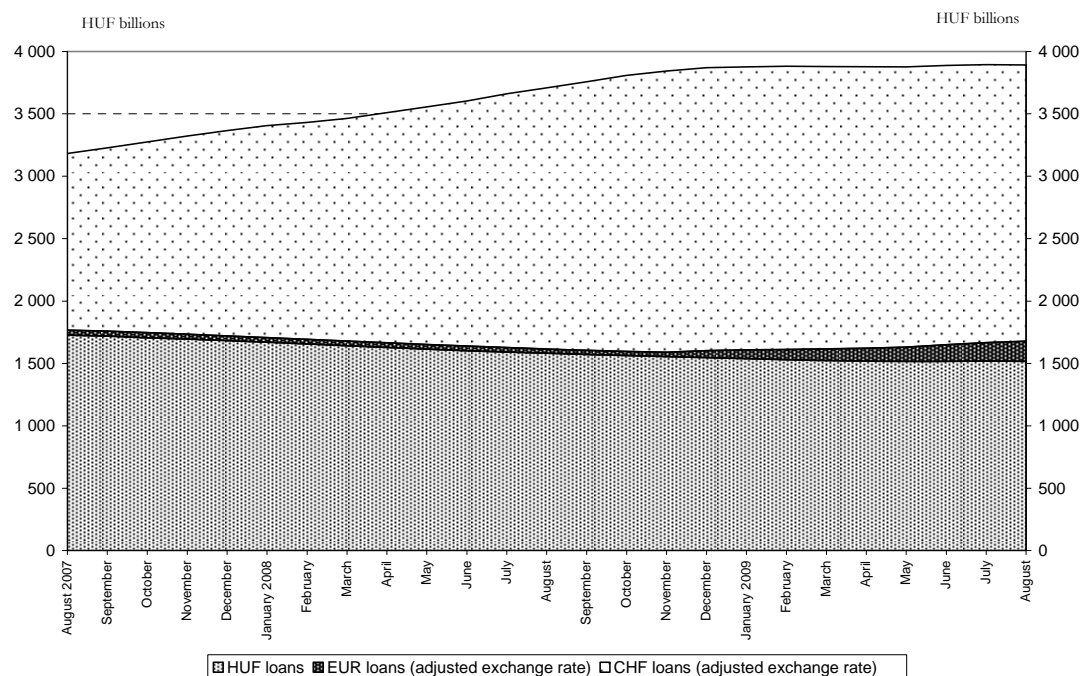
<sup>4</sup> Transactions-based growth rate (see the Methodological notes).

<sup>5</sup> For an interpretation of the trend plotted on the chart, see the Methodological notes.

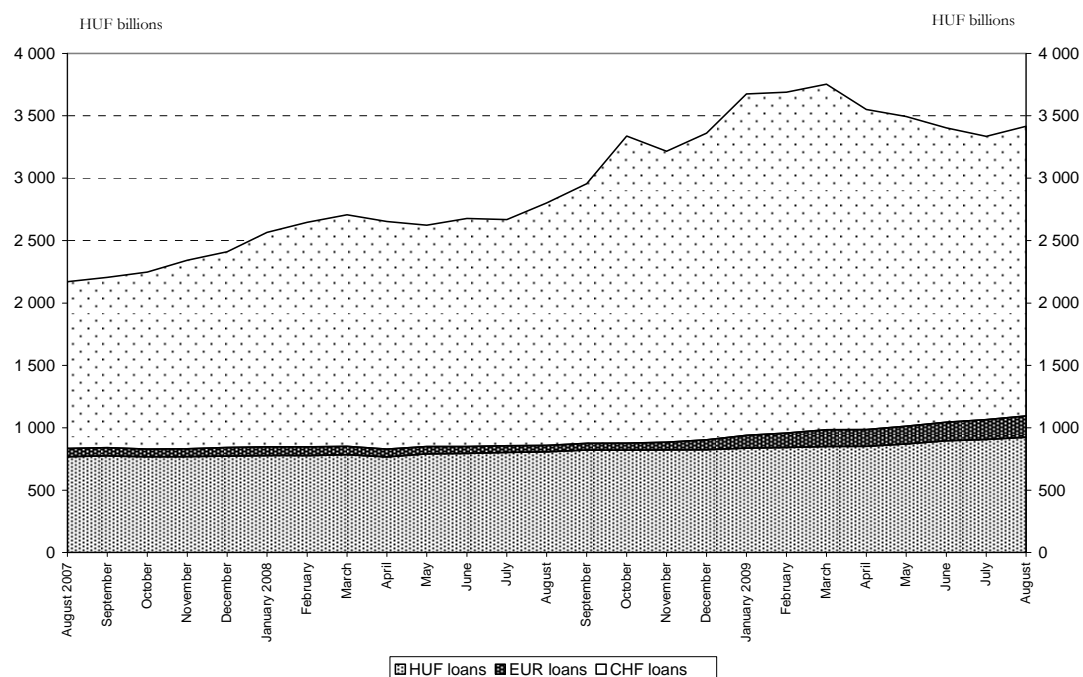
**Chart 5 Outstanding forint, euro and Swiss franc-denominated housing loans of households**  
Foreign currency data are calculated at the MNB's current middle exchange rates



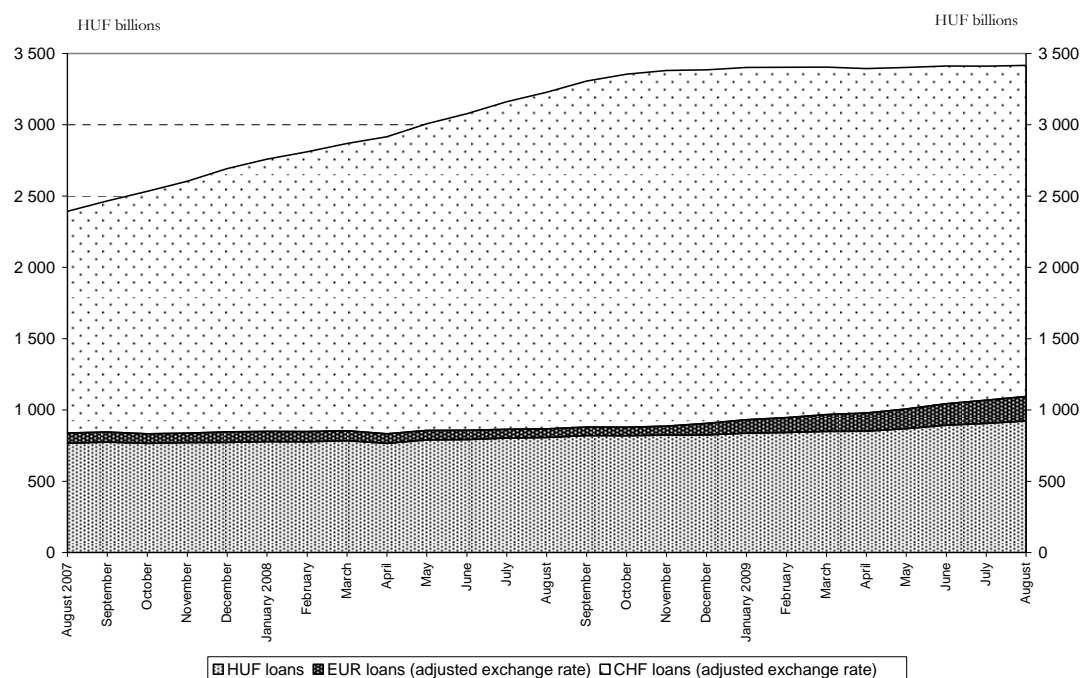
**Chart 6 Outstanding forint, euro and Swiss franc-denominated housing loans of households**  
Calculated at the MNB's middle exchange rates for 31 August 2009



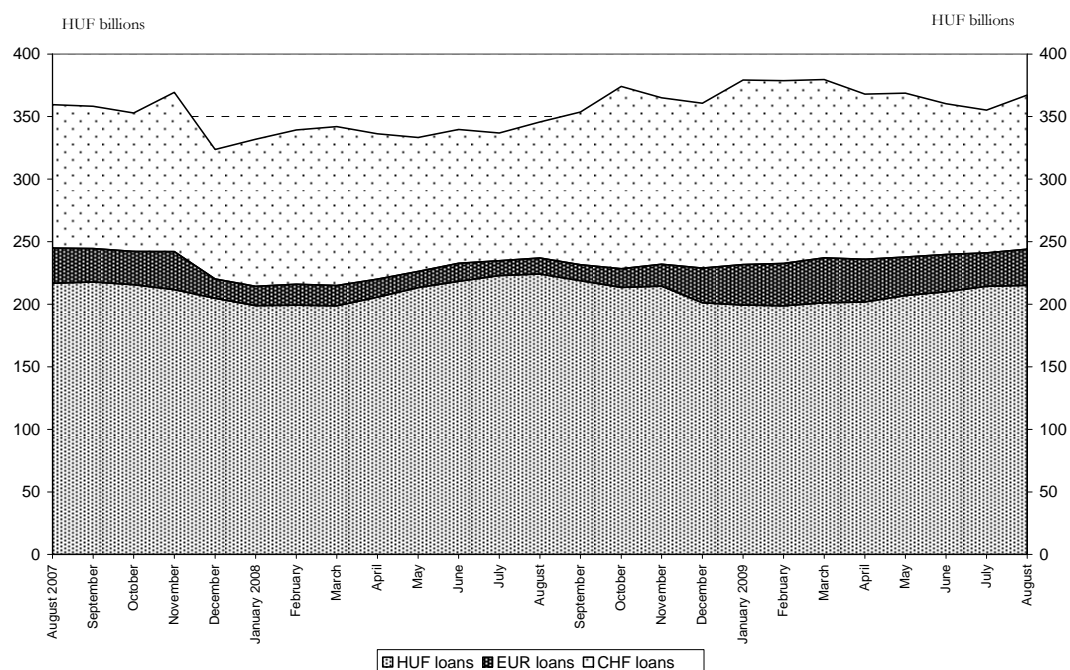
**Chart 7 Outstanding forint, euro and Swiss franc-denominated consumer loans of households**  
Foreign currency data are calculated at the MNB's current middle exchange rates



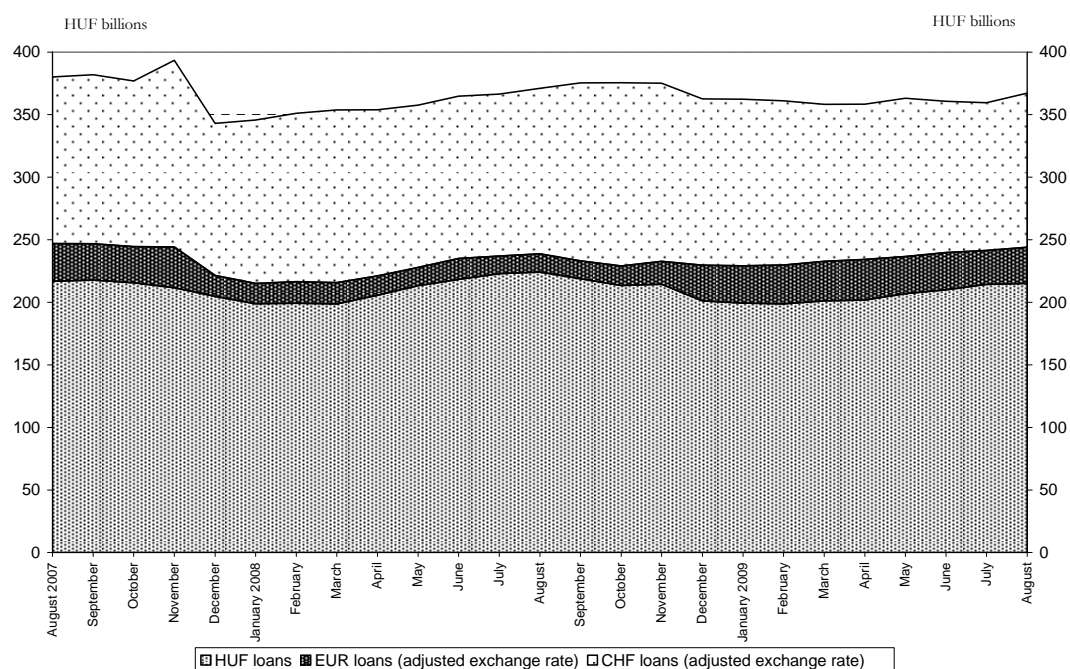
**Chart 8 Outstanding forint, euro and Swiss franc-denominated consumer loans of households**  
Calculated at the MNB's middle exchange rates for 31 August 2009



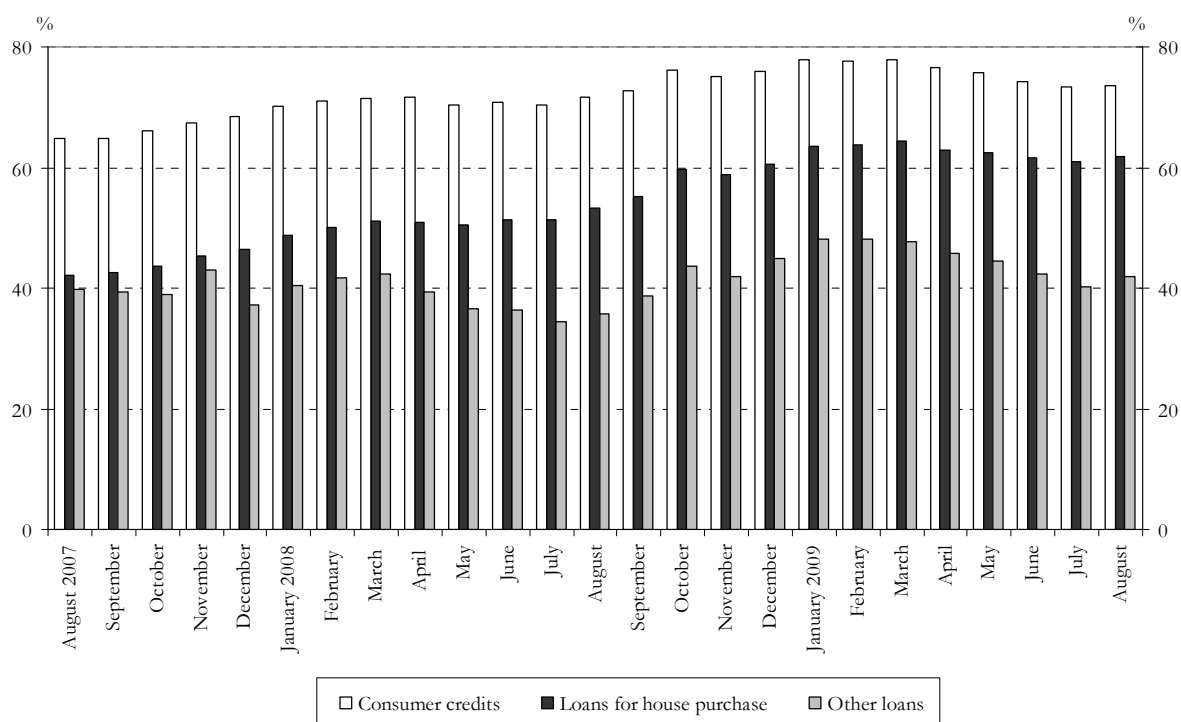
**Chart 9 Outstanding forint, euro and Swiss franc-denominated other loans of households**  
Foreign currency data are calculated at the MNB's current middle exchange rates



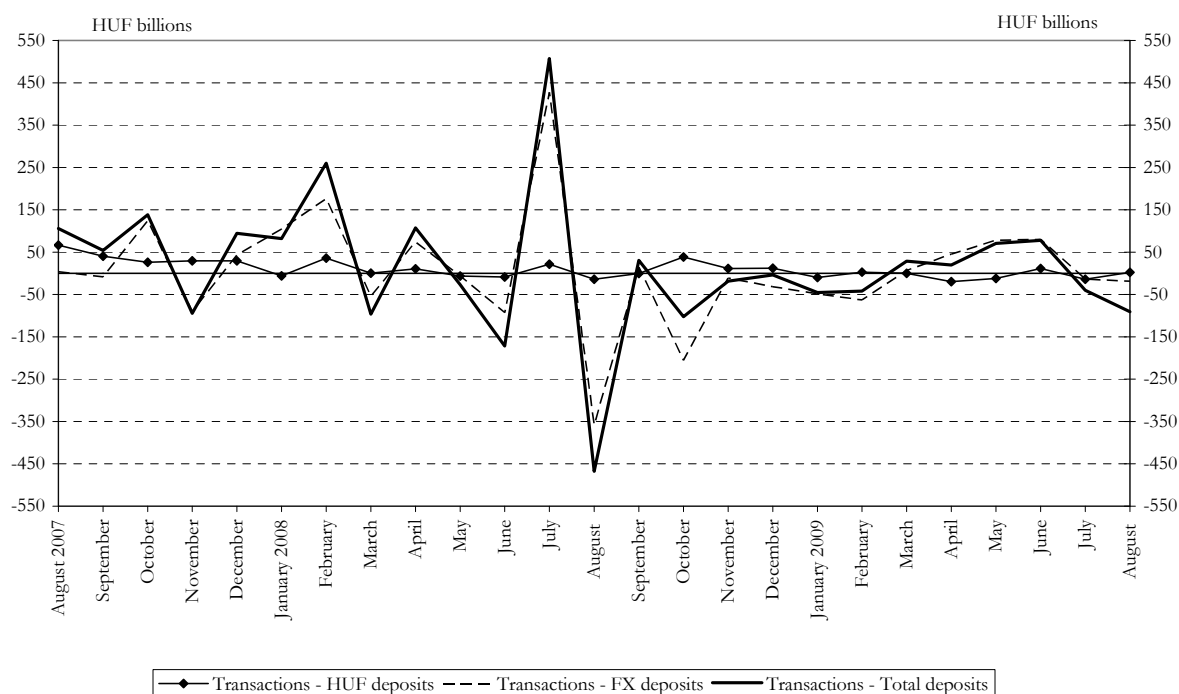
**Chart 10 Outstanding forint, euro and Swiss franc-denominated other loans of households**  
Calculated at the MNB's middle exchange rates for 31 August 2009



**Chart 11 Percentage shares of foreign currency loans within the individual categories of household loans**



**Chart 12 Seasonally and exchange rate adjusted net new deposits of non-financial corporations<sup>6</sup>**



<sup>6</sup> The Methodological notes provide guidance on the correct interpretation of the seasonally adjusted series for 'total deposits'.

Chart 13 Real growth of non-financial corporations' deposits<sup>7</sup>

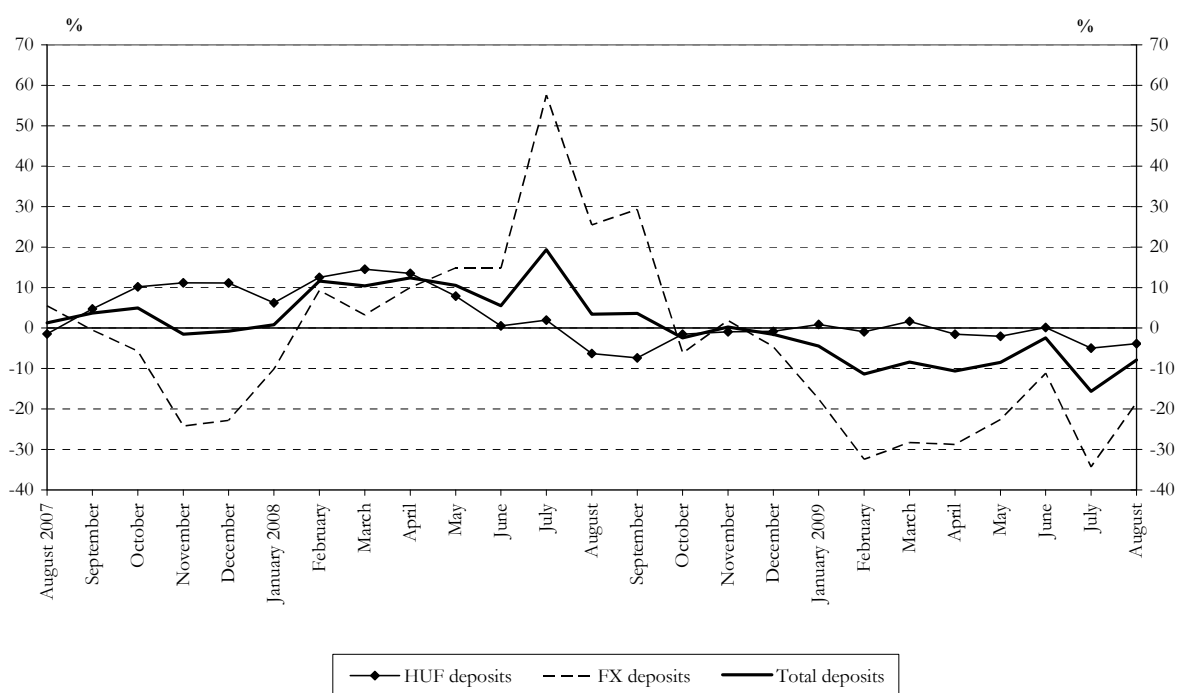
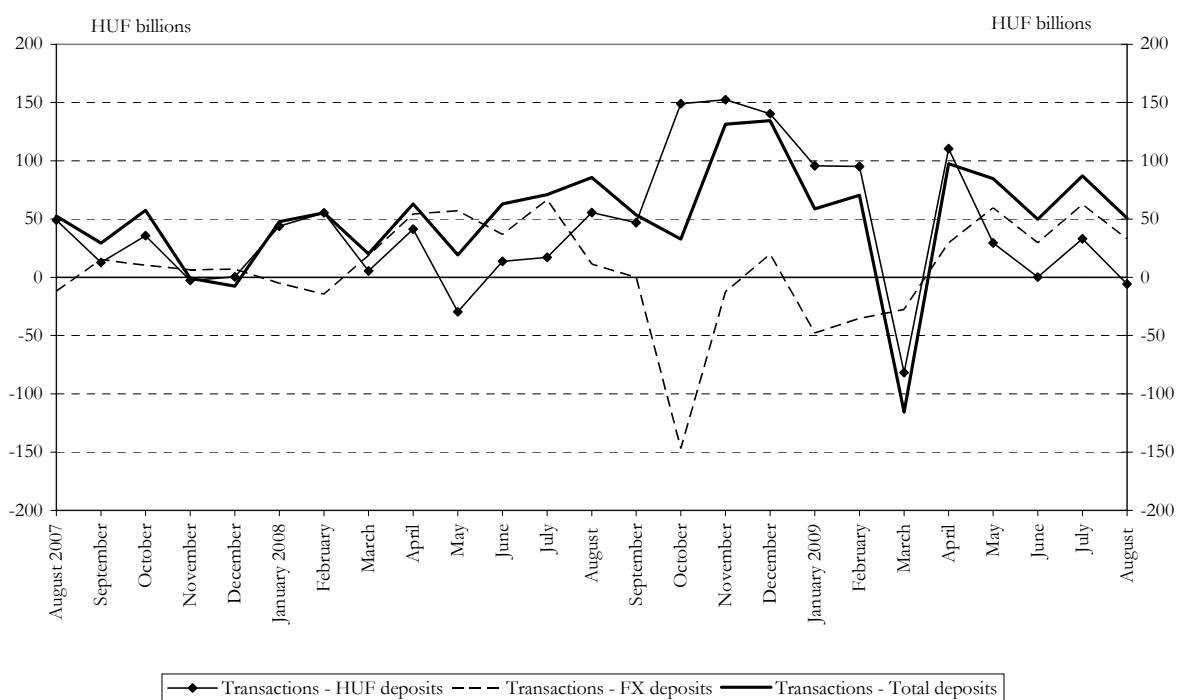


Chart 14 Seasonally and exchange rate adjusted net new deposits of households<sup>8</sup>



<sup>7</sup> Transactions-based growth rate (see the Methodological notes).

<sup>8</sup> The Methodological notes provide guidance on the correct interpretation of the seasonally adjusted series for 'total deposits'.

Chart 15 Real growth of household deposits<sup>5</sup>

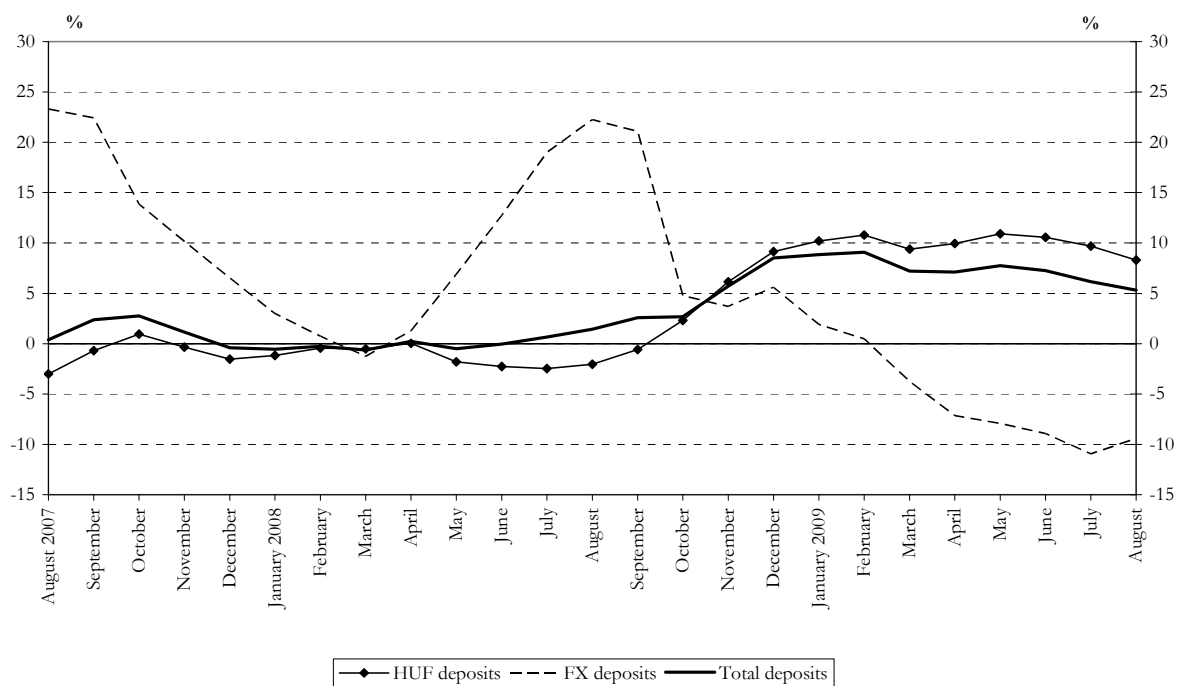
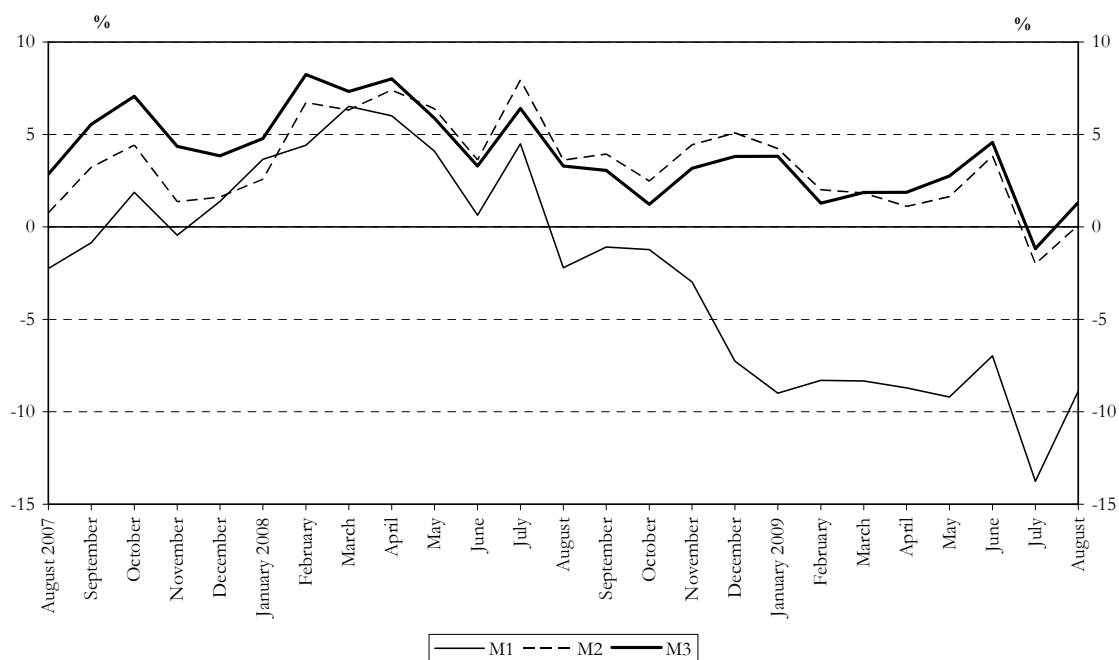
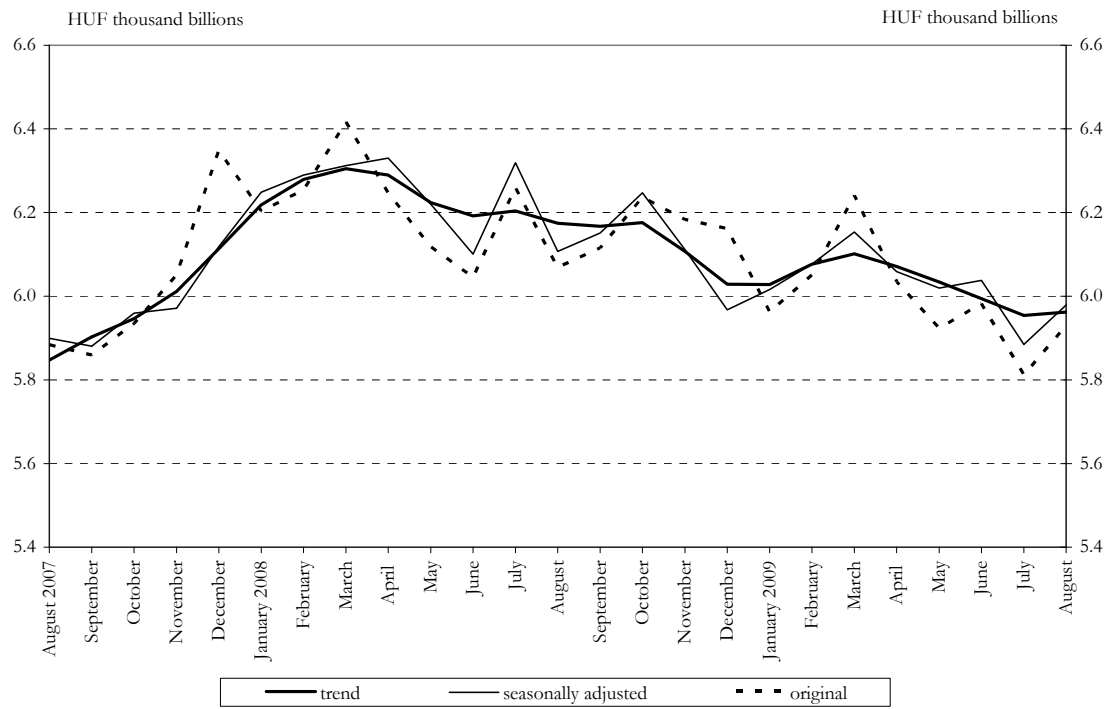


Chart 16 Real growth of the monetary aggregates<sup>5</sup>

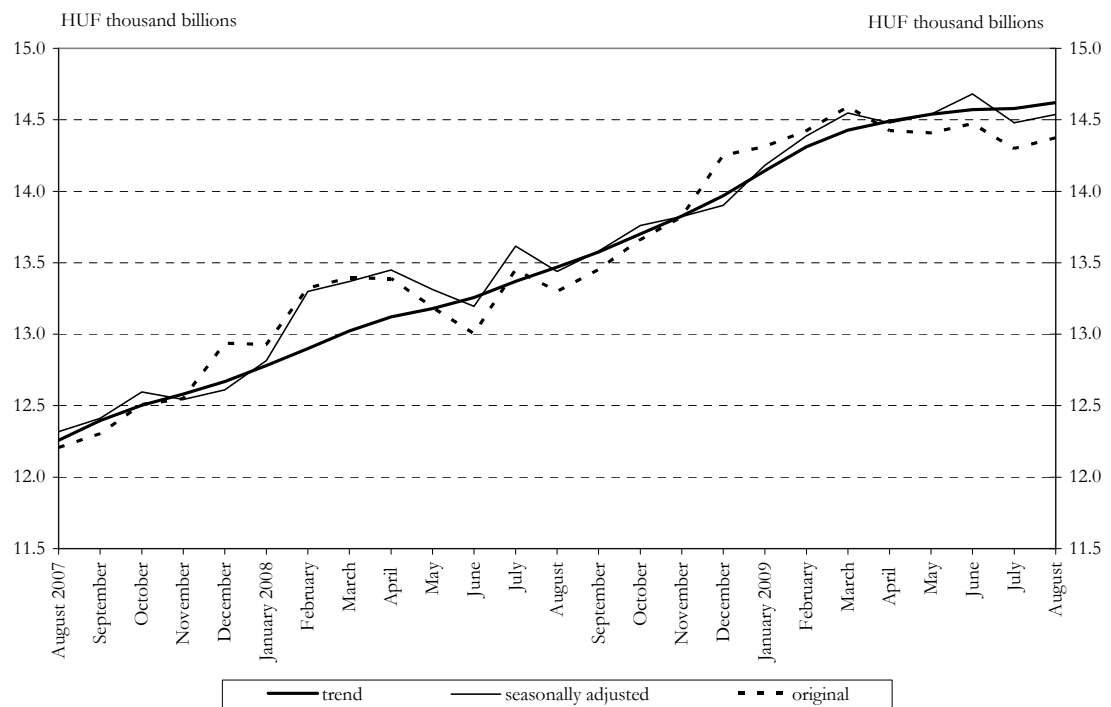




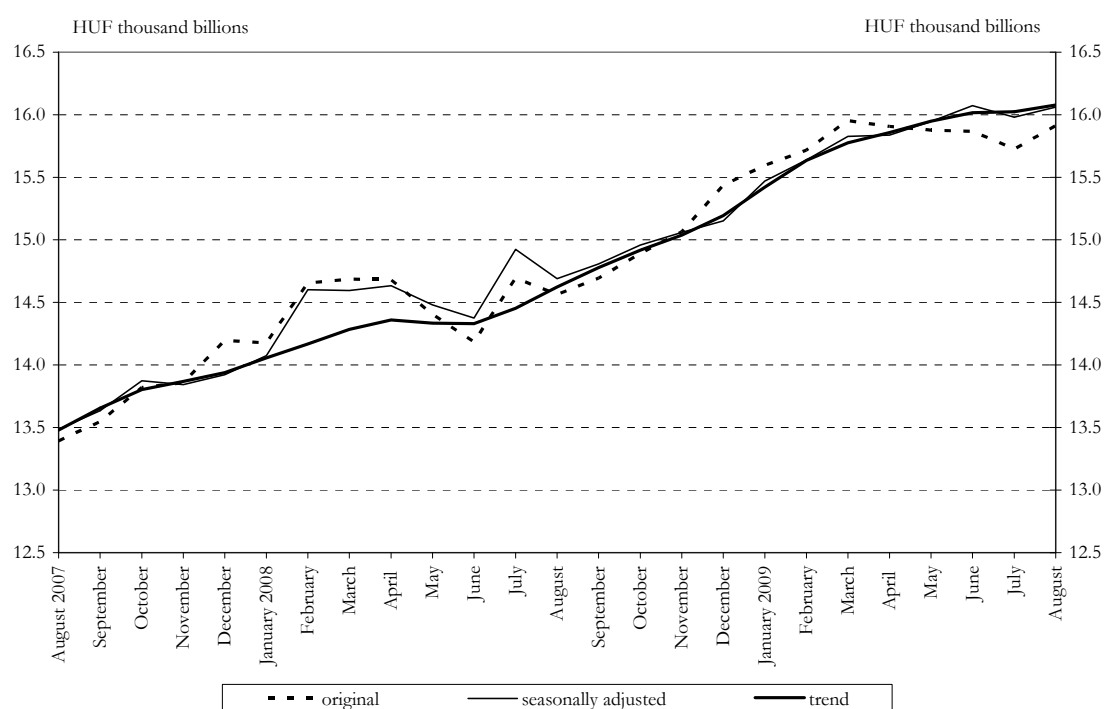
**Chart 17 Seasonally adjusted M1**



**Chart 18 Seasonally adjusted M2**



**Chart 19 Seasonally adjusted M3**



**Chart 20 Total foreign exposure of credit institutions**

